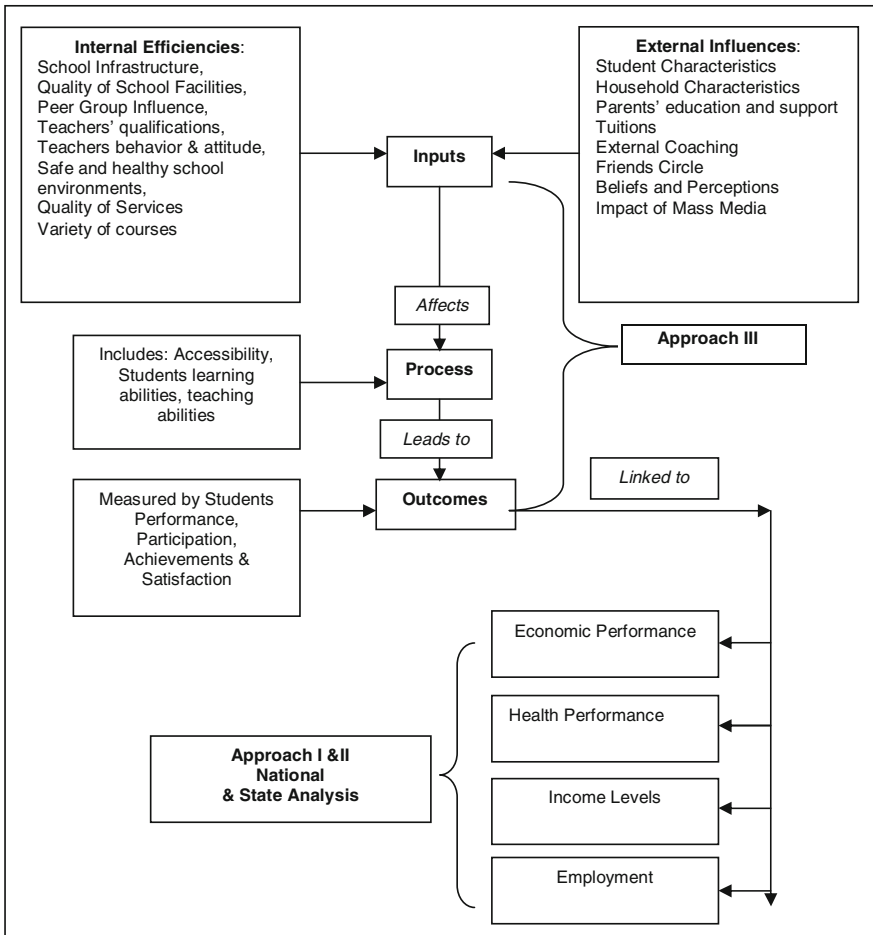
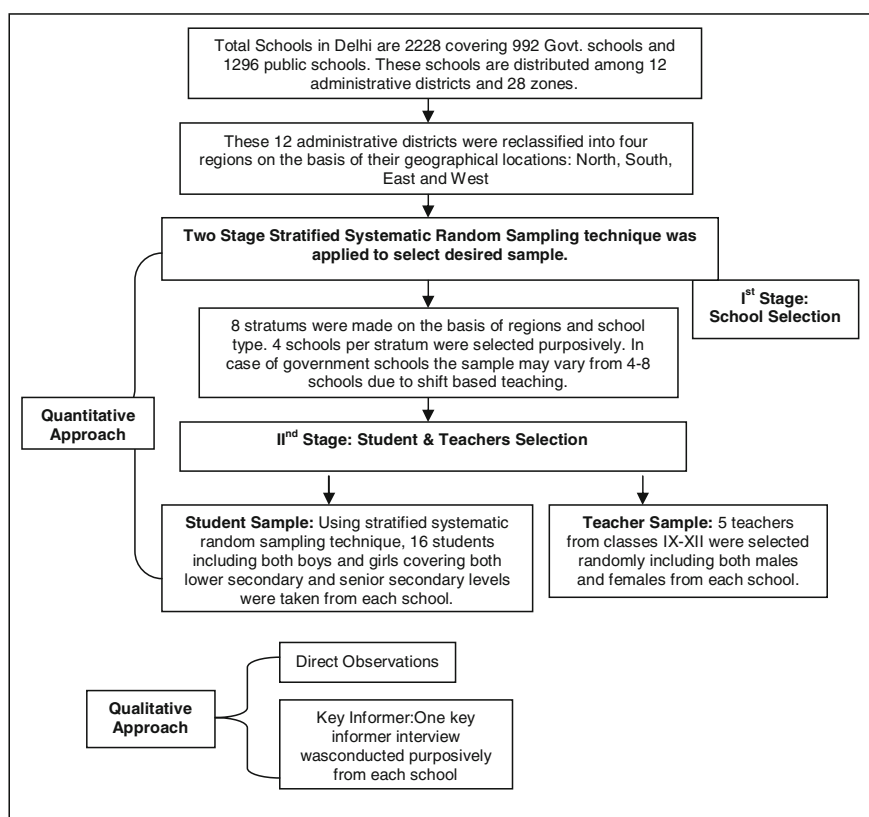


# Appendix

**Box A.1** Conceptual Framework of Study



### Box A.2 Sampling Design



### Box A.3 List of Indicators for Various Dimensional Indexes for Macro Model: State-level

S. No.	Index type	List of variables
1	Elementary education index (EEI)	<ul style="list-style-type: none"> <li>Public expenditure on elementary education as % of GSDP</li> <li>Elementary schools/1000 population</li> <li>Pupil teacher ratio in elementary schools</li> <li>Elementary GER</li> <li>Girls per 100 boys</li> </ul>
2	Secondary education index (SEI)	<ul style="list-style-type: none"> <li>Public expenditure on secondary education as % of GSDP</li> <li>Secondary schools/1000 population</li> <li>Pupil teacher ratio in secondary schools</li> <li>Secondary GER</li> <li>Girls per 100 boys</li> </ul>

(continued)

(continued)

S. No.	Index type	List of variables
3	Economic index (ECI)	<ul style="list-style-type: none"> <li>• Per capita NSDP at FC constant prices (2011–12)</li> <li>• Public debt as % of GSDP</li> <li>• Real GR of states as % of GSDP</li> <li>• FDI proposals approved (in million Rs)</li> </ul>
4	Social index (SCI)	<ul style="list-style-type: none"> <li>• Urban population %</li> <li>• Mean age at effective marriage (females)</li> <li>• Poverty %</li> <li>• Literacy rate %</li> <li>• HIV prevalence rate adult</li> <li>• Employment in organized sector</li> </ul>
5	Demographic index (DMI)	<ul style="list-style-type: none"> <li>• Sex ratio (females per 100 males)</li> <li>• Life expectancy at birth</li> <li>• Exponential GR of population</li> </ul>
6	Demographic health index (DMHI)	<ul style="list-style-type: none"> <li>• Crude birth rates</li> <li>• Crude death rates</li> <li>• Infant mortality rates</li> <li>• Maternal mortality rates</li> <li>• Total fertility rates</li> </ul>
7	Health index (HLI)	<ul style="list-style-type: none"> <li>• Full Immunization of children (%)</li> <li>• Contraceptive use by any methods (%)</li> <li>• Percent of institutionalized deliveries</li> <li>• Percent of women with any ANC</li> <li>• Average population served per Govt. hospital</li> </ul>