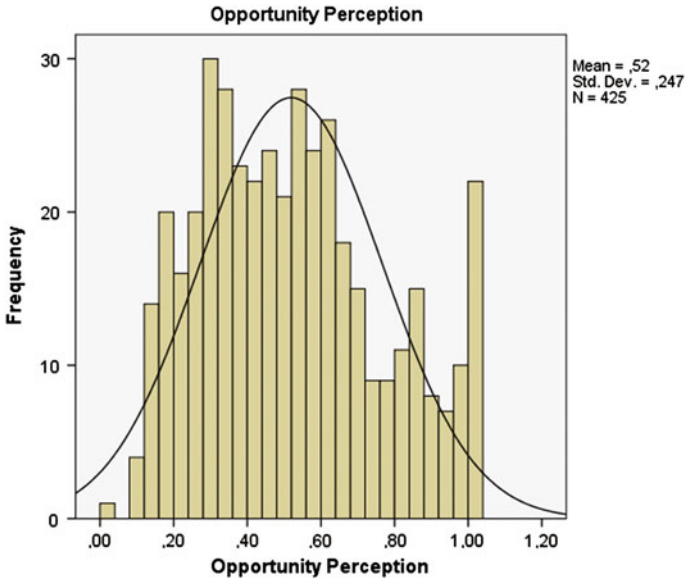
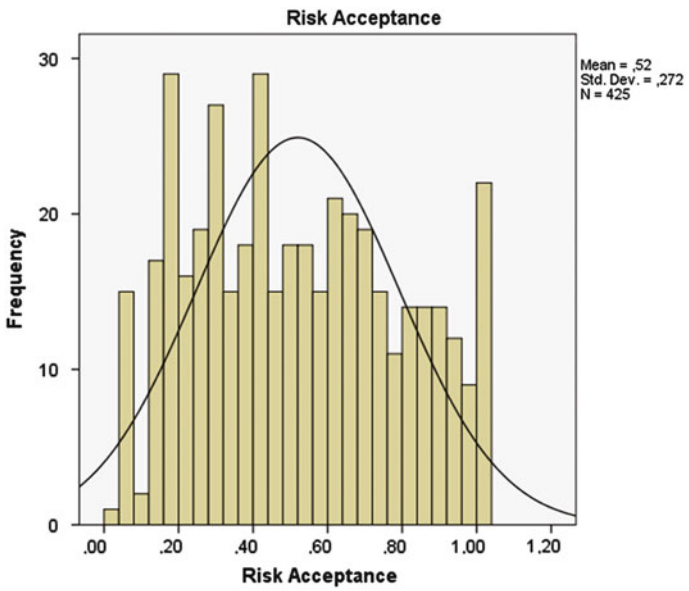
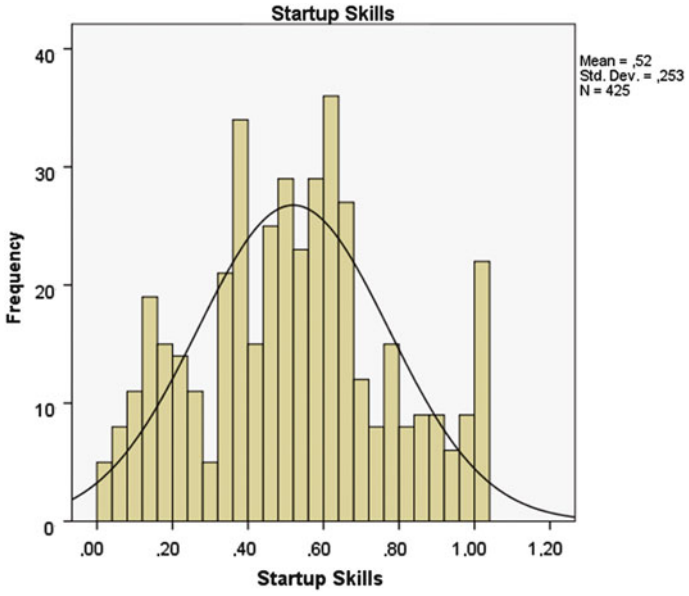
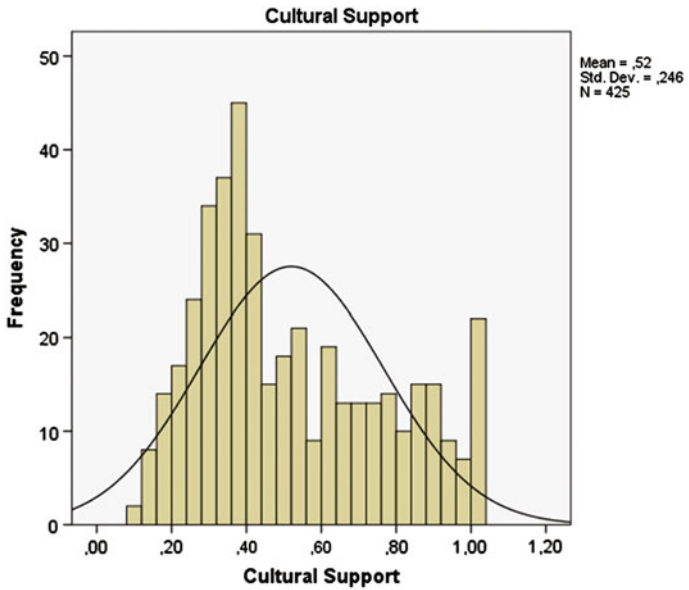
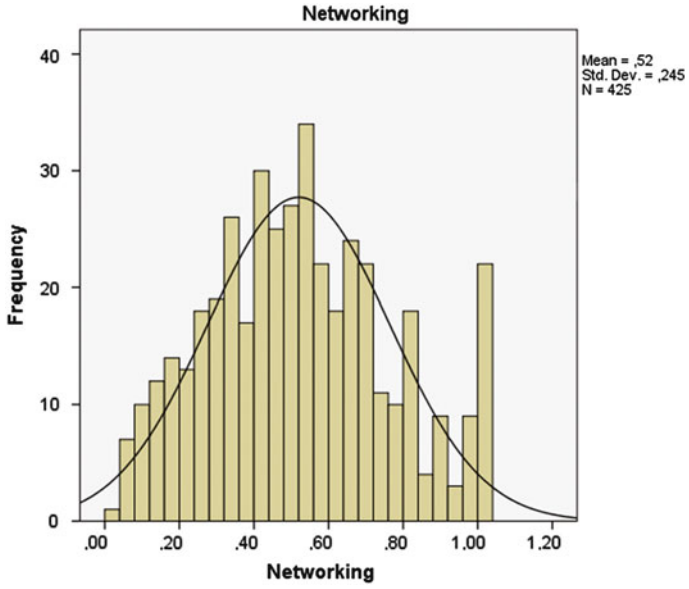


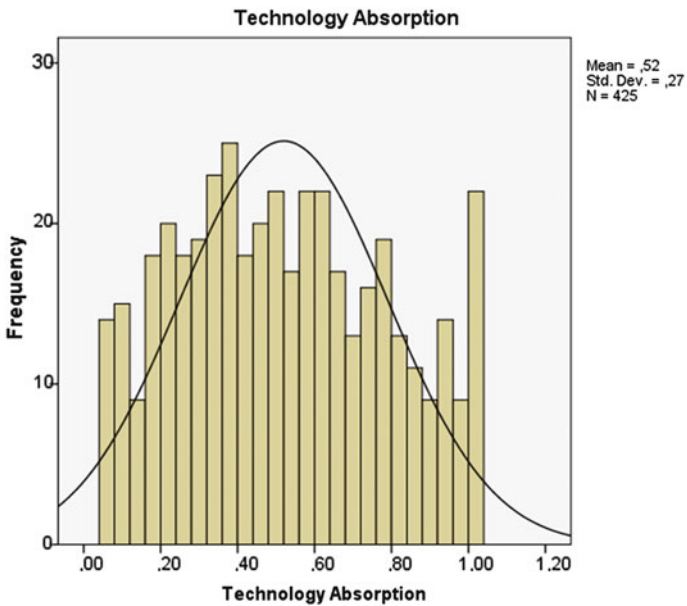
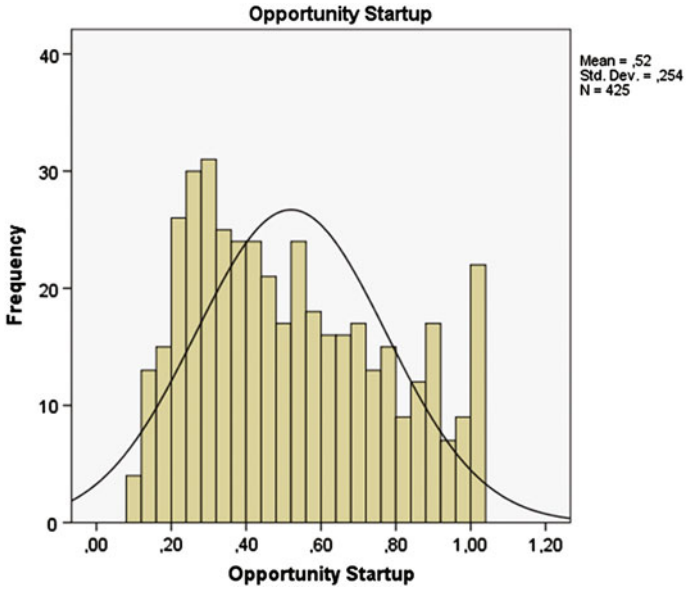
Appendix A

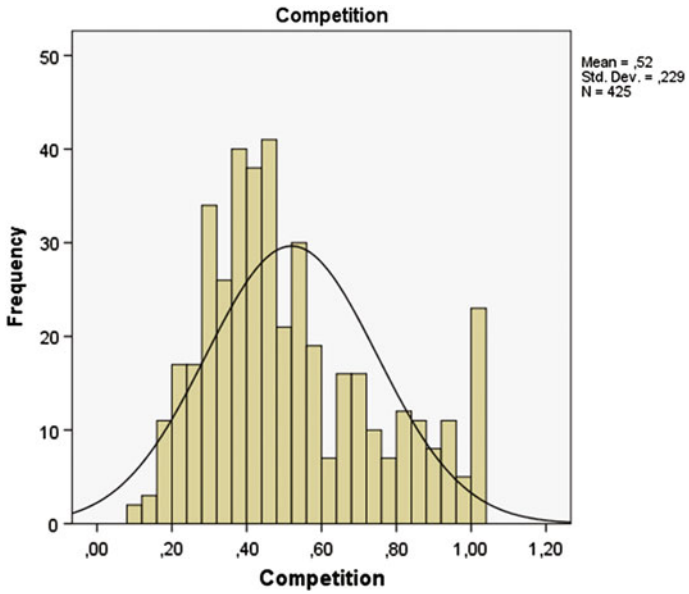
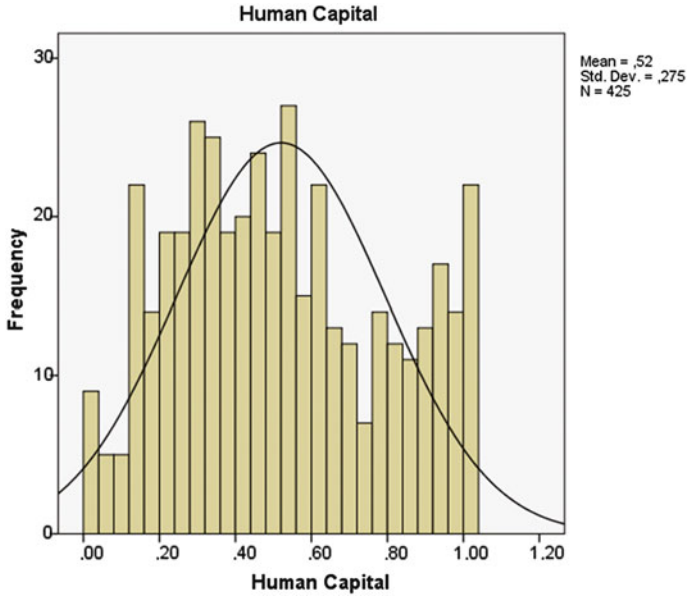
Pillar Distributions

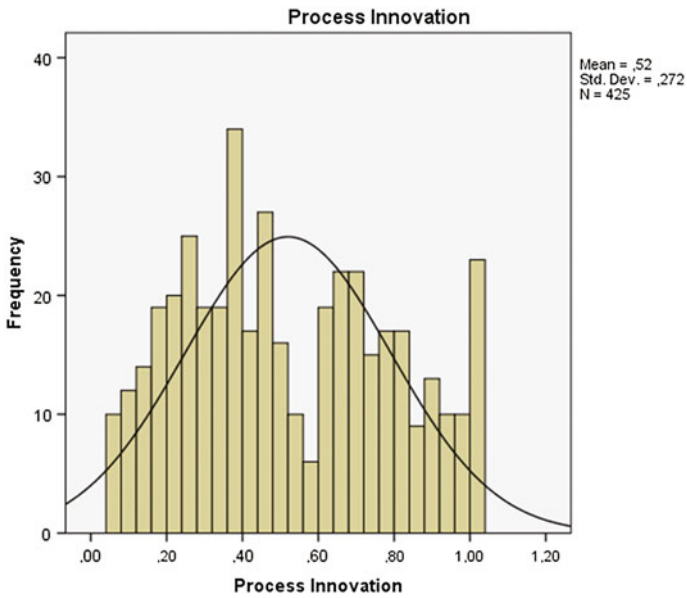
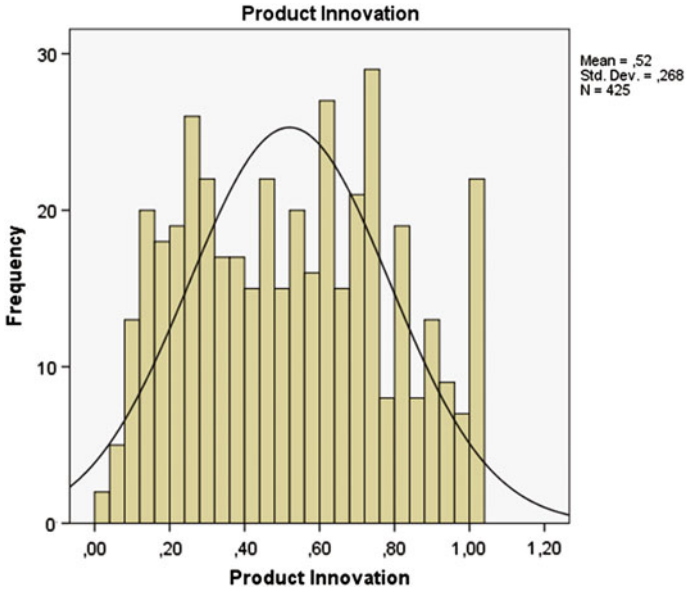


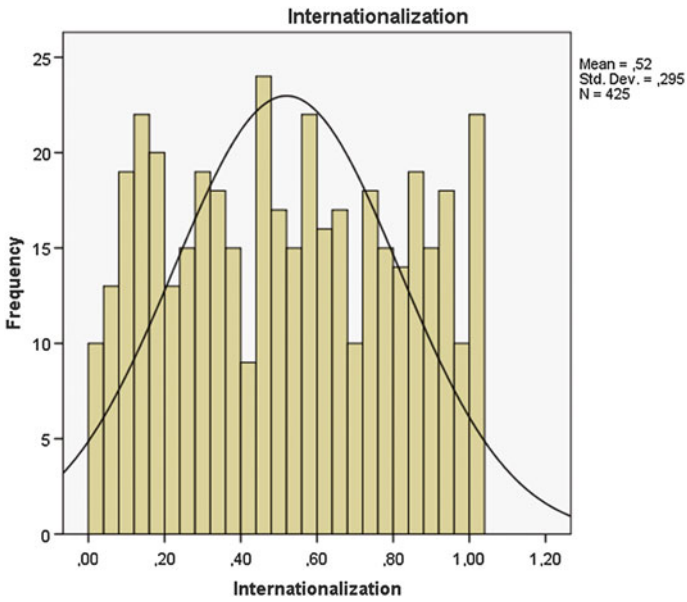
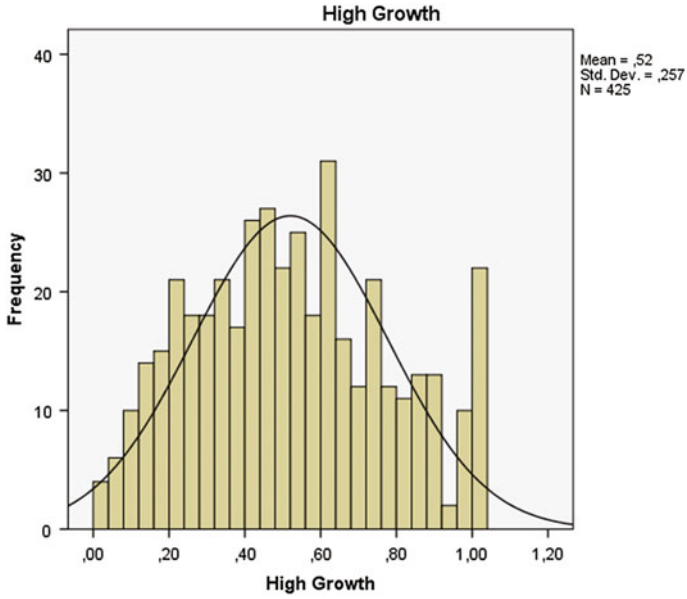


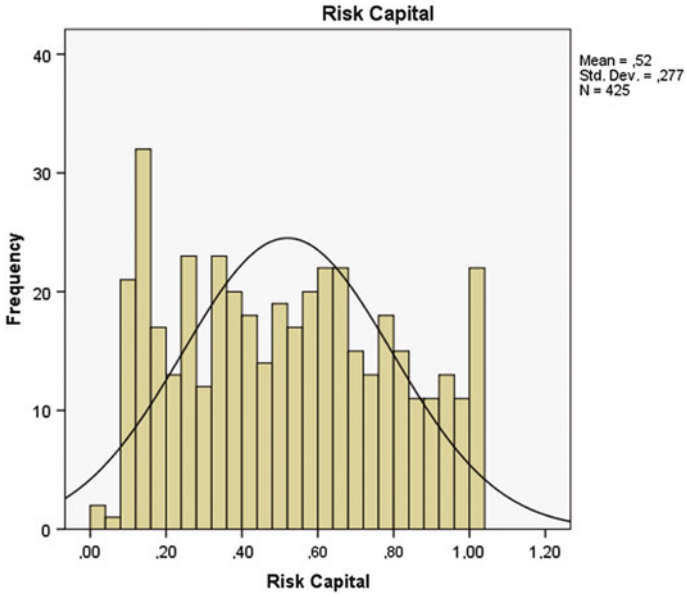












Appendix B

The Global Entrepreneurship Sub-index Rank of Countries in Alphabetical Order, 2015

Countries	GEDI	GEDI rank	ATT	ATT rank	ABT	ABT rank	ASP	ASP rank
Albania	30.6	76	28.8	90	36.2	66	26.8	94
Algeria	30.2	79	35.8	69	28.8	94	26.1	97
Angola	22.7	111	21.4	99	18.8	126	27.8	89
Argentina	37.2	56	47.3	39	34.1	78	30.4	73
Australia	77.6	3	77.9	3	81.3	5	73.5	5
Austria	64.9	18	65.6	11	66.5	16	62.6	20
Bahrain	45.1	43	47.5	38	51.0	33	36.8	56
Bangladesh	14.4	130	14.5	108	21.2	121	7.6	130
Barbados	37.1	59	48.9	34	37.9	58	24.4	104
Belgium	65.5	16	57.5	18	66.1	17	72.8	6
Benin	25.6	102	13.1	112	34.9	74	28.8	84
Bolivia	28.0	92	36.6	65	25.8	108	21.5	114
Bosnia	28.9	83	29.8	85	26.5	106	30.4	74
Botswana	33.0	66	37.0	64	32.8	83	29.3	81
Brazil	25.8	100	41.3	49	25.6	109	10.6	129
Brunei Darussalam	36.9	60	39.6	58	40.8	51	30.4	75
Bulgaria	42.7	44	50.1	31	41.2	50	36.8	55
Burkina Faso	22.1	114	9.9	120	30.5	90	25.9	98
Burundi	18.4	124	4.1	130	30.4	92	20.6	116
Cambodia	26.3	98	9.5	123	37.8	59	31.6	64
Cameroon	22.0	115	15.2	107	26.8	104	24.1	106
Canada	81.5	2	79.2	2	85.7	1	79.6	2
Chad	16.6	126	5.0	129	23.1	116	21.6	112
Chile	63.2	19	74.7	6	50.4	34	64.5	15
China	36.4	61	35.7	70	27.6	100	45.8	44
Colombia	47.9	36	47.1	40	46.4	39	50.4	37
Costa Rica	37.7	55	49.4	32	35.3	72	28.3	86

(continued)

Countries	GEDI	GEDI rank	ATT	ATT rank	ABT	ABT rank	ASP	ASP rank
Côte d'Ivoire	24.1	107	11.0	118	34.4	76	26.9	93
Croatia	40.6	51	35.5	71	36.1	68	50.1	38
Cyprus	42.5	46	31.0	84	45.5	40	50.9	36
Czech Republic	48.9	35	40.7	54	42.4	46	63.5	19
Denmark	71.4	6	59.4	16	83.4	3	71.6	8
Dominican Republic	30.6	77	40.3	56	26.6	105	24.9	101
Ecuador	28.2	90	37.4	63	27.0	103	20.1	117
Egypt	28.1	91	34.4	75	19.4	124	30.5	72
El Salvador	29.6	81	29.8	86	30.5	91	28.6	85
Estonia	60.2	21	57.2	19	61.8	19	61.7	22
Ethiopia	17.2	124	13.7	110	22.4	118	15.6	123
Finland	65.7	14	75.8	5	59.3	20	62.0	21
France	67.3	12	62.0	13	70.3	12	69.7	12
Gabon	27.7	93	18.9	101	33.3	82	30.9	66
The Gambia	25.6	101	9.2	124	38.0	57	29.6	79
Germany	67.4	11	59.9	15	72.0	10	70.3	11
Ghana	24.8	105	34.9	72	22.3	119	17.2	120
Greece	42.0	47	35.8	68	48.9	36	41.4	49
Guatemala	20.3	122	23.9	97	21.1	123	16.0	122
Guyana	16.2	127	18.8	102	16.2	128	13.5	124
Honduras	29.8	80	13.5	111	44.9	42	30.9	67
Hong Kong	45.9	40	41.2	51	37.5	60	59.1	27
Hungary	42.7	45	41.1	53	42.3	47	44.7	45
Iceland	70.4	7	71.5	8	69.9	13	69.7	13
India	25.3	104	25.5	95	26.0	107	24.4	103
Indonesia	21.0	120	29.2	88	22.1	120	11.9	127
Iran	27.7	94	32.1	79	27.3	102	23.6	108
Ireland	65.3	17	57.9	17	71.5	11	66.5	14
Israel	59.9	22	54.7	22	53.2	31	71.7	7
Italy	41.3	49	34.5	74	40.0	53	49.5	40
Jamaica	27.2	97	36.2	66	28.5	95	16.9	121
Japan	49.5	33	31.4	82	55.8	27	61.5	24
Jordan	33.3	65	41.7	48	23.8	115	34.3	62
Kazakhstan	28.4	88	33.4	77	32.7	84	19.2	119
Kenya	28.5	86	14.3	109	36.2	67	35.0	60
Korea	54.1	28	48.0	37	52.9	32	61.4	25
Kuwait	47.7	37	41.1	52	55.5	28	46.5	43
Lao PDR	31.1	72	12.6	114	44.5	43	36.2	57

(continued)

Countries	GEDI	GEDI rank	ATT	ATT rank	ABT	ABT rank	ASP	ASP rank
Latvia	54.5	27	48.6	35	56.2	25	58.6	28
Lebanon	40.7	50	50.8	29	35.6	70	35.8	58
Liberia	25.5	103	10.5	119	35.6	71	30.3	76
Libya	31.0	73	27.1	92	36.8	63	29.0	83
Lithuania	54.6	26	49.3	33	58.1	22	56.5	32
Luxembourg	57.2	23	45.1	43	64.9	18	61.6	23
Macedonia	37.1	58	36.1	67	35.1	73	40.0	50
Madagascar	22.0	116	7.1	128	34.7	75	24.1	105
Malawi	15.6	128	11.0	117	14.3	129	21.6	111
Malaysia	40.0	53	42.5	46	44.5	44	33.0	63
Mali	22.5	113	7.7	127	32.6	85	27.2	91
Mauritania	21.1	119	8.1	126	27.4	101	27.9	88
Mexico	30.7	75	40.6	55	27.6	98	23.7	107
Moldova	37.2	57	27.5	91	45.3	41	38.9	52
Montenegro	39.1	54	42.1	47	31.9	87	43.3	46
Morocco	29.4	82	39.2	60	21.1	122	28.1	87
Mozambique	24.3	106	9.8	122	34.1	79	29.2	82
Myanmar	23.1	109	11.2	116	27.6	99	30.6	70
Namibia	31.9	69	29.3	87	28.2	96	38.1	53
Netherlands	66.5	13	71.0	9	68.1	14	60.3	26
Nicaragua	28.4	87	12.7	113	42.7	45	29.9	77
Nigeria	28.9	84	32.0	80	28.0	97	26.6	95
Norway	65.6	15	72.8	7	75.4	6	48.8	41
Oman	47.3	39	45.9	41	53.4	30	42.6	47
Pakistan	20.1	123	15.5	106	19.5	124	25.2	99
Panama	32.2	67	41.2	50	35.9	69	19.4	118
Paraguay	36.0	62	26.1	93	47.3	38	34.5	61
Peru	30.9	74	42.7	45	24.8	114	25.1	100
Philippines	27.7	95	34.5	73	25.0	111	23.5	109
Poland	47.4	38	51.0	28	33.8	81	57.4	30
Portugal	50.8	30	45.7	42	49.3	35	57.4	29
Puerto Rico	48.9	34	50.1	30	56.7	24	39.9	51
Qatar	56.2	24	52.8	23	59.0	21	56.7	31
Romania	45.3	42	38.9	61	40.8	52	56.1	33
Russia	31.7	70	31.6	81	37.3	61	26.2	96
Rwanda	26.2	99	12.3	115	39.3	55	27.0	92
Saudi Arabia	49.6	31	56.9	20	42.0	48	49.9	39
Senegal	27.3	96	17.3	105	34.2	77	30.5	71
Serbia	30.6	78	39.6	57	22.6	117	29.5	80
Sierra Leone	21.6	117	8.3	124	31.7	88	24.8	102

(continued)

Countries	GEDI	GEDI rank	ATT	ATT rank	ABT	ABT rank	ASP	ASP rank
Singapore	68.1	10	52.1	25	73.5	8	78.8	4
Slovakia	45.4	41	44.2	44	37.3	62	54.7	35
Slovenia	53.1	29	48.6	36	56.0	26	54.8	34
South Africa	40.0	52	33.4	76	38.5	56	48.1	42
Spain	49.6	32	52.6	24	53.8	29	42.3	48
Sri Lanka	31.1	71	18.7	103	39.6	54	35.0	59
Suriname	20.7	121	25.0	96	24.9	112	12.1	126
Swaziland	21.4	118	17.4	104	25.3	110	21.6	113
Sweden	71.8	5	77.1	4	74.7	7	63.5	18
Switzerland	68.6	9	62.8	12	72.0	9	71.1	10
Taiwan	69.1	8	60.8	14	67.5	15	79.0	3
Tanzania	23.6	108	9.8	121	31.1	89	29.8	78
Thailand	32.1	68	32.1	78	36.4	65	27.7	90
Trinidad and Tobago	28.4	89	31.2	83	32.5	86	21.5	115
Tunisia	35.5	63	39.2	59	36.5	64	30.7	68
Turkey	54.6	25	51.7	27	48.5	37	63.7	17
Uganda	15.1	129	20.8	100	12.1	130	12.3	124
Ukraine	33.6	64	28.9	89	33.9	80	38.1	54
United Arab Emirates	61.6	20	55.8	21	57.6	23	71.4	9
United Kingdom	72.7	4	70.9	10	82.8	4	64.3	16
United States	85.0	1	83.4	1	84.7	2	86.8	1
Uruguay	41.4	48	51.7	26	41.9	49	30.7	69
Venezuela	22.6	112	38.5	62	17.7	127	11.4	128
Vietnam	28.8	85	25.8	94	29.2	93	31.5	65
Zambia	23.0	110	22.0	98	24.9	113	22.2	110

Appendix C

Entrepreneurial Attitudes Sub-index and Pillar Values of Countries in Alphabetical Order, 2015

Countries	ATT	Opportunity perception	Start-up skills	Risk acceptance	Networking	Cultural support
Albania	28.8	0.26	0.52	0.13	0.43	0.21
Algeria	35.8	0.72	0.35	0.29	0.24	0.39
Angola	21.4	0.58	0.09	0.06	0.33	0.18
Argentina	47.3	0.90	1.00	0.17	0.53	0.30
Australia	77.9	0.92	0.94	0.82	0.67	0.80
Austria	65.6	0.65	0.78	0.75	0.85	0.64
Bahrain	47.5	0.64	0.46	0.43	1.00	0.41
Bangladesh	14.5	0.37	0.05	0.03	0.07	0.29
Barbados	48.9	0.17	1.00	0.54	0.65	0.85
Belgium	57.5	0.63	0.52	0.66	0.46	0.64
Benin	13.1	0.19	0.11	0.12	0.04	0.21
Bolivia	36.6	0.50	0.62	0.17	0.48	0.27
Bosnia	29.8	0.15	0.39	0.14	0.57	0.45
Botswana	37.0	0.52	0.09	0.72	0.15	0.80
Brazil	41.3	1.00	0.38	0.38	0.49	0.52
Brunei Darussalam	39.6	0.24	0.24	0.67	0.69	0.50
Bulgaria	50.1	0.56	0.75	0.42	0.51	0.42
Burkina Faso	9.9	0.12	0.03	0.13	0.04	0.18
Burundi	4.1	0.04	0.02	0.05	0.02	0.08
Cambodia	9.5	0.12	0.15	0.05	0.05	0.10
Cameroon	15.2	0.29	0.12	0.14	0.07	0.16
Canada	79.2	1.00	0.66	0.87	0.67	0.86
Chad	5.0	0.09	0.02	0.05	0.03	0.07
Chile	74.7	1.00	0.95	0.79	0.71	0.77
China	35.7	0.52	0.17	0.27	0.59	0.39
Colombia	47.1	1.00	0.55	0.42	0.36	0.40
Costa Rica	49.4	0.45	0.64	0.52	0.53	0.56

(continued)

Countries	ATT	Opportunity perception	Start-up skills	Risk acceptance	Networking	Cultural support
Côte d'Ivoire	11.0	0.24	0.07	0.13	0.03	0.12
Croatia	35.5	0.17	0.58	0.44	0.42	0.32
Cyprus	31.0	0.21	0.41	0.48	0.39	0.16
Czech Republic	40.7	0.34	0.57	0.64	0.49	0.20
Denmark	59.4	0.70	0.52	0.78	0.84	0.37
Dominican Republic	40.3	0.56	0.56	0.29	0.64	0.34
Ecuador	37.4	0.67	0.62	0.27	0.35	0.35
Egypt	34.4	0.51	0.35	0.28	0.38	0.36
El Salvador	29.8	0.40	0.29	0.25	0.29	0.36
Estonia	57.2	0.40	0.65	0.57	0.80	0.57
Ethiopia	13.7	0.20	0.10	0.06	0.03	0.37
Finland	75.8	0.73	0.71	0.81	1.00	0.96
France	62.0	0.66	0.41	0.70	0.76	0.74
Gabon	18.9	0.41	0.08	0.15	0.10	0.27
The Gambia	9.2	0.12	0.03	0.05	0.15	0.12
Germany	59.9	0.65	0.44	0.66	0.57	0.77
Ghana	34.9	0.61	0.20	0.36	0.28	0.60
Greece	35.8	0.17	0.99	0.19	0.41	0.33
Guatemala	23.9	0.45	0.24	0.17	0.19	0.28
Guyana	18.8	0.14	0.14	0.06	0.52	0.18
Honduras	13.5	0.22	0.11	0.13	0.17	0.07
Hong Kong	41.2	0.30	0.22	0.81	0.57	0.55
Hungary	41.1	0.20	0.49	0.55	0.55	0.44
Iceland	71.5	0.44	0.89	0.91	1.00	0.67
India	25.5	0.38	0.26	0.28	0.14	0.30
Indonesia	29.2	0.56	0.35	0.24	0.29	0.30
Iran	32.1	0.59	0.67	0.15	0.30	0.20
Ireland	57.9	0.30	0.71	0.75	0.74	0.72
Israel	54.7	0.65	0.43	0.55	0.70	0.63
Italy	34.5	0.33	0.39	0.42	0.30	0.40
Jamaica	36.2	0.33	0.43	0.29	0.59	0.42
Japan	31.4	0.20	0.12	0.68	0.34	0.43
Jordan	41.7	0.51	0.48	0.38	0.48	0.54
Kazakhstan	33.4	0.51	0.34	0.19	0.63	0.30
Kenya	14.3	0.14	0.03	0.13	0.36	0.12
Korea	48.0	0.27	0.60	0.62	0.68	0.48
Kuwait	41.1	0.68	0.19	0.40	0.78	0.30
Lao PDR	12.6	0.17	0.16	0.05	0.11	0.15

(continued)

Countries	ATT	Opportunity perception	Start-up skills	Risk acceptance	Networking	Cultural support
Latvia	48.6	0.31	0.67	0.51	0.64	0.42
Lebanon	50.8	0.69	0.79	0.34	0.76	0.29
Liberia	10.5	0.10	0.17	0.05	0.05	0.18
Libya	27.1	0.59	0.79	0.06	0.11	0.13
Lithuania	49.3	0.30	0.62	0.55	0.65	0.49
Luxembourg	45.1	0.46	0.15	0.52	0.90	0.68
Macedonia	36.1	0.25	0.45	0.23	0.56	0.41
Madagascar	7.1	0.14	0.03	0.05	0.03	0.12
Malawi	11.0	0.14	0.01	0.09	0.10	0.26
Malaysia	42.5	0.57	0.21	0.56	0.82	0.28
Mali	7.7	0.14	0.06	0.05	0.03	0.12
Mauritania	8.1	0.13	0.04	0.05	0.06	0.13
Mexico	40.6	0.92	0.34	0.44	0.52	0.23
Moldova	27.5	0.22	0.37	0.14	0.40	0.33
Montenegro	42.1	0.21	0.88	0.14	0.93	0.46
Morocco	39.2	0.53	0.24	0.51	0.71	0.43
Mozambique	9.8	0.14	0.04	0.13	0.06	0.13
Myanmar	11.2	0.27	0.14	0.05	0.01	0.14
Namibia	29.3	0.32	0.13	0.43	0.23	0.49
Netherlands	71.0	0.60	0.71	0.81	0.88	1.00
Nicaragua	12.7	0.22	0.10	0.13	0.12	0.07
Nigeria	32.0	0.81	0.17	0.08	0.70	0.22
Norway	72.8	0.91	0.53	0.92	0.87	0.90
Oman	45.9	0.68	0.20	0.43	0.94	0.40
Pakistan	15.5	0.35	0.08	0.07	0.10	0.23
Panama	41.2	0.53	0.48	0.56	0.55	0.29
Paraguay	26.1	0.43	0.40	0.15	0.25	0.17
Peru	42.7	0.86	0.59	0.32	0.49	0.37
Philippines	34.5	0.48	0.40	0.25	0.41	0.40
Poland	51.0	0.33	0.87	0.41	0.70	0.55
Portugal	45.7	0.22	0.69	0.50	0.45	0.65
Puerto Rico	50.1	0.41	1.00	1.00	0.33	0.26
Qatar	52.8	1.00	0.15	0.58	1.00	0.66
Romania	38.9	0.34	0.46	0.33	0.41	0.43
Russia	31.6	0.38	0.41	0.24	0.54	0.21
Rwanda	12.3	0.08	0.05	0.13	0.09	0.28
Saudi Arabia	56.9	1.00	0.78	0.26	0.69	0.62
Senegal	17.3	0.19	0.06	0.24	0.22	0.20
Serbia	39.6	0.28	0.84	0.18	0.66	0.34
Sierra Leone	8.3	0.14	0.01	0.13	0.02	0.13

(continued)

Countries	ATT	Opportunity perception	Start-up skills	Risk acceptance	Networking	Cultural support
Singapore	52.1	0.43	0.38	0.79	0.38	0.76
Slovakia	44.2	0.17	0.60	0.56	0.88	0.36
Slovenia	48.6	0.14	0.99	0.63	0.76	0.51
South Africa	33.4	0.50	0.12	0.46	0.35	0.43
Spain	52.6	0.29	0.92	0.64	0.61	0.49
Sri Lanka	18.7	0.11	0.14	0.24	0.21	0.26
Suriname	25.0	0.28	0.12	0.21	0.45	0.37
Swaziland	17.4	0.11	0.07	0.06	0.29	0.44
Sweden	77.1	1.00	0.61	0.83	1.00	0.90
Switzerland	62.8	0.55	0.47	0.94	0.73	0.70
Taiwan	60.8	0.70	0.48	0.64	0.69	0.62
Tanzania	9.8	0.15	0.03	0.13	0.05	0.15
Thailand	32.1	0.35	0.49	0.34	0.26	0.35
Trinidad and Tobago	31.2	0.10	0.17	0.55	0.63	0.39
Tunisia	39.2	0.36	0.46	0.38	0.40	0.54
Turkey	51.7	0.66	0.67	0.43	0.41	0.50
Uganda	20.8	0.20	0.15	0.22	0.28	0.28
Ukraine	28.9	0.46	0.79	0.05	0.38	0.10
United Arab Emirates	55.8	0.67	0.36	0.43	0.73	0.79
United Kingdom	70.9	0.69	0.60	0.81	0.71	0.79
United States	83.4	1.00	1.00	0.88	0.63	0.83
Uruguay	51.7	0.63	0.84	0.46	0.52	0.65
Venezuela	38.5	0.87	1.00	0.08	0.51	0.18
Vietnam	25.8	0.24	0.24	0.08	0.62	0.28
Zambia	22.0	0.36	0.03	0.21	0.28	0.35

Appendix D

Entrepreneurial Abilities Sub-index and Pillar Values of Countries in Alphabetical Order, 2015

Countries	ABT	Opportunity startup	Technology absorption	Human capital	Competition
Albania	36.2	0.39	0.30	0.51	0.39
Algeria	28.8	0.36	0.29	0.35	0.21
Angola	18.8	0.23	0.21	0.24	0.12
Argentina	34.1	0.25	0.48	0.29	0.42
Australia	81.3	0.93	1.00	0.89	0.69
Austria	66.5	0.65	0.98	0.54	0.87
Bahrain	51.0	0.57	0.77	0.61	0.55
Bangladesh	21.2	0.47	0.17	0.09	0.23
Barbados	37.9	0.63	0.09	0.71	0.42
Belgium	66.1	0.64	0.46	0.87	0.82
Benin	34.9	0.19	1.00	0.28	0.34
Bolivia	25.8	0.35	0.14	0.21	0.38
Bosnia	26.5	0.11	0.38	0.25	0.43
Botswana	32.8	0.39	0.28	0.34	0.45
Brazil	25.6	0.27	0.34	0.15	0.45
Brunei Darussalam	40.8	0.39	0.53	0.57	0.39
Bulgaria	41.2	0.52	0.29	0.49	0.39
Burkina Faso	30.5	0.38	0.51	0.30	0.23
Burundi	30.4	0.37	0.49	0.27	0.31
Cambodia	37.8	0.17	0.64	0.57	0.48
Cameroon	26.8	0.20	0.36	0.22	0.39
Canada	85.7	0.84	0.83	0.95	0.90
Chad	23.1	0.08	0.48	0.29	0.22
Chile	50.4	0.53	0.57	0.51	0.45
China	27.6	0.20	0.23	0.37	0.34
Colombia	46.4	0.83	0.36	0.45	0.46
Costa Rica	35.3	0.46	0.32	0.23	0.46

(continued)

Countries	ABT	Opportunity startup	Technology absorption	Human capital	Competition
Côte d'Ivoire	34.4	0.32	0.60	0.44	0.30
Croatia	36.1	0.28	0.54	0.27	0.47
Cyprus	45.5	0.62	0.75	0.28	0.44
Czech Republic	42.4	0.47	0.65	0.26	0.48
Denmark	83.4	1.00	0.98	1.00	1.00
Dominican Republic	26.6	0.26	0.08	0.50	0.34
Ecuador	27.0	0.22	0.17	0.27	0.57
Egypt	19.4	0.13	0.25	0.18	0.23
El Salvador	30.5	0.27	0.20	0.35	0.50
Estonia	61.8	0.64	0.74	0.55	0.68
Ethiopia	22.4	0.38	0.12	0.19	0.31
Finland	59.3	0.77	0.73	0.51	0.46
France	70.3	0.69	0.94	0.71	0.72
Gabon	33.3	0.22	0.75	0.32	0.27
The Gambia	38.0	0.34	0.62	0.46	0.43
Germany	72.0	0.78	0.76	0.62	0.93
Ghana	22.3	0.34	0.16	0.07	0.42
Greece	48.9	0.53	0.65	0.63	0.43
Guatemala	21.1	0.29	0.08	0.05	0.57
Guyana	16.2	0.21	0.10	0.12	0.24
Honduras	44.9	0.33	0.81	0.80	0.36
Hong Kong	37.5	0.77	0.27	0.66	0.11
Hungary	42.3	0.51	0.54	0.47	0.31
Iceland	69.9	1.00	1.00	0.53	0.53
India	26.0	0.11	0.11	0.29	0.69
Indonesia	22.1	0.31	0.22	0.14	0.33
Iran	27.3	0.26	0.37	0.38	0.19
Ireland	71.5	0.66	0.89	0.97	0.87
Israel	53.2	0.50	0.78	0.77	0.30
Italy	40.0	0.53	0.70	0.15	0.45
Jamaica	28.5	0.43	0.09	0.33	0.42
Japan	55.8	0.57	1.00	0.88	0.43
Jordan	23.8	0.26	0.11	0.26	0.37
Kazakhstan	32.7	0.45	0.22	0.69	0.20
Kenya	36.2	0.33	0.61	0.43	0.39
Korea	52.9	0.58	0.87	0.82	0.22
Kuwait	55.5	0.36	1.00	0.68	0.65
Lao PDR	44.5	0.40	0.63	0.60	0.59

(continued)

Countries	ABT	Opportunity startup	Technology absorption	Human capital	Competition
Latvia	56.2	0.64	0.63	0.60	0.53
Lebanon	35.6	0.34	0.26	0.46	0.40
Liberia	35.6	0.40	0.52	0.38	0.37
Libya	36.8	0.38	0.39	0.68	0.30
Lithuania	58.1	0.67	0.69	0.84	0.38
Luxembourg	64.9	0.54	1.00	0.98	0.92
Macedonia	35.1	0.22	0.40	0.42	0.42
Madagascar	34.7	0.40	0.57	0.38	0.32
Malawi	14.3	0.11	0.08	0.03	0.44
Malaysia	44.5	0.84	0.16	0.46	0.64
Mali	32.6	0.25	0.58	0.32	0.40
Mauritania	27.4	0.17	0.56	0.26	0.28
Mexico	27.6	0.48	0.36	0.14	0.23
Moldova	45.3	0.58	0.51	0.72	0.30
Montenegro	31.9	0.42	0.27	0.33	0.35
Morocco	21.1	0.55	0.05	0.06	0.33
Mozambique	34.1	0.43	0.57	0.34	0.28
Myanmar	27.6	0.11	0.53	0.39	0.29
Namibia	28.2	0.31	0.23	0.15	0.52
Netherlands	68.1	0.94	0.69	0.60	0.79
Nicaragua	42.7	0.30	0.71	0.78	0.36
Nigeria	28.0	0.22	0.20	0.40	0.42
Norway	75.4	1.00	0.93	0.79	0.73
Oman	53.4	0.47	0.72	0.64	0.61
Pakistan	19.5	0.20	0.20	0.10	0.33
Panama	35.9	0.58	0.13	0.50	0.46
Paraguay	47.3	0.39	0.65	0.66	0.55
Peru	24.8	0.49	0.08	0.30	0.22
Philippines	25.0	0.22	0.08	0.37	0.43
Poland	33.8	0.25	0.33	0.34	0.46
Portugal	49.3	0.67	0.45	0.52	0.52
Puerto Rico	56.7	0.77	0.41	0.89	0.57
Qatar	59.0	0.51	0.80	0.75	0.90
Romania	40.8	0.45	0.39	0.39	0.41
Russia	37.3	0.34	0.34	0.91	0.23
Rwanda	39.3	0.48	0.61	0.41	0.39
Saudi Arabia	42.0	0.62	0.26	0.58	0.35
Senegal	34.2	0.25	0.64	0.34	0.37
Serbia	22.6	0.19	0.17	0.26	0.31
Sierra Leone	31.7	0.32	0.52	0.36	0.31

(continued)

Countries	ABT	Opportunity startup	Technology absorption	Human capital	Competition
Singapore	73.5	1.00	0.77	1.00	0.57
Slovakia	37.3	0.31	0.61	0.41	0.29
Slovenia	56.0	0.79	0.82	0.54	0.62
South Africa	38.5	0.45	0.30	0.24	0.82
Spain	53.8	0.51	0.79	0.44	0.65
Sri Lanka	39.6	0.46	0.45	0.40	0.47
Suriname	24.9	0.22	0.05	0.52	0.39
Swaziland	25.3	0.30	0.09	0.42	0.31
Sweden	74.7	0.94	1.00	0.71	0.67
Switzerland	72.0	0.63	0.80	0.78	1.00
Taiwan	67.5	0.84	0.73	0.85	0.45
Tanzania	31.1	0.24	0.53	0.38	0.31
Thailand	36.4	0.56	0.23	0.52	0.38
Trinidad and Tobago	32.5	0.46	0.19	0.44	0.39
Tunisia	36.5	0.42	0.45	0.33	0.37
Turkey	48.5	0.37	0.66	0.56	0.40
Uganda	12.1	0.17	0.06	0.03	0.26
Ukraine	33.9	0.37	0.57	0.38	0.27
United Arab Emirates	57.6	0.64	0.38	1.00	0.50
United Kingdom	82.8	0.87	0.75	0.86	0.97
United States	84.7	0.73	0.86	0.94	1.00
Uruguay	41.9	0.64	0.49	0.31	0.45
Venezuela	17.7	0.19	0.18	0.22	0.17
Vietnam	29.2	0.39	0.15	0.60	0.19
Zambia	24.9	0.39	0.09	0.28	0.38

Appendix E

Entrepreneurial Aspirations Sub-index and Pillar Values of Countries in Alphabetical Order, 2015

Countries	ASP	Product innovation	Process innovation	High growth	International-ization	Risk capital
Albania	26.8	0.27	0.24	0.25	0.39	0.25
Algeria	26.1	0.22	0.14	0.18	0.25	0.62
Angola	27.8	0.31	0.06	0.20	0.38	0.69
Argentina	30.4	0.25	0.40	0.43	0.17	0.35
Australia	73.5	0.50	0.80	0.72	0.90	0.98
Austria	62.6	0.77	0.75	0.31	0.92	0.79
Bahrain	36.8	0.43	0.11	0.35	0.65	0.61
Bangladesh	7.6	0.04	0.07	0.13	0.03	0.13
Barbados	24.4	0.22	0.13	0.30	0.46	0.21
Belgium	72.8	0.73	0.80	0.63	0.96	0.77
Benin	28.8	0.37	0.18	0.63	0.33	0.18
Bolivia	21.5	0.29	0.14	0.25	0.15	0.27
Bosnia	30.4	0.21	0.08	0.51	0.51	0.44
Botswana	29.3	0.24	0.28	0.62	0.33	0.16
Brazil	10.6	0.00	0.08	0.22	0.01	0.28
Brunei Darussalam	30.4	0.31	0.10	0.52	0.24	0.54
Bulgaria	36.8	0.34	0.56	0.34	0.33	0.31
Burkina Faso	25.9	0.33	0.29	0.27	0.27	0.28
Burundi	20.6	0.25	0.22	0.26	0.21	0.20
Cambodia	31.6	0.38	0.18	0.37	0.42	0.46
Cameroon	24.1	0.33	0.21	0.32	0.23	0.19
Canada	79.6	0.69	0.70	0.75	1.00	0.93
Chad	21.6	0.26	0.20	0.26	0.24	0.23
Chile	64.5	1.00	0.38	0.72	0.86	0.59
China	45.8	0.83	0.62	0.48	0.18	0.55
Colombia	50.4	0.89	0.19	1.00	0.55	0.43
Costa Rica	28.3	0.24	0.29	0.40	0.24	0.26

(continued)

Countries	ASP	Product innovation	Process innovation	High growth	International-ization	Risk capital
Côte d'Ivoire	26.9	0.35	0.20	0.31	0.32	0.34
Croatia	50.1	0.22	0.56	0.63	0.93	0.66
Cyprus	50.9	0.54	0.39	0.61	1.00	0.50
Czech Republic	63.5	0.65	0.87	0.75	1.00	0.64
Denmark	71.6	1.00	0.80	0.74	0.58	0.91
Dominican Republic	24.9	0.28	0.13	0.45	0.40	0.11
Ecuador	20.1	0.58	0.16	0.22	0.05	0.13
Egypt	30.5	0.17	0.37	0.63	0.22	0.28
El Salvador	28.6	0.50	0.12	0.53	0.14	0.30
Estonia	61.7	0.61	0.84	0.61	0.84	0.40
Ethiopia	15.6	0.13	0.39	0.22	0.03	0.10
Finland	62.0	0.91	0.93	0.53	0.55	0.41
France	69.7	0.85	0.83	0.68	0.74	0.66
Gabon	30.9	0.21	0.47	0.34	0.43	0.26
The Gambia	29.6	0.39	0.23	0.36	0.32	0.41
Germany	70.3	0.73	0.83	0.78	0.67	0.72
Ghana	17.2	0.12	0.18	0.23	0.17	0.19
Greece	41.4	0.37	0.51	0.19	0.64	0.61
Guatemala	16.0	0.52	0.06	0.08	0.15	0.09
Guyana	13.5	0.30	0.09	0.12	0.07	0.13
Honduras	30.9	0.44	0.08	0.44	0.40	0.42
Hong Kong	59.1	1.00	0.49	0.85	0.76	0.78
Hungary	44.7	0.28	0.46	0.56	0.81	0.39
Iceland	69.7	0.69	0.94	0.70	0.91	0.50
India	24.4	0.38	0.64	0.11	0.12	0.12
Indonesia	11.9	0.21	0.25	0.04	0.01	0.15
Iran	23.6	0.12	0.32	0.44	0.07	0.37
Ireland	66.5	0.70	0.71	0.86	0.90	0.64
Israel	71.7	1.00	1.00	0.63	0.68	0.97
Italy	49.5	0.90	0.74	0.24	0.53	0.58
Jamaica	16.9	0.18	0.12	0.09	0.38	0.12
Japan	61.5	0.98	1.00	1.00	0.55	0.59
Jordan	34.3	0.44	0.37	0.48	0.27	0.33
Kazakhstan	19.2	0.06	0.18	0.43	0.23	0.14
Kenya	35.0	0.45	0.43	0.37	0.30	0.55
Korea	61.4	0.82	0.89	0.64	0.48	0.83
Kuwait	46.5	0.53	0.18	0.34	0.99	0.73
Lao PDR	36.2	0.41	0.11	0.37	0.60	0.72

(continued)

Countries	ASP	Product innovation	Process innovation	High growth	International-ization	Risk capital
Latvia	58.6	0.47	0.41	1.00	0.78	0.61
Lebanon	35.8	0.25	0.30	0.42	0.63	0.27
Liberia	30.3	0.33	0.48	0.33	0.20	0.41
Libya	29.0	0.26	0.15	0.52	0.34	0.38
Lithuania	56.5	0.36	0.49	0.90	0.80	0.59
Luxembourg	61.6	1.00	0.80	0.42	1.00	0.79
Macedonia	40.0	0.24	0.31	0.51	0.64	0.44
Madagascar	24.1	0.37	0.21	0.32	0.26	0.20
Malawi	21.6	0.53	0.77	0.02	0.07	0.04
Malaysia	33.0	0.41	0.65	0.20	0.25	0.28
Mali	27.2	0.35	0.33	0.32	0.29	0.25
Mauritania	27.9	0.27	0.48	0.29	0.27	0.27
Mexico	23.7	0.40	0.23	0.26	0.10	0.28
Moldova	38.9	0.28	0.48	0.55	0.56	0.31
Montenegro	43.3	0.31	0.42	0.47	0.88	0.45
Morocco	28.1	0.10	0.46	0.32	0.72	0.11
Mozambique	29.2	0.29	0.46	0.29	0.28	0.34
Myanmar	30.6	0.27	0.18	0.24	0.51	0.69
Namibia	38.1	0.62	0.39	0.35	0.50	0.28
Netherlands	60.3	0.73	0.69	0.36	0.70	0.78
Nicaragua	29.9	0.49	0.06	0.41	0.35	0.40
Nigeria	26.6	0.25	0.24	0.35	0.34	0.25
Norway	48.8	0.36	0.62	0.36	0.43	0.76
Oman	42.6	0.50	0.20	0.37	0.58	0.69
Pakistan	25.2	0.39	0.32	0.40	0.20	0.09
Panama	19.4	0.28	0.25	0.09	0.19	0.19
Paraguay	34.5	0.30	0.12	0.36	0.68	0.49
Peru	25.1	0.28	0.20	0.23	0.29	0.35
Philippines	23.5	0.53	0.25	0.13	0.28	0.10
Poland	57.4	0.72	0.45	0.63	0.94	0.54
Portugal	57.4	0.53	0.75	0.50	1.00	0.59
Puerto Rico	39.9	0.44	0.32	0.23	0.53	0.62
Qatar	56.7	0.75	0.88	0.43	0.69	0.75
Romania	56.1	0.40	0.45	0.88	0.84	0.50
Russia	26.2	0.21	0.35	0.51	0.09	0.29
Rwanda	27.0	0.42	0.18	0.35	0.26	0.30
Saudi Arabia	49.9	0.52	0.24	0.94	0.36	0.81
Senegal	30.5	0.38	0.40	0.35	0.33	0.25
Serbia	29.5	0.32	0.58	0.27	0.15	0.26
Sierra Leone	24.8	0.28	0.20	0.30	0.23	0.39

(continued)

Countries	ASP	Product innovation	Process innovation	High growth	International-ization	Risk capital
Singapore	78.8	0.64	0.98	1.00	1.00	0.94
Slovakia	54.7	0.45	0.47	0.59	1.00	0.82
Slovenia	54.8	0.53	0.84	0.63	0.81	0.56
South Africa	48.1	0.83	0.67	0.60	0.56	0.28
Spain	42.3	0.39	0.62	0.26	0.33	0.66
Sri Lanka	35.0	0.52	0.23	0.49	0.20	0.53
Suriname	12.1	0.13	0.12	0.03	0.33	0.05
Swaziland	21.6	0.18	0.25	0.19	0.32	0.22
Sweden	63.5	0.72	0.97	0.41	0.66	0.64
Switzerland	71.1	0.86	0.80	0.38	1.00	1.00
Taiwan	79.0	1.00	0.80	1.00	0.60	1.00
Tanzania	29.8	0.36	0.44	0.32	0.24	0.37
Thailand	27.7	0.48	0.31	0.34	0.08	0.34
Trinidad and Tobago	21.5	0.11	0.07	0.47	0.30	0.23
Tunisia	30.7	0.46	0.46	0.40	0.15	0.18
Turkey	63.7	0.80	0.45	1.00	0.45	0.81
Uganda	12.3	0.09	0.25	0.07	0.12	0.13
Ukraine	38.1	0.36	0.58	0.34	0.42	0.59
United Arab Emirates	71.4	0.81	0.48	1.00	0.79	1.00
United Kingdom	64.3	0.63	0.67	0.66	0.63	0.64
United States	86.8	0.84	0.88	0.87	0.94	1.00
Uruguay	30.7	0.47	0.35	0.40	0.28	0.14
Venezuela	11.4	0.16	0.12	0.18	0.04	0.09
Vietnam	31.5	0.46	0.20	0.41	0.21	0.49
Zambia	22.2	0.20	0.26	0.11	0.56	0.15