

CORRECTION

Open Access



Correction to: Multiple arboviral infections during a DENV-2 outbreak in Solomon Islands

Andrew Waleluma Darcy¹, Seiji Kanda^{1*}, Tenneth Dalipanda², Cynthia Joshua², Takaki Shimono¹, Pheophet Lamaningao¹, Nobuyuki Mishima¹ and Toshimasa Nishiyama¹

Correction to: Trop Med Health 48, 33 (2020)
<https://doi.org/10.1186/s41182-020-00217-8>

Following the publication of the original article [1], it was noted that Fig. 4 and Fig. 5 were exchanged. The figure legends for Fig. 4 and Fig. 5 are correct.

The correct figures have been included in this correction, and the original article has been corrected.

Author details

¹Department of Hygiene and Public Health, Kansai Medical University, Hirakata, Japan. ²Ministry of Health & Medical Services, Honiara, Solomon Islands.

Published online: 11 June 2020

Reference

1. Darcy, et al. *Trop Med Health*. 2020;48:33.

The original article can be found online at <https://doi.org/10.1186/s41182-020-00217-8>.

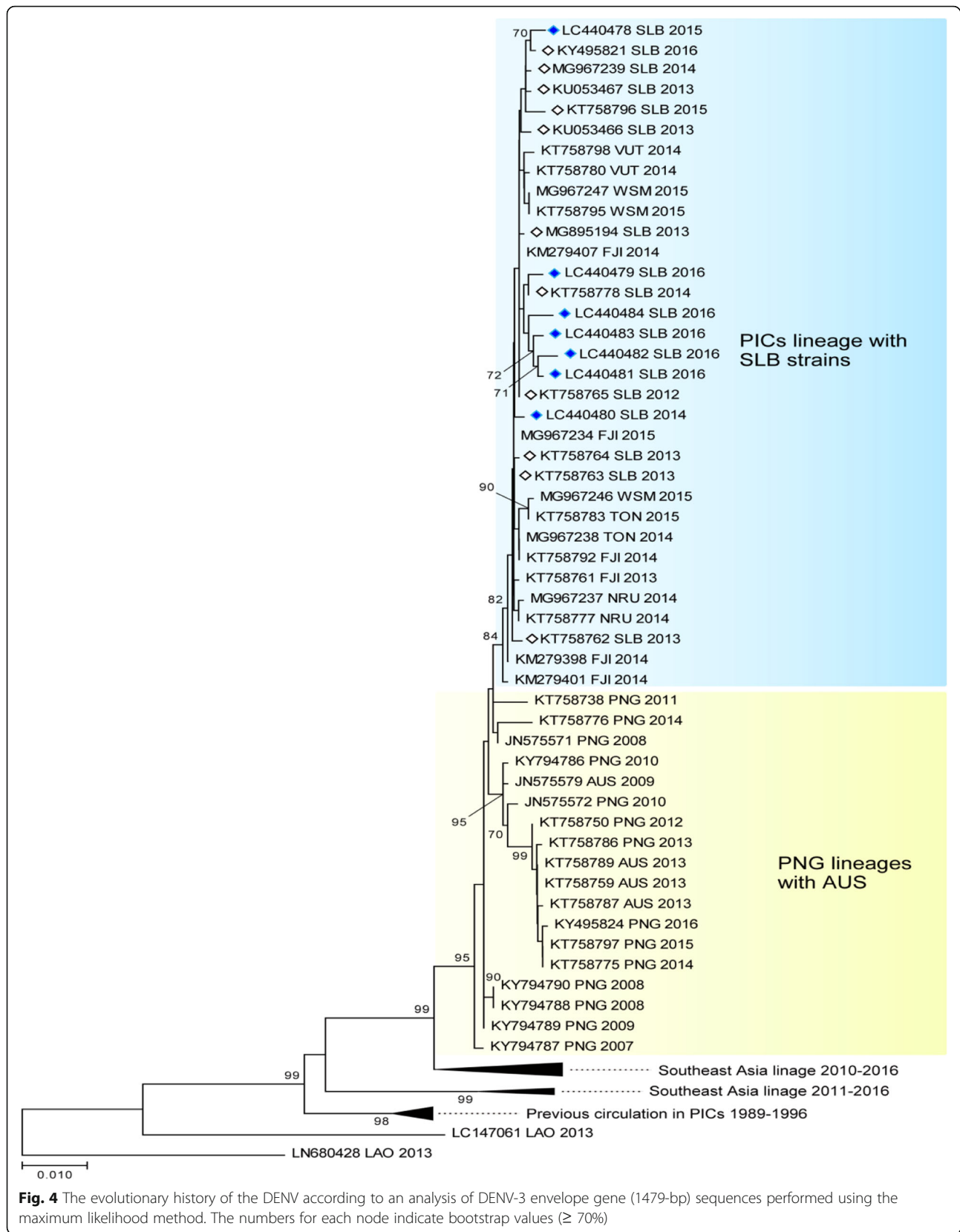
* Correspondence: kandas@hirakata.kmu.ac.jp

¹Department of Hygiene and Public Health, Kansai Medical University, Hirakata, Japan

Full list of author information is available at the end of the article



© The Author(s). 2020 **Open Access** This article is licensed under a Creative Commons Attribution 4.0 International License, which permits use, sharing, adaptation, distribution and reproduction in any medium or format, as long as you give appropriate credit to the original author(s) and the source, provide a link to the Creative Commons licence, and indicate if changes were made. The images or other third party material in this article are included in the article's Creative Commons licence, unless indicated otherwise in a credit line to the material. If material is not included in the article's Creative Commons licence and your intended use is not permitted by statutory regulation or exceeds the permitted use, you will need to obtain permission directly from the copyright holder. To view a copy of this licence, visit <http://creativecommons.org/licenses/by/4.0/>.



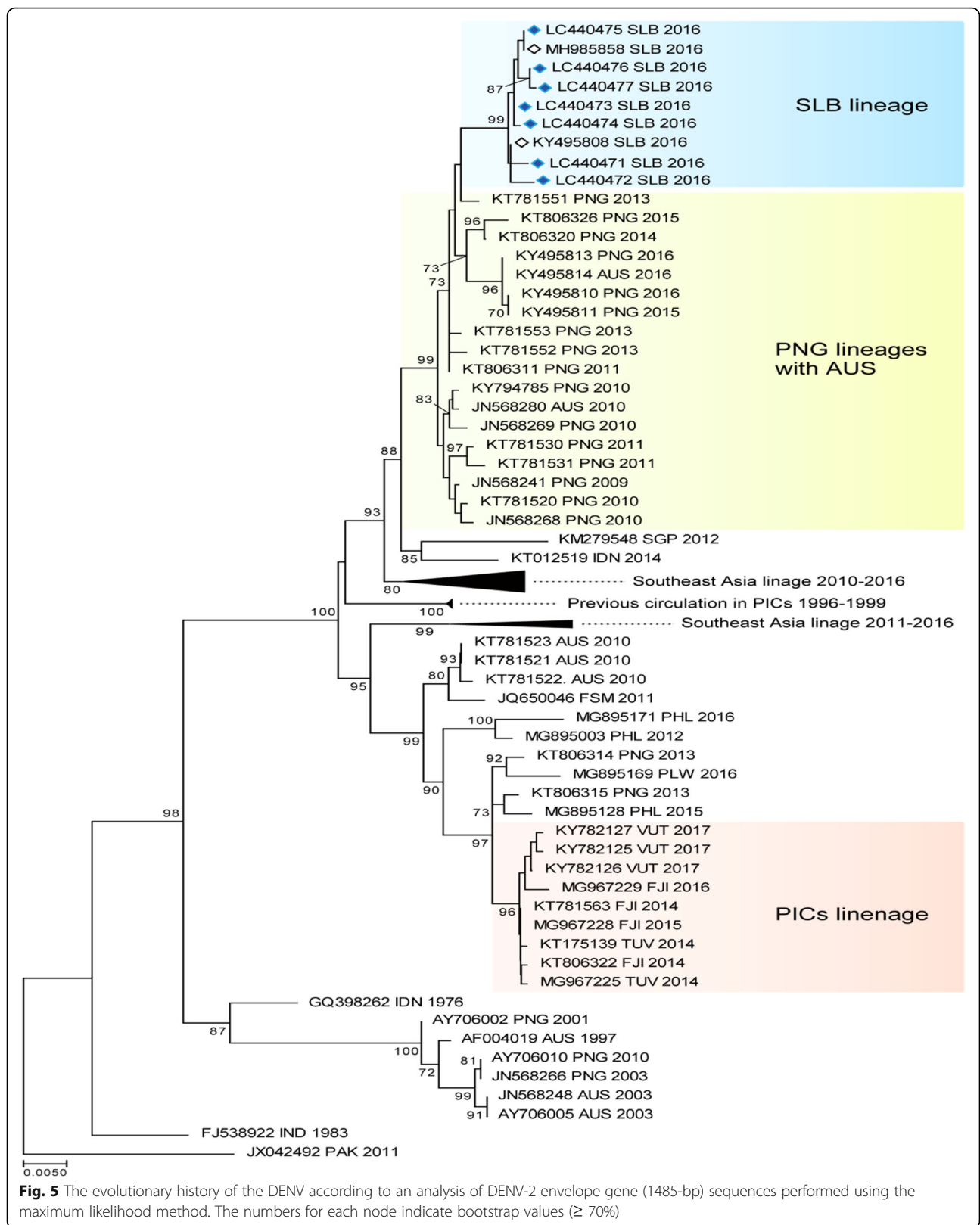


Fig. 5 The evolutionary history of the DENV according to an analysis of DENV-2 envelope gene (1485-bp) sequences performed using the maximum likelihood method. The numbers for each node indicate bootstrap values ($\geq 70\%$)