

RESEARCH ARTICLE

Open Access



Comparison of patients hospitalized with COVID-19, H7N9 and H1N1

Li-Si Deng^{1†}, Jing Yuan^{2†}, Li Ding^{1†}, Yuan-Li Chen³, Chao-Hui Zhao¹, Gong-Qi Chen¹, Xing-Hua Li¹, Xiao-He Li², Wen-Tao Luo¹, Jian-Feng Lan², Guo-Yu Tan², Sheng-Hong Tang², Jin-Yu Xia^{1*} and Xi Liu^{1*}

Abstract

Background: There is an urgent need to better understand the novel coronavirus, severe acute respiratory syndrome coronavirus 2 (SARS-CoV-2), for that the coronavirus disease 2019 (COVID-19) continues to cause considerable morbidity and mortality worldwide. This paper was to differentiate COVID-19 from other respiratory infectious diseases such as avian-origin influenza A (H7N9) and influenza A (H1N1) virus infections.

Methods: We included patients who had been hospitalized with laboratory-confirmed infection by SARS-CoV-2 ($n = 83$), H7N9 ($n = 36$), H1N1 ($n = 44$) viruses. Clinical presentation, chest CT features, and progression of patients were compared. We used the Logistic regression model to explore the possible risk factors.

Results: Both COVID-19 and H7N9 patients had a longer duration of hospitalization than H1N1 patients ($P < 0.01$), a higher complication rate, and more severe cases than H1N1 patients. H7N9 patients had higher hospitalization-fatality ratio than COVID-19 patients ($P = 0.01$). H7N9 patients had similar patterns of lymphopenia, neutrophilia, elevated alanine aminotransferase, C-reactive protein, lactate dehydrogenase, and those seen in H1N1 patients, which were all significantly different from patients with COVID-19 ($P < 0.01$). Either H7N9 or H1N1 patients had more obvious symptoms, like fever, fatigue, yellow sputum, and myalgia than COVID-19 patients ($P < 0.01$). The mean duration of viral shedding was 9.5 days for SARS-CoV-2 vs 9.9 days for H7N9 ($P = 0.78$). For severe cases, the meantime from illness onset to severity was 8.0 days for COVID-19 vs 5.2 days for H7N9 ($P < 0.01$), the comorbidity of chronic heart disease was more common in the COVID-19 patients than H7N9 ($P = 0.02$). Multivariate analysis showed that chronic heart disease was a possible risk factor ($OR > 1$) for COVID-19, compared with H1N1 and H7N9.

Conclusions: The proportion of severe cases were higher for H7N9 and SARS-CoV-2 infections, compared with H1N1. The meantime from illness onset to severity was shorter for H7N9. Chronic heart disease was a possible risk factor for COVID-19. The comparison may provide the rationale for strategies of isolation and treatment of infected patients in the future.

Keywords: SARS-CoV-2, COVID-19, H7N9, H1N1, Comparison

Background

The emergence of human infections with the SARS-CoV-2 (Severe Acute Respiratory Syndrome Coronavirus 2) virus and its rapid national and international spread poses a global health emergency [1]. As of 15 April 2020, the number of patients infected with SARS-CoV-2 has exceeded two million globally, with the highest mortality rate of beyond 10.0% in several countries. Although the outbreak was likely to have started from a zoonotic

*Correspondence: xiajinyu@mail.sysu.edu.cn; liuxi26@mail.sysu.edu.cn

[†]Li-Si Deng, Jing Yuan, and Li Ding contributed equally to this work

¹ Department of Infectious Diseases, The Fifth Affiliated Hospital, Sun Yat-Sen University, Zhuhai 519000, China

Full list of author information is available at the end of the article



© The Author(s) 2020. **Open Access** This article is licensed under a Creative Commons Attribution 4.0 International License, which permits use, sharing, adaptation, distribution and reproduction in any medium or format, as long as you give appropriate credit to the original author(s) and the source, provide a link to the Creative Commons licence, and indicate if changes were made. The images or other third party material in this article are included in the article's Creative Commons licence, unless indicated otherwise in a credit line to the material. If material is not included in the article's Creative Commons licence and your intended use is not permitted by statutory regulation or exceeds the permitted use, you will need to obtain permission directly from the copyright holder. To view a copy of this licence, visit <http://creativecommons.org/licenses/by/4.0/>. The Creative Commons Public Domain Dedication waiver (<http://creativecommons.org/publicdomain/zero/1.0/>) applies to the data made available in this article, unless otherwise stated in a credit line to the data.

transmission and associated with live wild animals, it has soon been confirmed that direct human-to-human transmission was occurring [2].

It has been reported that highest viral loads (inversely related to CT value) were detected soon after symptom onset, with higher viral loads detected in the nose than in the throat; it has suggested that the viral nucleic acid shedding pattern of patients infected with SARS-CoV-2 resembles that of patients with influenza and appears different from that seen in patients infected with SARS-CoV [3]. Besides, the pattern of transmission and the characteristics of the disease are similar to influenza initially, although they are from different viral families [4]. It may confuse in identifying influenza and COVID-19 (the Coronavirus disease 2019) for that common symptoms include fever and cough, whereas gastrointestinal symptoms (eg, nausea, vomiting, diarrhea) [4]. In the past decade, two highly pathogenic influenza virus, the avian influenza A (H7N9) and influenza A/H1N1/2009 virus have emerged in two separate events.

The pandemic caused by the influenza A/H1N1/2009 virus starting in the spring of 2009 has caused significant morbidity and mortality in certain patients [5, 6]. During the spring of 2013, cases of human infection with avian influenza A (H7N9) virus were first reported in China, evidence emerged in many cities and regions; most of the cases were severe, with high fatality; as of May 9 2013, the World Health Organization (WHO) had reported 131 laboratory-confirmed cases, including 32 deaths [7–9].

Understanding the clinical characteristics and determinants of the severity of disease due to SARS-CoV-2 virus infection is essential both for the identification and clinical management of high-risk cases. To provide insights into the pathogenesis of SARS-CoV-2 virus infection, we compared the clinical presentation, chest CT features, and progression of patients hospitalized with SARS-CoV-2, H7N9, and H1N1 virus infections. We also compared the characteristics of severe cases between COVID-19 and H7N9, severe cases with H1N1 were not included in the comparison because the number was just five and small amounts of data may not be representative.

Methods

Study design and participants

The patients with laboratory confirmed SARS-CoV-2 infection were hospitalized between 17 January 2020 and 20 March 2020, and H1N1 virus infections were hospitalized between 20 March 2017 and 8 March 2019, at The Fifth Affiliated Hospital of Sun Yat-Sen University. Patients with H7N9 virus infection were hospitalized between 18 December 2013 and 28 February 2015, at Shenzhen Third People's Hospital. All subjects with virus infection reported in this manuscript were hospitalized

patients and had been laboratory confirmed by real-time reverse transcriptase polymerase chain reaction (RT-PCR). Besides, all patients with H1N1 and H7N9 had been hospitalized for pneumonia or severe symptoms (eg, uncontrollable fever, shortness of breath, severe cough, hemoptysis, symptoms associated with comorbidities); but for hospitalized COVID-19 cases, only patients with pneumonia were included in the analysis.

Data collection

All the clinical data on signs and symptoms, underlying comorbidities, laboratory results, chest CT scans, and treatment measures were retrospectively extracted from electronic medical records and checked by both on-site and off-site doctors. We extracted the baseline data from the patients after admission. The RT-PCR test was performed using nasal and pharyngeal swab specimens, RT-PCR was performed every other day and three consecutive days once negative for SARS-CoV-2 test after admission to hospital, RT-PCR was performed every other day and two consecutive days once negative for H7N9's test. Chest CT scans were performed on admission (except for two pregnant patients with H1N1 virus infections), and analyzed according to the number of lung lobes involvement. The total CT score was the sum of the individual lobar involvement. Fever was defined as the axillary temperature of at least 37.3 °C. Severe cases were defined by the patient experiencing an oxygenation index under 300 mmHg or admission to an intensive care unit.

Statistical analysis

We used χ^2 and Fischer's exact tests for categorical variables, whereas we used the student's *t*-test or Mann–Whitney *U* test for continuous variables to assess the differences. We did statistical analyses using SPSS software (version 13.0 SPSS, Chicago, Illinois). The significance for all statistical analyses was defined as $P < 0.05$. We used the Kaplan–Meier method to estimate survival curves for death. The same approach was used to determine the time for invasive mechanical ventilation or tracheal intubation. The Logistic regression model was used to explore the possible risk factors. We used kernel density to determine the distribution of the number of days of hospitalization, and the days from illness onset to severity. Severity was defined by the patient experiencing an oxygenation index under 300 mmHg or admission to an intensive care unit.

Results

Patient characteristics

Data were included 83 patients with COVID-19, 36 patients with H7N9, and 44 patients with H1N1 virus

infections. The median age of subjects hospitalized with COVID-19 was 46.5 years, compared to 54.5 years for H7N9 patients and 48.0 years for H1N1 patients (Table 1). The prevalence of diabetes was lower in subjects with COVID-19 compared with the H7N9 group. Subjects hospitalized with H7N9 and H1N1 had the highest prevalence of hypertension and smoking. But, no other statistically significant differences in chronic

Table 1 Characteristics of Patients hospitalized with COVID-19, H7N9, and H1N1

Variable	COVID-19 (n = 83)	H7N9 (n = 36)	P value*	H1N1 (N = 44)	P value#
<i>Characteristic</i>					
Age, years, median (range)	53 (3–80)	54.5 (21–82)	0.24	48.0 (16–84)	0.69
Male	35 (42.2%)	23 (63.9%)	0.04	26 (59.1%)	0.12
Chronic heart disease	22 (26.5%)	5 (13.8%)	0.16	4 (9.1%)	0.02
Chronic lung disease	3 (3.6%)	1 (2.8%)	1	2 (4.5%)	1
Chronic renal disease	3 (3.6%)	1 (2.8%)	1	7 (15.9%)	0.03
Chronic liver disease	3 (3.6%)	3 (8.3%)	0.37	3 (6.8%)	0.42
Diabetes	7 (8.4%)	9 (25.0%)	0.02	3 (6.8%)	1
Hypertension	15 (18.1%)	14 (38.9%)	0.02	13 (29.5%)	0.18
Malignancy	4 (4.8%)	0 (0%)	0.31	4 (9.1%)	0.45
Smoking history	3 (3.6%)	6 (16.7%)	0.02	8 (18.2%)	0.02
Hospital stays	20.7 (8.5)	19.5 (9.0)	0.28	5.3 (4.1)	< 0.01
Severe cases	29 (34.9%)	30 (83.3%)	< 0.01	5 (11.4%)	< 0.01
Dead	1 (1.2%)	5 (13.9%)	0.01	1 (2.3%)	1
Glucocorticoids	10 (12.0%)	28 (77.8)	< 0.01	0	0.02
Antiviral	83 (100%)	36 (100%)	1	44 (100%)	1
Antibiotics	53 (63.9%)	36 (100%)	< 0.01	25 (56.8%)	0.45
Complication	27 (32.5%)	31 (86.1%)	< 0.01	6 (13.6%)	0.03
<i>Symptoms</i>					
Fever (≥ 37.3 °C)	60 (72.3%)	36 (100%)	< 0.01	44 (100%)	< 0.01
Any cough	70 (84.3%)	34 (94.4%)	0.15	40 (91%)	0.41
Dry cough	64 (77.1%)	30 (83.3%)	0.44	25 (56.8%)	0.02
Yellow sputum	6 (7.2%)	19 (52.8%)	< 0.01	15 (34.1%)	< 0.01
Hemoptysis	1 (1.2%)	8 (22.2%)	< 0.01	0 (0%)	1
Myalgia	10 (12.0%)	12 (33.3%)	< 0.01	17 (38.6%)	< 0.01
Fatigue	11 (13.3%)	14 (38.9%)	< 0.01	25 (56.8%)	< 0.01
Shortness of breath	5 (6.0%)	6 (16.7%)	0.07	5 (11.4%)	0.29
Gastrointestinal symptoms	10 (12.0%)	7 (19.4%)	0.39	16 (36.4%)	< 0.01
<i>Laboratory findings and CT images</i>					
AST	23.5 (9.6)	100.7 (110.7)	< 0.01	29.4 (13.9)	< 0.01
ALT	22.5 (15.6)	58.7 (55.4)	< 0.01	19.3 (10.9)	0.13
CK	93.4 (107.6)	796.5 (1367.3)	< 0.01	207.8 (336.4)	< 0.01
LDH	187.8 (54.6)	701.9 (484.2)	< 0.01	213.5 (74.8)	0.01
Leukopenia	15 (18.1%)	7 (19.4%)	0.86	3 (6.8%)	0.11
Lymphopenia	25 (30.1%)	32 (88.9%)	< 0.01	23 (52.2%)	0.01
Neutropenia	21 (25.3%)	2 (5.6%)	0.01	3 (6.8%)	0.02
Neutrophilia	2 (2.4%)	9 (25%)	< 0.01	8 (18.2%)	< 0.01
Thrombocytopenia	8 (9.6%)	14 (38.9%)	< 0.01	4 (9.1%)	0.92
Elevated CRP	22 (26.5%)	35 (97.2%)	< 0.01	30 (68.2%)	< 0.01
Duration of viral shedding	9.5 (6.1)	9.9 (6.2)	0.78	NA	NA
Lung lobes involvement	3 (1–5)	5 (1–5)	< 0.01	0 (0–5)	< 0.01

Data are presented as mean (SD), medians (interquartile ranges) or No. (%). P value*: compared "COVID-19" and "H7N9"; P value#: compared "COVID-19" and "H1N1"
 ALT alanine aminotransferase, AST aspartate transaminase, CK creatine kinase, LDH lactate dehydrogenas, CRP C-reactive protein

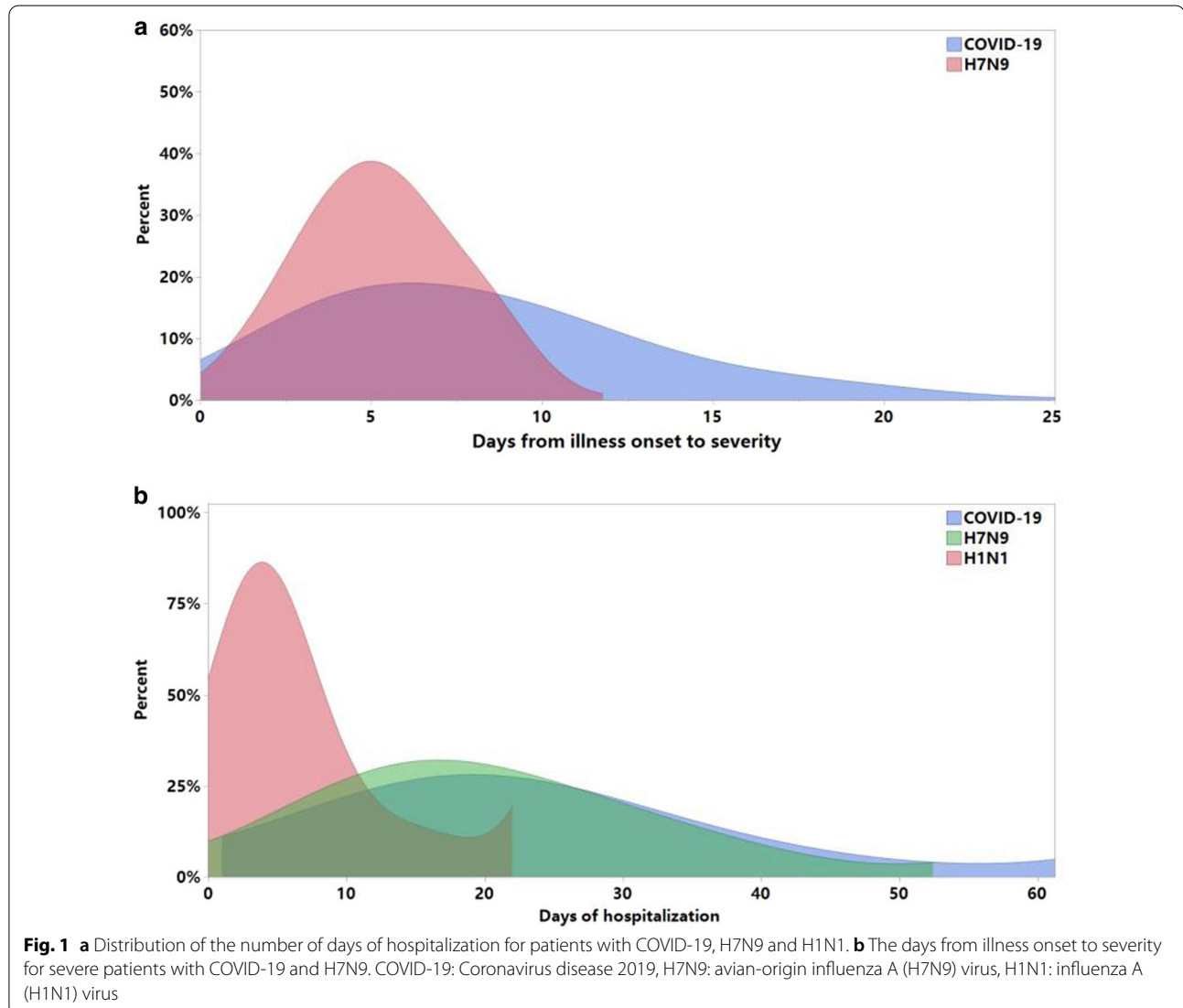
medical conditions were noted between the three groups. Before we collect the data, all the patients hospitalized with COVID-19 were discharged from hospital except for one death. Both COVID-19 and H7N9 patients had a longer duration of hospitalization than H1N1 patients ($P < 0.01$) (Fig. 1), a higher complication rate, and more severe cases than H1N1 patients. H7N9 patients had higher hospitalization-fatality ratio than COVID-19 patients ($P = 0.01$) (Table 1).

Either H7N9 or H1N1 patients had more obvious symptoms, like fever, fatigue, yellow sputum, and myalgia than COVID-19 patients ($P < 0.01$). Gastrointestinal symptoms were most common in H1N1 cases, while hemoptysis symptoms were most common in H7N9 cases (Table 1). H7N9 patients had similar patterns of lymphopenia, neutrophilia, elevated alanine aminotransferase, C-reactive protein, and those seen in H1N1 patients,

which were all significantly different from patients with COVID-19 ($P < 0.01$) (Table 1). Thrombocytopenia was more common in patients with H7N9, elevated lactate dehydrogenase was equally common in H7N9 and H1N1 patients, and least common in COVID-19 patients. But, no other statistically significant differences in baseline characteristics.

Comorbidity and risk factors

Compared patients hospitalized with COVID-19, the prevalence of hypertension and diabetes were higher in subjects with H7N9 ($P = 0.02$), whereas the prevalence of chronic renal disease was higher in subjects with H1N1 ($P = 0.03$). A history of smoking was more common in subjects hospitalized with H7N9 and H1N1 (Table 1). Chronic heart disease more frequent in subjects with COVID-19, compared with H1N1 (Table 1),



whereas for severe cases, COVID-19 had the highest prevalence of chronic heart disease than H7N9 ($P=0.02$) (Table 2). Multivariate analysis showed that chronic heart disease was a possible risk factor ($OR > 1$) for COVID-19, compared with H1N1 and H7N9 (Additional file 1: Table S1).

Table 2 Characteristics of severe patients with COVID-19 or H7N9

Variable	COVID-19 (n = 29)	H7N9 (n = 30)	P value
<i>Characteristic</i>			
Age, years, median (range)	59 (32–80)	56 (21–82)	0.98
Male	15 (51.7%)	20 (66.7%)	0.29
Chronic heart disease	12 (41.4%)	4 (13.3%)	0.02
Chronic lung disease	2 (6.9%)	1 (3.3%)	0.61
Chronic renal disease	2 (6.9%)	1 (3.3%)	0.61
Chronic liver disease	0	3 (10.0%)	0.24
Diabetes	5 (17.2%)	9 (30.0%)	0.36
Hypertension	9 (31.0%)	14 (46.7%)	0.29
Malignancy	0	0	1.00
Smoking history	1 (3.4%)	5 (16.7%)	0.19
Hospital stays	21.3 (6.9)	20.6 (8.9)	0.71
Dead	1 (3.4%)	5 (16.7%)	0.19
The days from illness onset to severity	8.0 (4.6)	5.2 (2.1)	<0.01
<i>Symptoms</i>			
Fever (≥ 37.3 °C)	26 (89.7%)	27 (90.0%)	1.00
Any cough	15 (51.7%)	28 (93.3%)	<0.01
Dry cough	10 (34.5%)	10 (33.3%)	1.00
Yellow sputum	5 (17.2%)	18 (60.0%)	<0.01
Hemoptysis	1 (3.4%)	8 (26.7%)	0.03
Myalgia	5 (17.2%)	11 (36.7%)	0.14
Fatigue	8 (27.6%)	12 (40.0%)	0.41
Gastrointestinal symptoms	4 (13.8%)	7 (23.3%)	0.51
<i>Laboratory findings and CT images</i>			
AST	27.5 (11.1)	111.1 (118.4)	<0.01
ALT	26.2 (17.4)	61.7 (54.0)	<0.01
CK	167.5 (31.0)	1272.3 (268.8)	<0.01
LDH	215.6 (50.6)	745.8 (512.9)	<0.01
Leukopenia	7 (24.1%)	7 (23.3%)	1.00
Lymphopenia	15 (51.7%)	27 (90.0%)	<0.01
Neutropenia	9 (31.0%)	2 (6.7%)	0.02
Neutrophilia	1 (3.4%)	28 (93.3%)	<0.01
Thrombocytopenia	4 (13.8%)	10 (33.3%)	0.12
Elevated CRP	19 (65.5%)	29 (96.7%)	<0.01
Duration of viral shedding	10.6 (6.6)	10.2 (6.4)	0.86
Lung lobes involvement	4	5	0.14

Data are presented as mean (SD), medians (interquartile ranges) or No. (%)

ALT alanine aminotransferase, AST aspartate transaminase, CK creatine kinase, LDH lactate dehydrogenase, CRP C-reactive protein

Characteristics of severe cases with COVID-19 or H7N9

The mean time from illness onset to severity was 8.0 days for COVID-19 vs 5.2 days for H7N9 ($P < 0.01$) (Fig. 1). For the severe cases, there were no significant differences in the hospitalization-fatality ratio and the lung lobes involvement between COVID-19 and H7N9 (Table 2). The days from hospitalization to mechanical ventilation and the days from illness onset to mechanical ventilation in severe cases of COVID-19 patients were more protracted than H7N9 and H1N1 cases (Fig. 2). Symptoms, like cough, yellow sputum and hemoptysis, were more common in severe cases with H7N9 than COVID-19; but, Symptoms, like fever, fatigue myalgia, were equally common in the two groups of severe cases, that was different from the comparison of general cases (Table 2). Except that, the other results of comparison for the severe cases between COVID-19 and H7N9 were similar to the comparison of general cases.

Chest CT findings

The proportion of pneumonia and the number of lobes involved in COVID-19 patients was higher than in H1N1 cases, but lower than in H7N9 cases (Table 1) (Details in Additional file 1: Table S2). In COVID-19 group, 77 (93%) of 83 patients' chest CT manifestations were multiple ground-glass densification shadows with various diffusions in both lungs, mainly distributed under the pleura indistinct nodules may be presented in some cases (Fig. 3). 81% H7N9 cases showed multilobar uneven consolidation and diffuse alveolar opacities. The chest CT radiological findings in 89% hospitalized H1N1 cases with pneumonia were ground-glass opacity and small patchy shadows with diffused distribution in the right middle and lower lungs.

Duration of viral shedding

The mean duration of viral shedding for nasopharyngeal specimens was 9.5 days for SARS-CoV-2 vs 9.9 days for H7N9 ($P=0.78$) (Details in Additional file 1: Table S3); for severe cases, it was 10.6 days for SARS-CoV-2 vs 10.2 days for H7N9 ($P=0.86$). One of the asymptomatic COVID-19 cases in our study, 59-year-old male patient, accompanying with hypertension and diabetes, was tested positive for both nasopharyngeal and stool specimens; while the duration of viral shedding in stool was up to 68 days.

Discussion

The clinical presentation and laboratory indices at hospital admission were common in H7N9 and H1N1 patients, except that productive hemoptysis, thrombocytopenia were more common in H7N9 patients, those

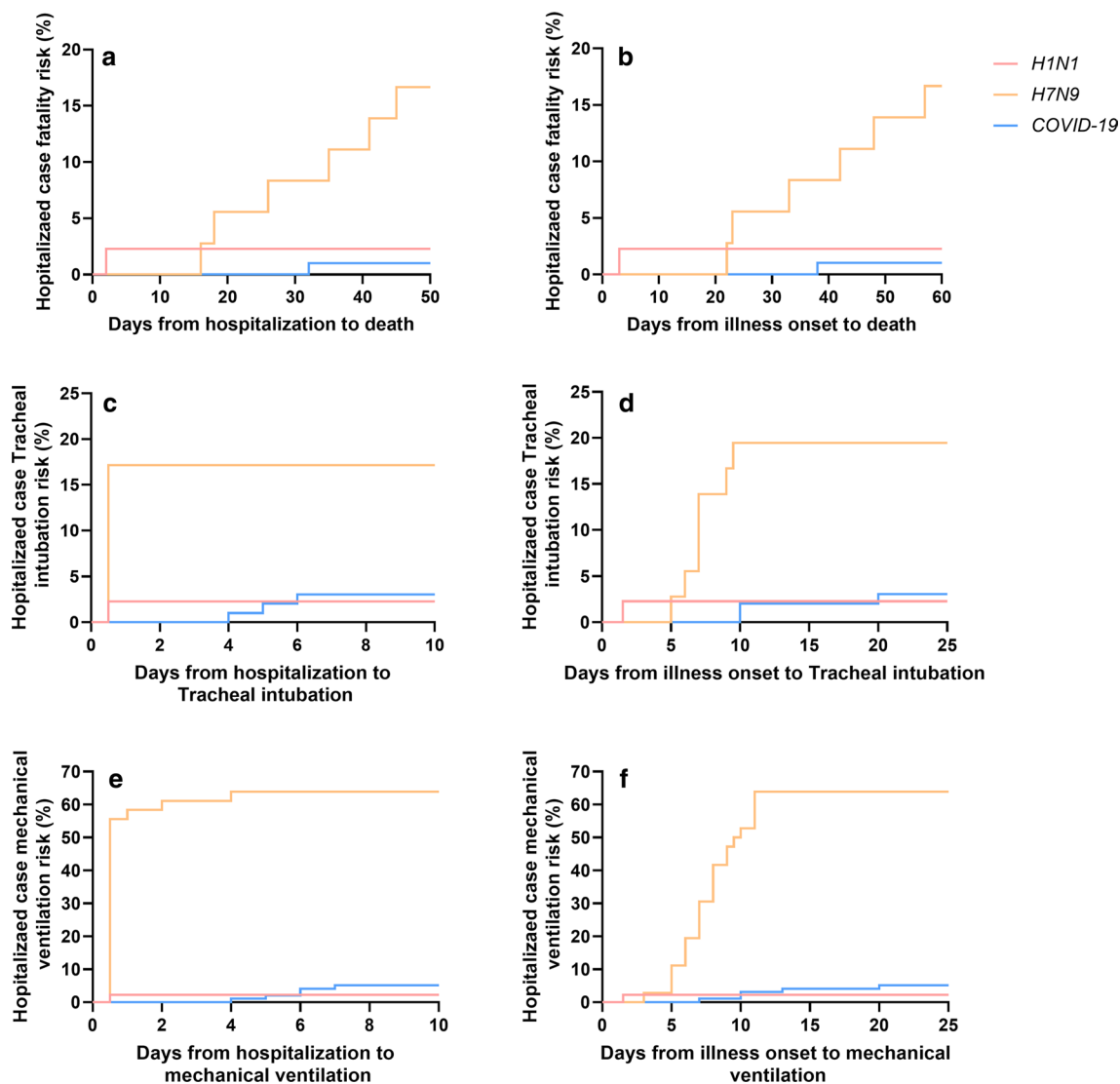


Fig. 2 Case fatality risk and invasive ventilation risk in hospitalized patients. **a** Days from hospitalization to death. **b** days from illness onset to death. **c** Days from hospitalization to tracheal intubation. **d** Days from illness onset to tracheal intubation. **e** Days from hospitalization to mechanical ventilation. **f** Days from illness onset to mechanical ventilation

two factors have been associated with more severe outcomes [10]. Compared with features in patients with H7N9 and H1N1, patients with COVID-19 were more likely to exhibit the mild symptoms. Chinese Center for Disease Control and Prevention (China CDC) recently reported that most of the confirmed cases were classified as mild or moderate, 13.8% as severe, and only 4.7% as critically ill [11] Notably, the viral load that was detected in the asymptomatic patients was similar to that in the symptomatic patients [3] Recent research indicated that asymptomatic carriers can result in person-to-person transmission and should be considered a source of COVID-19 infection [12]. Unlike H7N9 and H1N1, the

transmission of COVID-19 occurs during the prodromal period when those infected were mildly ill, and carry on usual activities, which contributes to the spread of infection.

The mean duration of viral shedding for nasopharyngeal specimens was 9.8 days for SARS-CoV-2 vs 9.9 days for H7N9, for severe cases, it was 10.6 days vs 10.2 days. It has been widely investigated that the duration of viral shedding in H1N1 ranged from 4 to 8 days [13–15]. It seems likely that SARS-CoV-2 infections were characterized by the prolonged viral shedding, compared with H1N1. SARS-CoV-2 viral RNA has been detected in the serum, urine, and feces of COVID-19

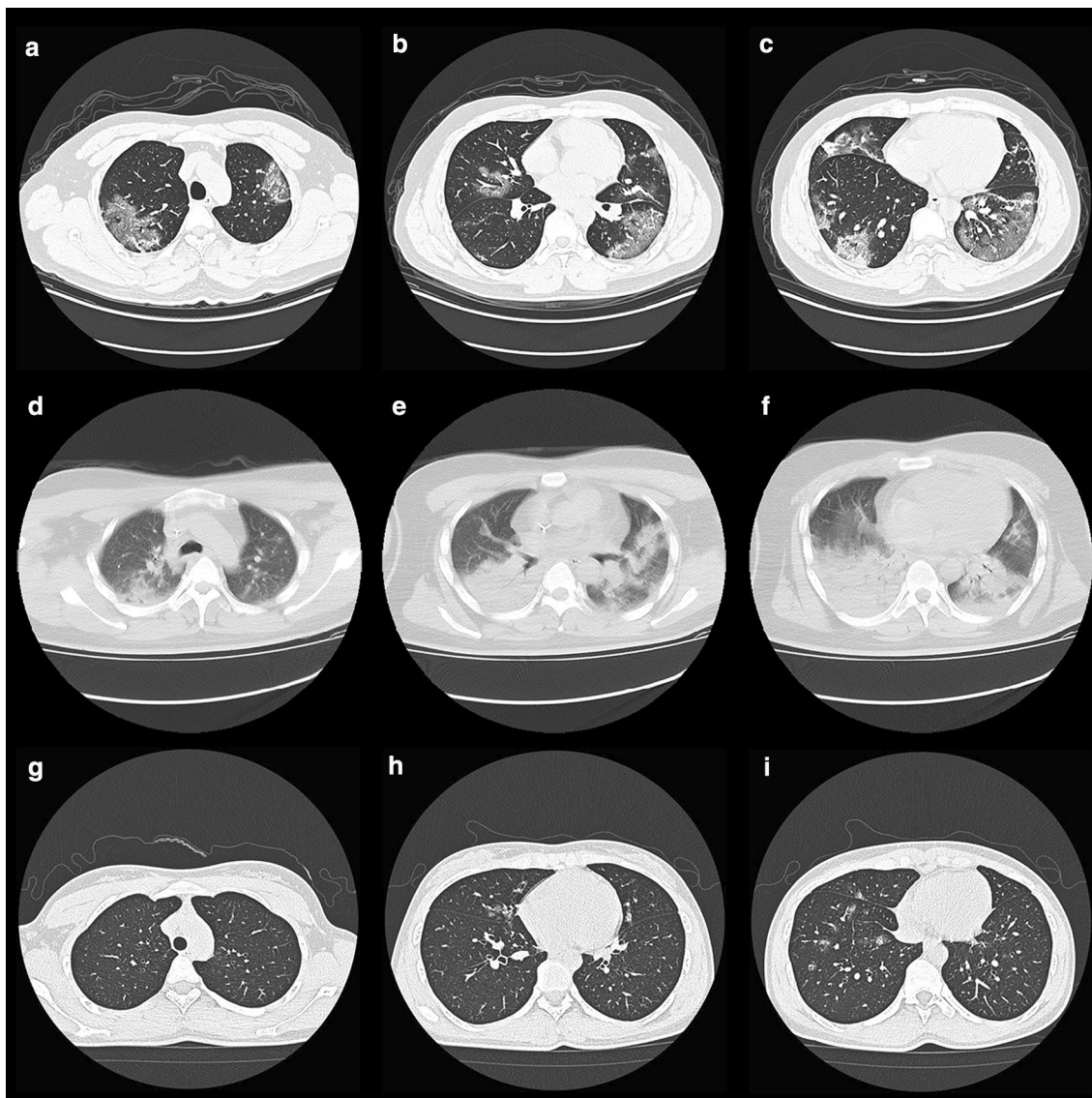


Fig. 3 **a–c** Chest CT Images of a 36-year-old man with COVID-19 on admission, showed multiple ground-glass densification shadows with multiple diffusions in both lungs, mainly distributed under the pleura. **d–f** Chest CT Images of a 32-year-old man infected with H7N9 on admission, showed multilobar patchy consolidation and diffuse alveolar opacities. **g–i** Chest CT Images of a 29-year-old woman infected with H1N1 on admission, showed ground-glass opacity and small patchy shadows with diffused distribution in the right middle and lower lungs

patients, but it is not known if this represents viral replication occurring outside of the respiratory tract [16]. Although the H7N9 patients had high mortality, there had been no confirmed cases of human-to-human transmission, and most infected humans had a history of contact with poultry or of having visited a wet market, and the outbreak of H7N9 had been controlled by integrative measures including the closedown of the wet markets in the affected areas [17–19]. However, the clinical spectrum of SARS-CoV-2 infection appears to be extensive, encompassing asymptomatic infection,

mild upper respiratory symptoms, and spreading by respiratory and fecal–oral transmission.

According to the report of world health organization, the epidemic threshold of seasonal influenza was in December around the world, influenza activity decreased overall or returned to baseline levels in March for most temperate regions [20]. Worldwide, seasonal influenza A (H1N1) viruses accounted for the majority of detections. According to the report of China CDC, the mortality of influenza A (H1N1) diseases was less than 0.01% during the epidemic threshold period

in china [21]. However, SARS-CoV-2 infections had a higher complication rate and more severe cases than H1N1 patients (Table 1). Furthermore, recent research reported that R_0 of COVID-19 might be as high as 6.47 (95% CI 5.71–7.23) [22]. Likely, SARS-CoV-2 activity would not decrease with the change of seasons; long-term control measures are still needed.

Neutrophilia was more common in H7N9 and H1N1 patients, compared with COVID-19 cases. It maybe implied that patients with H7N9 and H1N1 were more likely to develop secondary bacterial infections. H7N9 cases had a higher proportion of glucocorticoids and antibiotics therapy. Increasing the risk of secondary infection, glucocorticoids could delay the clearance of coronavirus nucleic acids without lower hospitalization-fatality ratio for patients with H7N9 diseases [23]. Nevertheless, recent research suggested that timely and appropriate use of corticosteroids, together with ventilator support, should be considered for severe patients to prevent ARDS development [24]. According to the chest CT images of COVID-19 patients on admission, the mainly positive findings were various ground-glass densification shadows with multiple diffusions in both lungs, the pros and cons need to be weighed carefully before antibiotics and glucocorticoids treatment.

The mean time from illness onset to severity was 8.0 days for COVID-19 and 5.2 days for H7N9, it may imply that there was a therapeutic window that could be exploited, provided comprehensive treatment including an active antiviral agent was available. But, if not treated promptly, the asymptomatic or mild cases may develop severe pneumonia, even end up dead. The therapeutic emphasis of COVID-19 was to antiviral early that would decrease the peak viral load and delay the progression of lung lesions; thus this would reduce the hospitalization-fatality ratio [25]. The mean time from illness onset to severity for H7N9 was shorter than COVID-19, the key to controlling disease progression was early detection and timely treatment.

Chronic heart disease more frequent in patients hospitalized with COVID-19, compared with H1N1 (Table 1), whereas for severe cases, COVID-19 had the highest prevalence of chronic heart disease than H7N9, which might be associated with increased secretion of ACE2 in the COVID-19 compared with H7N9 and H1N1. SARS-CoV-2 infection is triggered by binding of the spike protein of the virus to ACE2, which is highly expressed in the heart and lungs [26]. There have been hypothesized that the use of ACE-inhibitors and angiotensin receptor 1 blockers (ARBs) may have effect the course of COVID-19 [27, 28]. Nevertheless, further evidence are required before any recommendations are made about starting or withdrawing ACE-inhibitor and ARB medications.

The comparisons in this study are limited by a lack of parameters of the transmission dynamics. Further research is still needed if the epidemic features of COVID-19 are similar to Seasonal influenza A H1N1 or not.

Conclusions

The proportion of severe cases were higher for H7N9 and SARS-CoV-2 infections, compared with H1N1. The meantime from illness onset to severity was shorter for H7N9, compared with COVID-19. This may imply that there was a therapeutic window that could be exploited before developing into severe cases. Besides, we found that chronic heart disease was associated with an increased risk of COVID-19 severe cases compared with H7N9 and H1N1. Also, the factor that the mild symptoms may contribute to the pandemic of COVID-19. Furthermore, according to the neutrophil responses and the typical CT findings, SARS-CoV-2 infections were less likely to develop secondary infections, which maybe suggest that the progression of COVID-19 is more insidious.

Supplementary information

Supplementary information accompanies this paper at <https://doi.org/10.1186/s40249-020-00781-5>.

Additional file 1: Table S1. Logistic Regression analysis of Chronic heart disease

Additional file 2: Table S2. The number of lobes involved

Additional file 3: Table S3. The details of the virus shedding duration of nasopharyngeal swab for COVID-19 and H7N9

Acknowledgments

We thank the staff of the Fifth Affiliated Hospital, Sun Yat-sen University, and The Shenzhen Third People's Hospital for the clinical care given to the patients and for facilitating access to the relevant medical records.

Authors' contributions

XL, J-YX, L-SD, JY, and LD performed the study. L-SD and XL analyzed the data and wrote the manuscript. S-HT, G-YT, J-FL, W-TL, X-HL, G-QC, X-HL and C-HZ provided clinical data. Y-LC helped the statistical analysis. JY, LD helped edit the paper. J-YX supervised the study and applied for grants. All authors read and approved the final manuscript.

Funding

This work was supported by "Cultivation Project of "Three Major Scientific Research Projects" of Sun Yat-sen University for the Prevention and Control of Corona Virus Disease 2019 in 2020".

Availability of data and materials

The datasets used and/or analysed during the current study are available from the corresponding author on reasonable request.

Ethical approval and consent to participate

The study was approved by the Research Ethics Committee (No-ZDWY[2020] Lunzi No-K22-1) at The Fifth Affiliated Hospital of Sun Yat-Sen University to allow retrospective access to patients' records and files. Written informed consent was waived by the Ethics Commission as this was an observational and retrospective analysis.

Consent for publication

Not applicable.

Competing interests

The authors declare no conflict of interest.

Author details

¹ Department of Infectious Diseases, The Fifth Affiliated Hospital, Sun Yat-Sen University, Zhuhai 519000, China. ² Diagnosis and Treatment of Infectious Diseases Research Laboratory, Shenzhen Third People's Hospital, Shenzhen 518112, China. ³ Department of Hospital Infection Control, The Fifth Affiliated Hospital, Sun Yat-Sen University, Zhuhai 519000, China.

Received: 13 June 2020 Accepted: 18 November 2020

Published online: 02 December 2020

References

- Wang H, Wang Z, Dong Y, et al. Phase-adjusted estimation of the number of Coronavirus Disease 2019 cases in Wuhan, China. *Cell Discov*. 2020;6:10.
- Chan JF, Yuan S, Kok KH, et al. A familial cluster of pneumonia associated with the 2019 novel coronavirus indicating person-to-person transmission: a study of a family cluster. *Lancet*. 2020;395:514–23.
- Zou L, Ruan F, Huang M, et al. SARS-CoV-2 viral load in upper respiratory specimens of infected patients. *N Engl J Med*. 2020;382:1177–9.
- Giannella M, Alonso M, Garcia DVD, et al. Prolonged viral shedding in pandemic influenza A(H1N1): clinical significance and viral load analysis in hospitalized patients. *Clin Microbiol Infect*. 2011;17:1160–5.
- Jamieson DJ, Honein MA, Rasmussen SA, et al. H1N1 2009 influenza virus infection during pregnancy in the USA. *Lancet*. 2009;374:451–8.
- Chowell G, Bertozzi SM, Colchero MA, et al. Severe respiratory disease concurrent with the circulation of H1N1 influenza. *N Engl J Med*. 2009;361:674–9.
- Lam TT, Zhou B, Wang J, et al. Dissemination, divergence and establishment of H7N9 influenza viruses in China. *Nature*. 2015;522:102–5.
- Ding H, Xie L, Sun Z, et al. Epidemiologic characterization of 30 confirmed cases of human infection with avian influenza A(H7N9) virus in Hangzhou. *China BMC Infect Dis*. 2014;14:175.
- Number of confirmed human cases of avian influenza A(H7N9) reported to WHO. Geneva: World Health Organization, May 2013. https://www.who.int/influenza/human_animal_interface/influenza_h7n9/09_ReportWebH7N9Number.pdf. Accessed December 12.
- Wang C, Yu H, Horby PW, et al. Comparison of patients hospitalized with influenza A subtypes H7N9, H5N1, and 2009 pandemic H1N1. *Clin Infect Dis*. 2014;58:1095–103.
- Wu Z, McGoogan JM. Characteristics of and Important lessons from the Coronavirus Disease 2019 (COVID-19) outbreak in China: summary of a report of 72314 cases from the Chinese Center for disease control and prevention. *JAMA*. 2020;323:1239–42.
- Hu Z, Song C, Xu C, et al. Clinical characteristics of 24 asymptomatic infections with COVID-19 screened among close contacts in Nanjing, China. *Sci China Life Sci*. 2020;63:706–11.
- Cowling BJ, Chan KH, Fang VJ, et al. Comparative epidemiology of pandemic and seasonal influenza A in households. *N Engl J Med*. 2010;362:2175–84.
- Na S, Chong YP, Kim MN, et al. Duration of viral shedding in patients admitted to hospital with pandemic influenza A/H1N1 2009 infection. *J Med Virol*. 2011;83:5–9.
- Ling LM, Chow AL, Lye DC, et al. Effects of early oseltamivir therapy on viral shedding in 2009 pandemic influenza A (H1N1) virus infection. *Clin Infect Dis*. 2010;50:963–9.
- Xiao F, Tang M, Zheng X, Liu Y, Li X, Shan H. Evidence for gastrointestinal infection of SARS-CoV-2. *Gastroenterology*. 2020;158(6):1831–3.
- Ji H, Gu Q, Chen LL, et al. Epidemiological and clinical characteristics and risk factors for death of patients with avian influenza A H7N9 virus infection from Jiangsu Province, Eastern China. *PLoS ONE*. 2014;9:e89581.
- Li Q, Zhou L, Zhou M, et al. Epidemiology of human infections with avian influenza A(H7N9) virus in China. *N Engl J Med*. 2014;370:520–32.
- Zhou L, Ren R, Ou J, et al. Risk factors for influenza A(H7N9) disease in China, a matched case control study, October 2014 to April 2015. *Open Forum Infect Dis*. 2016;3:182.
- World Health Organization. Influenza Update N° 364. https://www.who.int/influenza/surveillance_monitoring/updates/2020_03_30_surveillance_update_364.pdf. Accessed April 8.
- The China Disease Prevention and Control Center. Overview of the epidemic situation of statutory infectious diseases in China in December 2019. <http://www.nhc.gov.cn/jkj/s7923/202001/ab5cbab3f8bc46c08cc7b6c4aef85441.shtml>. Accessed April 8.
- Tang B, Wang X, Li Q, et al. Estimation of the transmission risk of the 2019-nCoV and its implication for public health interventions. *J Clin Med*. 2020;9(2):462.
- Cao B, Gao H, Zhou B, et al. Adjuvant corticosteroid treatment in adults with influenza A (H7N9) viral pneumonia. *Crit Care Med*. 2016;44:e318–28.
- Xu Z, Shi L, Wang Y, et al. Pathological findings of COVID-19 associated with acute respiratory distress syndrome. *Lancet Respir Med*. 2020;8:420–2.
- Deng L, Li C, Zeng Q, et al. Arbidol combined with LPV/r versus LPV/r alone against corona virus disease 2019: a retrospective cohort study. *J Infect*. 2020;81(1):e1–5.
- Turner AJ, Hiscox JA, Hooper NM. ACE2: from vasopeptidase to SARS virus receptor. *Trends Pharmacol Sci*. 2004;25:291–4.
- Zheng YY, Ma YT, Zhang JY, Xie X. COVID-19 and the cardiovascular system. *Nat Rev Cardiol*. 2020;17(5):259–60.
- Madjid M, Safavi-Naeini P, Solomon SD, Vardeny O. Potential effects of coronaviruses on the cardiovascular system: a review. *JAMA Cardiol*. 2020;5(7):831–40.

Ready to submit your research? Choose BMC and benefit from:

- fast, convenient online submission
- thorough peer review by experienced researchers in your field
- rapid publication on acceptance
- support for research data, including large and complex data types
- gold Open Access which fosters wider collaboration and increased citations
- maximum visibility for your research: over 100M website views per year

At BMC, research is always in progress.

Learn more biomedcentral.com/submissions

