

RESEARCH

Open Access



Selective impairments of alerting and executive control in HIV-infected patients: evidence from attention network test

Yi-quan Wang^{1,2} , Yang Pan³, Sheng Zhu⁴, Yong-guang Wang^{1,2,5*}, Zhi-hua Shen^{1,2} and Kai Wang^{5,6}

Abstract

Background: Attention ability can be subdivided into three functionally independent networks, i.e., alerting network, orienting network, and executive network. Previous literature has documented that deficits in attention are a common consequence of HIV infection. However, the precise nature of deficits of attention in HIV-infected patients is poorly understood. Accordingly, the aim of the study was to identify whether the HIV-infected patients showed a specific attention network deficit or a general attentional impairment.

Methods: We investigated 27 HIV-infected patients and 31 normal controls with the Attention Network Test (ANT).

Results: The patients exhibited less efficient alerting network and executive network than controls. No significant difference was found in orienting network effect between groups. Our results also indicate a tendency for poorer efficiency on alerting attention and executive attention in patients with $CD4 \leq 200$.

Conclusions: Our findings suggest that HIV-infected patients exhibited selective impairments of attention network of alerting and executive control. The link between lower CD4 T cell count and poorer attention network function imply the importance of starting antiretroviral therapy earlier to avoid irreversible neurocognitive impairment.

Keywords: HIV, Attention network test, Alerting, Orienting, Executive

Background

HIV-associated neurocognitive disorders (HAND) are characterized by disabling cognitive, behavioral and motor dysfunction [1], and are a common hallmark of HIV infected individuals. Although the introduction of combination antiretroviral treatment (cART) has significantly reduced the prevalence of more severe form of HAND [2, 3], the incidence of less severe forms of HAND (i.e., asymptomatic neurocognitive impairment and mild neurocognitive disorder) remain common among HIV patients in the cART era [3–5]. Given the predominance of the milder forms of HAND [4, 6, 7], considerable researches have been conducted to elucidate the component processes of HAND across the domains of information processing speed, executive functions, motor skills,

episodic memory, and etc. [8]. Additionally, neuroimaging studies have found HIV-infected patients exhibited hyperactivity in task-related brain regions despite equal performances as controls [9, 10], suggesting that functional compensation by increasing usage of neural reserves to maintain cognitive performance.

Attention is a core property in human information processing [11], which enables us to process behaviorally relevant information for the guidance of our responses [12]. For HIV-infected patients, deficits in attention are a common consequence of HIV infection [13, 14] and the one of the neurocognitive domains affected early in progression of HIV [14, 15]. Although attention plays the central role in patients' driving ability [16] and was associated with poor medical adherence [17], the precise nature of deficits in attention for HIV-infected patients is poorly understood [14]. In previous studies of HAND, attentional functioning was routinely investigated by clinical neuropsychological tests. While the neuropsychological approach has its clinical

*Correspondence: wangyongguang78@163.com

¹ Department of Brain Functioning Research, The Seventh Hospital of Hangzhou, 305 Tianmushan Road, Hangzhou 310013, Zhejiang, China
Full list of author information is available at the end of the article

convenience, it also has two main disadvantages. Firstly, although these studies considered attention as one of a number of distinguishable cognitive domains, the neuropsychological tests using in these researches required multiple cognitive abilities for successful performance [14]. Secondly, this approach pertained merely to matters of overall attentional functioning rather than the structures of attention. The lack of consistency in the definition of attention [13] would make it difficult to compare results across studies.

Conceptually, attention is not a single entity, but is comprised of multiple components. According to the attention network theory, this basic and sophisticated cognitive ability can be subdivided into three functionally independent networks, i.e., alerting network, orienting network, and executive network [18, 19]. In this frame, the alerting network allows maintenance of a vigilant and alert state, the orienting network allows for selecting the information through the space, and the executive network is responsible for solving the conflict between expectation, stimulus, and response [18].

The Attention Network Test (ANT) was developed to assess the ability of these three separate networks. The efficiency of each network is calculated by averaging reaction times across several different cue and flanker conditions. Since the initial description of the ANT [20], attention network function has been examined using the ANT in different clinical population, including schizophrenia [21], depression [22], ADHD [23], 22q11 deletion syndrome [24], multiple sclerosis [25], and etc. These studies suggested that most of these neuropsychiatric populations exhibited a specific attention network deficit rather than a general attention deficit.

As described above, although deficits in attention are deemed as the one of cognitive declines among HIV-infected patients, however, previous studies failed to address whether the HIV-infected patients showed a specific attention network deficit or a general attentional impairment. Accordingly, we examined HIV-infected patients with the attention network test, to better understand the nature of attentional deficits in the population.

Methods

Participants and procedures

A total of twenty-seven patients with HIV-1 infection were recruited through the voluntary counseling and

testing clinic at Hangzhou Center for Disease Control and Prevention. Among these patients, there were thirteen patients were diagnosed with AIDS, according to the clinical history of AIDS defining illnesses or the nadir CD4 T cell count below 200 cells per microliter. In addition, there were twenty patients with nadir CD4 T cell count below 400 per microliter, including twelve patients being treated with highly active antiretroviral therapies (HAART) containing a HIV protease inhibitor and eight patients that refused HAART therapy.

The average nadir CD4 T cell count for all patients was 298.41 (SD = 223.58) cells per microliter. According to the previous literature [26], to study the possible association between a nadir CD4 T cell count and the pattern of attention network function, all patients were divided into patients with $CD4 \leq 200$ ($n = 12$) and patients with $CD4 > 200$ ($n = 15$).

Thirty-one healthy controls with no HIV-infection history were recruited from local community to serve as a control group. All participants were interviewed by an experienced clinical psychologist with the Structured Clinical Interview for DSM-IV (SCID) [27] and met the following inclusion criteria: (a) negative family history of any psychiatric disorders, (b) no evidence of current or previous head injury, CNS disease or DSM-IV Axis I disorder, (c) no evidence of current alcohol or substance abuse, and (d) no evidence for severe opportunistic infections. All participants were over 18 years of age and right-handed, with normal vision and hearing. Written and informed consent was obtained from all participants. The details of participants were shown in Table 1.

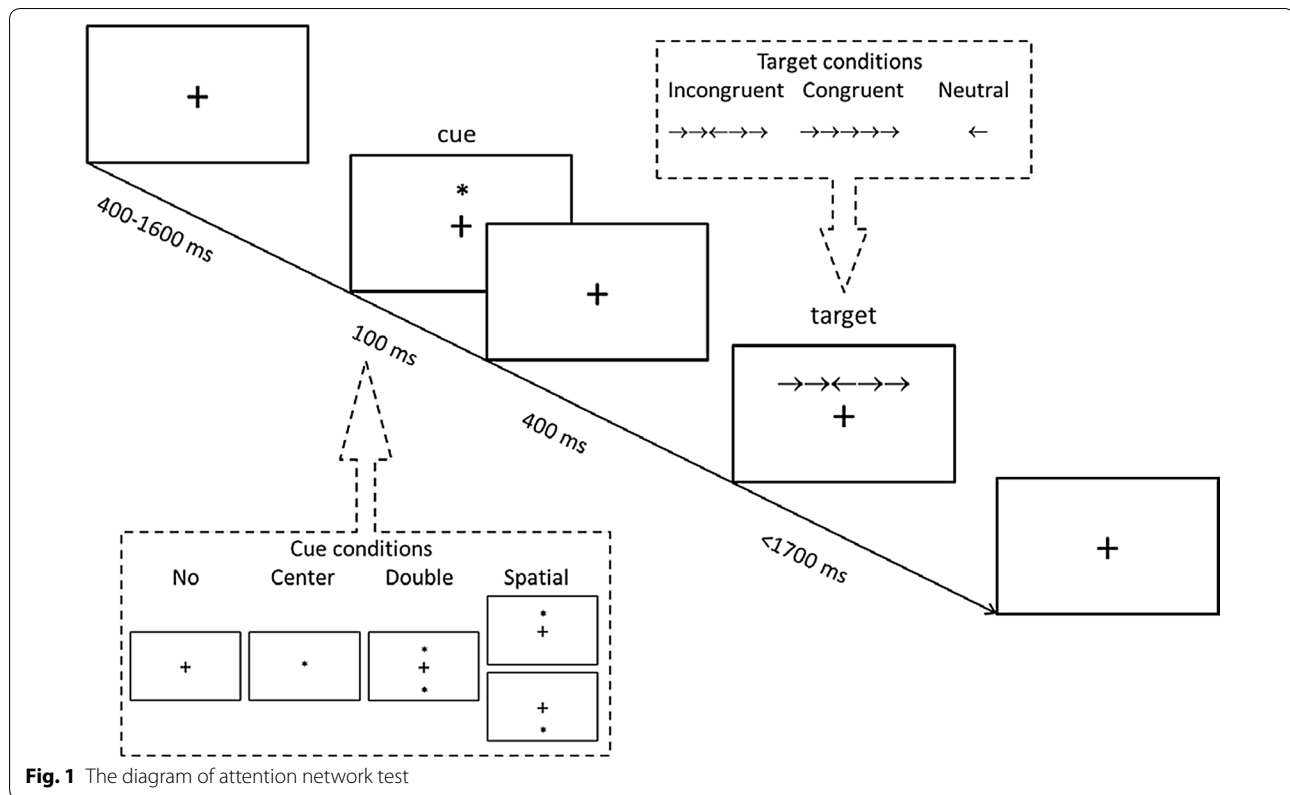
ANT

The details of ANT [20] are illustrated in Fig. 1. At the beginning of each trial, a fixation cross was presented in the center of the screen for a random variable duration (400–1600 ms). Then, a warning cue was presented for 100 ms. After a short fixation period (400 ms), the target appeared and participants were required to determine whether a central arrow point left or right. Participants were required to focus on centrally located fixation cross throughout the task, and to response by pressing the keyboard direction key as fast and accurately as possible.

There are four different cue conditions: (1) no cue, participants were shown a fixation cross which was the same

Table 1 Comparisons of demographic between groups (mean \pm SD)

	Normal controls (n = 31)	HIV-infected patients (n = 27)	Statistics
Sex ratio (M: F)	18:13	17:10	$\chi^2 = 0.145, p = 0.704$
Index age (years)	30.97 \pm 12.83 (16–60)	32.26 \pm 7.31 (21–45)	$F = 0.213, p = 0.646$
Education levels (years)	11.81 \pm 4.42 (4–17)	10.48 \pm 4.64 (4–18)	$F = 1.241, p = 0.270$



as the first fixation across; (2) center cue, in which an asterisk was presented at the central fixation across; (3) double cue, in which an asterisk was presented on above and below the fixation cross, separately and simultaneously; (4) spatial cue, in which an asterisk was presented on the target location (either above or below the central fixation point). Also, there are three target conditions: (1) neutral target, there was only one central arrow; (2) congruent target, the target (i.e., central arrow) was flanked on either side by two arrows in the same direction; (3) incongruent target, the target was flanked on either side by two arrows in the opposite direction.

Each trial lasted for 4000 ms. In total, there were one practice block and three experimental blocks. The practice block consisted of 24 trials with feedback on their speed and accuracy. Each experimental block consisted of 96 trials without feedback.

Calculation of attention network efficiencies

The manipulations of cue and target allow the calculation of response time (RT) difference assumed to represent the three attention networks. According to previous literature [21, 28], to avoid the influence of the outliers, wrong responses, RT outside a 100–1700 ms window and RT outside two standard deviations of each condition were excluded step by step. Then, medians were calculated for

each condition. Relative to no cue condition, double cues tend to alert the participants to the imminent appearance of the target in the two potential target locations. Accordingly, the alerting effect was calculated by subtracting the mean of medians under the double cue condition from the mean of medians of the no cue condition. Both spatial cues and central cues provide alerting information for the imminent appearance of the target, but only the spatial cues provide predictive spatial information about the appropriate location begin the target arrives. Thus, the orienting effect was calculated by subtracting the mean of medians under the spatial cue condition from the mean of medians under the center cue condition. Regarding target conditions, participants had to overcome the conflict elicited by the distracting flankers in the incongruent condition, whereas they did not in congruent condition. The executive effect was calculated by subtracting the mean of medians under the congruent condition from the mean of medians under the incongruent condition.

Statistics

Pearson's Chi squared test was carried out to assess the sex ratio between groups. Multivariate analysis of variance (MANOVA) was performed for index age and educational level between HIV-infected patients and normal controls.

To provide a comprehensive description of the results, we first conducted a three-way repeated analysis of variance (repeated measures ANOVA) with groups (HIV-infected patients vs. normal controls) as a between-subjects factor and cue conditions (no cue, center cue, double cue, and spatial cue), and target conditions (neutral, congruent, and incongruent) as within-subject factors, and with response time and accuracy as dependent variables. To clarify which conditions are driving the difference of three attentional network effects between HIV-infected patients and normal controls, we conducted repeated measures ANOVAs with the medians of response time as dependent variables to explore main effects of alerting cue conditions (i.e., double cue vs. no cue), orienting cue conditions (i.e., spatial cue vs. center cue), and executive target conditions (i.e., incongruent target vs. congruent target), and its interaction with groups.

Finally, to explore the possible association between a nadir CD4 T cell count and the pattern of attention network function, MANOVA with post hoc test by Bonferroni was conducted for three attentional network effects, mean RT, and overall accuracy among groups (i.e., patients with $CD4 \leq 200$, patients with $CD4 > 200$, and normal controls).

Results

Demographic data

Table 1 summarizes the demographic characteristics between the patients and controls. Analyses of Variance and Chi Squared tests revealed no significant differences in index age, education levels, and sex ratio.

Repeated measures ANOVA for RT

Table 2 summarized the performance in ANT for each group. Repeated measures ANOVA results showed a significant main effect of cue conditions (i.e., longer RT in no cue condition than others, and shorter RT in spatial condition than others) [$F(3168) = 131.757, P < 0.001$]. There was significant main effect of target conditions (i.e., longer RT in incongruent than others and shorter RT in neutral) [$F(2112) = 447.633, P < 0.001$]. No significant main effect of group was found for RT [$F(156) = 0.016, P = 0.899$].

There was a significant interaction between cue conditions and target conditions [$F(6336) = 5.848, P < 0.001$]. As Fig. 2a shows, the effect of the target conditions was enhanced when given double cues and center cues than that in no cue condition and spatial cue condition. Additionally, there was a significant interaction between cue conditions and group [$F(3168) = 3.362, P = 0.020$]. As Fig. 2b shows, participants in group of HIV-infected showed longer RT in double cue condition than normal

controls, but approximately equal RT with normal controls in no cue condition and spatial cue condition.

Repeated measures ANOVA for accuracy

Repeated measures ANOVA results showed a significant main effect of target conditions (i.e., participants made more errors in incongruent condition than others) [$F(2112) = 10.876, P < 0.001$]. The interaction between cue conditions and target conditions approached significance [$F(6336) = 2.225, P = 0.040$]. As Fig. 2c shows, the effect of cue conditions was enhanced when given incongruent target than that in others. No other significant main effects and interactions were found for accuracy.

Repeated measures ANOVA for medians of response time between normal controls and HIV-infected patients

Repeated measures ANOVA for medians of response time showed significant main effects of alerting cue conditions (i.e., longer medians in no cue than double cue) [$F(156) = 146.386, P < 0.001$], orienting cue conditions (i.e., longer medians in center cue than spatial cue) [$F(156) = 102.671, P < 0.001$], and executive target conditions (i.e., longer medians in incongruent target than congruent target) [$F(156) = 102.671, P < 0.001$] [$F(156) = 430.346, P < 0.001$].

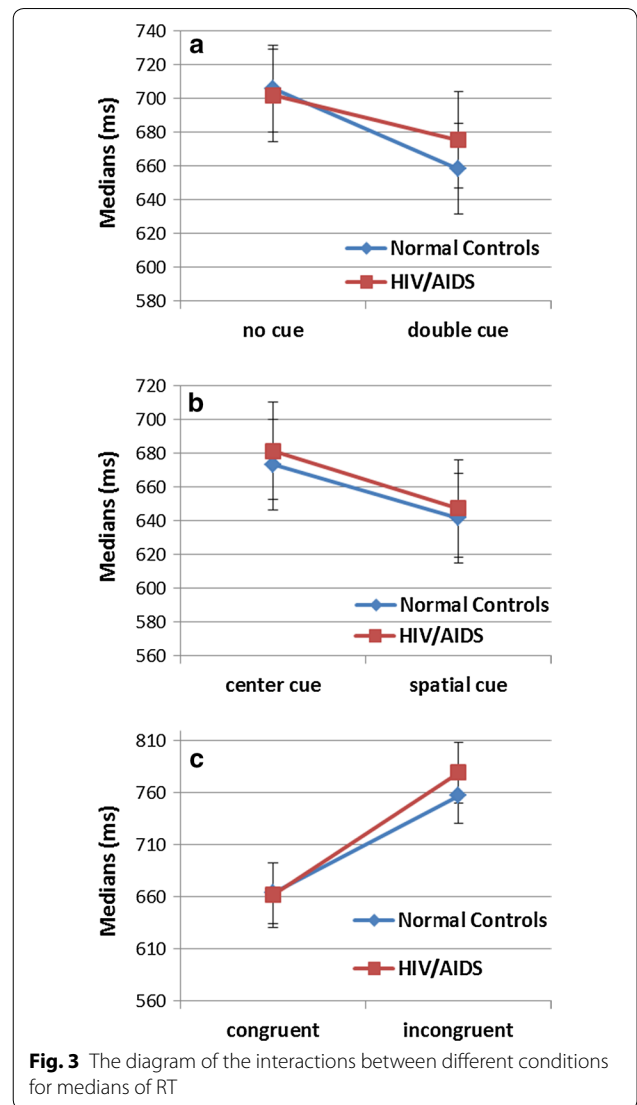
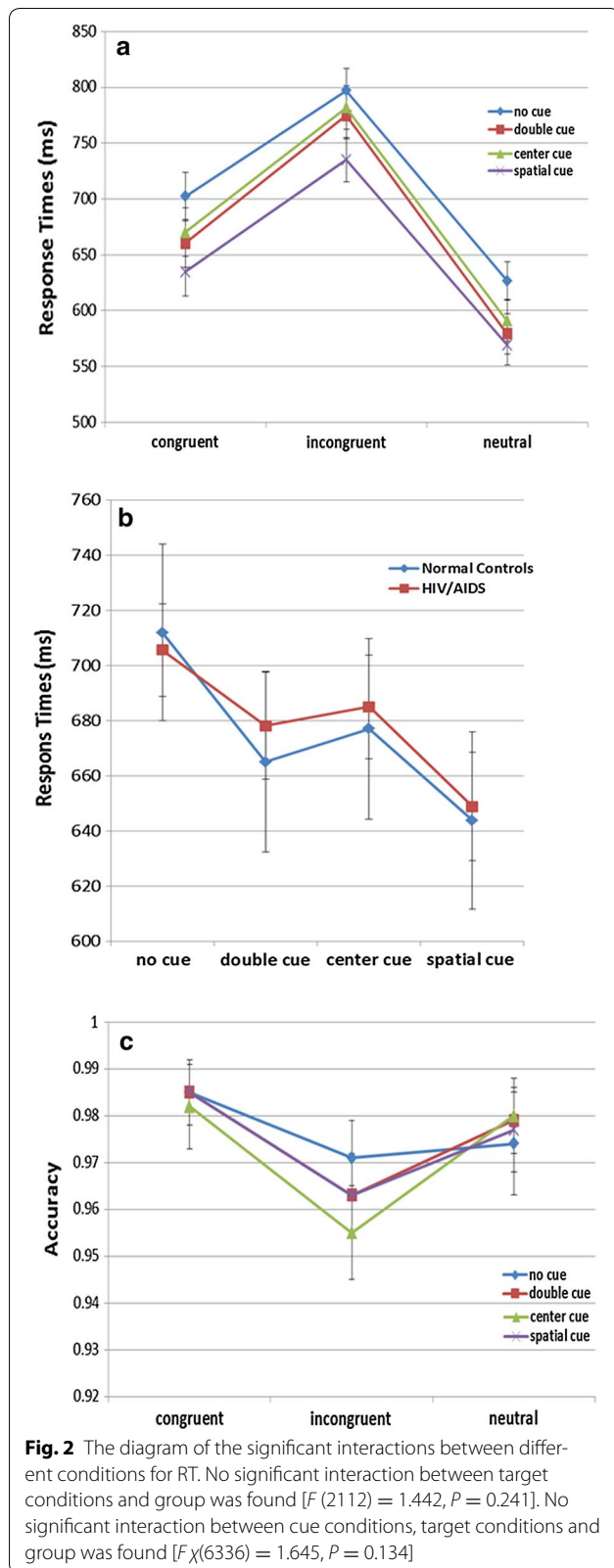
There was a significant interaction between alerting cue conditions and groups [$F(156) = 11.948, P = 0.001$]. As Fig. 3a shows, participants in group of HIV-infected showed longer medians in double cue condition than normal controls, but approximately equal medians with normal controls in no cue condition. No significant interaction was found between orienting cue conditions and groups [$F(156) = 0.143, P = 0.707$]. As Fig. 3b shows, both HIV-infected patients and normal controls showed longer medians in center cue condition than spatial cue condition. Repeated measures ANOVA also indicated a significant interaction between executive target conditions and groups [$F(156) = 5.800, P = 0.019$]. As Fig. 3c shows, participants in group of HIV-infected showed longer medians in incongruent target condition than normal controls, but approximately equal medians with normal controls in congruent target condition.

Attentional network effects among groups

Table 3 summarized three attentional network effects for each group. MANOVA results showed that there was a significant main effect of groups on alerting effect [$F(255) = 7.261, P = 0.002$] and executive effect [$F(255) = 3.208, P = 0.048$], but not on orienting effect [$F(255) = 1.348, P = 0.268$]. No significant differences were found between groups for mean RT [$F(255) = 1.236, P = 0.298$] and overall accuracy [$F(255) = 0.761, P = 0.472$].

Table 2 Mean RT and accuracy under each condition for each group

	No cue		Double cue		Center cue		Spatial cue		Mean	
	Normal controls	HIV-infected patients	Normal controls	HIV-infected patients	Normal controls	HIV-infected patients	Normal controls	HIV-infected patients	Normal controls	HIV-infected patients
Mean RT and standard deviations										
Congruent	709 (123)	695 (99)	653 (104)	668 (83)	673 (100)	668 (94)	640 (105)	630 (93)	669 (108)	666 (95)
Incongruent	792 (121)	802 (85)	768 (110)	782 (83)	773 (104)	791 (83)	723 (106)	747 (88)	764 (110)	781 (85)
Neutral	634 (118)	619 (101)	574 (89)	585 (85)	586 (101)	596 (87)	569 (93)	570 (88)	591 (100)	593 (90)
Mean	712 (121)	706 (95)	665 (101)	678 (87)	677 (101)	685 (88)	644 (101)	649 (89)	674 (106)	679 (90)
Accuracy and standard deviations										
Congruent	0.98 (0.07)	0.99 (0.04)	0.97 (0.07)	1.00 (0.02)	0.98 (0.07)	0.99 (0.06)	0.98 (0.07)	0.99 (0.03)	0.98 (0.07)	0.99 (0.04)
Incongruent	0.96 (0.08)	0.98 (0.04)	0.95 (0.08)	0.98 (0.05)	0.94 (0.09)	0.97 (0.06)	0.95 (0.08)	0.98 (0.06)	0.95 (0.08)	0.98 (0.05)
Neutral	0.97 (0.08)	0.98 (0.08)	0.97 (0.07)	0.98 (0.03)	0.98 (0.07)	0.98 (0.05)	0.97 (0.08)	0.98 (0.05)	0.97 (0.07)	0.98 (0.06)
Mean	0.97 (0.07)	0.98 (0.06)	0.97 (0.07)	0.99 (0.04)	0.96 (0.08)	0.98 (0.05)	0.97 (0.08)	0.98 (0.05)	0.97 (0.08)	0.98 (0.05)



Post-hoc tests by Bonferroni showed that the patients with $CD4 \leq 200$ exhibited less efficient alerting attention than normal controls ($P = 0.002$). The difference between the patients with $CD4 \leq 200$ and normal controls approached significance ($P = 0.062$). No other significances were found between-groups comparisons (all $P \geq 0.347$).

Discussion

Attention is the core cognitive ability to select some aspects of the world and ignore others for further processing [11, 29]. While this basic ability enables the acquisition of skills in other cognitive areas, few studies in

Table 3 Comparisons of ANT performance between groups (Mean \pm SE)

	Normal controls (n = 31)	HIV-infected patients (n = 27)		Overall	Statistics
		CD4 > 200 (n = 12)	CD4 \leq 200 (n = 15)		
Alerting effect (ms)	47.06 \pm 3.73	32.27 \pm 5.88	18.58 \pm 6.58	26.19 \pm 4.90	$F = 7.261, p = 0.002$
Orienting effect (ms)	31.35 \pm 4.02	40.40 \pm 6.25	25.42 \pm 6.99	33.74 \pm 5.16	$F = 1.348, p = 0.268$
Executive effect (ms)	92.84 \pm 4.92	111.60 \pm 9.99	124.17 \pm 11.17	117.19 \pm 9.32	$F = 3.208, p = 0.048$
Mean RT (ms)	669.19 \pm 31.97	636.87 \pm 37.35	724.42 \pm 41.75	675.78 \pm 18.90	$F = 1.236, p = 0.298$
Overall accuracy (%)	96.16 \pm 1.23	97.33 \pm 1.53	98.58 \pm 1.71	97.89 \pm 4.49	$F = 0.761, p = 0.472$

HIV-infected adults have employed measures specifically designed to assess different components of attentional ability. For its advantage of allowing for comparison of the relative deficits in different attention network [20], the attention network test (ANT) has been widely used in different neuropsychological population. In the present work, we first adopted ANT to test whether the HIV-infected patients showed a specific attention network deficit or a general attentional impairment.

Our results show that HIV-infected patients exhibited longer medians in double cue condition than normal controls, whereas made approximately equal medians with normal controls in no cue condition. This result indicate that HIV-infected patients showed less advantage from a warning cue for preparation for detecting an expected signal, and suggest that they exhibited less efficient alerting attention function. This finding is consistent with the neurotransmitter hypothesis underlying alerting attention. It is believed that the alerting attention is related to norepinephrine function [18]. Patients with HIV-infection often complained about their difficulty in maintaining a vigilant state [15, 30]. And, previous studies have reported that the norepinephrine response to a cold pressor test [31] and the sympathetic activity [32] in HIV-infected subjects was blunted. Our result also indicate HIV-infected patients showed longer medians in incongruent target condition than normal controls, while made approximately equal medians with normal controls in congruent target condition. These findings suggest that patients with HIV-infection exhibited less efficient executive attention function, and had difficulty in resolving response conflicts between competing information. This is consistent with previous neuropsychological studies in HIV-infection. Deficits in executive domain of attention control have been reported in previous studies using the trail making test [33], and the Stroop task [34]. Also, this is in agreement with the neurotransmitter hypothesis underlying executive attention. It is demonstrated that the dopamine function plays a prominent role in executive attention network [18]. And, previous studies have reported that the cerebrospinal fluid dopamine mean

values were significantly lower in HIV-infected subjects than HIV-seronegative group [35, 36]. In addition, Kumar et al. reported a strong correlation between specific HIV-1 viral load increases and dopamine reduction within the Substantia Nigra [37].

Unlike the findings of alerting attention and executive attention, our results indicate that HIV-infected patients were equally sensitive to the spatial cues with normal controls. These seem to suggest that the orienting attention function was intact in these patients. The intact orienting attention function found in HIV-infected patients is not unique. Using ANT, we have also found that an intact orienting attentional ability in patients with depression [38], untreated hyperthyroidism [39], and the breast cancer patients receiving chemotherapy treatment [40]. Previous studies have documented that cholinergic systems arising in the basal forebrain appear to play a critical role in orienting attention network [18, 41, 42]. Further research should be conducted to examine whether this cholinergic systems are not vulnerable to HIV infection.

Consistent with previous literature [43–46], our results also indicate a tendency for poorer efficiency on alerting attention and executive attention in patients with CD4 \leq 200. Although this finding was limited by small sample size, the link between lower CD4 T cell count and poorer attention network function has revealed the importance of the CD4 nadir as a marker of neurocognitive deficits. As Muñoz-Moreno et al. [46] proposed, neurocognitive functioning is likely to be more affected when more systemic immunosuppression appears. In addition, a recent study has documented those reductions in brain volumes in HIV-infected patients are strongly linked to a history of immunosuppression with lower nadir CD4 count [47]. This finding, combined with other evidences, suggests that it would be wiser to start antiretroviral therapy earlier to avoid irreversible neurocognitive impairment.

Some limitations with regard to the present study should be mentioned. For absence of day-to-day functioning scores in HIV-infected patients, it is not known

whether there is an association between everyday functioning and the three attention network effects. The lack of clinically-relevant information about HIV disease prognosis also makes it difficult to interpret these findings within the context of HIV disease. Finally, our sample size was small, which increases the risk of type II error. In sum, although limited by a small sample size, our findings suggest that HIV-infected patients exhibited selective impairments of attention network of alerting and executive control. It would be wiser to start antiretroviral therapy earlier to avoid irreversible neurocognitive impairment.

Conclusions

The use of ANT allowed us to address whether the attentional deficits in HIV-infected patients was a specific attention network deficit or a general attention deficit. Our findings indicated that HIV-infected exhibited selective impairments of attention network of alerting and executive control, whereas orienting attention was intact. Our results also indicate a tendency for poorer efficiency on alerting attention and executive attention in patients with $CD4 \leq 200$. Despite of several limitations in the present work, our results will be helpful in providing a better understanding of attentional deficits in HIV-infected patients.

Authors' contributions

YW and KW designed the study. YW drafted the manuscript. ZS, YP, SZ, and YW acquired the data. All contributed to data interpretation. All authors read and approved the final manuscript.

Author details

¹ Department of Brain Functioning Research, The Seventh Hospital of Hangzhou, 305 Tianmushan Road, Hangzhou 310013, Zhejiang, China. ² Clinical Institute of Mental Health in Hangzhou, Anhui Medical University, Hangzhou, Zhejiang, China. ³ School of Media and Design, Hangzhou Dianzi University, Hangzhou, Zhejiang, China. ⁴ The Fifth Hospital of Ruian, Ruian, Zhejiang, China. ⁵ Collaborative Innovation Center for Neuropsychiatric Disorders and Mental Health, Hefei, Anhui, China. ⁶ Department of Neurology, The First Affiliated Hospital of Anhui Medical University, Hefei, China.

Acknowledgements

The authors thank all participants, especially the HIV-infected patients.

Competing interests

The authors declare that they have no competing interests.

Availability of data and materials

The materials described in the manuscript, including all relevant raw data, will be freely available to any scientist wishing to use them for non-commercial purposes, without breaching participant confidentiality under the circumstances without conflicting to our further research.

Consent for publication

Informed consents to publish were obtained from the patients in this research.

Ethics approval and consent to participate

This study was approved by the local ethics committee of the Seventh Hospital of Hangzhou. It was conducted in accordance with the current revision of the Declaration of Helsinki.

Funding

This work was supported by the National Natural Science Foundation of China (Grant No. 81471366), the Science and Technology Bureau of HangZhou (Grant No. 20150733Q33), the Science and Technology Bureau of HangZhou (Grant No. 20170533B51), and the Science and Technology Bureau of WenZhou (2015Y0410).

Publisher's Note

Springer Nature remains neutral with regard to jurisdictional claims in published maps and institutional affiliations.

Received: 14 February 2017 Accepted: 30 May 2017

Published online: 27 June 2017

References

- Antinori A, Arendt G, Becker JT, Brew BJ, Byrd DA, Cherner M, et al. Updated research nosology for HIV-associated neurocognitive disorders. *Neurology*. 2007;69:1789–99.
- Brew BJ. AIDS dementia complex. In: Brew BJ, editor. *HIV neurology*. Oxford: Oxford University Press; 2001. p. 276.
- Price RW. Neurological complications of HIV infection. *Lancet*. 1996;348:445–52.
- Robertson KR, Smurzynski M, Parsons TD, Wu K, Bosch RJ, Wu J, Bosch RJ, Wu J, McArthur JC, Collier AC, Evans SR, Ellis RJ. The prevalence and incidence of neurocognitive impairment in the HAART era. *AIDS*. 2007;21(14):1915–21.
- Chan P, Brew BJ. HIV associated neurocognitive disorders in the modern antiviral treatment era: prevalence, characteristics, biomarkers, and effects of treatment. *Curr HIV AIDS Rep*. 2014;11:317–24.
- Heaton RK, Franklin DR, Ellis RJ, McCutchan JA, Letendre SL, Leblanc S, et al. HIV-associated neurocognitive disorders before and during the era of combination antiretroviral therapy: differences in rates, nature, and predictors. *J Neurovirol*. 2011;17:3–16.
- Cysique LA, Brew BJ. Prevalence of non-confounded HIV-associated neurocognitive impairment in the context of plasma HIV RNA suppression. *J Neurovirol*. 2011;17:176–83.
- Woods SP, Moore DJ, Weber E, Grant I. Cognitive neuropsychology of HIV-associated neurocognitive disorders. *Neuropsychol Rev*. 2009;19:152–68.
- Plessis SD, Vink M, Joska JA, Koutsilieris E, Stein DJ, Emsley R. HIV infection and the fronto-striatal system: a systematic review and meta-analysis of fMRI studies. *AIDS*. 2014;28:803–11.
- Hakkers CS, Arends JE, Barth RE, Plessis SD, Hoepelman AIM, Vink M. Review of functional MRI in HIV: effects of aging and medication. *J Neurovirol*. 2016;7:1–13.
- Chun MM, Golomb JD, Turk-Browne NB. A taxonomy of external and internal attention. *Annu Rev Psychol*. 2011;62:73–101.
- Squire RF, Noudoost B, Schafer RJ, Moore T. Prefrontal contributions to visual selective attention. *Annu Rev Neurosci*. 2013;36:451–66.
- Hardy DJ, Hinkin CH. Reaction time performance in adults with HIV/AIDS. *J Clin Exp Neuropsychol*. 2002;24:912–29.
- Levine AJ, Hardy DJ, Barclay TR, Reinhard MJ, Cole MM, Hinkin CH. Elements of attention in HIV-infected adults: evaluation of an existing model. *J Clin Exp Neuropsychol*. 2008;30:53–62.
- Butters N, Grant I, Haxby J, Judd LL, Martin A, McClelland J, et al. Assessment of AIDS-related cognitive changes: recommendations of the NIMH Workshop on Neuropsychological Assessment Approaches. *J Clin Exp Neuropsychol*. 1990;12:963–78.
- Marcotte TD, Lazzaretto D, Scott JC, Roberts E, Woods SP, Letendre S, et al. Visual attention deficits are associated with driving accidents in cognitively-impaired HIV-infected individuals. *J Clin Exp Neuropsychol*. 2006;28:13–28.
- Gorman AA, Foley JM, Ettenhofer ML, Hinkin CH, van Gorp WG. Functional consequences of HIV-associated neuropsychological impairment. *Neuropsychol Rev*. 2009;19:186–203.
- Petersen SE, Posner MI. The attention system of the human brain: 20 years after. *Annu Rev Neurosci*. 2012;35:73–89.

19. Posner MI, Petersen SE. The attention system of the human brain. *Annu Rev Neurosci*. 1990;13:25–42.
20. Fan J, McCandliss BD, Sommer T, Raz A, Posner MI. Testing the efficiency and independence of attentional networks. *J Cogn Neurosci*. 2002;14:340–7.
21. Wang K, Fan J, Dong Y, Wang CQ, Lee TM, Posner MI. Selective impairment of attentional networks of orienting and executive control in schizophrenia. *Schizophr Res*. 2005;78:235–41.
22. Han G, Klimes-Dougan B, Jepsen S, Ballard K, Nelson M, Hourii A, et al. Selective neurocognitive impairments in adolescents with major depressive disorder. *J Adolesc*. 2012;35:11–20.
23. Johnson KA, Robertson IH, Barry E, Mulligan A, Dáibhis A, Daly M, et al. Impaired conflict resolution and alerting in children with ADHD: evidence from the Attention Network Task (ANT). *J Child Psychol Psychiatry*. 2008;49:1339–47.
24. Sobin C, Kiley-Brabeck K, Daniels S, Blundell M, Anyane-Yebo K, Karayiorgou M. Networks of attention in children with the 22q11 deletion syndrome. *Dev Neuropsychol*. 2004;26:611–26.
25. Urbaneck C, Weinges-Evers N, Bellmann-Strobl J, Bock M, Dörr J, Hahn E, et al. Attention Network Test reveals alerting network dysfunction in multiple sclerosis. *Mult Scler*. 2010;16:93–9.
26. Heaton RK, Clifford DB, Franklin DR Jr, Woods SP, Ake C, Vaida F, et al. HIV-associated neurocognitive disorders persist in the era of potent antiretroviral therapy: CHARTER Study. *Neurology*. 2010;75:2087–96.
27. First MB, Spitzer RL, Gibbon ML, Williams JBW. Structured clinical interview for DSM-IV-TR Axis I disorders research version non-patient edition version 2. New York: New York State Psychiatric Institute Biometrics Research; 1995.
28. Redick TS, Engle RW. Working memory capacity and attention network test performance. *Appl Cognit Psychol*. 2006;20:713–21.
29. Dijksterhuis A, Aarts H. Goals, attention, and (un)consciousness. *Annu Rev Psychol*. 2010;61:467–90.
30. Levine AJ, Hardy DJ, Miller E, Castellon SA, Longshore D, Hinkin CH. The effect of recent stimulant use on sustained attention in HIV-infected adults. *J Clin Exp Neuropsychol*. 2006;8:29–42.
31. Kumar M, Morgan R, Szapocznik J, Eisdorfer C. Norepinephrine response in early HIV infection. *J Acquir Immune Defic Syndr*. 1991;4:782–6.
32. Sakhuja A, Goyal A, Jaryal AK, Wig N, Vajpayee M, Kumar A, et al. Heart rate variability and autonomic function tests in HIV positive individuals in India. *Clin Auton Res*. 2007;17:193–6.
33. Solomon TM, Halkitis PN. Cognitive executive functioning in relation to HIV medication adherence among gay, bisexual, and other men who have sex with men. *AIDS Behav*. 2008;12:68–77.
34. Schulte T, Mueller-Oehring EM, Rosenbloom MJ, Pfefferbaum A, Sullivan EV. Differential effect of HIV infection and alcoholism on conflict processing, attentional allocation, and perceptualload: evidence from a Stroop Match-to-Sample task. *Biol Psychiatry*. 2005;57:67–75.
35. Berger JR, Kumar M, Kumar A, Fernandez JB, Levin B. Cerebrospinal fluid dopamine in HIV-1 infection. *AIDS*. 1994;8:67–71.
36. Kumar AM, Fernandez JB, Irina B, Louis G, Mahendra K. HIV-1 Infection and Central Monoamine Neurotransmitters. *Am J Infect Dis*. 2007;3:177–83.
37. Kumar AM, Fernandez JB, Singer EJ, Commins D, Waldrop-Valverde D, Ownby RL. Human immunodeficiency virus type 1 in the central nervous system leads to decreased dopamine in different regions of postmortem human brains. *J NeuroVirol*. 2009;15:257–74.
38. Du J, Wang K, Dong Y, Fan J. Effects Of Venlafaxine For The Attention Networks Of Depression Disorder. *Acta Psychol Sin*. 2006;38:247–53.
39. Yuan L, Tian Y, Zhang F, Dai F, Luo L, Fan J, et al. Impairment of attention networks in patients with untreated hyperthyroidism. *Neurosci Lett*. 2014;574:26–30.
40. Chen X, Li J, Ren J, Hu X, Zhu C, Tian Y, et al. Selective impairment of attention networks in breast cancer patients receiving chemotherapy treatment. *Psychooncology*. 2014;23:1165–71.
41. Voytko ML, Olton DS, Richardson RT, Gorman LK, Tobin JR, Price DL. Basal forebrain lesions in monkeys disrupt attention but not learning and memory. *J Neurosci Off J Soc Neurosci*. 1994;14:167–86.
42. Mc Davidson, Marrocco RT. Local infusion of scopolamine into intraparietal cortex slows covert orienting in rhesus monkeys. *J Neurophysiol*. 2000;83:1536–49.
43. Tozzi V, Balestra P, Lorenzini P, Bellagamba R, Galgani S, Corpolongo A, et al. Prevalence and risk factors for human immunodeficiency virus-associated neurocognitive impairment, 1996 to 2002: results from an urban observational cohort. *J Neurovirol*. 2005;11:265–73.
44. Cysique LA, Maruff P, Brew BJ. Variable benefit in neuropsychological function in HIV-infected HAART-treated patients. *Neurology*. 2006;66:1447–50.
45. Valcour V, Yee P, Williams AE, Shiramizu B, Watters M, Selnes O, et al. Lowest ever CD4 lymphocyte count (CD4 nadir) as a predictor of current cognitive and neurological status in human immunodeficiency virus type 1 infection—The Hawaii Aging with HIV Cohort. *J Neurovirol*. 2006;12:387–91.
46. Muñoz-Moreno JA, Fumaz CR, Ferrer MJ, Prats A, Negro E, Garolera M, et al. Nadir CD4 cell count predicts neurocognitive impairment in HIV-infected patients. *AIDS Res Hum Retrovir*. 2008;24:1301–7.
47. Hua Xue, Boyle Christina P, Harezlak Jaroslaw, Tate David F, Yiannoutsos Constantin T, Cohen Ron, et al. Disrupted cerebral metabolite levels and lower nadir CD4+ counts are linked to brain volume deficits in 210 HIV-infected patients on stable treatment. *Neuroimage Clin*. 2013;3:132–42.

Submit your next manuscript to BioMed Central and we will help you at every step:

- We accept pre-submission inquiries
- Our selector tool helps you to find the most relevant journal
- We provide round the clock customer support
- Convenient online submission
- Thorough peer review
- Inclusion in PubMed and all major indexing services
- Maximum visibility for your research

Submit your manuscript at
www.biomedcentral.com/submit

