

RESEARCH ARTICLE

Open Access



EGFR mutation: novel prognostic factor associated with immune infiltration in lower-grade glioma; an exploratory study

Zhaonian Hao and Dongsheng Guo*

Abstract

Background: Glioma is one of the most common type of primary central nervous system tumors. EGFR mutation, a common alteration occurs in various tumors, is not brought to the forefront in understanding and treating glioma at present.

Methods: In the present study, we demonstrated an immune infiltration related pattern of EGFR mutation in lower-grade glioma. In silico analyses were performed to investigate EGFR mutation and its biological effects and clinical values. GO and GSEA process were used as enrichment analysis. Infiltration levels of specific types of immune cells were estimated at TIMER database. Clinical data of patients were obtained from TCGA and were employed for survival analyses.

Results: Here we revealed that EGFR mutation leads to an up-regulation of immune response related pathways and dismal prognosis in lower-grade glioma. Infiltration of CD4+ T cells, neutrophils, macrophages, and dendritic cells were significantly increased in EGFR-mutant cases. Infiltration of specific types of immune cells were correlated with shorter survival time. PD-L1 was elevated in EGFR-mutant cases and correlated with infiltration level of CD4+ T cells, neutrophils and dendritic cells.

Conclusion: EGFR mutation indicates increasing infiltration of specific types of immune cells and poor prognosis in lower-grade glioma. Alteration of immune microenvironment since the EGFR mutation might influence the survival of glioma. We also provided a novel evidence and indicator of PD-1 inhibitor application in glioma.

Keywords: Glioma, EGFR mutation, Immune infiltration, Immune microenvironment, PD-L1, PD-1 inhibitor

Background

Sequencing techniques have shown a huge potential on exploring the relationship between genome alterations and tumors [1]. Since the accomplishment of the Human Genome Project (HGP) and the launch of The Cancer Genome Atlas (TCGA), the accumulation of genetic knowledge on tumor is rocketing in recent decade. Pan-cancer analysis based on TCGA not merely revealed a panorama of alteration signatures of tumor-related genome, but also established the basis for comparative studies on relevant types of tumor [2].

Gliomas, the most common primary central nervous system (CNS) tumors, are classified as grade I to grade

IV on the base of criteria established by the World Health Organization (WHO) [3] and characterized by a high recurrence frequency, high mortality rate and dismal prognosis [4, 5]. Several genes, including IDH1/2, TP53, PTEN and EGFR, were confirmed significantly recurrently mutated genes in glioma [6–10]. TP53 mutation is considered to be early event during the genesis of an astrocytoma, while the amplification of EGFR and loss of function or mutation of PTEN are features of higher grade glioma [11–13]. Based on the TCGA data, the most frequently mutated genes in lower-grade glioma (WHO grade II- grade III) were IDH1 (77.25%), TP53 (48.04%), ATRX (39.22%), CIC (22.75%), TTN (17.06%), PIK3CA (8.43%) and EGFR (6.86%), and the most prevalent mutations in glioblastoma (GBM) were PTEN (34.86%), TTN (32.57%), TP53 (31.55%), EGFR

* Correspondence: guodongsheng@yahoo.com

Department of Neurosurgery Tongji Hospital, Tongji Medical College, Huazhong University of Science and Technology, Wuhan 430030, China



(26.97%), MUC16 (18.07%) and NF1 (12.98%). The difference in mutation frequency of EGFR in GBM and LGG aroused our interest.

EGFR, a member of receptor tyrosine kinase (RTKs) family, is playing a crucial role on regulating the intracellular signal pathways that affect cellular proliferation, cell survival, metabolism, invasion and metastasis etc. [14–16]. Previous studies have revealed several deletions and point mutations that were characterized by enhancing the activity of the EGFR. Among them, EGFRvIII was the most prevalent [14]. In contrast to the EGFR mutation residing in the intracellular kinase domain in lung cancer, gliomas harbor EGFR mutations in the extracellular domain, and this signature of EGFR alteration gave the explanation to the dismal effect on the treatment with Tyrosine kinase inhibitors (TKIs) such as erlotinib [17]. Further research proved that EGFRvIII mutation in glioma lead to activation of multiple RTKs, and these coactivation effects could initiate the downstream signaling cascade, resulting in erlotinib resistance [18]. Combined inhibition of multiple RTKs and immune check point inhibition thus became the potential novel strategy.

Infiltration of immune cells in tumor context is becoming one of the crucial indicator of prognosis in various cancers [19, 20], indicating the important influence of immune microenvironment on tumor prognosis. EGFR mutation was confirmed to play significant role in modifying tumor microenvironment in lung cancer. We hypothesize that EGFR mutation in glioma shares the similar characteristics in modifying immune microenvironment.

Therefore, we analyzed the RNA-sequencing data combined with clinical traits of patient from TCGA database to explore the immune related features of EGFR mutation in glioma, and a prospect on inferior overall survival in EGFR mutated gliomas was obtained.

Methods

Analysis of differentially expressed genes on EGFR-MUT LGGs vs EGFR-WT LGGs

Data of 536 Lower-Grade glioma (LGG) cases (WHO grade II-III) were downloaded from TCGA in April 2019 at <https://portal.gdc.cancer.gov/>, including clinical data files, Mutation Annotation Format (MAF) files, RNA-seq files, HT-Seq files (files with number of reads aligning to each protein-coding gene), and FPKM-UQ files (files with number of fragments aligning per kilobase of transcript per million mapped reads normalized to upper quartile) were also acquired. The flowchart of selecting EGFR-MUT LGG cases was shown in Fig. 1. An EGFR mutation were identified using the MAF files. The somatic mutation variants data were extracted from TCGA files. Further annotation to reveal the biological significance of these variants were analyzed by using Variant

Effect Predictor (VEP) at <http://ensembl.org/info/docs/tools/vep/> website. Results shown in Additional file 1: Table S1. VEP prediction were presented as variants impact level and variation types, described as blow: variants with high impact indicating frame-shift or nonsense mutations, variants with moderate impact indicating missense mutations, and variants with low impact indicating synonymous mutations [21].

29 LGG cases with EGFR mutations were identified, one with synonymous mutation was excluded. 28 identified EGFR mutation were predicted to have high or moderate impact on EGFR function. Totally 499 LGG cases were eventually enrolled in the following analysis.

Gene ontology (GO) analysis and gene set enrichment analysis (GSEA)

Differentially expressed genes of EGFR-MUT and EGFR-WT LGGs were generated using Limma package in R [22]. Enrichment analysis was performed at <http://pantherdb.org/> to identify significant biological processes and pathways. The criteria of threshold were set at: $FDR < 0.05$, $Log_2FC > 1$ or $Log_2FC < -1$ to generate gene list imported to PANTHER (version 14.1 released at April 2018) and the statistical significance was determined using Binomial test, and the Bonferroni correction was performed.

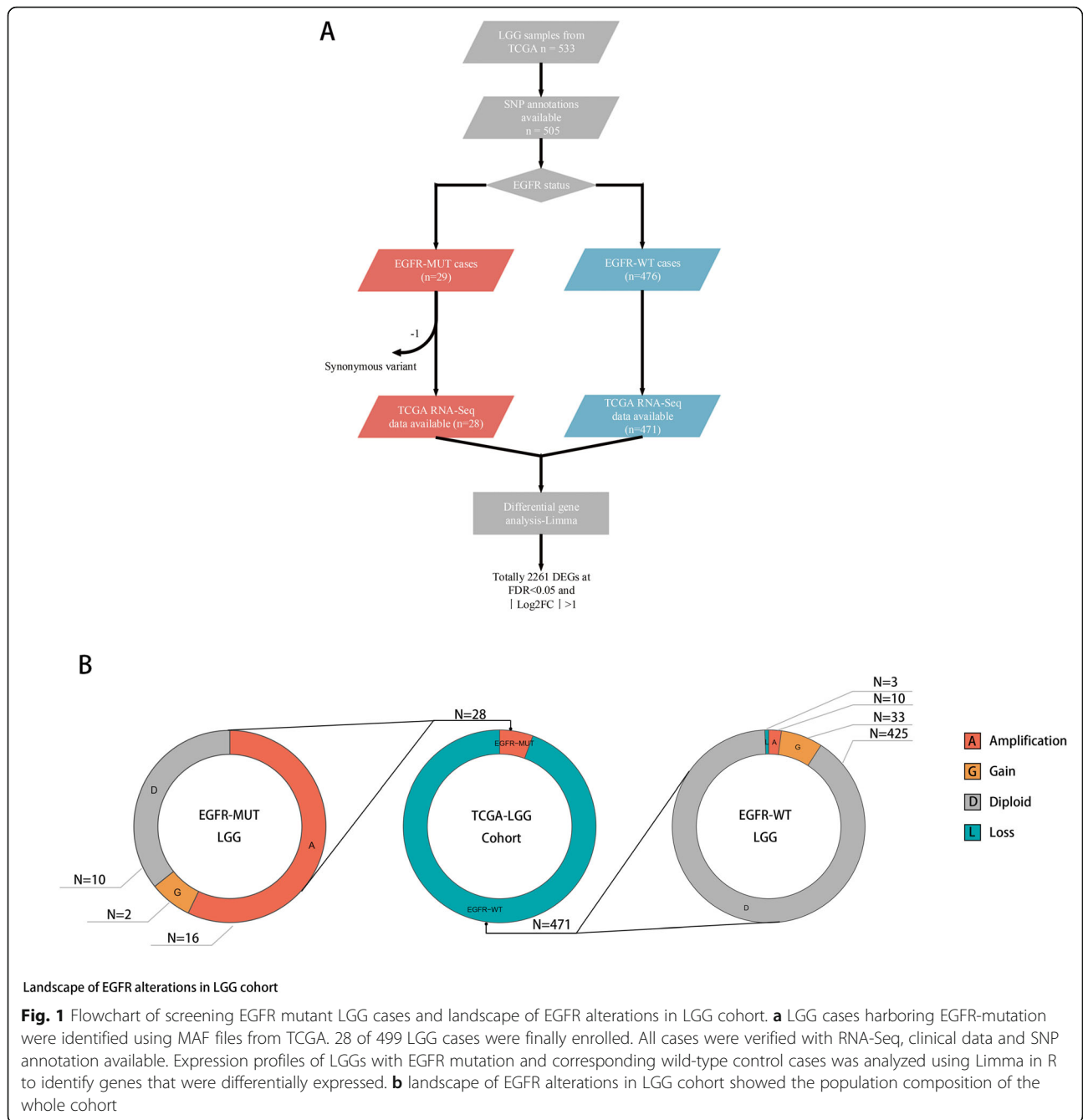
A pre-ranked GSEA analysis was performed using hallmark gene sets downloaded from Molecular Signature Database (<http://software.broadinstitute.org/gsea/msigdb>). Log_2FC values of 19,753 transcripts generated from Limma by analyzing differentially expressed genes between EGFR-MUT and EGFR-WT LGGs were enrolled to create the pre-ranked gene list. Gene sets with $FDR < 25\%$ and specifically enriched at the beginning and end of the ranked list were considered to be enrichment significance [23, 24].

Estimation of immune cells infiltration levels of EGFR-MUT and EGFR-WT cases

The infiltration levels of B cells, CD4+ T cells, CD8+ T cells, neutrophils, macrophages, and dendritic cells were obtained from Tumor Immune Estimation Resource (TIMER) at <https://cistrome.shinyapps.io/timer/> [25]. The data used to estimate infiltration levels were available at TCGA and transformed to Transcripts per million reads (TPM) format. Two-sided Wilcoxon rank test was used to determine the difference of immune cell infiltration between EGFR-MUT and EGFR-WT cases. Figures were plotted using R.

Protein–protein interaction (PPI) network analysis

The protein–protein interaction (PPI) network of the identified survival associated hub genes was constructed using the STRING (Search Tool for the Retrieval of



Interacting Genes) database at <https://string-db.org/cgi/network.pl> [26]. The PPI network was then visualized using Cytoscape software (version 3.6.0) [27].

Survival analysis

Survival analysis was performed to investigate the difference on overall survival between EGFR-MUT and EGFR-WT cases, and also between subsets of relatively higher and lower infiltration level of immune cells. We then performed survival analysis to explore the effect of genes of interested on survival, which were picked up

from the enrichment analysis of GSEA and GO. The Survival and Survminer packages were used to apply log-rank test (average values of factors were used as cut-offs) and the Kaplan-Meier curves were plotted.

COX proportional hazards models were established based on the gene sets generated from enriched pathways in EGFR-MUT or EGFR-WT cases. The COX proportional hazards test was performed in SPSS (version 19). Average values of covariates were used as cutoffs. The following log-rank test was performed using Survival and Survminer packages in R, and Kaplan-Meier curves were plotted in R.

Results

Immune response related genes are found to be up-regulated in EGFR-MUT LGGs

To explore the characteristics of EGFR mutations in lower grade glioma, we performed differential analysis of gene expression using RNA-seq data from TCGA-LGG cases with and without EGFR mutations. A total of 499 LGG cases, 471 of which had wild-type-EGFR (EGFR-WT) and 28 had mutant-EGFR (EGFR-MUT), were thus selected. And RNA-seq array data was available for all selected cases. In the TCGA cohort, the SNP frequency of EGFR is about 6.86%, and the rates of EGFR amplification and deletion in the whole cohort are 5.2% and 0.6% respectively (Fig. 1.B).

Raw data from EGFR-WT and EGFR-MUT cases, obtained from TCGA HT-seq files, were analyzed using Limma package of R for differential gene expression. 1598 genes were up-regulated in EGFR-MUT cases at $FDR < 0.05$ ($\text{Log}_2FC > 1$), while 663 genes were down-regulated in EGFR-MUT cases at the same threshold. EGFR was found to be up-regulated at a 2.3-fold ($p = 1.69E-14$) as well (Additional file 2: Table S2).

We further identified the biological processes enriched in the EGFR-MUT and EGFR-WT cases respectively, and enrichment analysis was employed among the differentially expressed genes using PANTHER. Genes involved in immune system process ($p = 1.50E-12$) and immune response ($p = 4.93E-09$) were enriched in EGFR-MUT LGGs, and simultaneously, genes participating in biological development were the top processes enriched in EGFR-MUT cases. Those genes related to nervous system development ($p = 2.26E-22$), neurogenesis ($p = 4.50E-20$) and generation of neurons ($p = 1.30E-19$) were top three processes enriched in EGFR-WT cases. Details shown in Additional file 3: Table S3.

To meticulously analyzed the enriched gene sets, sectionalized GO analysis was performed based on the grouping strategy of dividing into $\text{Log}_2FC \geq 2$ set and $2 > \text{Log}_2FC \geq 1$ set. The results showed that gene sets involved in biological development were principally enriched in the $\text{Log}_2FC \geq 2$ set. While immune response related gene sets were dominantly enriched in the $2 > \text{Log}_2FC \geq 1$ set (Fig. 2.A-B).

Gene Set Enrichment Analysis (GSEA) was also enrolled to analyze the differential expressed genes set. A pre-ranked gene list was generated based on Log_2FC values from the Limma analysis, and the list were then performed GSEA pre-ranked analysis with the hallmark gene sets used as the background. Total 31 gene sets were significantly upregulated in EGFR-MUT cases and 3 gene sets were enriched in EGFR-WT cases at $FDR < 25\%$. Several immune response related gene sets such as interferon- γ response, interferon- α response, allograft rejection, TNF α signaling via NF κ B, inflammatory

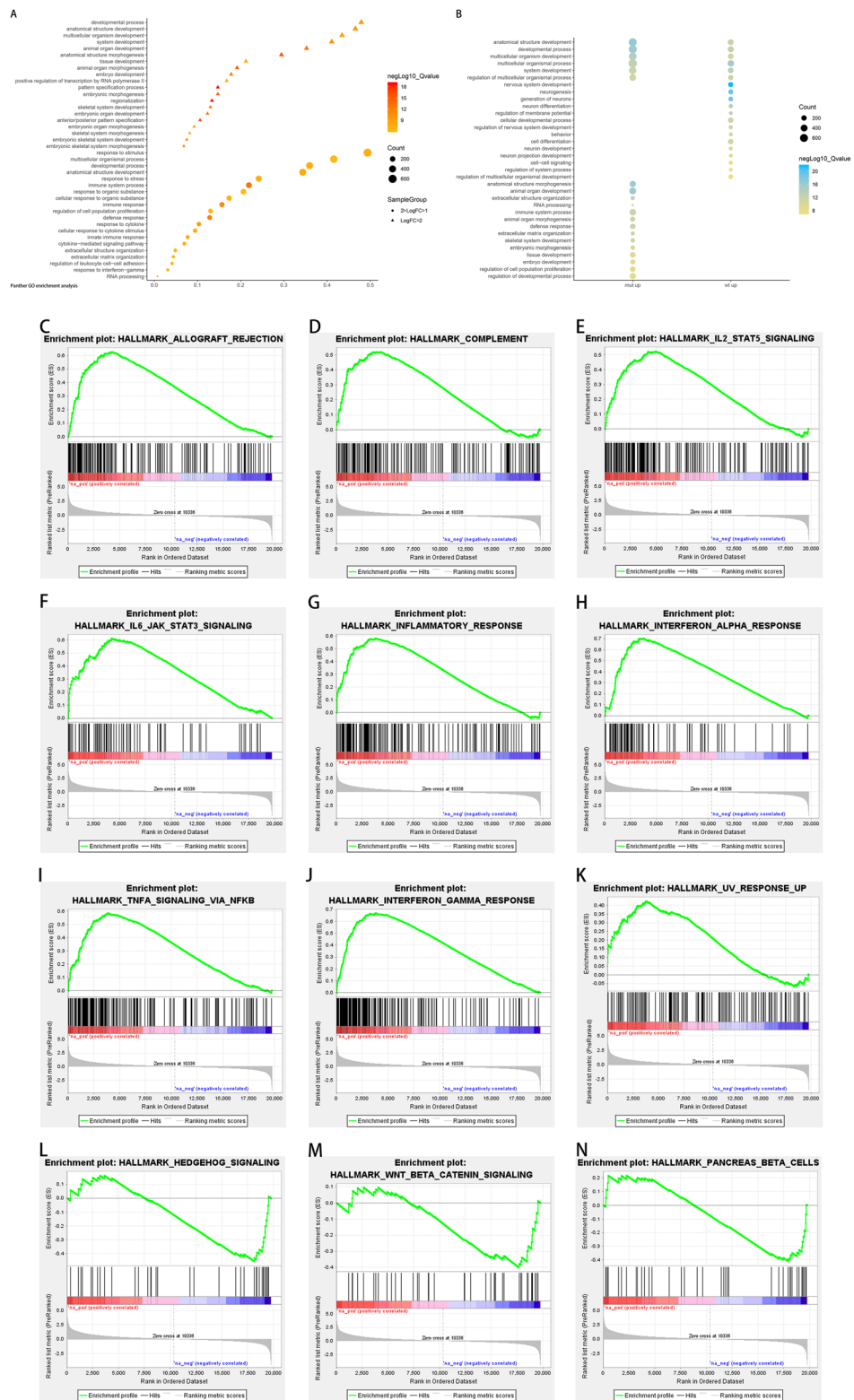
response, IL6-JAK-STAT3 signaling, IL2-STAT5 signaling, complement and UV response were significantly enriched in EGFR-MUT cases. While the gene sets significantly enriched in EGFR-WT cases were hedgehog pathway, pancreas β cell and β -catenin pathway. The results were in consonance with Gene Ontology enrichment analysis. Details were showed in Fig. 2.C-N.

Enrichment of immune response gene sets correlate with infiltration of specific immune cell types in EGFR mutant LGGs

As immune response related gene sets were characteristically enriched in EGFR-MUT cases, we investigated whether this enrichment trait was correlated with increased tumor infiltrated immune cells (TIIC). The immune cell infiltration levels were compared using data available at TIMER and Wilcoxon test between EGFR-MUT and EGFR-WT subset.

Consistent with the GO and GSEA results, the present results revealed a higher infiltration level of CD4+ T cells, neutrophils, macrophages, and dendritic cells in EGFR-MUT cases (Fig. 3.A-D). To further explore the relationship between EGFR mutation and TIIC, the infiltration levels were analyzed according to EGFR copy number variations, by using data available at TIMER. Infiltration levels of subsets of CD4+ T cells, neutrophils, macrophages, and dendritic cells were significantly increased with EGFR level amplification cases compared to diploid cases (Fig. 3.E-H). For neutrophils and macrophages subsets, infiltration levels in EGFR amplification (Copy-number > 2) cases were significantly higher than those in EGFR level-gain ($2 > \text{Copy-number} > 0$) cases. Additionally, EGFR copy-number and mRNA level were observed significantly higher in EGFR-MUT LGGs (Fig. 3.I-J). Remarkable correlation of increasing copy-number and mRNA level of EGFR was observed in those EGFR copy-number gained or lost cases (Additional file 8: Fig. S3).

On the other hand, relationships were analyzed between EGFR mutation and genes from enriched immune response pathways. To extracted genes which actively participate in the immune response changes triggered by EGFR mutation, we chose the genes that were significantly associated with clinical outcomes both in EGFR-MUT and EGFR-WT cases ($FDR < 0.05$). A total of 34 genes met this criterion (Additional file 4: Table S4). Then we unexpectedly found that PD-L1 and PD-1 were elevated in EGFR-MUT LGGs at mRNA level (Fig. 3.K-L). Protein-protein interaction (PPI) network analysis demonstrated that CD274 (PD-L1) was one of the hub genes among this dataset (Fig. 3.M). And a Pearson correlation analysis revealed that PD-L1 expression was correlated with higher TIICs infiltrations in LGGs to a certain extent (Fig. 3.N-U). A hypothesis was consequently emerged that: The increasement of both EGFR



Pre-ranked GSEA analysis

Fig. 2 Sectionalized GO analysis and GSEA enrichment. **a-b** Gene enrichment analysis was performed using tools available at PANTHER. Babble plot showed enriched processes and pathways in EGFR-MUT LGGs. **c-n** Gene Set Enrichment Analysis (GSEA) was performed using genes with FDR < 0.05 and log2FC greater or less than 1.0

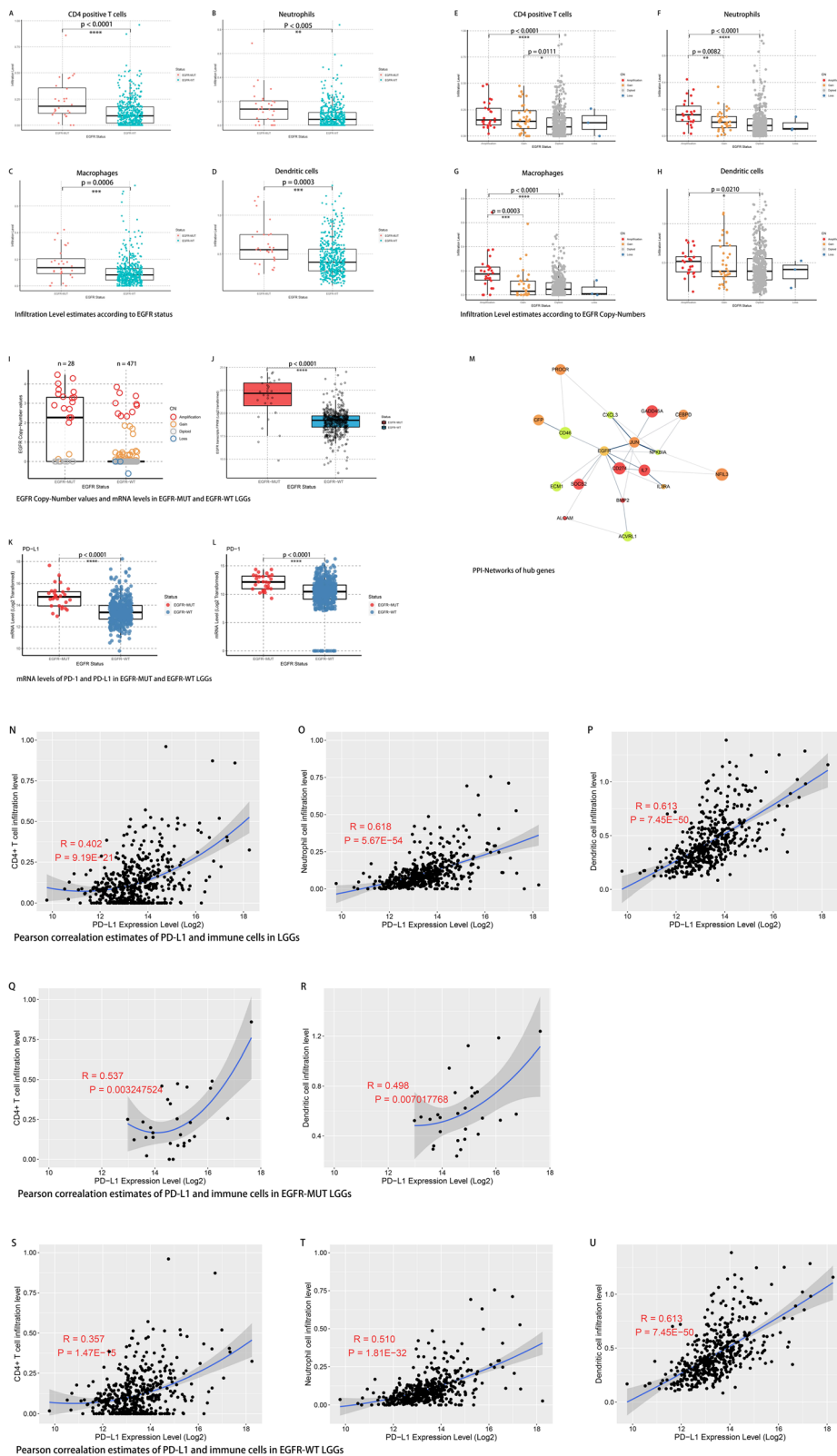


Fig. 3 (See legend on next page.)

(See figure on previous page.)

Fig. 3 Estimates of tumor infiltrating immune cells along with EGFR, PD-1 and PD-L1 alterations. **a-d** Estimates of immune cells infiltration levels according to EGFR mutation. **e-h** Estimates of immune cells infiltration levels according to EGFR copy-number alteration. **i-j** EGFR copy-number and mRNA level according to EGFR mutant LGGs. **k-l** PD-1 and PD-L1 were elevated in EGFR mutant LGGs. **m** The protein-protein interaction (PPI) network of the identified survival associated hub genes. **n-p** Pearson correlation analysis of PD-L1 and levels of tumor infiltrating immune cells in whole cohort. **q-r** Pearson correlation analysis of PD-L1 and levels of tumor infiltrating immune cells in EGFR-MUT LGGs. **s-u** Pearson correlation analysis of PD-L1 and levels of tumor infiltrating immune cells in EGFR-WT LGGs

copy number and mRNA level might cause a series of biological changes including a PD-L1 elevation and rise the TIICs level, eventually change the immune micro-environment. Similar immune signature was previously reported in EGFR mutation-positive non-small-cell lung cancer (NSCLC) [28–30], in which, elevated PD-L1 in EGFR mutant tumor was consider to be an indicator of better overall response rate to PD-1 inhibitors.

Increasing infiltration of immune cells correlates with poor overall survival

High levels of immune cell infiltration were generally considered correlated with better survival in diverse tumors. We inspected whether there was a resembling effect in the survival of LGG patients with or without EGFR mutation. Survival analysis was performed based on the grouping of EGFR mutant and infiltration levels of different types of immune cells respectively. We found a significant difference in the survival of patients with and without EGFR mutation ($p < 0.0001$), displaying an

inferior prognosis associated with EGFR mutation. And identified infiltration of CD4+ T cells, neutrophils, macrophages, and dendritic cells possess excellent biomarker potential for monitoring prognosis (Fig. 4.A-D). Therefore, we particularly investigated the effects of infiltration of immune cells on clinical outcomes in all LGG cases enrolled, as well as in EGFR-MUT and EGFR-WT respectively. In the whole cohort, higher CD4+ T cells, neutrophil cells and dendritic cells infiltration levels were correlated with worse survival outcomes. Similar conclusions were also acquired in EGFR-WT cases. As for EGFR-MUT cases, macrophage cells infiltration was observed correlated with poor prognosis (Fig. 4.E-H).

To further explore the possible explanation of correlation of EGFR mutations and dismal prognosis, we established COX proportional hazards models using genes enriched in EGFR-MUT LGGs or EGFR-WT LGGs and infiltration levels of all types of immune cells (details shown in Additional file 5: Table S5). Four genes, enriched in EGFR-MUT cases: PLSCR1, TNFAIP6,

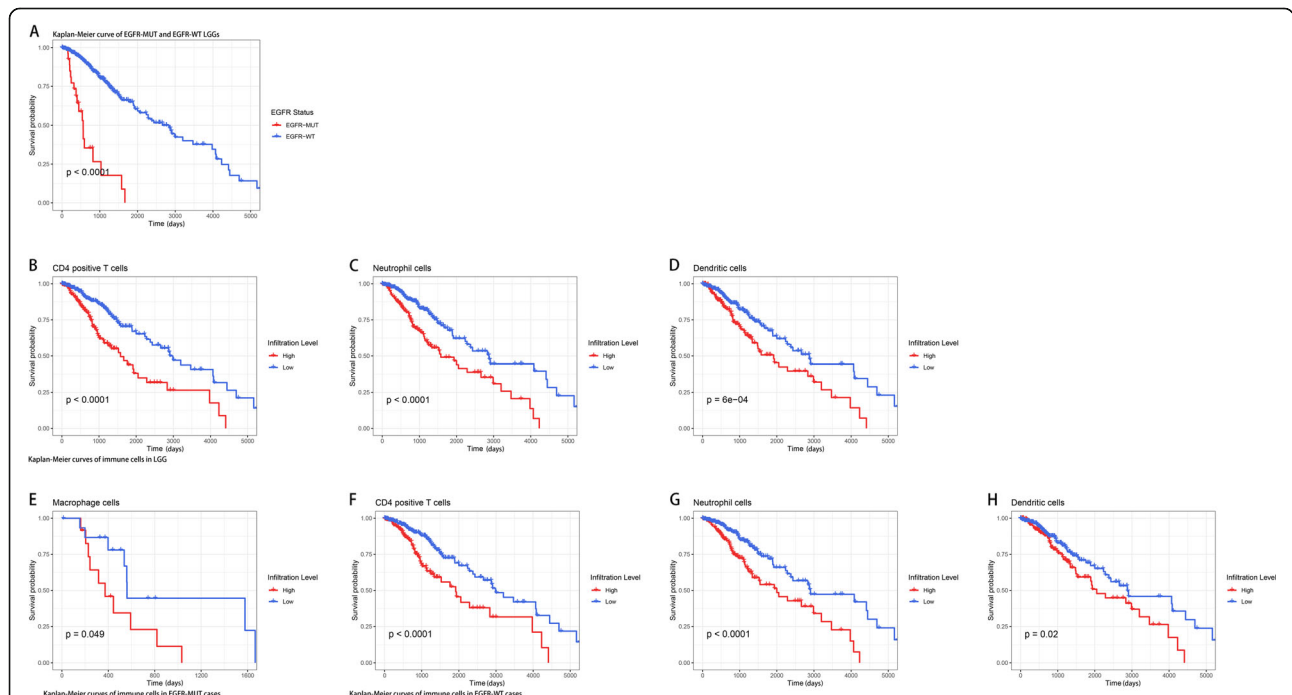


Fig. 4 Survival analysis of EGFR mutant LGGs and subsets of tumor infiltrating immune cells in LGGs. **a** EGFR mutation leads to a dismal prognosis. **b-d** Kaplan-Meier curves of CD4+ T cells, neutrophils and dendritic cells estimates in LGGs. **e** Kaplan-Meier curve of macrophages estimate in EGFR-MUT cases. **f-h** Kaplan-Meier curves of CD4+ T cells, neutrophils and dendritic cells estimates in EGFR-WT cases

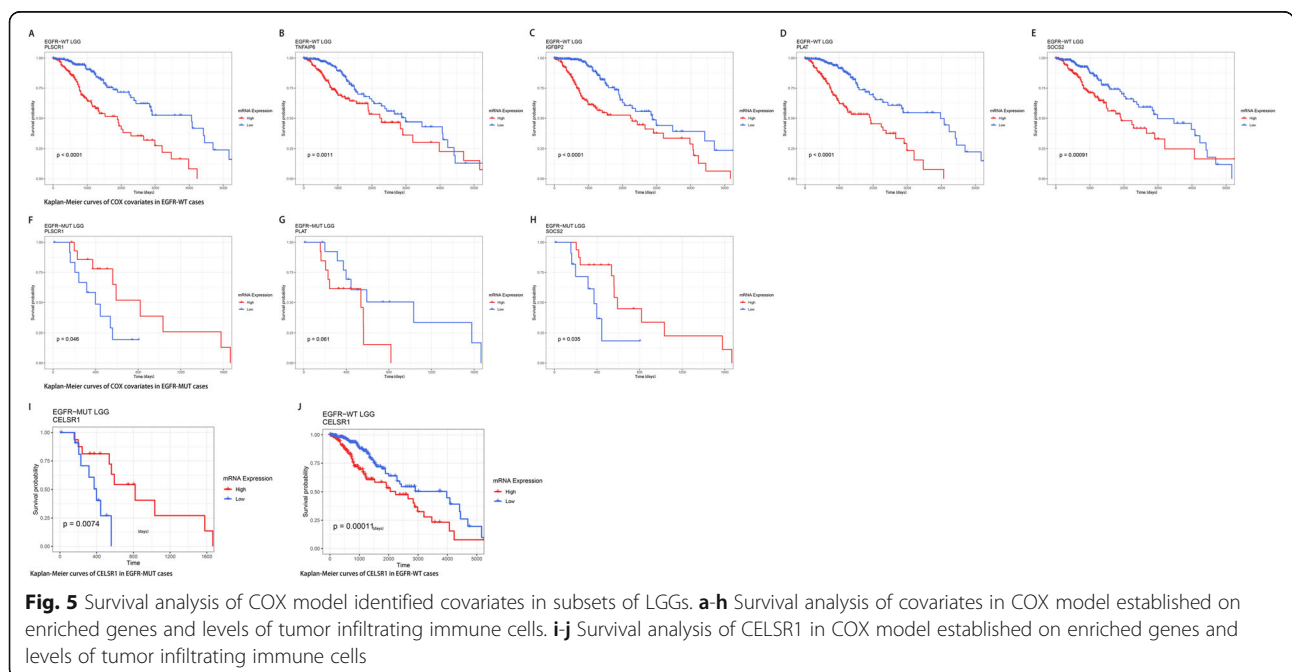
IGFBP2 and PLAT, rose the hazard ratio (HR) in EGFR-WT cases at FDR < 0.05. SOCS2 on the other hand reduced the hazard ratio in EGFR-WT LGGs with a *p* value of 0.027. PLSCR1, a regulator of cell proliferation, maturation, apoptosis and differentiation in leukemia [31]. TNFAIP6 is constitutively expressed in adult CNS and involved in astrocyte-mediated glial formation [32]. IGFBP2 was previously reported to augment the nuclear accumulation of EGFR and to potentiate STAT3 transactivation via nuclear EGFR signaling pathway in glioblastoma [33]. PLAT, also known as tissue-type plasminogen activator (tPA), is thought to regulate vascular-genesis in tumors [34, 35]. And SOCS2, identified as a STAT3 suppressor, acts in a negative feedback loop as regulators of cytokine-triggered cell signaling [36]. Afterwards, we performed log-rank test of these covariates in COX model specifically in EGFR-MUT and EGFR-WT cases. Results showed that higher expression of IGFBP2, PLSCR1 and PLAT is correlated to poor overall survival in EGFR-WT cases, and similar effects were observed in TNFAIP6 or SOCS2 high expression cases at the window of approximately 12 years. However, opposite effects were observed for EGFR-MUT cases, highly expressed SOCS2 or PLSCR1 significantly reduced the survival risks at FDR < 0.05 and associated with better outcomes (Fig. 5.A-H). CELSR1, a core gene from planar cell polarity (PCP) signaling pathway regulating development of the cerebral cortex [37], which was found enriched in EGFR-WT cases and could reduce the hazard ratio (HR = 0.632, *p* value = 0.05) significantly in EGFR-MUT cases. Log-rank test showed that increased expression of CELSR1 was associated with better OS in EGFR-MUT cases, but higher level of CELSR1 indicated worse

survival in EGFR-WT cases at the threshold of approximately 14 years (Fig. 5.I-J).

Discussion

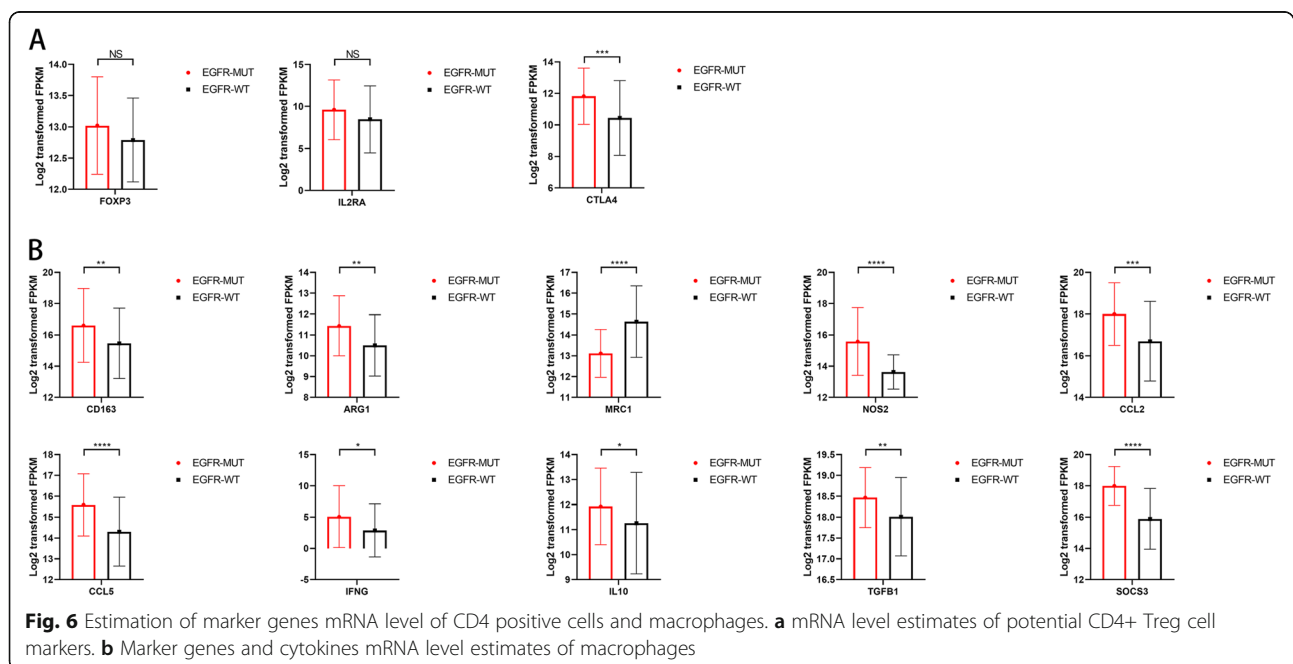
Gliomas were universally regarded as heterogeneous tumor with plentiful genetic alterations. Our study focused on the most frequently altered genes in gliomas. So far TP53 and IDH1 are the most highlighted and studied alteration in LGG, nevertheless EGFR mutation in LGG is a potential underestimated factor on monitoring glioma biological characteristics. According to TCGA data, frequency of EGFR mutation in GBM and LGG is 26.97 and 6.86% respectively. However, recent research has revealed a higher EGFR mutation frequency of 23% in LGGs, attributing to the different population of patients and deeper sequencing depth [38]. It gave us one hint that frequency of EGFR mutation might be notably underestimated, and it also might be the potential explanation of some rapid progressed lower-grade glioma (histopathological diagnosis) which might essentially be higher-grade glioma in molecular level.

EGFR-MUT LGGs were observed to harbor worse overall survival due to the characteristics of amplification of EGFR and elevated level of EGFR mRNA with higher probability, and the following initiation of cascaded downstream effects such as RTK related pathways. GSEA and layered GO analyses revealed that an enrichment of immune response-related gene sets in EGFR mutant cases. Besides, pathways such as epithelial-mesenchymal-transition (EMT), angiogenesis, hypoxia, myogenesis and cholesterol homeostasis etc. were found to more significantly enriched in EGFR-MUT LGGs,



indicating the different patterns of histopathology, tumor microenvironment (TME) and metabolism process in EGFR mutant positive and negative LGGs. To better understand of these enrichment results, we therefore enrolled immune infiltration analysis of multiple immune cells and found that CD4+ T cells, neutrophils, macrophages, and dendritic cells were increasingly infiltrated in EGFR-MUT. No significant differences of infiltrated CD8+ T cells and B cells was found between EGFR-MUT and EGFR-WT cases (Additional file 6: Fig. S1). Normally, infiltrating immune cells are considered better survival linked factor in other types of tumor like gastric cancer [39]. High level of tumor infiltrating immune cells in lower-grade glioma were observed to associated with poor clinical outcomes except for macrophages, indicating the possible different population and functions of tumor infiltrated immune cells in glioma. We further investigate the effects of certain infiltration of immune cells in particular EGFR-MUT cases and EGFR-WT cases. The results suggested that macrophages infiltration became a significant ($p = 0.049$) adverse factor of survival particularly in EGFR-MUT LGGs. As for EGFR-WT, the log-rank tests showed a consistency of preceding results that increased infiltration of CD4+ T cells, neutrophils and dendritic cells associated with worse OS. We came out at least two possible hypotheses to explain the impacts of different immune cells on survival. (a) Chronic inflammation is a hallmark of tumor [40]. Instead of acute inflammation that function as infection clearing, heal wounding or maintaining tissue homeostasis, tumor-related inflammation is always chronic and mild. Many factors trigger the inflammatory response in

tumors, and activation of oncogenes is one of the crucial factors. Oncogenes like RTKs are often persistently activated in a ligand-independent manner. Emerging literature supports a role of RTKs in inflammation induction [41]. EGFRvIII is the most prevalent ligand-independent phenotype of EGFR alterations, and might causes a tumor-promoting chronic inflammation. (b) The enriched processes in EGFR-MUT cases such as EMT, angiogenesis, myogenesis and cholesterol homeostasis gave us a hint that the TME and metabolism might have changed. First place high mutation burden combined with EMT process might lead to neoantigen genesis and change the presentation processes in TME. Tumor infiltrated immune cells including cytotoxic T lymphocytes, regulatory T cells (Treg) and B cells are quite common in TME. Among them, some are tumor lethal cells and some of them play tumor-promoting roles [41]. For instance, gamma/delta T cells can suppress T and dendritic cell functions [42], Treg cells possesses strong suppressive functions in TME [43]. Since the negative effects of infiltrated CD4+ T cells on survival outcomes, we may hypothesize that immunosuppressive T cells like Treg cells were the major population. Levels of FOXP3 and IL2RA, markers of Treg cells, were not identified express higher in EGFR-MUT samples (Fig. 6.A). However, the key immunosuppressive factor CTLA-4 was confirmed elevated in EGFR-MUT cases, which indicating a possible existence of Treg cells in lower-grade glioma context. Additionally, the prevalent existence of tumor-associated macrophages (TAMs) in gliomas contribute to tumor growth, metastasis and angiogenesis [44]. Several TAMs factors were estimates higher expressed



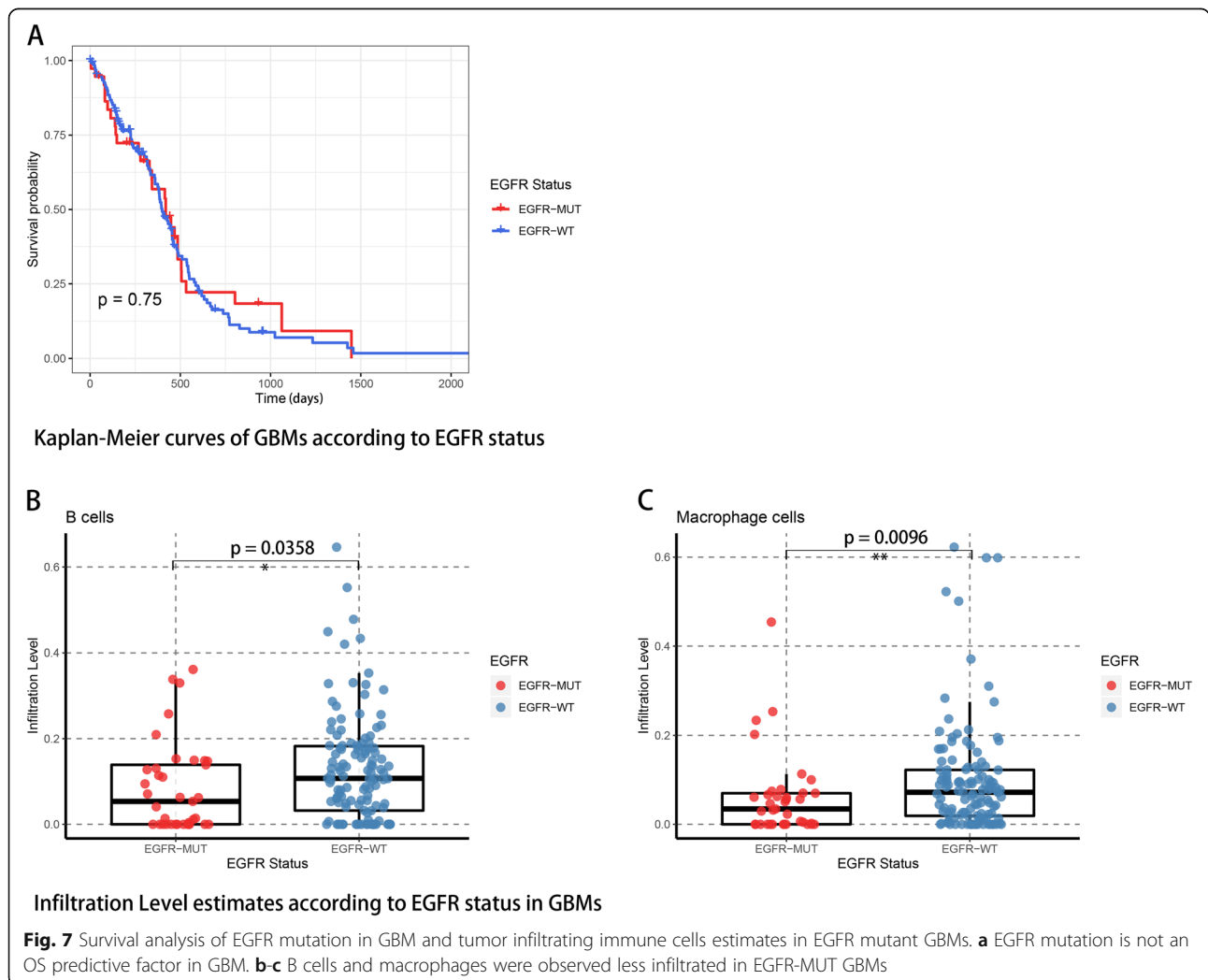
in EGFR-MUT samples (Fig. 6.B). Although the results of CD206(MRC1) and IFN-gamma might lead to the M1 phenotype of macrophage, the even higher level of cytokines like IL-10, TGF-beta, CCL2 and CCL5 and arginase 1(ARG1) in EGFR-MUT samples still be the significant patterns of TAMs, and which indicating more possibly an immunosuppressive population of macrophages. Landscape of cytokine profiling was also generated, and several chemokines that can attract immune cells were identified elevated in EGFR-MUT samples (Additional file 7: Fig. S2). Comprehensively, the alteration of EGFR in LGG might changes the TME and triggers a tumor-associated chronic inflammation, which eventually affect the functions of tumor infiltrated immune cells.

There's also one exciting clue obtained that PD-1 and PD-L1 were observed elevated in EGFR mutant LGGs and correlated with higher level of infiltrative immune cells. Unlike the strategy of targeted therapy in EGFR mutant NSCLC, neither TKIs nor immune checkpoint

inhibitors were widely used in glioma at present. But the pattern of EGFR mutation along with higher expression level of PD-L1 was identified correlate with better response rate of PD-1 inhibitor [28–30], indicating EGFR-mutation might be a novel biomarker monitoring a better outcome of PD-1 inhibitor treatment.

Nonetheless, further particular experiments are needed to identify the detail mechanisms of this pattern. Our results provide some hints for ulterior researches such as focusing on the composition of CD4+ T cells as well as macrophages infiltrated in LGGs.

On the other hand, the COX hazard tests provided puzzled models in a certain extent. One model, generated from enriched genes in EGFR-MUT cases combined with infiltration levels of immune cells, revealed that PLSCR1, TNFAIP6, IGFBP2 and PLAT acted as adverse factors in EGFR-WT cases, and SOCS2 played a protective role in the EGFR-WT cases. While the log-rank test results revealed that high levels of all these five genes, perplexingly including SOCS2, correlated to



shorter OS in wild-type cases. Contrary to universal understanding, SOCS2 expression in EGFR-WT cases was associated with worse overall survival. We therefore performed further investigation and found that SOCS2 expression was higher in EGFR mutant LGGs than that in EGFR wild-type LGGs. Since SOCS2 elevation is often considered to be the consequence of STAT3 activation and acts a negative feedback mechanism [33], SOCS2 might highly express in those STAT hyper-activated cases, of which might originally be greater malignant tumor. Interestingly, PLSCR1 and SOCS2 became protective factor on survival with some certain degree in EGFR-MUT cases, PLAT might still act as a threatening factor in EGFR-MUT cases but not significantly ($p = 0.061$). A same intricate conclusion was observed in another COX model established based on the top enriched genes in EGFR-WT cases along with immune cells infiltration estimates. The model suggested that CELSR1 was a protective factor in EGFR-MUT LGGs, and respective log-rank test was in line with the COX expectation. However, when CELSR1 performed with log-rank test in EGFR wild-type LGGs, CELSR1 unexpectedly became a detrimental factor on survival. Eventually, one fact that can't be denied is that the amount of EGFR mutated cases enrolled were not enough, which could make certain influence on survival analysis results. Enlarged scale of researches were necessary to further confirmed the validities of these varying prognosis indicators in LGG.

Another hallmark for Lower grade glioma is the high rate of recurrence and progression to glioblastoma. We thus performed the similar analysis in this study on GBM, nevertheless, the results didn't meet our expects. GBM samples were included using the same standard as those cases in LGG, and eventually 160 samples were enrolled within 35 EGFR mutated cases. According to TCGA data, EGFR mutated GBMs showed no significant difference on survival times (Fig. 7). Wilcoxon rank test comparing infiltration levels of immune cells revealed that B cells ($p = 0.0358$) and macrophages ($p = 0.0096$) were less infiltrated in EGFR-MUT GBMs. Disappointingly, the amount of differentially expressed genes were not satisfactory and not able to perform further enrichment analysis. So far, numerous further experimental corroborations were necessary to fully understand the different impacts of EGFR mutation signature on GBM and LGG.

Conclusions

We described a novel hallmark of EGFR mutation in Lower grade gliomas (WHO grade II-III), and established a connection between noted tumor-related gene phenotype, tumor immune microenvironment and clinical prognosis in LGG. From another point of view, we provide a new scenario on explaining that EGFR

mutated LGG cases always harboring worse prognosis, and raise a new potential marker of indicating the prognosis and immune microenvironment status. We also provide a novel indicator of PD-1 inhibitor treatment in glioma, which possesses considerable potential on clinical application.

Supplementary information

Supplementary information accompanies this paper at <https://doi.org/10.1186/s12885-019-6384-8>.

Additional file 1: Table S1. VEP prediction. The Variant Effect Predictor (VEP) outcomes of predictions on biological significance of EGFR variants. (CSV 70 kb)

Additional file 2: Table S2. Limma analysis of DEGs. The outcomes of analysis of identifying differential expressed genes using Limma package of R. (CSV 195 kb)

Additional file 3: Table S3. GO results. The results of Gene Ontology terms. (CSV 23 kb)

Additional file 4: Table S4. PPI hub genes. The identified hub genes and the outputs of Log-rank tests. (CSV 166 kb)

Additional file 5: Table S5. The COX model. The original parameters and output of COX model established by SPSS version 19. (CSV 2 kb)

Additional file 6: Figure S1. Infiltration of CD8+ T cells and B cells. Infiltration estimates of CD8+ T cells and B cells in EGFR-MUT and EGFR-WT cases, no significant differences were found.

Additional file 7: Figure S2. Cytokine Profiling heat maps. Chemokines, lymphokines and phenotype markers of macrophages estimations of EGFR-MUT and EGFR-WT cases were revealed using heat maps.

Additional file 8: Figure S3. Demonstration of EGFR mRNA level according to copy-number variation. A remarkable positive correlation was found that variation of EGFR mRNA level is synchronous to copy-number variation.

Abbreviations

CNS : Central nervous system; HGP : Human Genome Project; LGG : Lower-Grade glioma; MAF : Mutation Annotation Format; RTK : Receptor tyrosine kinase; TCGA : The Cancer Genome Atlas; TKI : Tyrosine kinase inhibitor; WHO : World Health Organization; FPKM-UQ: Fragments aligning per kilobase of transcript per million mapped reads normalized to upper quartile; VEP : Variant Effect Predictor; GO : Gene ontology; GSEA : Gene Set Enrichment Analysis; TIMER : Tumor Immune Estimation Resource; TPM : Transcripts per million reads; PPI : Protein-protein interaction; STRING : Search Tool for the Retrieval of Interacting Genes; EGFR-WT : Wild-type-EGFR; EGFR-MUT: Mutant-EGFR; TIIC : Tumor infiltrated immune cells; NSCLC : Non-small-cell lung cancer; HR : Hazard ratio; tPA : Tissue-type plasminogen activator; PCP : Planar cell polarity; EMT : Epithelial-mesenchymal-transition; TME : Tumor microenvironment; Treg : Regulatory T cells; TAMs : Tumor-associated macrophages

Acknowledgements

Not applicable.

Authors' contributions

ZNH contributed to the drafting of the manuscript, conception, processing of the data and statistical analysis. DSG contributed to the drafting, conception, analysis and interpretation, supervision, funding and guidance. Both authors hve read and approved of this manuscript and contributed corresponding works to it.

Funding

This work was supported by the National Natural Science Foundation of China [grant numbers 81472364, 81671154, 81874086]. The funder had no role in designing the study, in collection, analysis, and interpretation of data, or in writing the manuscript.

Availability of data and materials

Raw data of LGG cohort was acquired from TCGA portal (<https://portal.gdc.cancer.gov/>). Analyzed data is available within supplementary files or from the first author upon reasonable request.

Ethics approval and consent to participate

Original data was acquired from public databases and was approval-free to use.

Consent for publication

Not applicable.

Competing interests

Authors declare that there're no competing interests.

Received: 4 September 2019 Accepted: 20 November 2019

Published online: 04 December 2019

References

- Bailey MH, Tokheim C, Porta-Pardo E, Sengupta S, Bertrand D, Weerasinghe A, et al. Comprehensive characterization of cancer driver genes and mutations. *Cell*. 2018;173(2):371–85.e18. <https://doi.org/10.1016/j.cell.2018.02.060>.
- Weinstein JN, Collisson EA, Mills GB, Shaw KR, Ozenberger BA, Ellrott K, et al. The cancer genome atlas pan-cancer analysis project. *Nat Genet*. 2013;45(10):1113–20. <https://doi.org/10.1038/ng.2764>.
- Louis DN, Perry A, Reifenberger G, von Deimling A, Figarella-Branger D, Cavenee WK, et al. The 2016 World Health Organization classification of tumors of the central nervous system: a summary. *Acta Neuropathol*. 2016;131(6):803–20. <https://doi.org/10.1007/s00401-016-1545-1>.
- Ostrom QT, Gittleman H, Liao P, Vecchione-Koval T, Wolinsky Y, Kruchko C, et al. CBTRUS Statistical Report: Primary brain and other central nervous system tumors diagnosed in the United States in 2010–2014. *Neuro Oncol*. 2017;19(suppl_5):v1–v88. <https://doi.org/10.1093/neuonc/nox158>.
- Wen PY, Reardon DA. Neuro-oncology in 2015: progress in glioma diagnosis, classification and treatment. *Nat Rev Neurol*. 2016;12(2):69–70. <https://doi.org/10.1038/nrneurol.2015.242>.
- Comprehensive genomic characterization defines human glioblastoma genes and core pathways. *Nature*. 2008;455(7216):1061–8. <https://doi.org/10.1038/nature07385>.
- Li J, Yen C, Liaw D, Podyspanina K, Bose S, Wang SJ, et al. PTEN, a putative protein tyrosine phosphatase gene mutated in human brain, breast, and prostate cancer. *Science*. 1997;275(5308):1943–7. <https://doi.org/10.1126/science.275.5308.1943>.
- Nigro JM, Baker SJ, Preisinger AC, Jessup JM, Hostetter R, Cleary K, et al. Mutations in the p53 gene occur in diverse human tumour types. *Nature*. 1989;342(6250):705–8. <https://doi.org/10.1038/342705a0>.
- Wong AJ, Bigner SH, Bigner DD, Kinzler KW, Hamilton SR, Vogelstein B. Increased expression of the epidermal growth factor receptor gene in malignant gliomas is invariably associated with gene amplification. *Proc Natl Acad Sci U S A*. 1987;84(19):6899–903. <https://doi.org/10.1073/pnas.84.19.6899>.
- Yan H, Parsons DW, Jin G, McLendon R, Rasheed BA, Yuan W, et al. IDH1 and IDH2 mutations in gliomas. *N Engl J Med*. 2009;360(8):765–73. <https://doi.org/10.1056/NEJMoa0808710>.
- Ohgaki H, Kleihues P. Genetic pathways to primary and secondary glioblastoma. *Am J Pathol*. 2007;170(5):1445–53. <https://doi.org/10.2353/ajpath.2007.070011>.
- Furnari FB, Fenton T, Bachoo RM, Mukasa A, Stommel JM, Stegh A, et al. Malignant astrocytic glioma: genetics, biology, and paths to treatment. *Genes Dev*. 2007;21(21):2683–710. <https://doi.org/10.1101/gad.1596707>.
- Weber RG, Sabel M, Reifenberger J, Sommer C, Oberstrass J, Reifenberger G, et al. Characterization of genomic alterations associated with glioma progression by comparative genomic hybridization. *Oncogene*. 1996;13(5):983–94.
- Gschwind A, Fischer OM, Ullrich A. The discovery of receptor tyrosine kinases: targets for cancer therapy. *Nat Rev Cancer*. 2004;4(5):361–70. <https://doi.org/10.1038/nrc1360>.
- Lemmon MA, Schlessinger J, Ferguson KM. The EGFR family: not so prototypical receptor tyrosine kinases. *Cold Spring Harb Perspect Biol*. 2014;6(4):a020768. <https://doi.org/10.1101/cshperspect.a020768>.
- Ciardiello F, Tortora G. EGFR antagonists in cancer treatment. *N Engl J Med*. 2008;358(11):1160–74. <https://doi.org/10.1056/NEJMra0707704>.
- Vivanco I, Robins HI, Rohle D, Campos C, Grommes C, Nghiemphu PL, et al. Differential sensitivity of glioma- versus lung cancer-specific EGFR mutations to EGFR kinase inhibitors. *Cancer Discov*. 2012;2(5):458–71. <https://doi.org/10.1158/2159-8290.cd-11-0284>.
- Guo G, Gong K, Ali S, Ali N, Shallwani S, Hatanpaa KJ, et al. A TNF-JNK-Axl-ERK signaling axis mediates primary resistance to EGFR inhibition in glioblastoma. *Nat Neurosci*. 2017;20(8):1074–84. <https://doi.org/10.1038/nn.4584>.
- Jiang T, Shi J, Dong Z, Hou L, Zhao C, Li X, et al. Genomic landscape and its correlations with tumor mutational burden, PD-L1 expression, and immune cells infiltration in Chinese lung squamous cell carcinoma. *J Hematol Oncol*. 2019;12(1):75. <https://doi.org/10.1186/s13045-019-0762-1>.
- Ferrata M, Schad A, Zimmer S, Musholt TJ, Bahr K, Kuenzel J, et al. PD-L1 expression and immune cell infiltration in Gastroenteropancreatic (GEP) and non-GEP neuroendocrine neoplasms with high proliferative activity. *Front Oncol*. 2019;9:343. <https://doi.org/10.3389/fonc.2019.00343>.
- McLaren W, Gil L, Hunt SE, Riat HS, Ritchie GR, Thormann A, et al. The Ensembl variant effect predictor. *Genome Biol*. 2016;17(1):122. <https://doi.org/10.1186/s13059-016-0974-4>.
- Ritchie ME, Phipson B, Wu D, Hu Y, Law CW, Shi W, et al. Limma powers differential expression analyses for RNA-seq and microarray studies. *Nucleic Acids Res*. 2015;43(7):e47. <https://doi.org/10.1093/nar/gkv007>.
- Subramanian A, Tamayo P, Mootha VK, Mukherjee S, Ebert BL, Gillette MA, et al. Gene set enrichment analysis: a knowledge-based approach for interpreting genome-wide expression profiles. *Proc Natl Acad Sci U S A*. 2005;102(43):15545–50. <https://doi.org/10.1073/pnas.0506580102>.
- Mootha VK, Lindgren CM, Eriksson KF, Subramanian A, Sihag S, Lehar J, et al. PGC-1 α -responsive genes involved in oxidative phosphorylation are coordinately downregulated in human diabetes. *Nat Genet*. 2003;34(3):267–73. <https://doi.org/10.1038/ng1180>.
- Li T, Fan J, Wang B, Traugh N, Chen Q, Liu JS, et al. TIMER: a web server for comprehensive analysis of tumor-infiltrating immune cells. *Cancer Res*. 2017;77(21):e108–e10. <https://doi.org/10.1158/0008-5472.can-17-0307>.
- Szklarczyk D, Morris JH, Cook H, Kuhn M, Wyder S, Simonovic M, et al. The STRING database in 2017: quality-controlled protein-protein association networks, made broadly accessible. *Nucleic Acids Res*. 2017;45(D1):D362–d8. <https://doi.org/10.1093/nar/gkw937>.
- Shannon P, Markiel A, Ozier O, Baliga NS, Wang JT, Ramage D, et al. Cytoscape: a software environment for integrated models of biomolecular interaction networks. *Genome Res*. 2003;13(11):2498–504. <https://doi.org/10.1101/gr.1239303>.
- Haratani K, Hayashi H, Tanaka T, Kaneda H, Togashi Y, Sakai K, et al. Tumor immune microenvironment and nivolumab efficacy in EGFR mutation-positive non-small-cell lung cancer based on T790M status after disease progression during EGFR-TKI treatment. *Ann Oncol*. 2017;28(7):1532–9. <https://doi.org/10.1093/annonc/mdx183>.
- Soo RA, Kim HR, Asuncion BR, Fazreen Z, Omar MFM, Herrera MC, et al. Significance of immune checkpoint proteins in EGFR-mutant non-small cell lung cancer. *Lung Cancer*. 2017;105:17–22. <https://doi.org/10.1016/j.jlungcan.2017.01.008>.
- Lin C, Chen X, Li M, Liu J, Qi X, Yang W, et al. Programmed death-ligand 1 expression predicts tyrosine kinase inhibitor response and better prognosis in a cohort of patients with epidermal growth factor receptor mutation-positive lung adenocarcinoma. *Clin Lung Cancer*. 2015;16(5):e25–35. <https://doi.org/10.1016/j.clcc.2015.02.002>.
- Zhao KW, Li X, Zhao Q, Huang Y, Li D, Peng ZG, et al. Protein kinase C δ mediates retinoic acid and phorbol myristate acetate-induced phospholipid scramblase 1 gene expression: its role in leukemic cell differentiation. *Blood*. 2004;104(12):3731–8. <https://doi.org/10.1182/blood-2004-04-1630>.
- Coulson-Thomas VJ, Lauer ME, Soleman S, Zhao C, Hascall VC, Day AJ, et al. Tumor necrosis factor-stimulated Gene-6 (TSG-6) is constitutively expressed in adult central nervous system (CNS) and associated with astrocyte-mediated glial scar formation following spinal cord injury. *J Biol Chem*. 2016;291(38):19939–52. <https://doi.org/10.1074/jbc.M115.710673>.
- Chua CY, Liu Y, Granberg KJ, Hu L, Haapasalo H, Annala MJ, et al. IGFBP2 potentiates nuclear EGFR-STAT3 signaling. *Oncogene*. 2016;35(6):738–47. <https://doi.org/10.1038/onc.2015.131>.
- Solly F, Fish R, Simard B, Bolle N, Kruihof E, Polack B, et al. Tissue-type plasminogen activator has antiangiogenic properties without effect on

- tumor growth in a rat C6 glioma model. *Cancer Gene Ther.* 2008;15(10):685–92. <https://doi.org/10.1038/cgt.2008.36>.
35. Lin CY, Cho CF, Bai ST, Liu JP, Kuo TT, Wang LJ, et al. ADAM9 promotes lung cancer progression through vascular remodeling by VEGFA, ANGPT2, and PLAT. *Sci Rep.* 2017;7(1):15108. <https://doi.org/10.1038/s41598-017-15159-1>.
 36. Naka T, Narazaki M, Hirata M, Matsumoto T, Minamoto S, Aono A, et al. Structure and function of a new STAT-induced STAT inhibitor. *Nature.* 1997;387(6636):924–9. <https://doi.org/10.1038/43219>.
 37. Boucherie C, Boutin C, Jossin Y, Schakman O, Goffinet AM, Ris L, et al. Neural progenitor fate decision defects, cortical hypoplasia and behavioral impairment in *Celsr1*-deficient mice. *Mol Psychiatry.* 2018;23(3):723–34. <https://doi.org/10.1038/mp.2017.236>.
 38. Zheng S, Alfaro-Munoz K, Wei W, Wang X, Wang F, Eterovic AK, et al. Prospective clinical sequencing of adult Glioma. *Mol Cancer Ther.* 2019;18(5):991–1000. <https://doi.org/10.1158/1535-7163.mct-18-1122>.
 39. Zhang H, Liu H, Shen Z, Lin C, Wang X, Qin J, et al. Tumor-infiltrating neutrophils is prognostic and predictive for postoperative adjuvant chemotherapy benefit in patients with gastric cancer. *Ann Surg.* 2018;267(2):311–8. <https://doi.org/10.1097/sla.0000000000002058>.
 40. Hanahan D, Weinberg RA. Hallmarks of cancer: the next generation. *Cell.* 2011;144(5):646–74. <https://doi.org/10.1016/j.cell.2011.02.013>.
 41. Yang L, Lin PC. Mechanisms that drive inflammatory tumor microenvironment, tumor heterogeneity, and metastatic progression. *Semin Cancer Biol.* 2017;47:185–95. <https://doi.org/10.1016/j.semcancer.2017.08.001>.
 42. Peng G, Wang HY, Peng W, Kiniwa Y, Seo KH, Wang RF. Tumor-infiltrating gammadelta T cells suppress T and dendritic cell function via mechanisms controlled by a unique toll-like receptor signaling pathway. *Immunity.* 2007;27(2):334–48. <https://doi.org/10.1016/j.immuni.2007.05.020>.
 43. Nishikawa H, Sakaguchi S. Regulatory T cells in cancer immunotherapy. *Curr Opin Immunol.* 2014;27:1–7. <https://doi.org/10.1016/j.coi.2013.12.005>.
 44. Zhu C, Kros JM, Cheng C, Mustafa D. The contribution of tumor-associated macrophages in glioma neo-angiogenesis and implications for anti-angiogenic strategies. *Neuro Oncol.* 2017;19(11):1435–46. <https://doi.org/10.1093/neuonc/nox081>.

Publisher's Note

Springer Nature remains neutral with regard to jurisdictional claims in published maps and institutional affiliations.

Ready to submit your research? Choose BMC and benefit from:

- fast, convenient online submission
- thorough peer review by experienced researchers in your field
- rapid publication on acceptance
- support for research data, including large and complex data types
- gold Open Access which fosters wider collaboration and increased citations
- maximum visibility for your research: over 100M website views per year

At BMC, research is always in progress.

Learn more biomedcentral.com/submissions

