


RESEARCH ARTICLE

Open Access



Pyramidal system involvement in progressive supranuclear palsy – a clinicopathological correlation

Zuzana Stejskalova^{1,2,3†}, Zdenek Rohan^{1,2*†} , Robert Rusina^{4,5}, Adam Tesar⁴, Jaromir Kukal⁶, Gabor G. Kovacs⁷, Ales Bartos^{8,9} and Radoslav Matej^{1,2,3,4}

Abstract

Background: We aimed to produce a detailed neuropathological analysis of pyramidal motor system pathology and provide its clinical pathological correlation in cases with definite progressive supranuclear palsy (PSP).

Methods: Pyramidal motor system pathologies were analyzed in 18 cases with neuropathologically confirmed PSP. Based on a retrospective clinical analysis, cases were subtyped according to Movement Disorder Society criteria for clinical diagnosis of PSP as probable, possible or suggestive of PSP with Richardson's syndrome ($n = 10$), PSP with predominant corticobasal syndrome ($n = 3$), PSP with predominant parkinsonism ($n = 3$), PSP with predominant speech/language disorder ($n = 1$), and PSP with progressive gait freezing ($n = 1$). Clinical manifestations of motor neuron involvement (pseudobulbar or bulbar signs and spasticity) were retrospectively assessed semiquantitatively. Neuropathologically, hyperphosphorylated tau-related pyramidal motor system neuronal, neuritic, and glial pathology using anti-tau AT8 clone immunohistochemistry, was also evaluated.

Results: Clinical manifestations of pyramidal motor system involvement were found in patients with different PSP subtypes. A statistically significant higher load of tau pathology was found in the pyramidal system in PSP-Richardson's syndrome compared to other PSP subtypes ($p = 0.016$); however, there was no significant correlation between pyramidal system tau pathology and related motor clinical symptoms.

Conclusions: Tau pathology in the spinal cord and pyramidal motor system structures is very common in progressive supranuclear palsy and may neuropathologically supplement the distinction between classic Richardson's syndrome from other progressive supranuclear palsy subtypes.

Keywords: Progressive supranuclear palsy, Atypical parkinsonism, Tauopathies, Spinal cord

Background

Progressive supranuclear palsy (PSP) is a four-repeat tau predominant (4R-) tauopathy that belongs to the group of frontotemporal lobar degenerations with tau pathology (FTLD-tau) [1].

PSP is the second most common form of parkinsonism after Parkinson's disease and the third most common

geriatric neurodegenerative disorder. PSP prevalence is 18 cases per 100,000 with a median survival from onset to death of approximately 8 years [2, 3].

Typical clinical findings include vertical gaze palsy, gait disturbance, postural instability, frequent falls, akinesia, and symmetric rigidity. Recently, updated diagnostic criteria have been published that clearly describe different clinical PSP presentations [1].

The form with the greatest number of "classic" clinical hallmarks, corresponding to the initial description of PSP by Richardson, Steele, and Olszewski, is now named Richardson's syndrome (PSP-RS) [4, 5]. Other PSP variants have different clinical presentations, such as initial PSP with predominant parkinsonism (PSP-P: asymmetric

* Correspondence: zdenekrohan@hotmail.com

Zuzana Stejskalova and Zdenek Rohan contributed equally to the article.

¹Department of Pathology and Molecular Medicine Third Faculty of Medicine, Charles University and Thomayer Hospital, Videnska 800, 14059 Prague 4 – Krc, Czech Republic

²Department of Pathology, First Faculty of Medicine, Charles University and General University Hospital, Prague, Czech Republic

Full list of author information is available at the end of the article



dopa-unresponsive parkinsonism with late dementia and falls); PSP with progressive gait freezing (PSP-PGF); PSP with predominant corticobasal syndrome (PSP-CBS: asymmetric dystonia with parkinsonism, limb apraxia, cortical sensory loss, and alien limb); PSP with predominant speech/language disorder (PSP-SL: overlaps the nonfluent/agrammatical variant of progressive aphasia or speech apraxia with parkinsonism); PSP with predominant ocular motor dysfunction (PSP-OM); PSP with postural instability (PSP-PI); PSP with early frontal lobe cognitive or behavioral presentations (PSP-F: including the behavioral variant of frontotemporal dementia with parkinsonism), and very rare forms involving primary lateral sclerosis (PSP-PLS) and cerebellar ataxia (PSP-C) [1].

Involvement of the motor system in PSP thus includes dysfunction at several levels including control of movement by the basal ganglia, brainstem nuclei, and the cerebellum, with appropriate clinical manifestations; upper and lower motor neuron symptomatology is, however, not currently considered to be the dominant clinical feature in the clinical presentation of PSP.

PSP is neuropathologically defined as a 4R-tauopathy with 4R-tau-immunoreactive neuronal, oligodendroglial and astroglial cytoplasmic inclusions, and neurofibrillary threads accompanied by neuronal loss and isomorphic gliosis in the basal ganglia, subthalamic nucleus, substantia nigra, brainstem, cerebellum, and cerebral cortex [6]. Several reports have shown that the spinal cord or the corticospinal tract may be involved in PSP cases [7–15]; however, this is still a rather underappreciated aspect of PSP pathology.

Therefore, in this study, we focused on tau pathology in the spinal cord, corticospinal tract, and primary motor cortex in 18 neuropathologically confirmed PSP cases that presented clinically as either Richardson's syndrome or as atypical PSP. The aim of our study was (1) to evaluate the extent of tau pathology in the spinal cord and pyramidal motor system in PSP cases and (2) to examine whether the extent of tau pathology in the pyramidal motor system was linked to clinical symptoms of PSP and its subdivision into PSP-RS and PSP-nonRS subtypes.

Methods

Cases involved in the study and tissue samples

Written informed consent to participate in the study was obtained from all study participants and/or their next-of-kin/legal guardians. The study protocol was approved by the Multicenter Ethics Committee of the Institute of Clinical and Experimental Medicine and Thomayer Hospital in Prague, Czech Republic (approval nr. G1827).

Brain samples from 18 diseased patients (13 males and 5 females) with definite PSP and without neurodegenerative comorbidity nor serious cerebrovascular pathology were considered for the study.

Their medical records were assessed retrospectively. Basic demographical data are summarized in Table 1 and the Additional file 1: Table S1. All patients underwent a medical autopsy with the subsequent brain and spinal cord autopsy using a standardized protocol involving 3–4 weeks of fixation in 10% neutral buffered formalin. In 4 cases, tissue samples from muscles in the antebraichial and crural regions were also available.

Clinical assessment

Data from five clinical centers were included in the study. Medical records of patients with definite PSP were retrospectively analyzed and evaluated by two neurologists (RR, AT). Clinical data are summarized in form of short clinical vignettes as part of the Additional file 2.

First, we analyzed all available data (based on major clinical manifestations at disease onset as well as disease evolution) and assigned, retrospectively, an appropriate PSP subtype to all 18 patients.

Second, we assessed in more detail all available upper and lower motor neuron signs and symptoms. To allow statistical analysis and comparison to neuropathological findings, we created a semiquantitative assessment of pyramidal signs and symptoms (Table 2) in three categories: pseudobulbar signs, bulbar signs, and spasticity.

Bulbar signs were rated as 0 – absent, 1 – manifest (paralytic dysarthria, severe dysphonia, dysphagia, and/or a weak cough and susceptibility to aspiration).

Pseudobulbar signs were rated as 0 – absent, 1 – manifest (spastic dysarthria, labile emotions and/or unprovoked outbursts of laughing or crying, or the previous manifestations together with frontal gait apraxia).

Spasticity signs were rated as follows: 0 – absent, 1 – manifest (evident hyperreflexia with Babinski sign, and/or a marked increase in muscle tone).

Immunohistochemistry and histochemistry

Paraffin-embedded tissue sections (4 µm) from different regions (Table 2) were examined using routine hematoxylin-eosin and luxol-eosin stains. Immunohistochemistry was performed using antibodies against hyperphosphorylated tau protein (clone AT8, 1:500, Thermo Scientific), 4R-tau isoform (RD4, clone 1E1/AG, 1:200, Upstate), 3R-tau isoform (RD3, clone 8E6/C11, 1:500, Upstate), p62 (clone GP62, 1:4000, PROGEN), and ubiquitin (polyclonal, 1:500, Dako) with low-pH citrate buffer epitope retrieval. Moreover, antibodies against amyloid-beta (clone 6F/3D, 1:100, Dako), alpha-synuclein (4D6, 1:10000, Signet), and phospho-TDP-43 (clone 11/9, 1:4000, CosmoBio), were used in the context of a differential diagnostic workup. Subsequent visualization of all antibodies was performed using a horseradish peroxidase-diaminobenzidine system (Envision FLEX/HRP, polyclonal rabbit-anti-guinea pig; Dako).

Table 1 Basic clinical data of analyzed cases

	n	Gender (M/F)	Age at onset	Duration from disease onset (years)
PSP-RS	10	7/3	62 (51–70)	5.8 (3–9)
PSP-nonRS	8	6/2	70 (60–83)	6 (2–12)
PSP-CBS	3	2/1	66 (60–76)	6 (2–12)
PSP-P	3	2/1	68 (66–70)	6.7 (5–7)
PSP-PGF	1	1/0	83	4
PSP-SL	1	1/0	77	6
Total	18	13/5	69 (58–83)	5.9 (2–12)

Values (when applicable) are shown as the mean (min–max); PSP subtypes according to the 2017 MDS PSP Criteria (Höglinger et al.)

Semiquantitative assessment of tau pathology

All morphometric scoring was performed independently by two neuropathologists (ZS, ZR). Analyzed areas in all PSP cases ($n = 18$) included the primary motor cortex, frontal cortex, internal capsule, basal ganglia (striatum), cerebral peduncles, pons base, cerebellum (area of the dentate nucleus). Spinal cord (anterior and posterior horn and lateral corticospinal tract), and the anterior and posterior spinal nerves (posterior fascicles and radices) were also evaluated (see Table 2).

We defined PSP-related AT8-tau immunoreactive (AT8-ir) structures as AT8-ir globose and neurofibrillary tangles (NFT)-like inclusions (NCIs), oligodendroglial coiled-body-type cytoplasmic inclusions (GCIs), astroglial cytoplasmic inclusions (tufted astrocytes; TAs), and neuropil AT8-ir threads and dots (NTs). Semi-quantification of AT8-tau pathology was assessed as absent (0), mild (1), moderate (2), and severe (3) (Fig. 1).

None of the cases included in the study showed motor neuron disease/amyotrophic lateral sclerosis-associated pathology in the spinal cord or motor cortex including significant neuronal loss and Bunina bodies in the spinal cord anterior horn motor neurons, demyelination of the lateral and anterior corticospinal tracts or phosphorylated TDP-43 or p62- and ubiquitin-related associated inclusion pathology. Other types of neuronal, glial, and neuropil pathology were recorded separately, mainly as concomitant Alzheimer disease, Lewy body disease, or neuronal and neuropil tau pathology in the form of primary age-related tauopathy (PART), or as astroglial tau pathology that presented as recently described age-related tau astroglipathy (ARTAG) [16]. None of the cases met the morphologic criteria for globular glial tauopathy (GGT) [17].

Statistical methods

The statistical analysis focused on specific brain and spinal cord areas (domains) defined neuropathologically (motor cortex, capsula interna, crura cerebri, pons, anterior spinal horns, posterior spinal horns, lateral corticospinal tract, posterior fascicles) and their neurodegenerative changes.

Using the two-sample two-sided Wilcoxon-Mann-Whitney (WMW) rank-sum test on groups of PSP-RS and PSP-nonRS patients, we verified the H0 hypothesis (PSP-RS versus PSP-nonRS patients) regarding the equality of score medians at a critical level of $p = 0.05$.

We tested both individual domain score sums and the total domain score. The same WMW test at $p = 0.05$ was used to score clinical pyramidal syndrome in PSP-RS vs. PSP-nonRS patients.

The relationship between neuropathological scores and clinical pyramidal signs was tested using the Spearman's test (level of significance $p = 0.05$).

Results

Clinical scoring and AT8-tau pathology of all 18 analyzed cases (including those not statistically evaluated) are summarized in Table 2.

Clinical manifestation

The principal clinical findings are reported in detail as clinical vignettes provided as Additional file 2: Text.

The most frequent PSP subtype, Richardson's syndrome, was present in 10 patients. Eight cases had visible bulbar and pseudobulbar manifestations and 6 had spasticity signs.

In the PSP-nonRS group, bulbar and pseudobulbar syndromes were found in one PSP-CBS, and one PSP-P. Spasticity manifestation included two PSP-CBS, one PSP-P, and one PSP-SL patient (Table 2).

In analyzing clinical scores of the patients, we found no significant difference between the RS and non-RS subgroups relative to their local clinical scores.

Spinal cord and motor cortex AT8-tau pathology were present in the majority of PSP cases

All 18 cases had at least one segment of the spinal cord (cervical or lumbar) available for evaluation. In these cases, AT8-tau pathology, from a mild (1) to a severe (3) degree, affected the spinal gray matter in the anterior horns as well as the primary motor cortex (M1) (Table 2), which clearly showed involvement of the upper as well as lower motor

Table 2 Clinical and AT8-tau pathology scoring for specific brain and spinal cord areas (domains). PSP progressive supranuclear palsy; PSP-RS PSP-Richardson syndrome; PSP-CBS PSP-corticobasal syndrome; PSP-P PSP-parkinsonism; PSP-PGF PSP pure akinesia with progressive gait freezing; PSP-SL PSP speech/language disorder; NCI neuronal cytoplasmic inclusions; NP nuclei pontis; GCI oligodendroglial cytoplasmic inclusions; ACI astroglial cytoplasmic inclusions; NT neuropil threads and dots; ANT anterior spinal nerve root; AH spinal cord anterior horn; LCS: lateral corticospinal tract; PH spinal cord posterior horn; PF posterior fascicles

PSP subtype		PSP-RS										PSP-CBS			PSP-P		PSP-PGF	PSP-SL		
Case number		1	2	3	4	5	6	7	8	9	10	11	12	13	14	15	16	17	19	
Motor cortex	NCI	■	■	■	■	■	■	■	■	■	■	■	■	■	■	■	■	■	■	
	GCI	■	■	■	■	■	■	■	■	■	■	■	■	■	■	■	■	■	■	
	ACI	■	■	■	■	■	■	■	■	■	■	■	■	■	■	■	■	■	■	
	NT	■	■	■	■	■	■	■	■	■	■	■	■	■	■	■	■	■	■	
Capsula interna	GCI	■	■	■	■	■	■	■	■	■	■	■	■	■	■	■	■	■	■	
	ACI	■	■	■	■	■	■	■	■	■	■	■	■	■	■	■	■	■	■	
	NT	■	■	■	■	■	■	■	■	■	■	■	■	■	■	■	■	■	■	
Crura cerebri	GCI	■	■	■	■	■	■	■	■	■	■	■	■	■	■	■	■	■	■	
	ACI	■	■	■	■	■	■	■	■	■	■	■	■	■	■	■	■	■	■	
	NT	■	■	■	■	■	■	■	■	■	■	■	■	■	■	■	■	■	■	
Pons (base)	NCI (NP)	■	■	■	■	■	■	■	■	■	■	■	■	■	■	■	■	■	■	
	GCI	■	■	■	■	■	■	■	■	■	■	■	■	■	■	■	■	■	■	
	ACI	■	■	■	■	■	■	■	■	■	■	■	■	■	■	■	■	■	■	
	NT	■	■	■	■	■	■	■	■	■	■	■	■	■	■	■	■	■	■	
Spinal cord	AH	NCI	■	■	■	■	■	■	■	■	■	■	■	■	■	■	■	■	■	
		GCI	■	■	■	■	■	■	■	■	■	■	■	■	■	■	■	■	■	
		ACI	■	■	■	■	■	■	■	■	■	■	■	■	■	■	■	■	■	■
		NT	■	■	■	■	■	■	■	■	■	■	■	■	■	■	■	■	■	■
	PH	NCI	■	■	■	■	■	■	■	■	■	■	■	■	■	■	■	■	■	
		GCI	■	■	■	■	■	■	■	■	■	■	■	■	■	■	■	■	■	
		ACI	■	■	■	■	■	■	■	■	■	■	■	■	■	■	■	■	■	■
		NT	■	■	■	■	■	■	■	■	■	■	■	■	■	■	■	■	■	■
	LCS	GCI	■	■	■	■	■	■	■	■	■	■	■	■	■	■	■	■	■	
		NT	■	■	■	■	■	■	■	■	■	■	■	■	■	■	■	■	■	
	PF	GCI	■	■	■	■	■	■	■	■	■	■	■	■	■	■	■	■	■	
		NT	■	■	■	■	■	■	■	■	■	■	■	■	■	■	■	■	■	
Frontal cortex	NCI	■	■	■	■	■	■	■	■	■	■	■	■	■	■	■	■	■		
	GCI	■	■	■	■	■	■	■	■	■	■	■	■	■	■	■	■	■		
	ACI	■	■	■	■	■	■	■	■	■	■	■	■	■	■	■	■	■		
	NT	■	■	■	■	■	■	■	■	■	■	■	■	■	■	■	■	■		
Clinical upper and lower motor neuron signs	pseudobulbar signs	■	■	■	■	■	■	■	■	■	■	■	■	■	■	■	■	■		
	bulbar signs	■	■	■	■	■	■	■	■	■	■	■	■	■	■	■	■	■		
	spasticity	■	■	■	■	■	■	■	■	■	■	■	■	■	■	■	■	■		

Colours indicate the load of respective tau pathology: black = severe (3); dark grey = moderate (2); light grey = mild (1); white = absent (0). Colours in the clinical rows indicate presence or absence of given signs: black = present (1); white = absent (0); x = data not available

neuron systems. The morphological spectrum of spinal cord AT8-ir structures mainly included NTs and, to a lesser extent, AT8-ir GCIs and NCIs in the anterior horns. AT8-ir GCIs and NTs were visible in the lateral corticospinal tracts in 17 cases, and in 5 cases we observed rare AT8-ir in the posterior fascicles. Astrocytic AT8-ir structures in the anterior horn, in the form of TAs, were only observed in one case. Moreover, in 7 cases we found AT8-ir NTs in the anterior roots of spinal nerves and 6 cases had AT8-ir threads

in the posterior roots. In all cases, the 4R-tau isoform dominated, as visualized using the RD4 antibody (Fig. 1). Routine luxol-eosin staining did not show significant degeneration of corticospinal tracts.

No p62- or AT8-ir inclusions were found in samples from skeletal muscles, which included peripheral nerve branches as well as striated muscle tissue.

In the primary motor cortex, AT8-ir, 4R-tau predominant TAs, GCIs, NCIs, and NTs were present in the

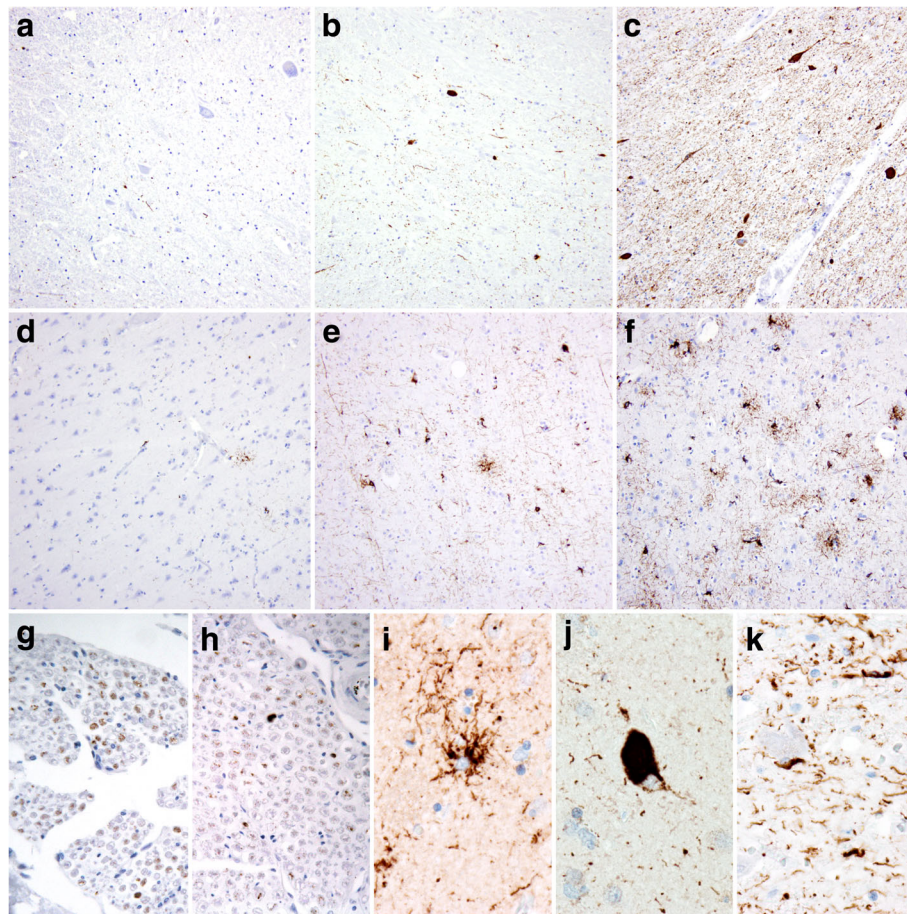


Fig. 1 Examples of neuropathological changes in the examined PSP cases. Spinal cord (**a–c**) and primary motor cortex (**d–f**) tau (AT8 antibody) scoring: **a, d** + (mild); **b, e** ++ (moderate); **c, f** +++ (severe); **g, h** tau-AT8-immunoreactivity in the anterior roots of a spinal nerve; 4R-tau (RD4 antibody)-immunoreactive tufted astrocyte (**i**), globose neurofibrillary tangle; **j** and oligodendroglial coiled inclusions; **k** with neuropil threads and dots in the background. Magnification **a–f** 200x; **g–k** 400x

gray matter and at the cortico-subcortical interface. Moreover, adjacent parts of the primary sensory cortex showed a lower tau pathology load than did the primary motor cortex (M1). Tau pathology in the superior frontal gyrus was more variable and did not consistently correspond to the tau pathology seen in M1 (Table 2).

Load of AT8-related tau pathology in the motor system distinguishes PSP-RS from non-RS

Applying the WMW test to the total neuropathological score of the motor cortex, internal capsule, midbrain, anterior horn, posterior horn, lateral corticospinal, and posterior fascicles, we observed a statistically significant difference between RS (median = 36, mean = 34.8, min = 25, max = 43) and non-RS (median = 22, mean = 23.4, min = 6, max = 45) groups with a p -value = 0.016.

There were no statistically significant differences between PSP-RS and non-RS patients in any of the previously mentioned individual brain areas.

AT8-tau pathology was variably present at all examined levels of the corticospinal tract

Even though significantly higher in PSP-RS than PSP-nonRS cases, AT8-tau pathology was detectable in all cases in the corticospinal tract including the internal capsule, cerebral peduncles, and pontine fibers, mainly in the form of AT8-ir NTs and AT8-ir GCIs (Table 2).

In PSP-RS cases, the AT8-related tau pathology load of M1 was in line with the scoring of tau pathology by Williams et al. [18]. In non-RS subtypes, M1 was inconsistently affected, with the lowest amount of AT8-tau pathology in PSP-P and PSP-PGF cases (Table 2).

Discussion

We present a systematic clinical and neuropathological analysis of the pyramidal motor system and spinal cord tau pathology in 18 neuropathologically confirmed PSP cases, including different PSP variants: PSP-RS, PSP-CBS, PSP-P, PSP-PGF, and PSP-SL.

In our cohort, we analyzed and statistically compared both neuropathological and clinical data. Important concerns, however, were the very heterogeneous clinical descriptions coming from the multiple centers involved and the completely retrospective nature of our study. We addressed these concerns by using neuropathological analyses that were done according to the same protocols in one center, which created morphologic data which were homogeneous across all cases. To counterbalance this inconvenience and to analyze clinical data statistically, we developed our own semiquantitative assessment system since standardized clinical rating scales could not be applied retrospectively in all cases because of inconsistencies in clinical descriptions from different centers.

PSP can be broadly viewed as a multisystem neurodegenerative disorder due to its propensity to involve various, mainly motor control-associated brain areas. This is apparent from both clinical and neuropathological standpoints. From the clinician's view, PSP has, for a quite some time, been considered a homogenous disease associated with poor dopa-responsive parkinsonism, subcortical dementia, gait disturbance, early and frequent falls, incontinence, and supranuclear gaze palsy. However, there is increasing evidence of far more heterogeneity in PSP presentation, both clinically and neuropathologically [1, 19], than previously thought.

Spinal cord pathology in PSP, with neuronal loss and gliosis in the anterior horns, was first described in 1974 by Ishino et al. [7]. Several subsequent studies confirmed the presence of NFTs in spinal cord grey matter (using silver impregnation methods, electron microscopy, and anti-tau antibodies); however, evidence regarding their clinical relevance is still lacking [8–12, 14, 15, 20].

In a recent study of 3 typical and atypical PSP cases, Zhu et al. reported two cases of globose NFTs, NTs, and TAs in the anterior horns and surrounding white matter of the cervical spinal cord, although, they did not focus on the motor system [13].

Regarding corticospinal tract pathology, Josephs et al. described 12 atypical PSP cases with involvement of the internal capsule. However, these cases were subsequently reclassified as globular glial tauopathy [17, 21]. The question of whether clinical observations of patients with features of PSP and PLS [1] are associated with the presence of globular oligodendroglial inclusions in the corticospinal tract [21] merits further investigation.

Williams et al. suggested that RS (Richardson's syndrome corresponding to the "classic" form of PSP) differed from PSP subtypes having a more focal involvement (i.e., dopa-responsive parkinsonism and frequent absence of gaze palsy in PSP-P, predominately gait disturbance in PSP-PAGE, early and pronounced parietal lobe impairment in PSP-CBS, or progressive aphasia in PSP-SL) in both disease severity, rapidity of progression,

and extent of neuropathological changes [18]. These findings are in line with our neuropathological observation of widespread tau deposits in pyramidal structures (in all PSP cases) and a significantly greater involvement in PSP-RS compared to non-RS forms. Surprisingly, the clinical evidence was far less convincing.

In one case (case 2, see Additional file 2: Text) the patient progressed as expected with a typical form of RS, but later in the disease course signs of motor neuron disease developed (severe pseudobulbar and bulbar syndrome with hypersalivation, dysarthria evolving towards virtual mutism, dysphagia, a paralyzed and atrophic tongue, emotional incontinence, and hyperreflexia), which led us to consider comorbid motor neuron disease, although the EMG diagnostic criteria were not met. Similar cases have been reported in the literature [22].

Another case (case 16, see Additional file 2: Text) developed parkinsonism with akinesia and rigidity, which initially responded to levodopa. However, the disease progressed rapidly, and the patient became unable to walk within two years due to lower body parkinsonism, marked gonarthrosis, and spasticity of the lower extremities. Similarly, Papapetropoulos et al. found PSP-like diffuse tangle involvement in the spinal cord of a patient with a gradually progressive spastic gait, late supranuclear gaze palsy, and cognitive impairment [15].

As discussed before, the results of our study are in line with previous studies describing tau pathology in the spinal cord. However, the novelty of our study is linked to its more systematic analysis of the different levels of corticospinal tract involvement and correlations with clinical data. Interestingly, except for one case, none of the PSP cases presented with clinically significant upper or lower motor neuron symptomatology, despite moderate to severe tau pathology in many cases. The most common tau pathologies in the anterior horns were AT8-ir NCIs, NTs, and, to a lesser extent, GCIs; TAs were observed only in one PSP-P case. In view of these features as well as reports from the literature [21], it might be theorized that prominent corticospinal tract degeneration with corresponding clinical symptomatology are associated with massive oligodendroglial inclusions (globular inclusions) instead of coiled bodies as seen in our cases, which supports the concept that globular inclusions and not coiled bodies are markers of tract degeneration [23].

Since astroglial spinal cord AT8-tau pathology, as well as typical peripheral motor neuron symptomatology, were largely absent from both the upper and lower extremities in our cases, we can speculate that in PSP, glial dysfunction, rather than NTs or NCIs, in other areas of the pyramidal tract may be primarily responsible for PSP pathogenesis and clinical symptomatology. Indeed, it was shown that astroglial tau pathology frequently

precedes neuronal tau pathology in clinically relevant anatomical regions in cases of primary FTLD-tauopathies, suggesting that it is an indicator of early involvement of the degenerative process [24, 25].

Our study has two main limitations: first, even though large enough to allow for valid statistical analysis, the number of studied cases was limited, especially for certain subtypes of non-RS PSP cases, and second, the clinical analysis used in our study was based on a retrospective evaluation of medical records from five different centers. Therefore, a prospective study with a larger cohort of neuropathologically confirmed PSP cases would provide more precise conclusions regarding pyramidal motor system pathology in PSP cases.

Conclusions

The main findings of our study are in line with certain previously published neuropathological observations. They demonstrate that pyramidal cells and the pyramidal tract are involved in PSP patients and that the PSP-RS forms are significantly more affected than non-RS forms. We added to these findings clinical insight showing the occurrence of pyramidal signs in many PSP patients. However, our study failed to find any similar significant differences between RS and non-RS forms relative to clinical symptomatology.

Since PSP-RS patients frequently have faster disease progression and greater disability than non-RS forms, and since individual prognostic markers for PSP patients are still lacking, the detection of pyramidal symptoms in PSP may have prognostic importance, although our study was not designed primarily to address this issue.

Further studies are needed to ascertain the full value of a targeted clinical assessment of pyramidal signs in PSP patients.

Additional files

Additional file 1: Table S1. Detailed demographic and other description of individual cases. (DOCX 19 kb)

Additional file 2: Individual case clinical description. (DOCX 32 kb)

Abbreviations

3R: Three repeat tau isoform; 4R: Four repeat tau isoform; ALS: Amyotrophic lateral sclerosis; ARTAG: Age-related tau astroglialopathy; FTLD-tau: Frontotemporal lobar degenerations with tau pathology; GCI: Oligodendroglial coiled-body-type cytoplasmic inclusions; GGT: Globular glial tauopathy; ir: Immunoreactivity; LCS: Lateral corticospinal tract; M1: Primary motor cortex; NCI: Neuronal cytoplasmic inclusions; NFT: Neurofibrillary tangles; NTs: neuropil threads and dots; PART: primary age-related tauopathy; PSP: progressive supranuclear palsy; PSP-C: PSP with predominant cerebellar ataxia; PSP-CBS: PSP-corticobasal syndrome; PSP-F: PSP with early frontal lobe cognitive or behavioral presentations; PSP-nonRS: PSP other subtypes than Richardson's syndrome; PSP-OM: PSP with predominant ocular motor dysfunction; PSP-P: PSP with parkinsonism; PSP-PGF: PSP-pure akinesia with progressive gait freezing; PSP-PI: PSP with postural instability; PSP-PLS: PSP with features of primary lateral sclerosis;

PSP-RS: Richardson's syndrome; PSP-SL: PSP-speech/language disorder; TAs: astroglial cytoplasmic inclusions; WMW: Wilcoxon-Mann-Whitney test

Acknowledgments

The authors wish to thank Prof. Irena Rektorova, MD, PhD (First Department of Neurology, School of Medicine, Masaryk University and St. Ann's University Hospital, Brno, Czech Republic) for critical revision of the manuscript and Tom Secest, MSc, for revision of the English version of this article.

Funding

This work was supported by the Ministry of Health, Czech Republic (Conceptual development of research organization VFN64165, General University Hospital in Prague and DZ1716 and DZ1816, Thomayer Hospital in Prague, TN64190), by Charles University (Project Progress Q27/LF1, Q28/LF1, Q35/LF3 and project GAUK 113115) and by the Ministry of Education, Youth and Sports of the Czech Republic (NPU I LO1611). ZR obtained "AVASTipendium" scholarship from Czech Alzheimer Foundation and AVAST.

Availability of data and materials

All data generated or analyzed in this study are included in this published article and its Additional files.

Authors' contributions

ZS, ZR, RM, and GGK performed neuropathological diagnosis of the cases; ZS and ZR performed neuropathological analysis; RR and AB provided clinical data of the patients; RR and AT performed clinical data analysis; JK designed and performed statistical analysis of the obtained data; ZS, ZR, RR, RM, and AT drafted and finalized the manuscript; RM, RR, GGK, and AB reviewed the manuscript for intellectual content. All authors read and approved the final manuscript.

Ethics approval and consent to participate

The study was performed in accordance with the Declaration of Helsinki and written informed consent to participate in the study was obtained from all study participants and/or their next-of-kin/legal guardians. The study protocol was approved by the Multicenter Ethics Committee of Institute of Clinical and Experimental Medicine and Thomayer Hospital in Prague, Czech Republic (approval nr. G1827).

Consent for publication

Written informed consent to publish the results of this study was obtained from all study participants and/or their next-of-kin/legal guardians within the study protocol approved by the Multicenter Ethics Committee of Institute of Clinical and Experimental Medicine and Thomayer Hospital in Prague, Czech Republic (approval nr. G1827).

Competing interests

The authors declare that they have no competing interests.

Publisher's Note

Springer Nature remains neutral with regard to jurisdictional claims in published maps and institutional affiliations.

Author details

¹Department of Pathology and Molecular Medicine Third Faculty of Medicine, Charles University and Thomayer Hospital, Videnska 800, 14059 Prague 4 – Krc, Czech Republic. ²Department of Pathology, First Faculty of Medicine, Charles University and General University Hospital, Prague, Czech Republic. ³Department of Pathology, Third Faculty of Medicine, Charles University and University Hospital Kralovske Vinohrady, Prague, Czech Republic. ⁴Department of Neurology and Center of Clinical Neuroscience, First Faculty of Medicine, Charles University and General University Hospital, Prague, Czech Republic. ⁵Department of Neurology Third Faculty of Medicine, Charles University and Thomayer Hospital, Prague, Czech Republic. ⁶Faculty of Nuclear Sciences and Physical Engineering, Czech Technical University, Prague, Czech Republic. ⁷Institute of Neurology, General Hospital and Medical University of Vienna, Vienna, Austria. ⁸National Institute of Mental Health, Klecany, Czech Republic. ⁹Department of Neurology, Third Faculty of Medicine, Charles University and University Hospital Kralovske Vinohrady, Prague, Czech Republic.

Received: 13 July 2018 Accepted: 7 March 2019

Published online: 20 March 2019

References

- Hoglinger GU, Respondek G, Stamelou M, Kurz C, Josephs KA, Lang AE, et al. Clinical diagnosis of progressive supranuclear palsy: the movement disorder society criteria. *Mov Disord*. 2017;326:853–64. <https://doi.org/10.1002/mds.26987>.
- Chiu WZ, Kaat LD, Seelaar H, Rosso SM, Boon AJ, Kamphorst W, et al. Survival in progressive supranuclear palsy and frontotemporal dementia. *J Neurol Neurosurg Psychiatry*. 2010;814:441–5. <https://doi.org/10.1136/jnnp.2009.195719>.
- Boxer AL, Yu JT, Golbe LI, Litvan I, Lang AE, Hoglinger GU. Advances in progressive supranuclear palsy: new diagnostic criteria, biomarkers, and therapeutic approaches. *Lancet Neurol*. 2017;167:552–63. [https://doi.org/10.1016/S1474-4422\(17\)30157-6](https://doi.org/10.1016/S1474-4422(17)30157-6).
- Richardson JC, Steele J, Olszewski J. Supranuclear Ophthalmoplegia, pseudobulbar palsy, nuchal dystonia and dementia. A clinical report on eight cases of "heterogeneous system degeneration". *Trans Am Neurol Assoc*. 1963;8:25–9.
- Steele JC, Richardson JC, Olszewski J. Progressive Supranuclear palsy. A heterogeneous degeneration involving the brain stem, basal ganglia and cerebellum with vertical gaze and pseudobulbar palsy, nuchal dystonia and dementia. *Arch Neurol*. 1964;10:333–59.
- Dickson DW, Ahmed Z, Algom AA, Tsuboi Y, Josephs KA. Neuropathology of variants of progressive supranuclear palsy. *Curr Opin Neurol*. 2010;234:394–400. <https://doi.org/10.1097/WCO.0b013e32833be924>.
- Ishino H, Higashi H, Kuroda S, Yabuki S, Hayahara T. Motor nuclear involvement in progressive supranuclear palsy. *J Neurol Sci*. 1974;222:235–44.
- Kato S, Hirano A, Llena JF. Immunohistochemical, ultrastructural and immunoelectron microscopic studies of spinal cord neurofibrillary tangles in progressive supranuclear palsy. *Neuropathol Appl Neurobiol*. 1992;186:531–8.
- Kato T, Hirano A, Weinberg MN, Jacobs AK. Spinal cord lesions in progressive supranuclear palsy: some new observations. *Acta Neuropathol*. 1986;711(2):11–4 doi:
- Scaravilli T, Pramstaller PP, Salerno A, Egarter-Vigl E, Giometto B, Vitaliani R, et al. Neuronal loss in Onuf's nucleus in three patients with progressive supranuclear palsy. *Ann Neurol*. 2000;481:97–101 doi:
- Vitaliani R, Scaravilli T, Egarter-Vigl E, Giometto B, Klein C, Scaravilli F, et al. The pathology of the spinal cord in progressive supranuclear palsy. *J Neuropathol Exp Neurol*. 2002;613:268–74 doi:
- Iwasaki Y, Yoshida M, Hashizume Y, Hattori M, Aiba I, Sobue G. Widespread spinal cord involvement in progressive supranuclear palsy. *Neuropathology*. 2007;274:331–40. <https://doi.org/10.1111/j.1440-1789.2007.00787.x>.
- Zhu MW, Liu J, Arzberger T, Wang LN, Wang ZF. Typical or atypical progressive supranuclear palsy: a comparative clinicopathologic study of three Chinese cases. *Int J Clin Exp Pathol*. 2015;81:867–74.
- Nishimura M, Namba Y, Ikeda K, Akiguchi I, Oda M. Neurofibrillary tangles in the neurons of spinal dorsal root ganglia of patients with progressive supranuclear palsy. *Acta Neuropathol*. 1993;85:453–7 doi:
- Papapetropoulos S, Scaravilli T, Morris H, An SF, Henderson DC, Quinn NP, et al. Young onset limb spasticity with PSP-like brain and spinal cord NFT-tau pathology. *Neurology*. 2005;644:731–3. <https://doi.org/10.1212/01.WNL.0000150622.87222.12>.
- Kovacs GG, Ferrer I, Grinberg LT, Alafuzoff I, Attems J, Budka H, et al. Aging-related tau astroglial pathology (ARTAG): harmonized evaluation strategy. *Acta Neuropathol*. 2016;1311:87–102. <https://doi.org/10.1007/s00401-015-1509-x>.
- Ahmed Z, Bigio EH, Budka H, Dickson DW, Ferrer I, Ghetti B, et al. Globular glial tauopathies (GGT): consensus recommendations. *Acta Neuropathol*. 2013;1264:537–44. <https://doi.org/10.1007/s00401-013-1171-0>.
- Williams DR, Holton JL, Strand C, Pittman A, de Silva R, Lees AJ, et al. Pathological tau burden and distribution distinguishes progressive supranuclear palsy-parkinsonism from Richardson's syndrome. *Brain*. 2007;130(Pt 6):1566–76. <https://doi.org/10.1093/brain/awm104>.
- Lopez G, Bayulkem K, Hallett M. Progressive supranuclear palsy (PSP): Richardson syndrome and other PSP variants. *Acta Neurol Scand*. 2016;1344:242–9. <https://doi.org/10.1111/ane.12546>.
- Blumenthal H, Miller C. Motor nuclear involvement in progressive supranuclear palsy. *Arch Neurol*. 1969;204:362–7.
- Josephs KA, Katsuse O, Beccano-Kelly DA, Lin WL, Uitti RJ, Fujino Y, et al. Atypical progressive supranuclear palsy with corticospinal tract degeneration. *J Neuropathol Exp Neurol*. 2006;654:396–405. <https://doi.org/10.1097/01.jnen.0000218446.38158.61>.
- Nagao S, Yokota O, Nanba R, Takata H, Haraguchi T, Ishizu H, et al. Progressive supranuclear palsy presenting as primary lateral sclerosis but lacking parkinsonism, gaze palsy, aphasia, or dementia. *J Neurol Sci*. 2012;3231(2):147–53. <https://doi.org/10.1016/j.jns.2012.09.005>.
- Rohan Z, Milenkovic I, Lutz M, Matej R, Kovacs GG. Shared and distinct patterns of Oligodendroglial response in alpha-Synucleinopathies and Tauopathies. *J Neuropathol Exp Neurol*. 2016;7512:1100–9. <https://doi.org/10.1093/jnen/nlw087>.
- Ling H, Kovacs GG, Vonsattel JP, Davey K, Mok KY, Hardy J, et al. Astroglial pathology predominates the earliest stage of corticobasal degeneration pathology. *Brain*. 2016;139(Pt 12):3237–52. <https://doi.org/10.1093/brain/aww256>.
- Kovacs GG, Robinson JL, Xie SX, Lee EB, Grossman M, Wolk DA, et al. Evaluating the patterns of aging-related tau Astroglial pathology unravels novel insights into brain aging and neurodegenerative diseases. *J Neuropathol Exp Neurol*. 2017;764:270–88. <https://doi.org/10.1093/jnen/nlx007>.

Ready to submit your research? Choose BMC and benefit from:

- fast, convenient online submission
- thorough peer review by experienced researchers in your field
- rapid publication on acceptance
- support for research data, including large and complex data types
- gold Open Access which fosters wider collaboration and increased citations
- maximum visibility for your research: over 100M website views per year

At BMC, research is always in progress.

Learn more biomedcentral.com/submissions

