

Moderated poster presentation

## In vivo validation of a theory-based single-point $T_1$ mapping pulse sequence for quantitative first-pass cardiac perfusion MRI

Elodie Breton\*, Hyejin Eum, Sohae Chung, Daniel Kim and Leon Axel

Address: NYU Langone Medical Center - Radiology, New York, NY, USA

\* Corresponding author

from 13th Annual SCMR Scientific Sessions  
Phoenix, AZ, USA. 21-24 January 2010

Published: 21 January 2010

Journal of Cardiovascular Magnetic Resonance 2010, 12(Suppl 1):M7 doi:10.1186/1532-429X-12-S1-M7

This abstract is available from: <http://jcmr-online.com/content/12/S1/M7>

© 2010 Breton et al; licensee BioMed Central Ltd.

### Introduction

In quantitative analysis of first-pass contrast-enhanced cardiac perfusion MRI, the signal-time curves must be converted to contrast agent (gadolinium-DTPA) concentration-time curves. A theory-based single-point  $T_1$  measurement method has been proposed and validated in phantoms at 1.5 T [1,2] and 3 T (unpublished).

### Purpose

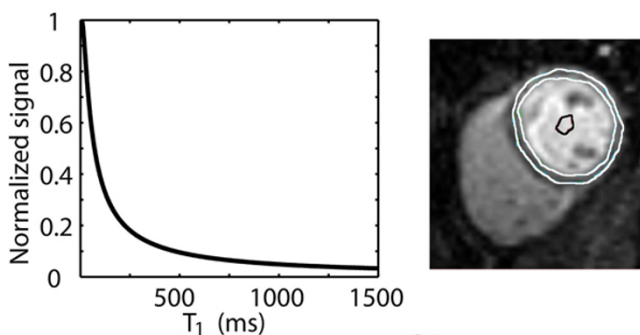
To validate *in vivo* the accuracy of the proposed single-point  $T_1$  mapping pulse sequence against a reference pulse sequence.

### Methods

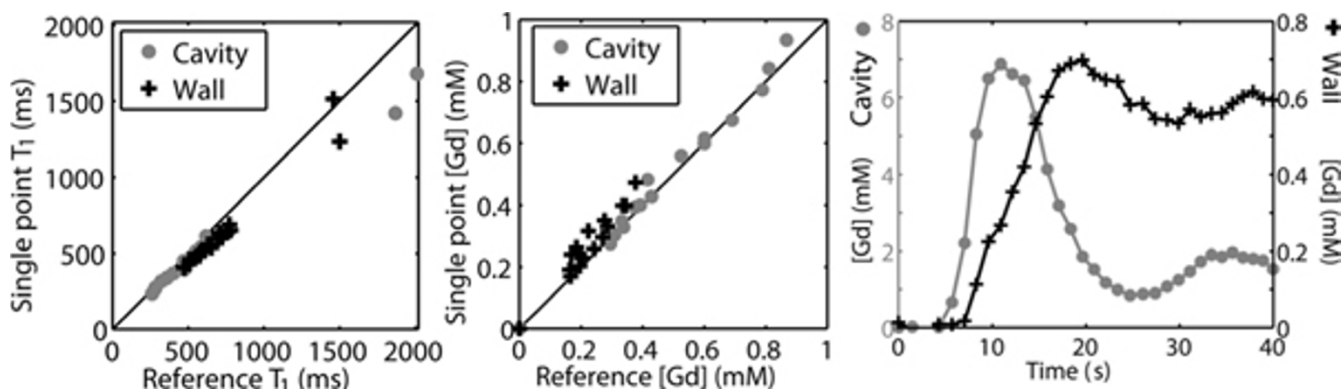
Two healthy volunteers were imaged in a short-axis plane of the heart on a 3 T whole-body MR scanner (Tim-Trio, Siemens) at 9 time points: pre-contrast, 5, 10, 15, and 20 min post first injection (0.1 mmol/kg, Magnevist) of Gd-DTPA, and 5, 10, 15, and 20 min post second injection of Gd-DTPA. A saturation-recovery TurboFLASH sequence was implemented with the following parameters: FOV = 320 mm × 262 mm, slice thickness = 8 mm, matrix = 144 × 94, TE/TR = 1.24 ms/2.4 ms, flip angle = 10°, T-SENSE-factor = 2, centric k-space trajectory, effective saturation pulse [3] with delay time (TD) = 50 ms, and total image acquisition time = 176 ms. The effective longitudinal magnetization in the center of k-space was calculated using the Bloch equation. A proton density-weighted image was acquired in the first heartbeat, without the saturation pulse, in order to normalize the image signal, and obtain a theoretical relationship between the signal and

$T_1$  (Fig. 1a). Contours for the myocardium and left ventricular (LV) cavity were drawn manually (Fig 1b).

Reference  $T_1$  measurements were performed with a multi-point saturation recovery TurboFLASH sequence with variable TD and a centric k-space trajectory. A varying trigger delay was introduced to acquire in mid-to-late-diastole, 550 ms after QRS detection. A least square linear regression was used to fit the experimental 6-point-curve (no saturation pulse - TD = 200-300-400-500-550 ms). The single-point and reference  $T_1$  measurement pulse sequences were performed during separate breathholds of 8 s and 6 s respectively. Measured  $T_1$ s were converted to



**Figure 1**  
a) Theoretical normalized signal intensity vs  $T_1$  (calculated for the sequence parameters)/b) Representative LV cavity (black) and wall (white) ROIs.



**Figure 2**

**a) Linear correlation bw. single-point and reference  $T_1$ .** b) Linear correlation bw. single-point and references Gd-DTPA concentrations. c) LV cavity and wall GD-time curve of a cardiac first-pass perfusion, calculated from the single-point  $T_1$  method.

Gd-concentrations ([Gd]) assuming fast water exchange condition [4] and  $T_1$  relaxivity of 3.8 L/mmol/s [5,6].

## Results

Figure 2a/b show respectively the single point  $T_1$ /[Gd] plotted against the reference  $T_1$ /[Gd] in the LV cavity and the myocardium. A strong linear correlation was found for all curves (Pearson correlation coefficient = 0.98;  $p < 0.001$ ). Representatives LV cavity and wall [Gd]-time curves calculated from data acquired during first passage of Gd-DTPA are shown in (fig. 2c).

## Conclusion

The study shows that our theory-based single-point  $T_1$  measurement method and the multi-point  $T_1$  measurement method produce quantitatively equivalent [Gd] values. Future studies include in vivo validation in patients.

## References

1. Cernicau, et al.: *Acad Radiol* 2006.
2. Kim, et al.: *MRM* in press.
3. Hsu, et al.: *JRMI* 2008.
4. Donahue, et al.: *JRMI* 1997.
5. Rohrer, et al.: *Invest Radiol* 2005.
6. Pinstaske, et al.: *Invest Radiol* 2006.

Publish with **BioMed Central** and every scientist can read your work free of charge

"BioMed Central will be the most significant development for disseminating the results of biomedical research in our lifetime."

Sir Paul Nurse, Cancer Research UK

Your research papers will be:

- available free of charge to the entire biomedical community
- peer reviewed and published immediately upon acceptance
- cited in PubMed and archived on PubMed Central
- yours — you keep the copyright

Submit your manuscript here:  
[http://www.biomedcentral.com/info/publishing\\_adv.asp](http://www.biomedcentral.com/info/publishing_adv.asp)

