

RESEARCH ARTICLE

Open Access

Mode of delivery and other risk factors for *Escherichia coli* infections in very low birth weight infants

Agnieszka Chmielarczyk^{1*}, Jadwiga Wójkowska-Mach¹, Dorota Romaniszyn¹, Paweł Adamski², Ewa Helwich³, Ryszard Lauterbach⁴, Monika Pobiega¹, Maria Borszewska-Kornacka⁵, Ewa Gulczyńska⁶, Agnieszka Kordek⁷ and Piotr B Heczko¹

Abstract

Background: Infections in newborns remain one of the most significant problems in modern medicine. *Escherichia coli* is an important cause of neonatal bloodstream and respiratory tract infections and is associated with high mortality. The aim of our study was to investigate the epidemiology of *E. coli* infection in Polish neonatal intensive care units (NICUs) and resistance to antibiotics, with particular reference to the safety of very low birth weight infants.

Methods: Continuous prospective infection surveillance was conducted in 2009–2012 in five NICUs, including 1,768 newborns whose birth weight was <1.5 kg. *Escherichia coli* isolates from different diagnostic specimens including blood, tracheal/bronchial secretions and others were collected. All isolates were tested using disk diffusion antimicrobial susceptibility methods. Pulsed-field gel electrophoresis was used to determine the possible horizontal transfer of *E. coli* among patients.

Results: The incidence of *E. coli* infections was 5.4% and 2.0/1,000 patient-days. The occurrence of *E. coli* infections depended significantly on the NICU and varied between 3.9% and 17.9%. Multivariate analysis that took into account the combined effect of demographic data (gender, gestational age and birth weight) and place of birth showed that only the place of hospitalisation had a significant effect on the *E. coli* infection risk. The highest levels of resistance among all *E. coli* isolates were observed against ampicillin (88.8%) and amoxicillin/clavulanic acid (62.2%). Among *E. coli* isolates, 17.7% were classified as multidrug resistant. *Escherichia coli* isolates showed different pulsotypes and dominant epidemic clones were not detected.

Conclusions: Our data indicate that antibiotic prophylaxis in the presence of symptoms such as chorioamnionitis and premature rupture of membranes did not help reduce the risk of *E. coli* infection. Multivariate analysis demonstrated only one significant risk factor for *E. coli* infection among infants with a birth weight <1.5 kg, that is, the impact of the NICU, it means that both neonatal care and care during pregnancy and labour were found to be significant.

Keywords: Very low birth weight, Infections, *Escherichia coli*, Surveillance

* Correspondence: aga.chmielarczyk@gmail.com

¹Department of Microbiology, Jagiellonian University Medical College, 18 Czysła Street, 31-121 Krakow, Poland

Full list of author information is available at the end of the article

Background

Infections in newborns, particularly those with very low birth weight of <1.5 kg, remain one of the most significant problems in modern medicine. *Escherichia coli* is an important cause of neonatal bloodstream and respiratory tract infections and is associated with high mortality [1,2].

In late-onset infection, *E. coli* may be acquired from the mother or the environment and may enter the bloodstream from the urinary or gastrointestinal tract [3]. Several studies have demonstrated a high rate of transmission of *E. coli* within families and households [4,5]. *Escherichia coli* species comprise commensal strains, intestinal pathogenic strains and others that cause infections outside the gastrointestinal system, such as extra-intestinal pathogenic *E. coli*. Extra-intestinal infections due to *E. coli* are common in all age groups and include bacteremia, urinary tract infection, meningitis (mostly in neonates), nosocomial pneumonia and others [6].

Cephalosporin, fluoroquinolone and trimethoprim-sulfamethoxazole are widely used to treat infections caused by *E. coli* and resistance to these agents is responsible for treatment failure [7]. The development of multidrug resistance (MDR) among *E. coli* isolates is also of concern [8].

Enterobacteriaceae-producing extended-spectrum β -lactamases (ESBLs) have emerged as serious pathogens in hospitals and have been increasingly implicated in nosocomial outbreaks in neonatal intensive care units (NICUs). They have important therapeutic implications as they exhibit resistance to several antimicrobial agents, including third-generation cephalosporins, extended-spectrum penicillin and monobactam. Carbapenems and cephamycins represent the only classes of antibiotics active against ESBLs [9].

Escherichia coli has been reported as one of the major causes of neonatal infections that may cause high morbidity and mortality [10]. Potential risk factors of *E. coli* neonatal infections have also been analysed.

Considering the increasing antimicrobial resistance and mortality in NICUs, there is an urgent need to understand the epidemiology and risk factors of *E. coli* infections. Therefore, the aim of our study was to investigate the epidemiology of infections caused by *E. coli* in five Polish NICUs, resistance to antibiotics and potential risk factors that may contribute to such infections (*E. coli* infections were compared with infections caused by other bacteria). We also considered the possibility of using data on *E. coli* infection in assessing the quality of perinatal care. All these data may contribute to infection prevention and better control, and the routes of transmission of *E. coli* were also evaluated.

Methods

Ethics

The Polish Neonatal Surveillance Network (PNSN), whose director is Prof. Ewa Helwich from the Institute of Mother and Child in Warsaw, covered six Neonatal Clinics within the territory of Poland: Clinic of Neonatology and Intensive Neonatal Care, Institute of Mother and Child, Warsaw, Clinic of Neonatology, Jagiellonian University Medical College, Krakow, Clinic of Neonatology and Intensive Neonatal Care, Warsaw Medical University, Warsaw, Clinic of Neonatology, Polish Mothers' Memorial Hospital-Research Institute, Lodz, Department of Neonatal Diseases, Pomeranian Medical University, Szczecin and Gynaecology and Obstetrics Hospital Medical University Poznan. The Polish Neonatal Surveillance Network was established on 6th of September 2007 (Agreement; see attachment). The Chair of Microbiology cooperated within the program of the PNSN. Utilization of data collected in the PNSN for scientific purposes was approved by the Bioethics Committee of Jagiellonian University Medical College (Chairperson Prof. Piotr Thor) – no. KBET/221/B/2011) on 27 October 2011 (Appropoval; see attachment). All data entered into the electronic database and analysed during this study were previously anonymised and de-identified.

Study population

A prospective surveillance of infections was conducted between 1 January 2009 and 31 December 2012 in five from six NICUs that participated in the activities of the PNSN.

The study covered 1,768 newborns. All episodes of infection were subjected to registration, regardless of the time of occurrence of the first symptoms. Case patients were defined according to Gastmeier et al. [11], with modifications for neonates with birth weight <1.5 kg. Early-onset infection (EOI) was defined as infection diagnosed within 3 days of delivery. The occurrence of chorioamnionitis was based on clinical data (all cases) and histopathology examination of the placenta (~65% of cases).

Bacterial isolates

Various diagnostic specimens including blood, and tracheal/bronchial secretions were collected for culture and assessment of the microbial aetiology of infections. Altogether, 96 *E. coli* strains were isolated, and the present study covered 90 isolates (six were not stored). Isolates were identified by the automated identification system (VITEK 2; bioMérieux, Warsaw, Poland). Isolates from other infections were also analysed. Aetiological factors of other infections were: other Gram-negative bacteria, Gram-positive bacteria, atypical bacteria and yeast.

Antimicrobial susceptibility

All isolates were tested using disk diffusion antimicrobial susceptibility methods on Mueller–Hinton agar plates according to the current EUCAST guidelines (European Committee on Antimicrobial Susceptibility Testing, Clinical breakpoint tables v. 3.1; <http://www.eucast.org> v.3.1, accessed: 11.02.2013). ESBL activity was detected with a modified double disk synergy test using a combination of cefotaxime, ceftazidime, cefepime and aztreonam discs, placed 20 mm apart around the disc containing amoxicillin/clavulanic acid [12].

Pulsed-field gel electrophoresis (PFGE)

PFGE was used to determine the possible horizontal transfer of *E. coli* strains among patients. All isolates were analysed using the standardized PFGE protocol developed at the Centers for Disease Control and Prevention by the PulseNet program <http://www.cdc.gov/pulsenet/pathogens/ecoli.html> (accessed: 11.02.2013). Genomic DNA was digested with 10 U *Xba*I (Thermo-Scientific, ABO, Gdansk, Poland). The resulting DNA fingerprinting was analysed using the CHEF III PFGE system (BioRad, Warsaw, Poland) in 0.5 Tris–borate–EDTA buffer at 14°C at 6 V for 20 h with a ramped pulse time of 2.2–54.2 s. The GelCompar (Applied Maths) was used for cluster analysis using the Dice coefficient and the unweighted pair group method with arithmetic mean.

Risk factors

Several potential risk factors were compared according to infections caused by *E. coli* and by other strains: birth weight, gestational age, CRIB, Apgar score, sex, type of birth, feeding patterns (breastfeeding, trophic feeding, or parenteral nutrition), perinatal antibiotic prophylaxis, prolonged premature rupture of membranes (PROM).

Statistical analysis

The influence of type of care and sociodemographic characteristics on the epidemiology of *E. coli*/other infection was analysed with several statistical techniques, depending on type and distribution of analysed variables. The relation between probability of *E. coli* and continuous parameters (age, length of stay) was based on simple analysis of variance (ANOVA). If the distribution of continuous variables significantly differed from normality, the nonparametric alternative to ANOVA, the Kruskal–Wallis test, was used. For the contingency of nominal characters frequency test: Pearson's chi-square (χ^2) and likelihood ratio was used. The common influence of risk factors on *E. coli* identification was analysed with a generalised linear model. Because of the categorical character of the effect and combined — numerical as well as categorical — types of the predictors, the model was constructed for binominal distribution of dependent

variables and logit-linked function. A p value <0.05 was considered significant. All analyses were performed using JMP version 9.3 (SAS Institute Inc., Cary, NC, USA).

Results

Non-*E. coli* infections

Neonates with infections of non-*E. coli* aetiology were characterised by better general condition at birth (Table 1) than neonates with *E. coli* infections. Significantly fewer infants had adverse perinatal outcomes, such as PROM or chorioamnionitis, while significantly more newborns were delivered by caesarean section. The fatality rate of newborns with non-*E. coli* infections was two times lower than in those with *E. coli* infections.

Escherichia coli infections

The incidence of *E. coli* infections was 5.4% and 2.0/1,000 patient-days. EOIs accounted for 12.2% of all infections and late-onset infections (LOIs) accounted for 10.5%. The incidence of EOIs was 1.7% and LOIs was 3.7%. The occurrence of *E. coli* infections (both EOI and LOI) depended significantly on the NICU ($\chi^2 = 73,836$; $p < 0.0001$) and varied between 3.9% and 17.9%. The most common *E. coli* infection was pneumonia (53.1%) and bloodstream infection (40.6%). *Escherichia coli* infections were diagnosed at day 17 on average (median: 12 days).

The mean length of hospitalisation (from birth to discharge, or until a weight of 1.8 kg was reached) of newborns with non-*E. coli* infections was significantly shorter: 48 versus 55 days (infants with *E. coli* infection).

The gestational age and birth weight of newborns with *E. coli* infections were lower than in those without infection or with other infections (Table 1). The other risk factors of *E. coli* infections were: low Apgar 1 and Apgar 5 scores, total parenteral nutrition, chorioamnionitis, or PROM diagnosed during pregnancy or delivery (Table 1).

Caesarean section reduced the risk of *E. coli* infection, although perinatal antibiotic prophylaxis (PAP) (no standardised protocol) did not reduce the risk of infection; that is, despite the use of PAP, *E. coli* infections were observed significantly more frequently (Table 1).

Multivariate analysis

Multivariate analysis that took into account the combined effect of intrapartum antibiotic prophylaxis (IAP), PROM, chorioamnionitis and delivery mode (caesarean section) showed no significant effect on the risk of *E. coli* infection for factors other than the mode of delivery. However, multivariate analysis that took into account the combined effect of demographic data (sex, gestational age and birth weight) and place of birth (NICU) showed that only the place of hospitalisation had a significant effect on *E. coli* infection risk.

Table 1 The characteristics of newborns with symptoms of infections and *E. coli* infections

Risk factors	Infants without infections [N = 890]		Infants with other infections [N = 782]		OR	95% CI	P*-value	Infants with <i>E. coli</i> -infections [N = 96]		OR	95% CI	P**-value
	Average	95% CI	Average	95% CI				Average	95% CI			
Birth weight	1091.4	[1072.4, 1110.4]	991.1	[971.9,1010.2]	NA		<0.0001	909.1	[858.6, 959.6]	NA		<0.0001
Gestational age	29.1	[28.8, 29.3]	28.0	[27.8, 28.2]	NA		<0.0001	27.0	[26.5, 27.6]	NA		<0.0001
CRIB	4.5	[4.1, 5.0]	4.4	[4.0, 4.8]	NA		-	5.5	[4.1, 6.8]	NA		-
Apgar (1 min.)	5.5	[5.3, 5.6]	5.3	[5.2, 5.4]	NA		<0.0001	4.8	[4.4, 5.2]	NA		<0.0001
Apgar (5 min.)	6.0	[5.9, 6.2]	6.0	[5.9, 6.2]	NA		-	5.7	[5.3, 6.1]	NA		<0.0001
Number and percentage of population												
Female gender	438	49.2	350	44.8	1.19	0.986-1.45	-	44	45.8	0.96	0.626-1.465	-
Caesarean section	731	82.1	624	79.8	1.03	0.803-1.326	0.0002	62	64.6	2.17	1.377-3.408	<0.0001
Breast feeding	64	7.2	44	5.6	1.29	0.874-932	-	3	3.1	5482	0.563-6.071	-
Trophic feeding	295	33.1	310	39.6	0.75	0.618-0.922	0.008	42	43.8	0.84	0.550-1.295	<0.0001
Total parenteral nutrition	319	35.8	409	52.3	0.51	0.419-0.619	<0.0001	56	58.3	0.78	0.509-1.203	<0.0001
Perinatal antibiotic prophylaxis	335	37.6	344	44.0	0.77	0.632-0.935	0.009	46	47.9	0.85	0.558-1.305	<0.0001
Death of the patient	209	23.5	64	8.2	3.44	2.553-4.643	<0.0001	14	14.6	0.52	0.280-0.972	<0.0001
Infants born from deliveries where the following were diagnosed during the mother's pregnancy:												
PROM	185	20.8	211	27.0	0.71	0.566-0.890	0.0008	33	34.4	0.71	0.449-1.106	<0.0001
Chorioamnionitis	62	7.0	60	7.7	0.90	0.623-1.303	-	13	13.5	0.53	0.279-1.000	<0.0001

P* value: analysis of infants without infection versus those with non-*E. coli* infections.

P** value: analysis of infants with non-*E. coli* infections versus infants with *E. coli* infections.

CRIB, clinical risk index for babies.

Finally, a multivariate analysis of maternal influences on IAP, PROM, amniotic inflammation, type of labour, gestational age, NICU and the likelihood of specific *E. coli* infections (vs. other infections) showed a significant statistical relationship with the complete model.

Escherichia coli resistance and similarity of strains

Analysis of the isolates showed that the highest levels of resistance among all *E. coli* isolates were observed against ampicillin (88.8%) and amoxicillin/clavulanic acid (62.2%), trimethoprim/sulfamethoxazole (34.4%) and aztreonam (33.3%). The ESBL phenotype was found among 25 isolates (27.7%). Sixteen of the ESBL-positive strains (17.7%) were also reported as resistant to at least two other groups of antibiotics (fluoroquinolones, aminoglycosides or trimethoprim-sulfamethoxazole), which allows us to consider these strains as MDR organisms (Table 2).

Resistance to ampicillin ($p = 0.0375$), amoxicillin/clavulanic acid, ceftazidime, cefotaxime, cefuroxime, cefepime,

aztreonam (all p -values < 0.0001), amikacin ($p = 0.0012$), gentamicin ($p = 0.0016$), tobramycin ($p < 0.0001$), trimethoprim/sulfamethoxazole ($p = 0.0016$) and ciprofloxacin ($p < 0.0001$) in a group of ESBL-positive strains was significantly higher than in ESBL-negative strains. Only five of the studied isolates were resistant to one of four tested carbapenems; three of these isolates belong to non-ESBL strains. Almost all *E. coli* strains (97.8%) were susceptible to tigecycline and piperacillin/tazobactam.

Escherichia coli isolates showed that different pulsotypes and dominant epidemic clones were not detected. Cluster analysis based on PFGE of the 90 isolates showed 71 unique types, some of which were $< 70\%$ similar, suggesting a genotypically variable population (Figure 1). Isolates that have identical pulsotypes usually were derived from the same patient (as in the case of 11 isolates) or were isolated from different patients of the same NICU in the same period of time (in the case of seven isolates). The location of the NICU and the site of

Table 2 Characteristics of ESBL-positive strains

Isolate	Site of isolation	Resistance profile	MDR organism (yes/no)
114	Respiratory tract	Amp, Amc, Fep, Cxm, Atm, Tob, Cn, Sxt, C	Yes
120	Respiratory tract	Amp, Amc, Fep, Caz, Ctx, Cxm, Atm, Sxt, Cip, C	Yes
124	Respiratory tract	Amp, Amc, Fep, Caz, Ctx, Cxm, Atm, Tob, Cn, Sxt, Cip, C	Yes
45	Respiratory tract	Amp, Amc, Fep, Caz, Ctx, Cxm, Atm, Tob, Cn, Ak	No
110S	Rectum	Amp, Amc, Caz, Ctx, Cxm, Atm, Dor	No
227	Respiratory tract	Amp, Amc, Fep, Ctx, Cxm, Atm	No
197	Amniotic fluid	Amp, Amc, Fep, Ctx, Cxm, Atm	No
226	Blood	Amp, Amc, Fep, Caz, Ctx, Cxm, Atm, Tob, Sxt, Cip	Yes
7	Respiratory tract	Amp, Amc, Fep, Caz, Ctx, Cxm, Atm, Tob	No
13	Respiratory tract	Amp, Amc, Ctx, Cxm, Atm	No
118	Respiratory tract	Amp, Amc, Caz, Ctx, Cxm, Atm, Tob, Sxt, Cip	Yes
159	Respiratory tract	Amp, Amc, Caz, Ctx, Cxm, Atm, Tob, Cn, Sxt, Cip, Tzp	Yes
160	Respiratory tract	Amp, Amc, Caz, Ctx, Cxm, Atm, Tob, Cn, Sxt, Cip, Tzp	Yes
105S	Respiratory tract	Amp, Amc, Ctx, Cxm, Atm, Tob, Cn, Ak, Sxt	Yes
24 W	Rectum	Amp, Amc, Fep, Caz, Ctx, Cxm, Atm, Ak, Sxt, Cip	Yes
32 W	Rectum	Amp, Amc, Fep, Ctx, Cxm, Atm, Tob, Cn, Ak, Sxt	Yes
14	Blood	Amp, Amc, Fep, Caz, Ctx, Cxm, Atm, Tob, Cip	Yes
62	Blood	Amp, Amc, Fep, Caz, Ctx, Cxm, Atm, Tob, Ak, Sxt, Cip	Yes
166	Blood	Amp, Amc, Caz, Ctx, Cxm, Atm, Tob, Sxt, Cip	Yes
205	Blood	Amp, Amc, Fep, Caz, Ctx, Cxm, Atm, Tob, Sxt, Cip	Yes
3 W	Blood	Amp, Fep, Caz, Ctx, Cxm, Atm, Tob, Cn, Ak	No
9	Urine	Amp, Amc, Fep, Ctx, Cxm, Atm	No
15	Urine	Amp, Amc, Fep, Ctx, Cxm, Atm	No
42	Respiratory tract	Amp, Amc, Fep, Caz, Ctx, Cxm, Atm, Tob, Ak, Sxt, Cip	Yes
112	Respiratory tract	Amp, Amc, Fep, Ctx, Cxm, Dor, Atm, Sxt, C	Yes

Amp, ampicillin; Amc, amoxicillin/clavulanic acid; Fep, cefepime; Ctx, cefotaxime; Caz, ceftazidime; Cxm, cefuroxime; Dor, doripenem; Atm, aztreonam; Tob, tobramycin; Ak, amikacin; Cn, gentamicin; Sxt, trimethoprim/sulfamethoxazole; C, chloramphenicol; Cip, ciprofloxacin; Tzp, piperacillin/tazobactam.

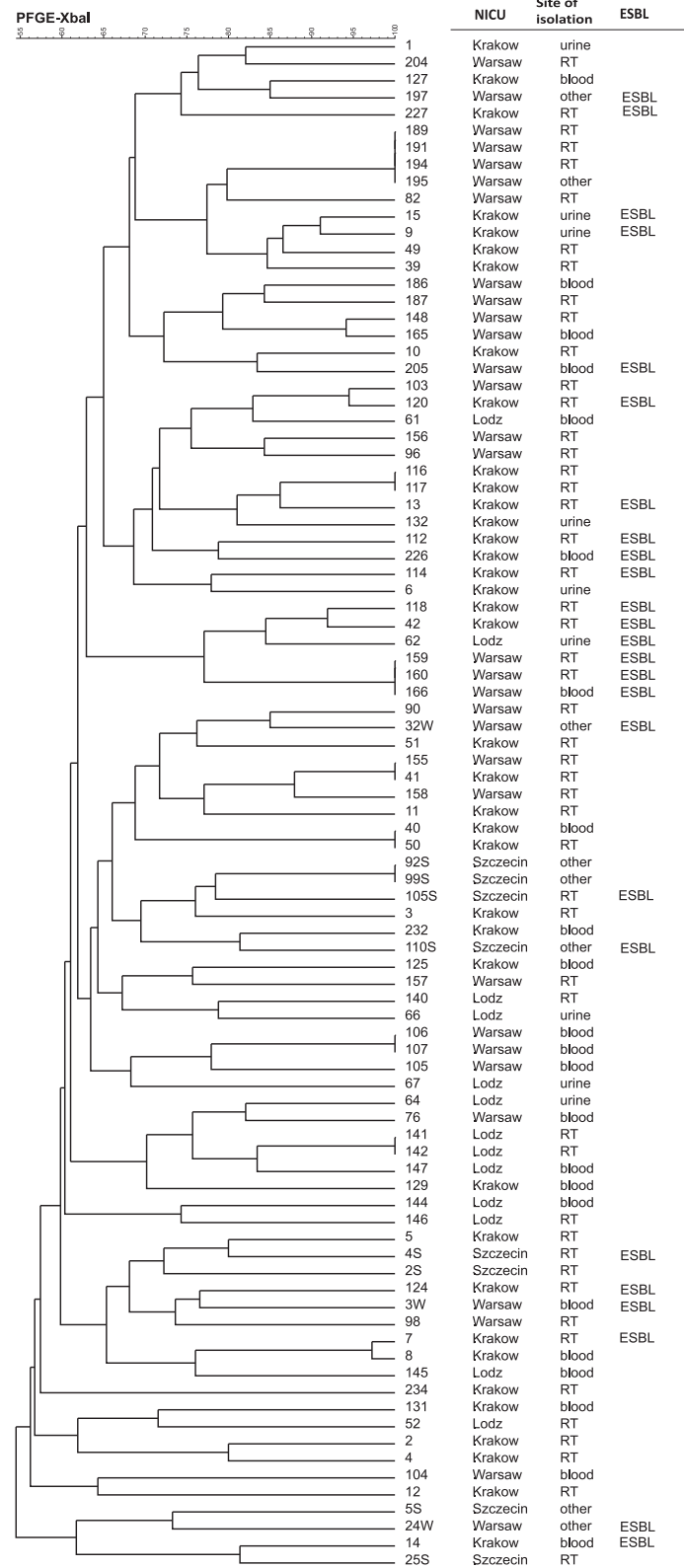


Figure 1 Results of PFGE typing of *E. coli* isolates.

the isolation did not appear to have a correlation in the cluster analysis.

Discussion

Infections in newborns, particularly those with very low and extremely low birth weights of <1.5 kg, are a significant problem. *Escherichia coli* is responsible for a smaller fraction of neonatal infections than other microorganisms, but it is associated with the highest mortality [13].

Data collected by the European Antimicrobial Resistance Surveillance Network confirm that in Europe from 2002 to 2009 the occurrence of *E. coli* in bloodstream infections increased by more (71%) than *Staphylococcus aureus* (34%), which indicates the growing importance of *E. coli* in the epidemiology of infections [14] and the need for detailed molecular studies of these strains. Our study was performed to characterise the population of *E. coli* isolated from neonatal infections; mainly from pneumonia and bloodstream infections from Polish NICUs.

According to other data, *E. coli* causes about 9% of infections [15] or 5–13% of LOI in NICUs [15–17]. Additionally, in Polish NICUs, *E. coli* was the most frequently isolated pathogen in early-onset PNSN infections [18]. In recent years, *E. coli* infections in NICUs have become more prevalent, and it is believed that this is mainly owing to the implementation of PAP [19–21].

Other studies on *E. coli* have identified that low gestational age [22], duration of hospital stay [23] and use of antibiotics [24–26] are the risk factors of colonisation and infection among newborns. Our results support these data, and we hypothesise that another major risk factor may be maternal colonisation. According to Denk et al., colonised mothers may be an important reservoir of *E. coli* and significant risk factors for *E. coli* colonisation, and consequently, *E. coli* infections of very low birth weight infants [27].

Unfortunately, screening of mothers was not performed in NICUs of PNSN, but our PFGE results support our hypothesis: the population of *E. coli* was divergent and no epidemic clones were identified. That is totally different than for other species such as methicillin-resistant *S. aureus* or *Klebsiella pneumoniae* [28].

The mode of delivery seems to be a protective factor against *E. coli* infections and also supports the hypothesis on maternal–neonatal transmission. About 17.9% of neonates without infections were born vaginally, compared with 35.4% of those with *E. coli* infection. The vagina is a significant reservoir of *E. coli*, which can be critical in vertical transmission of *E. coli* infection. Our results indicate that perinatal factors and vaginal transmission may also significantly affect the epidemiology of *E. coli* infection, including LOI, which could be important for control of hospital-acquired infections.

In our study, the fatality rate of *E. coli* infections was almost twice as high as that of infections of other aetiology. The reason for this was mainly the high pathogenicity of *E. coli*: the majority of tested strains belonged to one of two virulence groups (B2, 68.9%, or D, 17.8%) [6,29]. Isolates from the B2 group had significantly more virulence genes than isolates from other groups; in particular, *fimH*, *sfa*, *ireA*, *flhA*, *fyuA* and *fepA* genes were more likely to occur [29]. Similarly, 36.6% of strains belonged to the ST131 clone and showed a high level of virulence and resistance, which could play an important role in the epidemiological success of this sequence type. Clonal group ST131 contained slightly more than one-third of the studied isolates and had a link to ESBL production [29].

Among ESBL-positive isolates, which accounted for 27.7% of all isolates, higher levels of resistance to aminoglycosides and also ciprofloxacin and trimethoprim-sulfamethoxazole were observed compared with non-ESBL isolates. The higher level of resistance may contribute to the fact that such resistance is localised mainly on plasmids and may be easily transferred not only among *E. coli* isolates, but also among isolates belonging to other species. Using of one of the antibiotics (β -lactam, aminoglycoside, or fluoroquinolones) may lead to the co-selection of fluoroquinolone resistance by β -lactams or aminoglycosides, and *vice versa* β -lactams or aminoglycoside resistance by fluoroquinolones [30].

Conclusions

Our study showed that there are some risk factors that should be considered during perinatal care. Routine screening of mothers and newborns for *E. coli* should be implemented in maternity care to decrease morbidity and mortality. Pre-partum hospitalisation for premature labour should be an indication for screening by rectal swabs, prenatally and on the day of birth. Unfortunately, the presented data indicate that PAP in the presence of symptoms such as chorioamnionitis and PROM did not help to reduce the risk of *E. coli* infections. Multivariate analysis demonstrated only one significant risk factor for *E. coli* infection among infants with a birth weight <1.5 kg, namely, the impact of the NICU.

Consent

Electronic database created as the result of continuous prospective targeted surveillance of infections was used in the study.

Participation of hospitals in PNSN was voluntary and confidential. Utilization of data collected in PNSN for the scientific purpose was approved by the Bioethics Committee of Jagiellonian University Medical College – no. KBET/221/B/2011. All data entered into the electronic database and analyzed during preparing this

article were previously anonymized and de-identified. Those data were obtained under routine treatment and diagnostic procedures performed during patients' hospitalization. No additional samples were collected for testing. According to Polish law, utilization this kind of data for scientific purpose does not demand patients' agreement or even information that data are collected in the database.

Abbreviations

BSI: Bloodstream infection; EOI: Early-onset infection; ESBL: Extended-spectrum β -lactamase; IAP: Intrapartum antibiotic prophylaxis; LOI: Late-onset infection; MDR: Multidrug resistance; NICU: Neonatal intensive care unit; PAP: Perinatal antibiotic prophylaxis; PFGE: Pulsed-field gel electrophoresis; PROM: Premature rupture of membranes.

Competing interests

The authors declare that they have no competing interests.

Authors' contributions

ACH carried out the molecular genetic studies (PFGE), drafted the manuscript and financially supported the study. JWM designed the study, analysed and interpreted the epidemiological data, and drafted the manuscript. DR carried out the antimicrobial susceptibility studies. MP performed the statistical analysis and drafted the manuscript. PA performed the statistical analysis. RL, MBK, EG and AK collected and analysed the data and participated in study design. EH and PBH conceived the study, participated in its design and helped to draft the manuscript. All authors read and approved the final manuscript for publication.

Acknowledgements

The authors wish to thank the staff of the NICUs for their help and interest in the study.

Funding

This study was partially supported by a grant from the Ministry of Science and Higher Education (DEC-2011/01/D/N27/00104).

Author details

¹Department of Microbiology, Jagiellonian University Medical College, 18 Czyska Street, 31-121 Krakow, Poland. ²Institute of Nature Conservation, Polish Academy of Sciences, Krakow, Poland. ³Clinic of Neonatology and Intensive Neonatal Care, Institute of Mother and Child, Warsaw, Poland. ⁴Clinic of Neonatology, Jagiellonian University Medical College, Krakow, Poland. ⁵Clinic of Neonatology and Intensive Neonatal Care, Warsaw Medical University, Warsaw, Poland. ⁶Clinic of Neonatology, Polish Mothers' Memorial Hospital-Research Institute, Lodz, Poland. ⁷Department of Neonatal Diseases, Pomeranian Medical University, Szczecin, Poland.

Received: 31 July 2014 Accepted: 9 October 2014

Published: 18 October 2014

References

1. Stoll BJ, Hansen N, Higgins RD, Fanaroff AA, Duara S, Goldberg R, Laptook A, Walsh M, Oh W, Hale E: **National institute of child health and human development: very low birth weight preterm infants with early onset neonatal sepsis: the predominance of gram-negative infections continues in the national institute of child health and human development neonatal research network, 2002–2003.** *Pediatr Infect Dis J* 2005, **24**:635–639.
2. Doit C, Mariani-Kurkdjian P, Mahjoub-Messai F, Bidet P, Bonacorsi S, Carol A, Varon E, Bingen E: **Epidemiology of paediatric community-acquired bloodstream infections in a children's hospital in Paris, France, 2001 to 2008.** *Diagn Microbiol Infect Dis* 2010, **66**:332–335.
3. Soto SM, Bosch J, Jimenez De Anta MT, Vila J: **Comparative study of virulence traits of *Escherichia coli* clinical isolates causing early and late neonatal sepsis.** *J Clin Microbiol* 2008, **46**:1123–1125.
4. Birgy A, Mariani-Kurkdjian P, Bidet P, Doit C, Genel N, Courroux C, Arlet G, Bingen E: **Characterization of extended-spectrum-beta-lactamase-producing *Escherichia coli* strains involved in maternal-fetal colonization: prevalence of *E. coli* ST131.** *J Clin Microbiol* 2013, **51**(6):1727–1732.
5. Rodriguez-Baño J, López-Cerero L, Navarro MD, Díaz De Alba P, Pascual A: **Faecal carriage of extended-spectrum β -lactamase-producing *Escherichia coli*: prevalence, risk factors and molecular epidemiology.** *J Antimicrob Chemother* 2008, **62**:1142–1149.
6. Pitout JD: **Extraintestinal: pathogenic *Escherichia coli*: a combination of virulence with antibiotic resistance.** *Front Microbiol* 2012, **3**:9.
7. Woodford N, Turton JF, Livermore DM: **Multiresistant Gram-negative bacteria: the role of high-risk clones in the dissemination of antibiotic resistance.** *FEMS Microbiol Rev* 2011, **35**:736–755.
8. Hawkey PM, Jones AM: **The changing epidemiology of resistance.** *J Antimicrob Chemother* 2009, **64**:3–10.
9. Coque TM, Baquero F, Canton R: **Increasing prevalence of ESBL-producing Enterobacteriaceae in Europe.** *Euro Surveill* 2008, **13**:47.
10. Stoll BJ, Hansen N, Fanaroff AA, Wright LL, Carlo WA, Ehrenkranz RA, Lemons JA, Donovan EF, Stark AR, Tyson JE, Oh W, Bauer CR, Korones SB, Shankaran S, Laptook AR, Stevenson DK, Papile LA, Poole WK: **Changes in pathogens causing early-onset sepsis in very-low-birth-weight infants.** *N Engl J Med* 2002, **25**(4):240–247.
11. Gastmeier P, Geffers C, Schwab F, Mitzner J, Oblader M, Ruden H: **Development of a surveillance system for nosocomial infections: the component for neonatal intensive care in Germany.** *J Hosp Infect* 2004, **57**:126–131.
12. Drioux L, Brossier F, Sougakoff W, Jarlier V: **Phenotypic detection of extended-spectrum β -lactamase production in Enterobacteriaceae: review and bench guide.** *Clin Microbiol Infect* 2008, **14**:90–103.
13. Stoll BJ, Hansen N, Fanaroff AA, Wright LL, Carlo WA, Ehrenkranz RA, Lemons JA, Donovan EF, Stark AR, Tyson JE, Oh W, Bauer CR, Korones SB, Shankaran S, Laptook AR, Stevenson DK, Papile LA, Poole WK: **Late-onset sepsis in very low birth weight neonates: the experience of the NICHD Neonatal Research Network.** *Pediatrics* 2002, **110**:285–291.
14. Gagliotti C, Balode A, Baquero F, Degener J, Grundmann H, Gür D, Jarlier V, Kahlmeter G, Momen J, Monnet DL, Rossolini GM, Suetens C, Weist K, Heuer O: **EARS-Net Participants (Disease Specific Contact Points for AMR). *Escherichia coli* and *Staphylococcus aureus*: bad news and good news from the European Antimicrobial Resistance Surveillance Network (EARS-Net, formerly EARSS), 2002 to 2009.** *Euro Surveill* 2011, **17**:19819. Erratum in: *Euro Surveill* 2011, **16**:19834.
15. Babazono A, Kitajima H, Nishimaki S, Nakamura T, Shiga S, Hayakawa M, Tanaka T, Sato K, Nakayama H, Ibara S, Une H, Doi H: **Risk factors for nosocomial infections in the neonatal intensive care unit by the Japanese National Infection Surveillance (JANIS).** *Acta Med Okayama* 2008, **62**(4):261–266.
16. Vergnano S, Menson E, Kenne N, Embleton N, Russell AB, Watts T, Robinson MJ, Collinson A, Heath PT: **Neonatal infections in England: the NeonIT surveillance network.** *Arch Dis Child Fetal Neonatal Ed* 2011, **96**:F9–F1.
17. Geffers C, Bearwolff S, Schwab F, Gastmeier P: **Incidence of healthcare-associated infections in high-risk neonates: results from the German surveillance system for very-low-birthweight infants.** *J Hosp Infect* 2008, **68**:214–221.
18. Wójkowska-Mach J, Borszewska-Kornacka M, Domańska J, Gadzinowski J, Gulczyńska E, Helwich E, Kordek A, Pawlik D, Szczapa J, Klamka J, Heczko PB: **Early-onset Infections of Very-low-birth-weight Infants in Polish Neonatal Intensive Care Units.** *Pediatr Infect Dis J* 2012, **31**(7):691–695.
19. Gaynes RP, Edwards JR, Jarvis WR, Culver DH, Tolson JS, Martone WJ: **Nosocomial infections among neonates in high-risk nurseries in the United States.** National Nosocomial Infections Surveillance System. *Pediatrics* 1996, **98**:357–361.
20. Lin CY, Hsu CH, Huang FY, Chang JH, Hung HY, Kao HA, Peng CC, Jim WT, Chi H, Chiu NC, Chang TY, Chen CY, Chen CP: **The changing face of early-onset neonatal sepsis after the implementation of a maternal group B Streptococcus screening and intrapartum prophylaxis policy—a study in one medical center.** *Pediatr Neonatol* 2011, **52**(2):78–84.
21. Shane AL, Stoll BJ: **Recent developments and current issues in the epidemiology, diagnosis, and management of bacterial and fungal neonatal sepsis.** *Am J Perinatol* 2013, **30**(2):131–141.
22. Millar M, Philpott A, Wilks M, Whitley A, Warwick S, Hennessy E, Coen P, Kempley S, Stacey F, Costeloe K: **Colonization and persistence of antibiotic-resistant Enterobacteriaceae strains in infants nursed in two**

- neonatal intensive care units in East London, United Kingdom. *J Clin Microbiol* 2008, **46**:560–567.
23. Shakil S, Akram M, Ali SM, Khan AU: Acquisition of extended-spectrum β -lactamase producing *Escherichia coli* strains in male and female infants admitted to a neonatal intensive care unit: molecular epidemiology and analysis of risk factors. *J Med Microbiol* 2010, **59**:948–954.
 24. Huang Y, Zhuang S, Du M: Risk factors of nosocomial infection with extended-spectrum β -lactamase-producing bacteria in a neonatal intensive care unit in China. *Infection* 2007, **35**:339–345.
 25. Bromiker R, Ernest N, Meir MB, Kaplan M, Hammerman C, Schimmel MS, Schlesinger Y: Correlation of bacterial type and antibiotic sensitivity with maternal antibiotic exposure in early-onset neonatal sepsis. *Neonatal* 2013, **103**:48–53.
 26. Benenson S, Levin PD, Block C, Adler A, Ergaz Z, Peleg O, Minster N, Gross I, Schaffer K, Moses AE, Cohen MJ: Continuous surveillance to reduce extended-spectrum β -lactamase *Klebsiella pneumoniae* colonization in the neonatal intensive care unit. *Neonatal* 2013, **103**:155–160.
 27. Denkel LA, Schwab F, Kola A, Leistner R, Garten L, von Weizsäcker K, Geffers C, Gastmeier P, Piening B: The mother as most important risk factor for colonization of very low birth weight (VLBW) infants with extended-spectrum β -lactamase-producing Enterobacteriaceae (ESBL-E). *J Antimicrob Chemother* 2014, **69**(8):2230–2237.
 28. Gastmeier P, Loui A, Stamm-Balderjahn S, Hansen S, Zuschneid I, Sohr D, Behnke M, Obladen M, Vonberg RP, Rüden H: Outbreaks in neonatal intensive care units - they are not like others. *Am J Infect Control* 2007, **35**(3):172–176.
 29. Chmielarczyk A, Pobiega M, Wojkowska-Mach J, Romaniszyn D, Adamski P, Heczko PB, Bulanda M: Molecular epidemiology, plasmid analysis, virulence and resistance of *Escherichia coli* isolated from neonatal intensive care units in Poland. *Diagn Microbiol Infect Dis* 2013, **76**(4):542–545.
 30. Bailey JK, Pinyon JL, Anantham S, Hall RM: Commensal *Escherichia coli* of healthy humans: A reservoir for antibiotic-resistance determinants. *J Med Microbiol* 2010, **59**(Pt 11):1331–1339.

doi:10.1186/1471-2431-14-274

Cite this article as: Chmielarczyk et al.: Mode of delivery and other risk factors for *Escherichia coli* infections in very low birth weight infants. *BMC Pediatrics* 2014 **14**:274.

Submit your next manuscript to BioMed Central and take full advantage of:

- Convenient online submission
- Thorough peer review
- No space constraints or color figure charges
- Immediate publication on acceptance
- Inclusion in PubMed, CAS, Scopus and Google Scholar
- Research which is freely available for redistribution

Submit your manuscript at
www.biomedcentral.com/submit

