

RESEARCH ARTICLE

Open Access

# Expression of miR-34c induces G2/M cell cycle arrest in breast cancer cells

Chandrani Achari<sup>†</sup>, Sofia Winslow<sup>†</sup>, Yvonne Ceder and Christer Larsson\*

## Abstract

**Background:** MicroRNA-34 is a family of three miRNAs that have been reported to function as tumor suppressor miRNAs and show decreased expression in various cancers. Here, we examine functions of miR-34c in basal-like breast cancer cells.

**Methods:** Data from The Cancer Genome Atlas (TCGA) were used for evaluation of expression in primary breast cancers. Cellular processes affected by miR-34c were investigated by thymidine incorporation, Annexin V-assays and cell cycle analysis using breast cancer cell lines. Effects on potential targets were analyzed with qPCR and Western blot.

**Results:** TCGA data revealed that miR-34c was expressed at lower levels in basal-like breast cancer tumors and low expression was associated with poor prognosis. Ectopic expression of miR-34c in basal-like breast cancer cell lines resulted in suppressed proliferation and increased cell death. Additionally, miR-34c influenced the cell cycle mainly by inducing an arrest in the G2/M phase. We found that expression levels of the known cell cycle-regulating miR-34 targets *CCND1*, *CDK4* and *CDK6*, were downregulated upon miR-34c expression in breast cancer cell lines. In addition, the levels of *CDC23*, an important mediator in mitotic progression, were suppressed following miR-34c expression, and siRNAs targeting *CDC23* mimicked the effect of miR-34c on G2/M arrest. However, protein levels of *PRKCA*, a predicted miR-34c target and a known regulator of breast cancer cell proliferation were not influenced by miR-34c.

**Conclusions:** Together, our results support the role of miR-34c as a tumor suppressor miRNA also in breast cancer.

**Keywords:** Breast cancer cells, miRNA-34c, CDC23, PKC $\alpha$ , Cell cycle arrest

## Background

MicroRNAs (miRNAs) are small (~22 nt) non-coding RNAs of importance for protein level regulation. They act by interacting with the 3'UTR of the target mRNA which may cause mRNA degradation or translational inhibition [1,2]. Several miRNAs have been associated with processes involved in cancer progression, e.g. proliferation, differentiation, apoptosis and tumorigenesis [3] and miRNAs have been classified as both oncogenic and tumor suppressive [4].

The miR-34 family consists of three homologous miRNAs located at chromosome 1 (miR-34a) and chromosome 11 (miR-34b/c) at positions frequently deleted in solid tumors, e.g. neuroblastoma, breast, prostate and lung

cancer [5-9]. Several reports have also pointed out a decreased expression of miR-34 in numerous malignancies, such as miR-34c in prostate cancer [10], miR-34a and -34c in colon [11] and lung cancer [12], miR-34a in neuroblastoma [13], and miR-34a and -34b in breast cancer [14,15]. Many studies report tumor suppressor-like effects of miR-34, for instance in ovarian cancer [16], prostate cancer [10], and neuroblastoma cells [5], putatively by regulating the expression of common miR-34 targets such as *CCND1* [17], *CCNE2* [18], *CDK4* [18,19], *CDK6* [17,20], *MET* [18,19,21,22] and *E2F3* [5,20].

A recent study with prostate cancer PC3 cells revealed that miR-34c expression also resulted in downregulation of protein kinase C $\alpha$  (PKC $\alpha$ ) mRNA [21]. In addition, five target prediction tools (MiRanda [23], DIANA-mT [24], miRWALK [25], PICTAR5 [26] and Targetscan [27]) predict *PRKCA* as a putative miR-34c target. From a breast

\* Correspondence: Christer.Larsson@med.lu.se

<sup>†</sup>Equal contributors

Department of Laboratory Medicine, Translational Cancer Research, Lund University, Medicon Village, Building 404:C3, 223 81 Lund, Sweden

cancer perspective this could be of relevance since PKC $\alpha$  expression has been reported to be important for optimal breast cancer cell proliferation [28,29], support a cancer stem cell-like breast cancer cell population [30] and to predict poorer survival [28].

Taken together, these facts led us to investigate putative suppressive effects of miR-34c on growth properties of breast cancer cells. We found that miR-34c overexpression both blocks the proliferation of cultured basal-like breast cancer cells and induces cell death, although this was not mediated by PKC $\alpha$  downregulation.

## Methods

### Cell Culture

All cell lines were obtained from American Type Culture Collection. MDA-MB-231, MDA-MB-468, BT-549 and T47D breast cancer cells were maintained in RPMI 1640 medium (HyClone, Thermo Scientific) supplemented with 10% fetal bovine serum (Saveen & Werner AB), 1 mM sodium pyruvate (HyClone, Thermo Scientific) and 100 IU/ml penicillin-streptomycin solution (HyClone, Thermo Scientific). The media for BT-549 cells were additionally supplemented with 0.01 mg/ml insulin (Novo Nordisk A/S) and for T47D with 1% glucose.

### Transfections

For miRNA transfections, cells were seeded at 50–60% confluency and grown in complete medium without antibiotics for 24 h. Cells were thereafter transfected for 5 hours with miRIDIAN microRNA Mimic (80 nM probe, Dharmacon, Lafayette, CO, USA) using 2  $\mu$ l/ml Lipofectamine 2000 (Invitrogen) in Opti-MEM 1 (Invitrogen) followed by 96 hour incubation in complete medium, roughly according to the manufacturer's recommendations. Control experiments were performed in parallel, transfecting cells with miRIDIAN microRNA Mimic Negative Control (Dharmacon). Transfection with 40 nM siRNA (Stealth RNAi, Invitrogen) was performed for 72 hours (sequences are listed in Table 1) according to the manufacturer's protocol.

### Thymidine incorporation

Cells were seeded in triplicates at a density of  $5 \times 10^4$  cells per well in 12-well plates and transiently transfected for 5 hours. Cells were incubated with 1  $\mu$ Ci/ml [ $^3$ H]-thymidine for 6 hours before harvesting the cells

**Table 1 siRNA nucleotides**

siRNA oligonucleotide	Sequence
Control 48% GC	UUACGGAUCGACUUAAGCCGUUGCA
CDC23 I	GCUGCCAGUGUACAUAUAAUUA
CDC23 II	UAUAUUUGAUGUAACACUGGGCAGC
CDC23 III	CCAAGCUCGAGAACUUGAUGGAUUU

with 10 mM EDTA. The amount of radioactivity was measured with a Tri-carb 2810TR liquid scintillation analyzer (Perkin Elmer).

### Cell cycle analysis

MDA-MB-231, MDA-MB-468 and BT-549 cells were seeded at a density of 150,000 cells per 35-mm cell culture dish and transiently transfected for 5 hours. Subsequently, cells were trypsinized and fixed in 70% ethanol for 20 minutes at  $-20^\circ\text{C}$ , washed in PBS, and incubated with a solution containing 3.5  $\mu$ M Tris- HCl pH 7.6, 10 mM NaCl, 50  $\mu$ g/ml propidium iodide (PI), 20  $\mu$ g/ml RNase, and 0.1% igepal CA-630 for 20 minutes on ice to label DNA. 10,000 events were acquired on the FL-2 channel for the PI signal. Sample acquisition and analyses were performed with CellQuest or FACSsuite software (BD Biosciences).

### Annexin V analysis

MDA-MB-231 and BT-549 cells were seeded at a density of 150,000 cells per 35-mm cell culture dish, and MDA-MB-468 cells were seeded at 200,000 cells per 35-mm cell culture dish and transfected for 5 hours. After 96 hour incubation in complete medium, floating cells, pooled with trypsinized adherent cells, were stained with Annexin V-allophycocyanin (APC; BD Pharmingen) according to the supplier's protocol, and the amount of bound Annexin V-APC was quantified with a FACSCalibur cytometer (BD Biosciences). 10,000 events were acquired on the FL-4 channel for the Annexin V-APC signal.

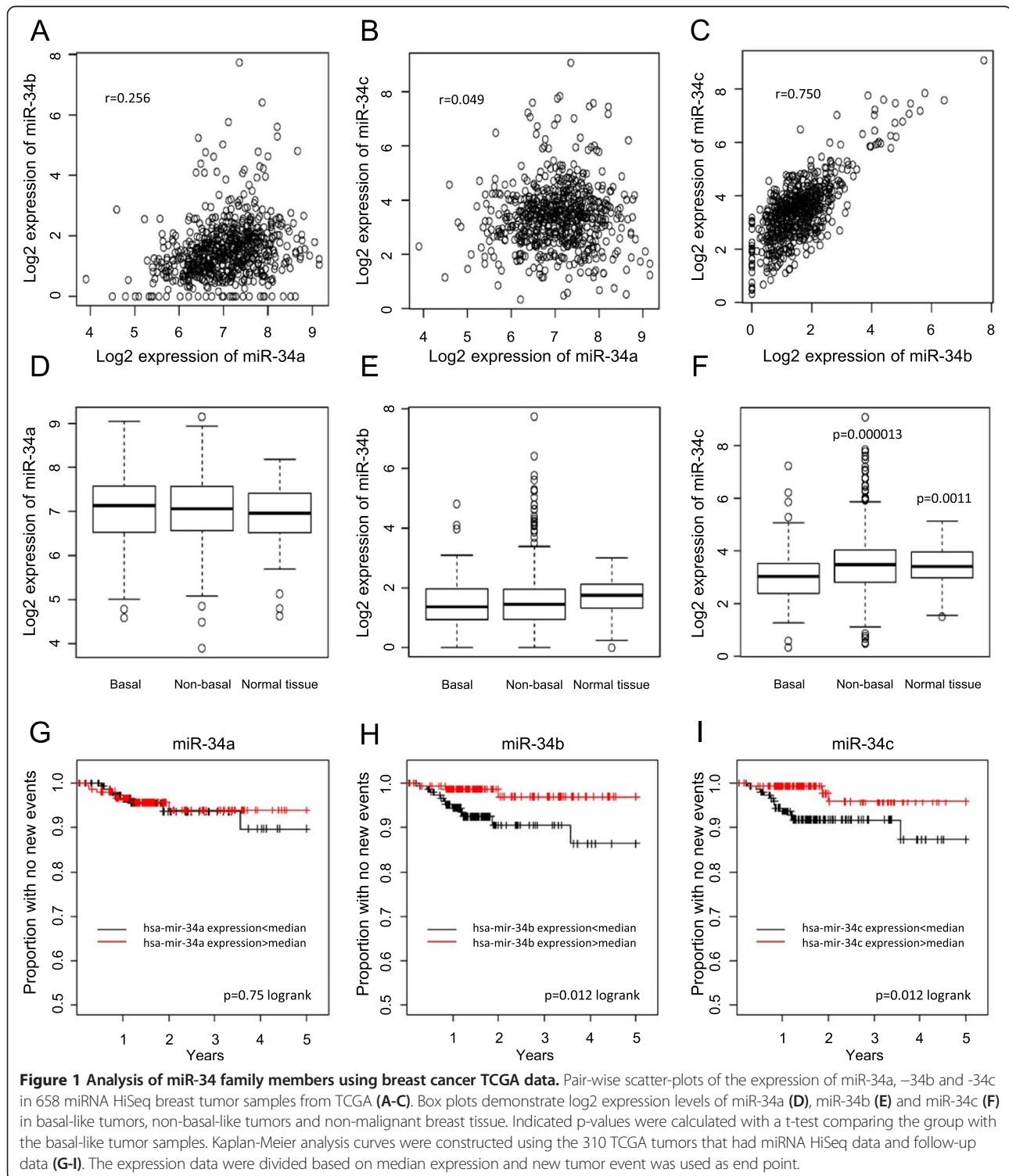
**Table 2 qPCR primers**

Primers for qPCR	Sequence 5' to 3a
<b>SDHA</b> forward	TGGGAACAAGAGGGCATCTG
<b>SDHA</b> reverse	CCACCACTGCATCAAATTCATG
<b>YWHAZ</b> forward	ACTTTTGGTACATTGTGGCTTCAA
<b>YWHAZ</b> reverse	CCGCCAGACAAACCAGTAT
<b>UBC</b> forward	ATTTGGGTCGCGGTTCTTG
<b>UBC</b> reverse	TGCCTTGACATTCTCGATGGT
<b>PRKCA</b> forward	AAACATCTCCACCCAAGACG
<b>PRKCA</b> reverse	AATCCCTCCCTGCTCACTCT
<b>CCND1</b> forward	CCCTCGGTGTCTACTTCAA
<b>CCND1</b> reverse	CTCTCGCACTTCTGTTCCT
<b>CDCK4</b> forward	TGTGGAGTGTGGCTGTATCTT
<b>CDCK4</b> reverse	GGTCGGCTTCAGAGTTTCC
<b>CDCK6</b> forward	TGGTGCCTCCTCTGTCTG
<b>CDCK6</b> reverse	CTGCCTGTCCCACTACTCC
<b>CDC23</b> forward	CGGAGTTGGCTTTCTCTCTC
<b>CDC23</b> reverse	CCTGGGCATCTCTCTCTGTA

### Real-time qPCR

Total RNA was extracted from MDA-MB-231, MDA-MB-468 and BT549 cells with the RNeasy kit (Qiagen), and potential DNA contamination was eliminated with the RQ1 RNase-Free DNase (Promega). Two micrograms of

total RNA was used for cDNA synthesis with MultiScribe Reverse Transcriptase (Applied Biosystems). The cDNA was thereafter amplified by qPCR for evaluation of relative mRNA expression levels in an Applied Biosystems 7300 real-time quantitative PCR system using the SYBR Green



PCR Master Mix (Applied Biosystems). The mRNA expression data were normalized to three reference genes (*SDHA*, *UBC* and *YWHAZ*). For relative quantification of gene expression, the comparative Ct method was applied. The sequences of primers are listed in Table 2.

For analysis of miR-34b/c expression levels, total RNA was extracted from MDA-MB-231, MDA-MB-468 and T47D cells with Trizol according to manufacturer's instructions (Invitrogen). Small RNAs were reversely transcribed with miRNA specific primers, quantified by the TaqMan MicroRNA assays (Applied Biosystems) and normalized to two reference genes (*RNU44* and *U47*).

### Western blot analysis

Cells were lysed in radioimmune precipitation assay buffer (10 Mm Tris-HCl (pH 7.2), 160 mM NaCl, 1% Triton X-100, 1% sodium deoxycholate, 0.1% SDS, 1 mM EDTA, and 1 mM EGTA) containing 40 µl/ml Complete protease inhibitor (Roche Applied Science) and incubated on ice for 30 min. Lysates were cleared by centrifugation at 14,000 × g for 10 min at 4°C, diluted in sample buffer containing β-mercaptoethanol, and boiled for 5 min. Protein concentration was determined by Bradford assay, equal amount of proteins were electrophoretically separated on either 10% or 12% NuPAGE Novex BisTris gels (Invitrogen) and transferred to polyvinylidene difluoride membranes (Millipore). Membranes were blocked with phosphate-buffered saline containing 5% nonfat milk and probed with antibodies to Cyclin D1 and PKCα (1:500; Santa Cruz Biotechnology), CDK4 (1:1000; Millipore), CDK6 (1:1000; Cell Signaling Technology), CDC23 (1:1000, Abcam) and actin (1:1000; MP Biomedicals). Proteins were visualized with horseradish peroxidase-labeled secondary antibody (Amersham Biosciences) using the SuperSignal system (Pierce) as substrate. Chemiluminescence was detected using a CCD camera (Fujifilm).

### Data analysis

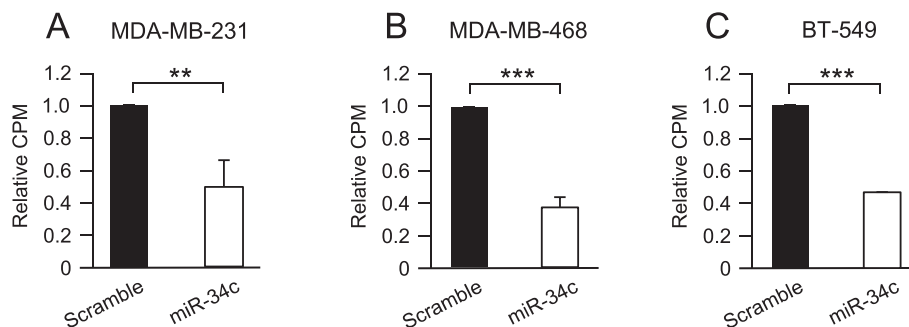
HiSeq miRNA expression data of 658 breast tumors and 86 normal breast tissue samples and mRNA data from corresponding samples were downloaded from the TCGA database (<http://cancergenome.nih.gov/>). The data used were downloaded in December 2013. The tumors were clustered based on mRNA expression data using the hclust function in R. Survival analyses were performed on the 310 breast tumors that had follow up data using the Survival package. The TCGA "New tumor event" variable (recurrence) defined as new tumor event after initial treatment was used as end point for survival analyses. Pairwise comparisons were evaluated with a t-test.

## Results

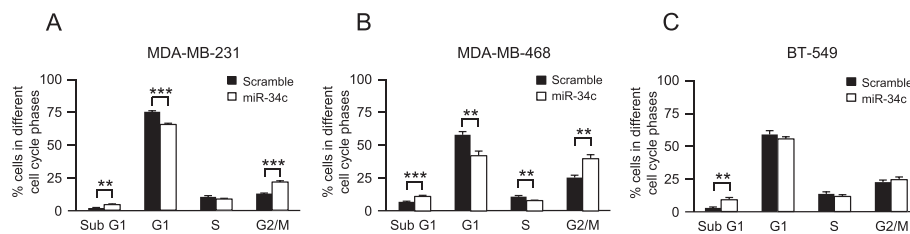
### Expression of miR-34 in breast cancer

To assess putative roles of miR-34 family members in breast cancer, miRNA HiSeq expression data from 658 tumors and 86 normal breast tissue samples from the TCGA (The Cancer Genome Atlas) database were used. There was a clear correlation between miR-34b and miR-34c levels, whereas neither of them displayed a strong correlation with miR-34a (Figure 1A-C). This likely reflects the fact that miR-34b and 34c are located at the same locus on chromosome 11q23 whereas miR-34a is located at 1p36. The TCGA tumors were clustered using mRNA data, which separated the tumors in two major groups which correspond to basal-like and non-basal-like tumors. For miR-34c, lower levels were seen in basal-like tumors compared both to non-basal-like tumors and to normal breast tissue, whereas no substantial difference was observed for miR-34a or miR-34b (Figure 1D-F).

The miR-34 expression data from the 310 tumors with follow-up information were split into two groups based on the median of the expression and survival curves with new tumor event as end point were generated (Figure 1G-I). No obvious difference between tumors



**Figure 2** Effect of miR-34c on proliferation of breast cancer cells. MDA-MB-231 (A), MDA-MB-468 (B) and BT-549 (C) breast cancer cells were transiently transfected with either a miR-34c mimic or negative control for 96 h and then subjected to thymidine incubation for 6 hours. Data (mean ± SEM from three separate experiments) are expressed as [<sup>3</sup>H]-thymidine incorporation related to control cells. Asterisks indicate statistically significant differences (\* p < 0.05, \*\* p < 0.01, \*\*\* p < 0.001, Student's t-test) compared to control cells.



**Figure 3 Effect of miR-34c on cell cycle distribution of breast cancer cells.** Following transfection of MDA-MB-231 (A), MDA-MB-468 (B) and BT-549 (C) breast cancer cells with miR-34c mimic or negative control for 96 h, nuclei were stained with propidium iodide solution and analyzed for DNA content by flow cytometry. Data (mean  $\pm$  SEM, n = 5) represent percentage cells in different phases of the cell cycle with miR-34c related to scramble treatment. Asterisks indicate statistically significant differences (\* p < 0.05, \*\* p < 0.01, \*\*\* p < 0.001, Student's t-test) compared to control cells.

expressing high or low levels of miR-34a could be seen. However, for both miR-34b and miR-34c, there was a difference in new tumor events between the low- and high-expressing groups, with more new tumor events in the group with miR-34 expression below median.

The levels of miR-34b and miR-34c were analyzed in two ER-negative (MDA-MB-231 and MDA-MB-468) and one ER-positive (T47D) cell line. In the ER-negative MDA-MB-468 cell line the levels were barely detected whereas the magnitude of expression was similar in the other cell lines (Additional file 1).

#### Expression of miR-34c decreases cell proliferation in breast cancer cells

Only miR-34c was expressed at lower levels in basal-like tumors. To investigate putative effects of miR-34c on breast cancer cell growth, three basal-like breast cancer cell lines, MDA-MB-231, MDA-MB-468 and BT-549, were transfected with miR-34c mimic or a scramble control oligonucleotide followed by [<sup>3</sup>H]-thymidine incorporation. In concordance with effects in other cell types [10,16,18], a suppressed proliferation with around

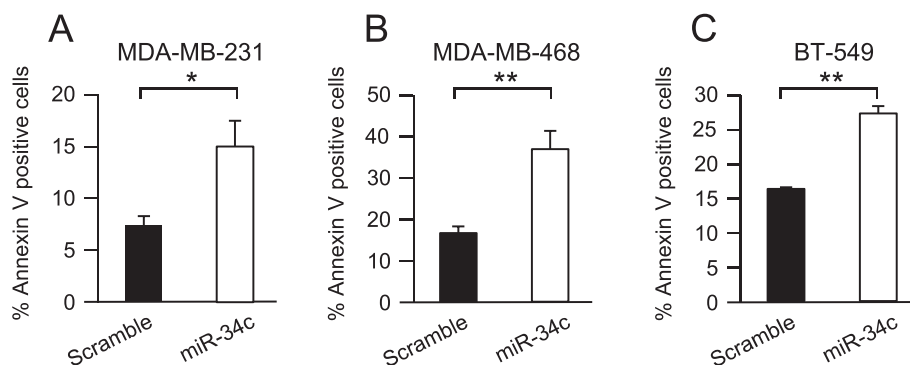
50% was observed following miR-34c transfection in all evaluated cell lines (Figure 2A-C).

#### Effect of miR-34c on cell cycle distribution

The suppressed [<sup>3</sup>H]-thymidine incorporation suggests that miR-34c may influence the cell cycle. The cell cycle distribution was thus analyzed by FACS following nuclear staining with propidium iodide (Additional file 2). Ectopic expression of miR-34c induced an accumulation of cells in the G2/M phase compared to control in MDA-MB-231 (Figure 3A) and MDA-MB-468 (Figure 3B) cells. A similar tendency was observed for BT-549 cells (Figure 3C). In all three cell lines a significant increase in sub-G1 phase was detected along with a reduction of cells in G1 phase (Figure 3A-C), but the G1-arrest that has been reported for other cell types [18,31] was not detected in the breast cancer cells.

#### Expression of miR-34c leads to increased cell death in breast cancer cells

The increase in nuclei in sub-G1 phase induced by miR-34c suggests that high expression of miR-34c can



**Figure 4 Effect of miR-34c on apoptosis of breast cancer cells.** MDA-MB-231 (A), MDA-MB-468 (B) and BT-549 (C) breast cancer cells were transiently transfected with either miR-34c mimic or negative control for 96 h. After 96 h, cells were subjected to Annexin V-APC staining and flow cytometry analysis. Data (mean  $\pm$  SEM, n = 2-3) represent percent AnnexinV-positive cells with miR-34c related to scramble treatment. Asterisks indicate statistically significant differences (\* p < 0.05, Student's t-test) compared to control cells.

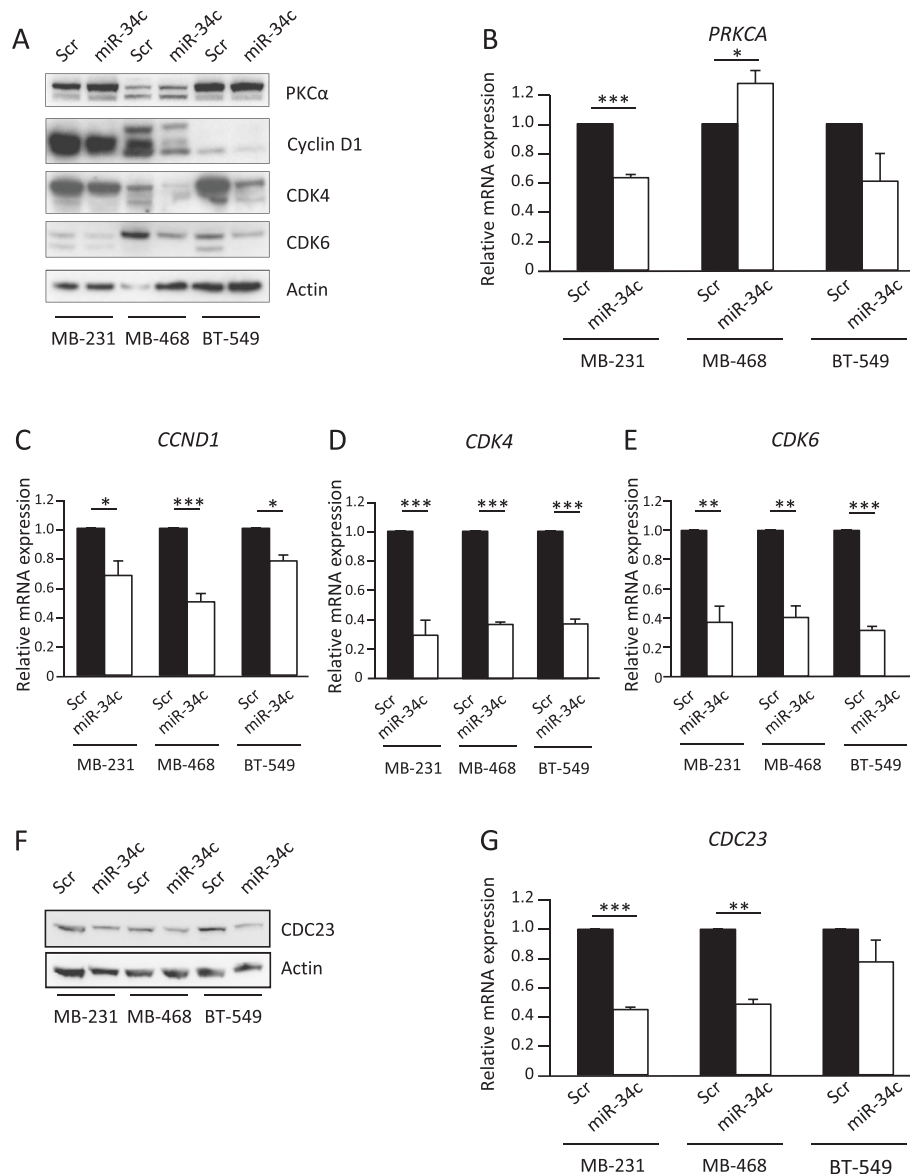
lead to induction of cell death. This was therefore analyzed with an Annexin V assay. In all cell lines, the number of Annexin V-positive cells was roughly doubled, indicating an increased cell death, following miR-34c overexpression (Figure 4 A-C).

#### Evaluation of miR-34c targets in breast cancer

As mentioned in the introduction, *PRKCA* is a predicted miR-34c target. Since PKC $\alpha$  is important for optimal breast cancer cell proliferation [28-30] we analyzed the effects of miR-34c on PKC $\alpha$  expression. We could not

detect any effects on the protein levels (Figure 5A) despite the observation that *PRKCA* mRNA levels in MDA-MB-231 and MDA-MB-468 were affected by miR-34c (Figure 5B). This suggests that PKC $\alpha$  downregulation is not a mediator of the effects seen by miR-34c in breast cancer cells.

To obtain some insight into putative mediators of the miR-34c effect, we next analyzed mRNA and protein levels of the cell cycle regulators cyclin D1, CDK4 and CDK6, which have been identified as targets of miR-34c and its relatives [17,18,32]. In line with this, we found



**Figure 5 Evaluation of miR-34c targets.** Following transfection of MDA-MB-231, MDA-MB-468 and BT-549 (breast cancer cells with miR-34c mimic or negative control for 96 h, cells were analyzed for expression of *PRKCA* (B), *CCND1* (C), *CDK4* (D), *CDK6* (E) or *CDC23* (G) mRNA with real-time quantitative PCR or for protein expression with Western blot (A and F). Data represent mean  $\pm$  SEM from 2-3 independent experiments and the blots shown are representative of three independent experiments. Asterisks indicate statistically significant differences (\*  $p < 0.05$ , \*\*  $p < 0.01$ , \*\*\*  $p < 0.001$ , Student's *t*-test) compared to control cells.

that miR-34c overexpression resulted in decreased protein levels of cyclin D1, CDK4 and CDK6 in all cell lines (Figure 5A). A significant decrease in their mRNA levels was also detected (Figure 5C-E).

Cyclin D1, CDK4, and CDK6 are mainly considered to be important in the G1/S transition but the main effect observed following miR-34c treatment was actually an arrest in G2/M. We thus analyzed the protein and mRNA levels of CDC23 which is an important regulator of mitotic progression. *CDC23* mRNA has been shown to be pulled-down as well as downregulated by miR-34a in colorectal cancer cells [33] and downregulated by miR-34c in prostate cancer cells [21]. In addition, *CDC23* is predicted to contain a putative miR-34c binding site in the 3'UTR by five target prediction tools (MiRanda [23], DIANAmT [24], miRWALK [25], PICTAR5 [26] and TargetsCan [27]), indicating that *CDC23* might be a direct target of miR-34c. A decrease both in protein and mRNA levels of *CDC23* was indeed observed in all cell lines following miR-34c expression (Figure 5F-G) suggesting that suppression of *CDC23* may mediate some miR-34c effects, either as a direct target of miR-34c or via an indirect mechanism.

To analyse whether suppression of *CDC23* levels is sufficient to elicit some miR-34c effects, MDA-MB-231 cells were treated with siRNA targeting *CDC23* mRNA (Figure 6). This resulted in fewer cells in the G1 and increases in the G2/M phase. However, no effect on cells in the sub-G1 phase could be seen.

## Discussion

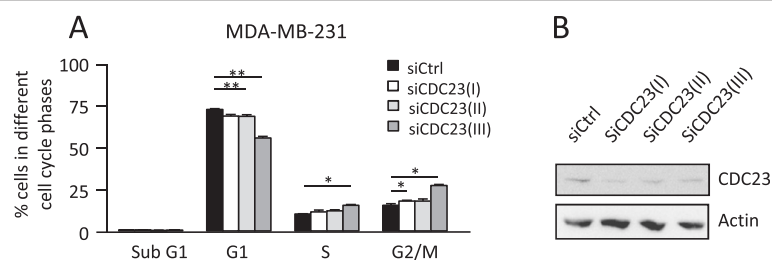
In cancers, dysregulation of miRNA is a common feature that can affect downstream targets and further influence tumorigenic events such as proliferation, metastasis and apoptosis [34]. Family members of miR-34 have been reported to be downregulated in several different cancers, including prostate [10], neuroblastoma [13], colon [11], lung [12] and breast [14,15]. In addition, epigenetic silencing through CpG methylation [35,36] and homozygous deletions affecting the miR-34a and miR-34b/c loci (1p36

and 11q23, respectively) has been identified in neuroblastoma and other tumors [5,7,37-39].

Our analyses of TCGA data indicate that low levels of miR-34b and/or miR-34c may predict a worse outcome of breast cancer. However, the data are not in line with previous reports indicating that miR-34a and miR-34b are downregulated in breast cancer [40-42]. It was only for miR-34c in basal-like breast cancers that lower expression levels could be seen. This indicates that miR-34c may be the most relevant miR-34 family member to overexpress in basal-like breast cancer cells.

In this study, we have identified an anti-proliferative and pro-apoptotic effect by miR-34c in basal-like breast cancer cells, in concordance with reports from studies in other cancers [16,21]. Previous studies have pointed out a role for miR-34a [13,18,35,43-45], and in some cases for miR-34c [18,31], in suppression of the cell cycle, mainly by induction of G1 cell cycle arrest. Our data rather indicate that miR-34c induced a G2/M arrest in breast cancer cells. This is more in line with the miR-34a-promoted mitotic catastrophe and G2/M arrest in irradiated glioblastoma cells [46]. One member of the anaphase-promoting complex (APC), *CDC23*, has been reported to be a target of miR-34a [33] and show a decreased mRNA expression in response to miR-34c in prostate cancer cells [21]. In our analysis we detect a significant decrease of *CDC23* both at mRNA and protein levels in response to miR-34c expression. *CDC23* may be a mediator of miR-34c effects, but more specific experiments are needed to settle *CDC23* as a direct miR-34c target. The decrease in G1 and increase in G2/M could be replicated by down regulation of *CDC23* supporting the hypothesis that downregulation of *CDC23* may mediate some of the observed miR-34c effects. However, there was no effect on cells in the sub-G1 phase suggesting that miR-34c-induced cell death may be mediated by other mechanisms.

PKC $\alpha$  protein levels were not influenced by miR-34c and a downregulation of PKC $\alpha$  is therefore conceivably not involved in the observed effects. However, the *PRKCA* mRNA levels were affected, albeit in different directions



**Figure 6 Effects of *CDC23* down regulation on cell cycle distribution.** MDA-MB-231 cells were treated for 72 h with three separate siRNAs targeting *CDC23*. Thereafter the cell cycle distribution was analyzed with flow cytometry (**A**) and *CDC23* protein levels were analyzed with Western blot (**B**). The data in A are mean  $\pm$  SEM from three separate experiments. Asterisks indicate statistically significant differences (\*  $p < 0.05$ , \*\*\*  $p < 0.001$ , paired  $t$ -test) compared to control cells.

depending on cell line. The diverging effects on *PRKCA* mRNA levels suggest that it is less likely a direct target of miR-34c.

We also observed that miR-34c induces death in breast cancer cells. This could be a consequence of a G2/M arrest or involve other mechanisms, such as suppression of the pro-survival factors BCL2 [13,32] or SIRT1 [47]. The fact that siCDC23 induces a G2/M arrest, but no increasing in sub-G1 phase, indicates that the effects may be separate. Induction of cell death actually seems to be a more general miR-34 effect since they have been shown to lead to increased cell death in several cell types [5,10,48]. Along with the growth-suppressing and cell death-inducing effects shown in this study, miR-34c has been shown to reduce the migratory and self-renewing capacity of breast tumor-initiating cells [49] and to inhibit metastatic invasion in vivo [15]. Our study further indicates that miR-34c has tumor-suppressive effects in breast cancer and, together with other reports, this implies miR-34c to be a potential mediator for novel miRNA replacement therapies [50].

## Conclusions

In conclusion, we have detected a suppressive role for miR-34c in breast cancer cell growth and a G2/M cell cycle arrest in response to miR-34c induction. We also identified *CDC23* as a miR-34c-regulated target that could be responsible for the miR-34c-induced cell cycle arrest.

## Additional files

**Additional file 1: Expression levels of miR-34b and miR-34c in breast cancer cell lines.** MDA-MB-231, MDA-MB-468 and T47D cells were analyzed for basal expression levels of miR-34b (A) and miR-34c (B). The data are mean  $\pm$  SEM from three separate experiments.

**Additional file 2: Effect of miR-34c on cell cycle distribution.** Representative cell cycle profiles of breast cancer cell lines transfected with miR-34c mimic or negative control. Quantifications are given in Figure 3.

## Abbreviations

miR: microRNA; TCGA: The Cancer Genome Atlas; 3'UTR: 3'untranslated region; CCND1: Cyclin D1; CDK4: Cyclin-dependent kinase 4; CDK6: Cyclin-dependent kinase 6; CDC23: Cell division cycle 23; PRKCA: Protein kinase Ca.

## Competing interests

The authors declare that they have no competing interests.

## Authors' contributions

CA and SW contributed to the experimental design, performed the experiments and assembled the drafts of the manuscript. YC participated in interpretative discussions and helped draft the manuscript. CL conceived the study, participated in the design of the experimental work, performed the statistical analyses and helped draft the manuscript. All authors read and approved the final manuscript.

## Acknowledgements

This work was supported by grants from the Swedish Research Council, the Swedish Cancer Society, the Gunnar Nilsson, Ollie and Elof Ericsson, and Kock foundations, and Malmö University Hospital research funds. The results are in whole or part based upon data generated by the TCGA Research Network: http://cancergenome.nih.gov/.

Received: 3 February 2014 Accepted: 17 July 2014  
Published: 26 July 2014

## References

1. Bartel DP: MicroRNAs: target recognition and regulatory functions. *Cell* 2009, **136**:215–233.
2. Guo H, Ingolia NT, Weissman JS, Bartel DP: Mammalian microRNAs predominantly act to decrease target mRNA levels. *Nature* 2010, **466**:835–840.
3. Cheng AM, Byrom MW, Shelton J, Ford LP: Antisense inhibition of human miRNAs and indications for an involvement of miRNA in cell growth and apoptosis. *Nucleic Acids Res* 2005, **33**:1290–1297.
4. Kloosterman WP, Plasterk RH: The diverse functions of microRNAs in animal development and disease. *Dev Cell* 2006, **11**:441–450.
5. Welch C, Chen Y, Stallings RL: MicroRNA-34a functions as a potential tumor suppressor by inducing apoptosis in neuroblastoma cells. *Oncogene* 2007, **26**:5017–5022.
6. Bagchi A, Mills AA: The quest for the 1p36 tumor suppressor. *Cancer Res* 2008, **68**:2551–2556.
7. Ellsworth RE, Vertrees A, Love B, Hooke JA, Ellsworth DL, Shriver CD: Chromosomal alterations associated with the transition from in situ to invasive breast cancer. *Ann Surg Oncol* 2008, **15**:2519–2525.
8. Dahiya R, McCarville J, Lee C, Hu W, Kaur G, Carroll P, Deng G: Deletion of chromosome 11p15, p12, q22, q23-24 loci in human prostate cancer. *Int J Cancer* 1997, **72**:283–288.
9. Rasio D, Negrini M, Manenti G, Dragani TA, Croce CM: Loss of heterozygosity at chromosome 11q in lung adenocarcinoma: identification of three independent regions. *Cancer Res* 1995, **55**:3988–3991.
10. Hagman Z, Larne O, Edsjo A, Bjartell A, Ehrnstrom RA, Ulmert D, Lilja H, Ceder Y: miR-34c is downregulated in prostate cancer and exerts tumor suppressive functions. *Int J Cancer* 2010, **127**:2768–2776.
11. Roy S, Levi E, Majumdar AP, Sarkar FH: Expression of miR-34 is lost in colon cancer which can be re-expressed by a novel agent CDF. *J Hematol Oncol* 2012, **5**:58.
12. Garofalo M, Jeon YJ, Nuovo GJ, Middleton J, Secchiero P, Joshi P, Alder H, Nazaryan N, Di Leva G, Romano G, Crawford M, Nana-Sinkam P, Croce CM: MiR-34a/c-Dependent PDGFR-alpha/beta Downregulation Inhibits Tumorigenesis and Enhances TRAIL-Induced Apoptosis in Lung Cancer. *PLoS One* 2013, **8**:e67581.
13. Cole KA, Attiyeh EF, Mosse YP, Laquaglia MJ, Diskin SJ, Brodeur GM, Maris JM: A functional screen identifies miR-34a as a candidate neuroblastoma tumor suppressor gene. *Mol Cancer Res* 2008, **6**:735–742.
14. Javeri A, Ghaffarpour M, Taha MF, Houshmand M: Downregulation of miR-34a in breast tumors is not associated with either p53 mutations or promoter hypermethylation while it correlates with metastasis. *Med Oncol* 2013, **30**:413.
15. Yang S, Li Y, Gao J, Zhang T, Li S, Luo A, Chen H, Ding F, Wang X, Liu Z: MicroRNA-34 suppresses breast cancer invasion and metastasis by directly targeting Fra-1. *Oncogene* 2013, **32**:4294–4303.
16. Corney DC, Flesken-Nikitin A, Godwin AK, Wang W, Nikitin AY: MicroRNA-34b and MicroRNA-34c are targets of p53 and cooperate in control of cell proliferation and adhesion-independent growth. *Cancer Res* 2007, **67**:8433–8438.
17. Sun F, Fu H, Liu Q, Tie Y, Zhu J, Xing R, Sun Z, Zheng X: Downregulation of CCND1 and CDK6 by miR-34a induces cell cycle arrest. *FEBS Lett* 2008, **582**:1564–1568.
18. He L, He X, Lim LP, de Stanchina E, Xuan Z, Liang Y, Xue W, Zender L, Magnus J, Ridzon D, Jackson AL, Linsley PS, Chen C, Lowe SW, Cleary MA, Hannon GJ: A microRNA component of the p53 tumour suppressor network. *Nature* 2007, **447**:1130–1134.
19. Toyota M, Suzuki H, Sasaki Y, Maruyama R, Imai K, Shinomura Y, Tokino T: Epigenetic silencing of microRNA-34b/c and B-cell translocation gene 4 is associated with CpG island methylation in colorectal cancer. *Cancer Res* 2008, **68**:4123–4132.
20. Lujambio A, Calin GA, Villanueva A, Ropero S, Sanchez-Cespedes M, Blanco D, Montuenga LM, Rossi S, Nicoloso MS, Faller WJ, Gallagher WM, Eccles SA, Croce CM, Esteller M: A microRNA DNA methylation signature for human cancer metastasis. *Proc Natl Acad Sci U S A* 2008, **105**:13556–13561.



21. Hagman Z, Hafliadottir BS, Ansari M, Persson M, Bjartell A, Edsjo A, Ceder Y: **The tumour suppressor miR-34c targets MET in prostate cancer cells.** *Br J Cancer* 2013, **109**:1271–1278.
22. Migliore C, Petrelli A, Ghiso E, Corso S, Capparuccia L, Eramo A, Comoglio PM, Giordano S: **MicroRNAs impair MET-mediated invasive growth.** *Cancer Res* 2008, **68**:10128–10136.
23. Enright AJ, John B, Gaul U, Tuschl T, Sander C, Marks DS: **MicroRNA targets in *Drosophila*.** *Genome Biol* 2003, **5**:R1.
24. Maragkakis M, Reczko M, Simossis VA, Alexiou P, Papadopoulos GL, Dalamagas T, Giannopoulos G, Goumas G, Koukis E, Kourtis K, Vergoulis T, Koziris N, Sellis T, Tsanakas P, Hatzigeorgiou AG: **DIANA-microT web server: elucidating microRNA functions through target prediction.** *Nucleic Acids Res* 2009, **37**:W273–W276.
25. Dweep H, Sticht C, Pandey P, Gretz N: **miRWalk-database: prediction of possible miRNA binding sites by "walking" the genes of three genomes.** *J Biomed Inform* 2011, **44**:839–847.
26. Krek A, Grun D, Poy MN, Wolf R, Rosenberg L, Epstein EJ, MacMenamin P, da Piedade I, Gunsalus KC, Stoffel M, Rajewsky N: **Combinatorial microRNA target predictions.** *Nat Genet* 2005, **37**:495–500.
27. Lewis BP, Burge CB, Bartel DP: **Conserved seed pairing, often flanked by adenosines, indicates that thousands of human genes are microRNA targets.** *Cell* 2005, **120**:15–20.
28. Lonne GK, Cornmark L, Zahirovic IO, Landberg G, Jirstrom K, Larsson C: **PKCalpha expression is a marker for breast cancer aggressiveness.** *Mol Cancer* 2010, **9**:76.
29. Ways DK, Kukoly CA, deVente J, Hooker JL, Bryant WO, Posekany KJ, Fletcher DJ, Cook PP, Parker PJ: **MCF-7 breast cancer cells transfected with protein kinase C-alpha exhibit altered expression of other protein kinase C isoforms and display a more aggressive neoplastic phenotype.** *J Clin Invest* 1995, **95**:1906–1915.
30. Tam WL, Lu H, Buikhuisen J, Soh BS, Lim E, Reinhardt F, Wu ZJ, Krall JA, Brierie B, Guo W, Chen X, Liu XS, Brown M, Lim B, Weinberg RA: **Protein Kinase C alpha Is a Central Signaling Node and Therapeutic Target for Breast Cancer Stem Cells.** *Cancer Cell* 2013, **24**:347–364.
31. Cannell IG, Kong YW, Johnston SJ, Chen ML, Collins HM, Dobbyn HC, Elia A, Kress TR, Dickens M, Clemens MJ, Heery DM, Gaestel M, Willis AE, Bushell M: **p38 MAPK/MK2-mediated induction of miR-34c following DNA damage prevents Myc-dependent DNA replication.** *Proc Natl Acad Sci U S A* 2010, **107**:5375–5380.
32. Bommer GT, Gerin I, Feng Y, Kaczorowski AJ, Kuick R, Love RE, Zhai Y, Giordano TJ, Qin ZS, Moore BB, MacDougald OA, Cho KR, Fearon ER: **p53-mediated activation of miRNA34 candidate tumor-suppressor genes.** *Curr Biol* 2007, **17**:1298–1307.
33. Lal A, Thomas MP, Altschuler G, Navarro F, O'Day E, Li XL, Concepcion C, Han YC, Thiery J, Rajani DK, Deutsch A, Hofmann O, Ventura A, Hide W, Lieberman J: **Capture of microRNA-bound mRNAs identifies the tumor suppressor miR-34a as a regulator of growth factor signaling.** *PLoS Genet* 2011, **7**:e1002363.
34. Di Leva G, Garofalo M, Croce CM: **MicroRNAs in Cancer.** *Annu Rev Pathol* 2013, **9**:287–314.
35. Lodygin D, Tarasov V, Epanchintsev A, Berking C, Knyazeva T, Korner H, Knyazev P, Diebold J, Hermeking H: **Inactivation of miR-34a by aberrant CpG methylation in multiple types of cancer.** *Cell Cycle* 2008, **7**:2591–2600.
36. Vrba L, Munoz-Rodriguez JL, Stampfer MR, Futscher BW: **miRNA gene promoters are frequent targets of aberrant DNA methylation in human breast cancer.** *PLoS One* 2013, **8**:e54398.
37. Henrich KO, Schwab M, Westermann F: **1p36 tumor suppression—a matter of dosage?** *Cancer Res* 2012, **72**:6079–6088.
38. Hampton GM, Mannermaa A, Winqvist R, Alavaikko M, Blanco G, Taskinen PJ, Kiviniemi H, Newsham I, Cavenee WK, Evans GA: **Loss of heterozygosity in sporadic human breast carcinoma: a common region between 11q22 and 11q23.3.** *Cancer Res* 1994, **54**:4586–4589.
39. Pulido HA, Fakrudin MJ, Chatterjee A, Esplin ED, Beleno N, Martinez G, Posso H, Evans GA, Murty VV: **Identification of a 6-cM minimal deletion at 11q23.1-23.2 and exclusion of PPP2R1B gene as a deletion target in cervical cancer.** *Cancer Res* 2000, **60**:6677–6682.
40. Li L, Yuan L, Luo J, Gao J, Guo J, Xie X: **MIR-34a inhibits proliferation and migration of breast cancer through down-regulation of Bcl-2 and SIRT1.** *Clin Exp Med* 2013, **13**:109–117.
41. Hui C, Yujie F, Lijia Y, Long Y, Hongxia X, Yong Z, Jundong Z, Qianyong Z, Mantian M: **MicroRNA-34a and microRNA-21 play roles in the chemopreventive effects of 3,6-dihydroxyflavone on 1-methyl-1-nitrosourea-induced breast carcinogenesis.** *Breast Cancer Res* 2012, **14**:R80.
42. Lee YM, Lee JY, Ho CC, Hong QS, Yu SL, Tzeng CR, Yang PC, Chen HW: **miRNA-34b as a tumor suppressor in estrogen-dependent growth of breast cancer cells.** *Breast Cancer Res* 2011, **13**:R116.
43. Tarasov V, Jung P, Verdoodt B, Lodygin D, Epanchintsev A, Menses A, Meister G, Hermeking H: **Differential regulation of microRNAs by p53 revealed by massively parallel sequencing: miR-34a is a p53 target that induces apoptosis and G1-arrest.** *Cell Cycle* 2007, **6**:1586–1593.
44. Li Y, Guessous F, Zhang Y, Dipierro C, Kefas B, Johnson E, Marcinkiewicz L, Jiang J, Yang Y, Schmittgen TD, Lopes B, Schiff D, Purob B, Abounader R: **MicroRNA-34a inhibits glioblastoma growth by targeting multiple oncogenes.** *Cancer Res* 2009, **69**:7569–7576.
45. Yin D, Ogawa S, Kawamata N, Leiter A, Ham M, Li D, Doan NB, Said JW, Black KL, Phillip Koeffler H: **miR-34a functions as a tumor suppressor modulating EGFR in glioblastoma multiforme.** *Oncogene* 2013, **32**:1155–1163.
46. Kofman AV, Kim J, Park SY, Dupart E, Letson C, Bao Y, Ding K, Chen Q, Schiff D, Larner J, Abounader R: **microRNA-34a promotes DNA damage and mitotic catastrophe.** *Cell Cycle* 2013, **12**:3500–3511.
47. Yamakuchi M, Ferlito M, Lowenstein CJ: **miR-34a repression of SIRT1 regulates apoptosis.** *Proc Natl Acad Sci U S A* 2008, **105**:13421–13426.
48. Liang X, Zhou D, Wei C, Luo H, Liu J, Fu R, Cui S: **MicroRNA-34c enhances murine male germ cell apoptosis through targeting ATF1.** *PLoS One* 2012, **7**:e33861.
49. Yu F, Jiao Y, Zhu Y, Wang Y, Zhu J, Cui X, Liu Y, He Y, Park EY, Zhang H, Lv X, Ma K, Su F, Park JH, Song E: **MicroRNA 34c gene down-regulation via DNA methylation promotes self-renewal and epithelial-mesenchymal transition in breast tumor-initiating cells.** *J Biol Chem* 2012, **287**:465–473.
50. Bader AG: **miR-34 - a microRNA replacement therapy is headed to the clinic.** *Front Genet* 2012, **3**:120.

doi:10.1186/1471-2407-14-538

**Cite this article as:** Achari et al.: Expression of miR-34c induces G2/M cell cycle arrest in breast cancer cells. *BMC Cancer* 2014 **14**:538.

**Submit your next manuscript to BioMed Central and take full advantage of:**

- Convenient online submission
- Thorough peer review
- No space constraints or color figure charges
- Immediate publication on acceptance
- Inclusion in PubMed, CAS, Scopus and Google Scholar
- Research which is freely available for redistribution

Submit your manuscript at  
www.biomedcentral.com/submit

