

Neth Heart J (2019) 27:281  
<https://doi.org/10.1007/s12471-019-1275-9>



## A young man with exertional chest discomfort

L. E. Lezcano Gort · B. Roque Rodríguez · M. R. Porro Fernández

Published online: 11 April 2019  
 © The Author(s) 2019

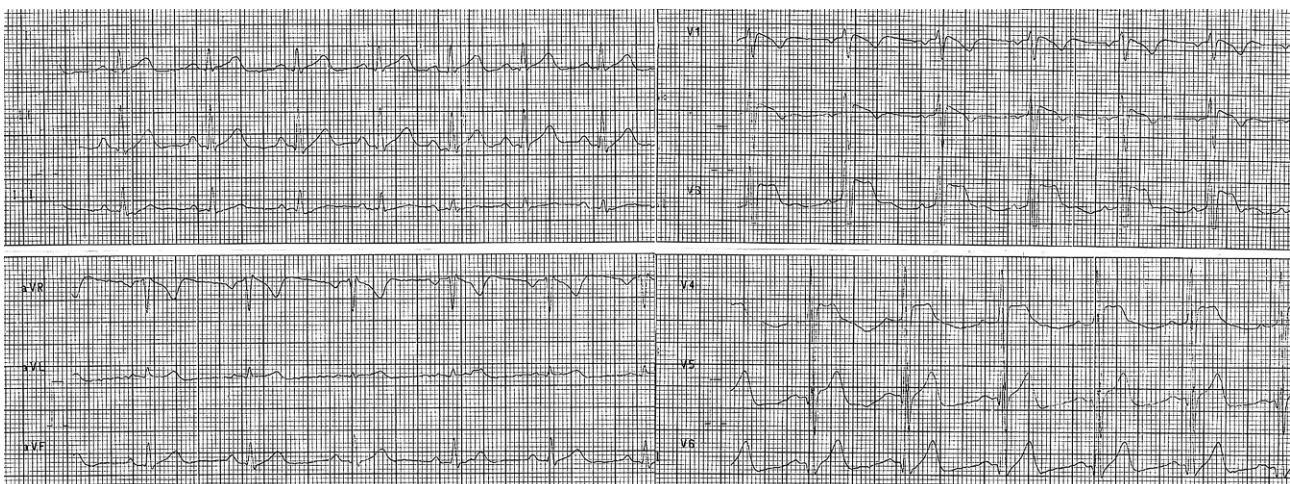
In this case we present a 43-year-old athletic male, nonprofessional cyclist with unremarkable medical history. He had been admitted to the emergency department because of chest discomfort, dizziness, heavy sweating and nausea after cycling 40 km in extreme heat (local temperature 41.5 degrees Celsius). Physical examination revealed a Glasgow Coma Scale score of 15, and he was haemodynamically stable. The laboratory results showed: creatine kinase 870 IU/l, creatine kinase-MB 12 IU/l, troponin T 16 ng/ml, and creatinine 1.6 mg/dl. Out-of-hospital electrocardiogram taken at first medical contact is shown in Fig. 1.

1. What is your diagnosis?
2. What is the most likely mechanism and the suggested therapy?

### Answer

You will find the answer elsewhere in this issue.

**Open Access** This article is distributed under the terms of the Creative Commons Attribution 4.0 International License (<http://creativecommons.org/licenses/by/4.0/>), which permits unrestricted use, distribution, and reproduction in any medium, provided you give appropriate credit to the original author(s) and the source, provide a link to the Creative Commons license, and indicate if changes were made.



**Fig. 1** Out-of-hospital electrocardiogram at first medical contact

L. E. Lezcano Gort (✉) · B. Roque Rodríguez · M. R. Porro Fernández  
 Department of Cardiology, San Pedro de Alcántara  
 University Hospital, Cáceres, Spain  
[lezcanogort@gmail.com](mailto:lezcanogort@gmail.com)

