



Correction to: Seismic performance of full-scale RC columns containing high proportion recycled aggregate

Ilyas Saribas¹ · Caglar Goksu² · Ergun Binbir² · Alper Ilki²

Published online: 19 September 2019
© Springer Nature B.V. 2019

Correction to: Bulletin of Earthquake Engineering <https://doi.org/10.1007/s10518-019-00687-0>

This erratum is published due to vendor overlooked corrections related to axis of two figures 9 and 13 denoted as m instead of mm and needs to be updated.

- (a) unit of horizontal axis; from 1/m to 1/mm in Fig. 9
- (b) unit of vertical axis; from mm/mm to 1/mm in Fig. 13.

The original article has been thus corrected with the corrected references and thus updated.

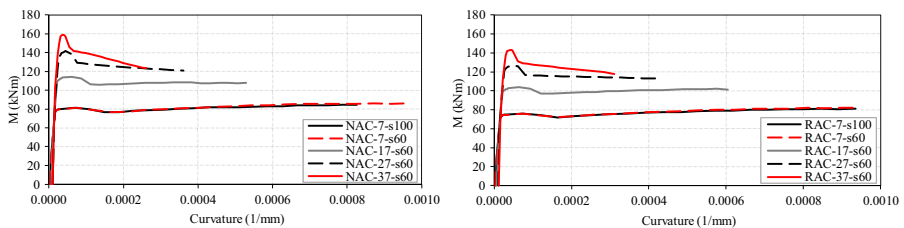


Fig. 9 Theoretically obtained moment-curvature relationships of NAC and RAC columns

The original article can be found online at <https://doi.org/10.1007/s10518-019-00687-0>.

✉ Ilyas Saribas
ilyassaribas@gmail.com

¹ Structural Engineering Division, Engineering Faculty, AAT Science and Technology University, 01250 Saricam, Adana, Turkey

² Structural and Earthquake Engineering Laboratory, Civil Engineering Faculty, Istanbul Technical University, 34469 Maslak, Istanbul, Turkey

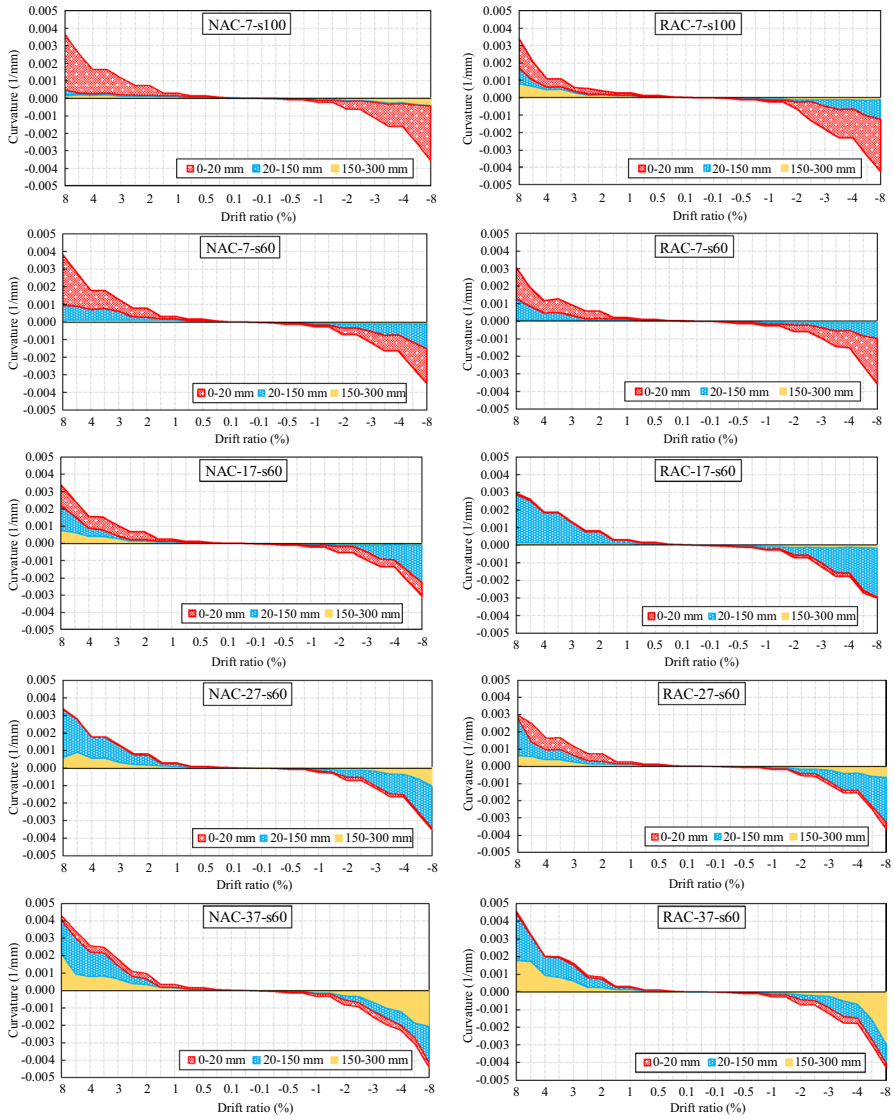


Fig. 13 Curvature-drift ratio relationships obtained in different gage lengths