



Correction to: ADAM-17 is expressed in the inflammatory myopathy and is involved with interstitial lung disease

Airi Nishimi¹ · Takeo Isozaki¹ · Shinichiro Nishimi¹ · Sho Ishii¹ · Takahiro Tokunaga¹ · Hidekazu Furuya¹ · Kuninobu Wakabayashi¹ · Tsuyoshi Kasama¹

Published online: 10 March 2018

© International League of Associations for Rheumatology (ILAR) 2018

Correction to: Clinical Rheumatology

<https://doi.org/10.1007/s10067-018-4014-5>

The original version of this article, unfortunately, contained errors and are now presented correctly in this article.

In the “Result” section under subtitle “ADAM-17 expression on inflammatory myopathy tissues” citation for “(Fig. 1a, b)” should have read as “(Fig. 1A, d)” and under the subtitle “Clinical characteristics of study subjects”, the line “CK and lactate dehydrogenase (LDH)” should have read as “KL-6”.

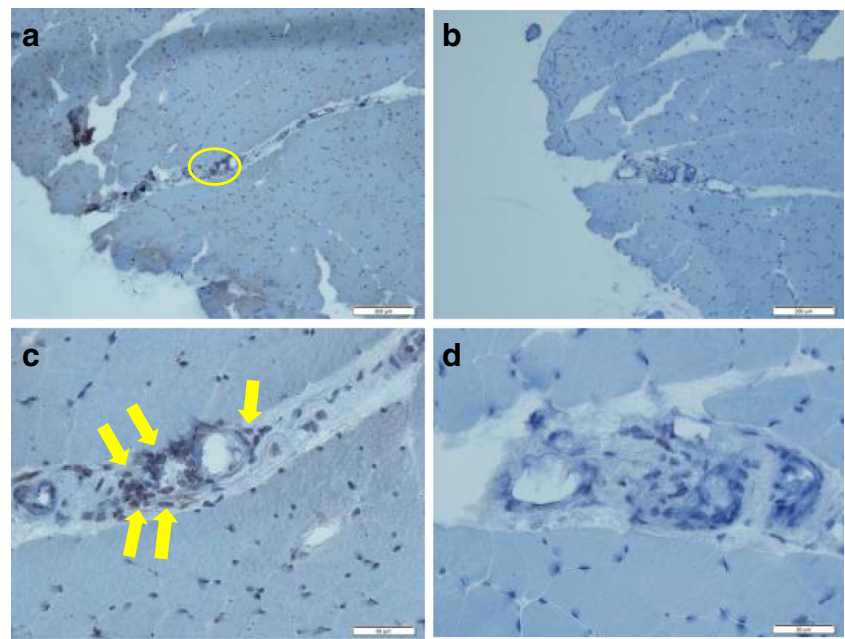
Figure 1 caption and the panel C image of the figure were also corrected as shown below:

The online version of the original article can be found at <https://doi.org/10.1007/s10067-018-4014-5>

✉ Takeo Isozaki
t.isozaki@med.showa-u.ac.jp

¹ Division of Rheumatology, Department of Medicine, Showa University School of Medicine, 1-5-8 Hatanodai, Shinagawa-ku, Tokyo 142-8666, Japan

Fig. 1 ADAM-17 is expressed on the muscle tissue of an inflammatory myopathy patient. **a–d** Representative photomicrographs of muscle tissue samples from patients with inflammatory myopathy. **a** and **c** Cryosections were stained for ADAM-17. ADAM-17 expression on inflammatory cells (circle and arrow). **a** Original magnification, $\times 100$. **c** Original magnification, $\times 400$. **b** and **d** Cryosections were stained for control IgG. **b** Original magnification, $\times 100$. **d** Original magnification, $\times 400$



ADAM-17

rabbit IgG