

## Erratum to: Some engineering geological effects of drought: examples from the UK

A. Brian Hawkins

Published online: 30 May 2013  
© Springer-Verlag Berlin Heidelberg 2013

### Erratum to: Bull Eng Geol Environ (2013) 72:37–59 DOI 10.1007/s10064-013-0458-7

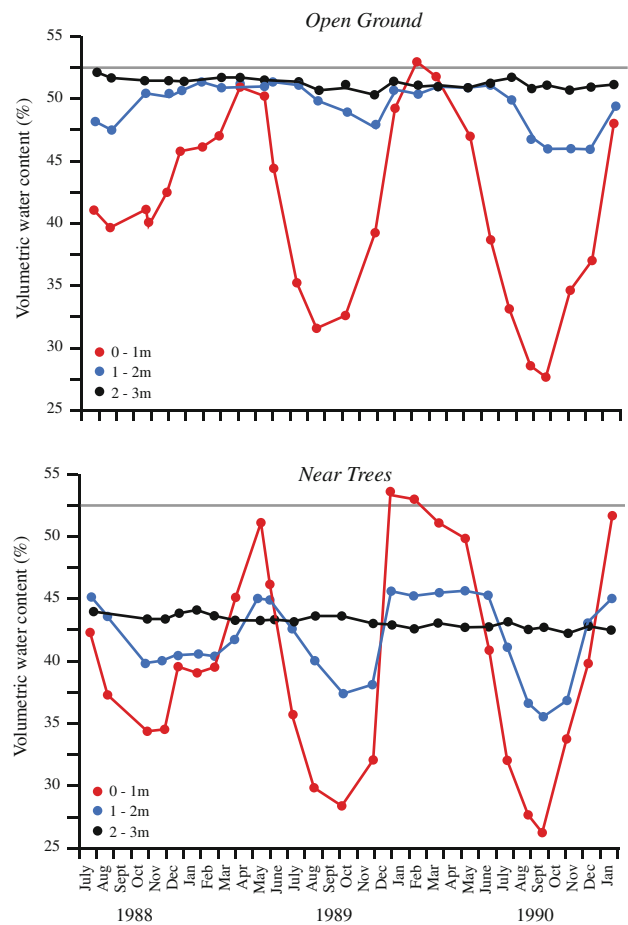
The Editor of the journal would like to correct the errors in the original publication as specified below:

The corrected Fig. 22 is given opposite:

The caption of Fig. 23 should read:  
Comparison between groundwater level in the summer and winter of 1991 with distance from a mature oak tree on the Oxford Clay at Melksham.

The caption of Fig. 24 should read:  
Schematic representation of the different effects of drought on grassland areas on the sunny/shaded sides of a house.

The caption of Fig. 25 should read:  
Temperature, soil moisture deficit, ground movement and fracture rate for a pipeline experiment undertaken in the Kimmeridge Clay at Swindon (modified from Owen et al. 1992).



**Fig. 22** Variations in volumetric moisture content with depth in open ground and close to trees during the dry period in the late 1980s/early 1990s (modified from Freeman et al. 1992a)

The online version of the original article can be found under doi:[10.1007/s10064-013-0458-7](https://doi.org/10.1007/s10064-013-0458-7).

A. B. Hawkins (✉)  
University of Bristol, c/o Charlotte House, 22 Charlotte Street,  
Bristol BS1 5PZ, UK  
e-mail: [brian\\_hawkins@btconnect.com](mailto:brian_hawkins@btconnect.com)