

High expressions of vascular endothelial growth factor and platelet-derived endothelial cell growth factor predict poor prognosis in alpha-fetoprotein-negative hepatocellular carcinoma patients after curative resection

Jie Hu · Yang Xu · Zao-Zhuo Shen · Zheng Wang ·
Qing Lu · Guo-Huan Yang · Zheng-Bin Ding ·
Jia Fan · Jian Zhou

Published online: 20 August 2009
© Springer-Verlag 2009

Erratum to: J Cancer Res Clin Oncol
DOI 10.1007/s00432-009-0577-5

In article 10.1007/s00432-009-0577-5, Figs. 2b, f and 3b are incorrect. Below is the correct version of the figures.

The online version of the original article can be found under
doi:[10.1007/s00432-009-0577-5](https://doi.org/10.1007/s00432-009-0577-5).

J. Hu · Y. Xu · Z.-Z. Shen · Z. Wang · Q. Lu · G.-H. Yang ·
Z.-B. Ding · J. Fan (✉) · J. Zhou (✉)
Key Laboratory for Carcinogenesis & Cancer Invasion,
The Chinese Ministry of Education, Liver Cancer Institute,
Zhong Shan Hospital and Shanghai Medical School,
Fudan University, 136 Yi Xue Yuan Road, 200032 Shanghai,
People's Republic of China
e-mail: jjafan99@yahoo.com

J. Zhou
e-mail: zhou.jian@zs-hospital.sh.cn

J. Fan · J. Zhou
Institute of Biomedical Sciences, Fudan University,
200032 Shanghai, People's Republic of China

Fig. 2

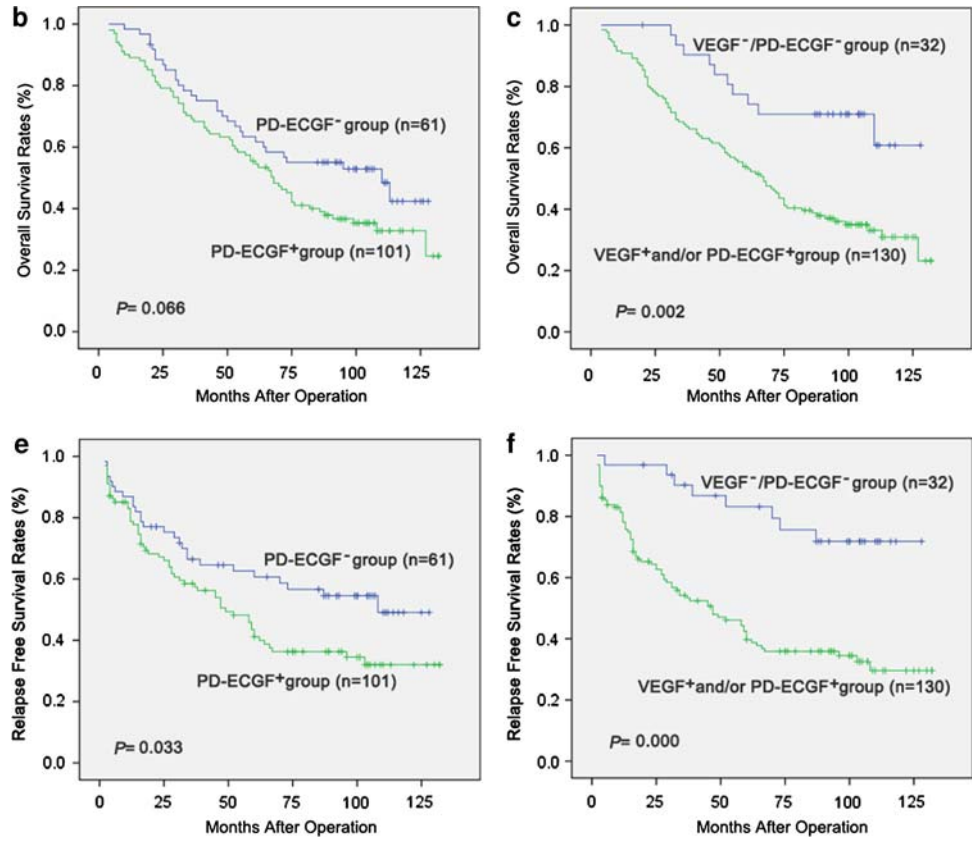


Fig. 3

