



Correction to: Emergence of deep convection in the Arctic Ocean under a warming climate

Camille Lique¹ · Helen L. Johnson² · Yves Plancherel²

Published online: 18 November 2017
© Springer-Verlag GmbH Germany, part of Springer Nature 2017

Correction to: Clim Dyn
<https://doi.org/10.1007/s00382-017-3849-9>

In the original article, Figures 3, 4 and 5 are the same one (a duplication of Figure 4).

The corrected version of Figures 3 and 5 is given below.
The original article was corrected.

The original article can be found online at <https://doi.org/10.1007/s00382-017-3849-9>.

✉ Camille Lique
Camille.Lique@ifremer.fr

¹ Laboratoire d'Océanographie Physique et Spatiale, UMR6523, CNRS-Ifremer-UBO-IRD, Brest, France

² Department of Earth Sciences, University of Oxford, Oxford, UK

Fig. 3 Mean March and September sea surface temperature (SST, in °C) for the *CTRL* and the $4 \times \text{CO}_2$ runs and the difference between the two runs. For the *bottom row*, *black hatching* indicates areas where the difference between the two runs is not significant. The *red contour* corresponds to the location of the sea ice edge (defined as the 15% concentration contour), and the *black contour* on the *bottom panels* shows the 500 m isobath

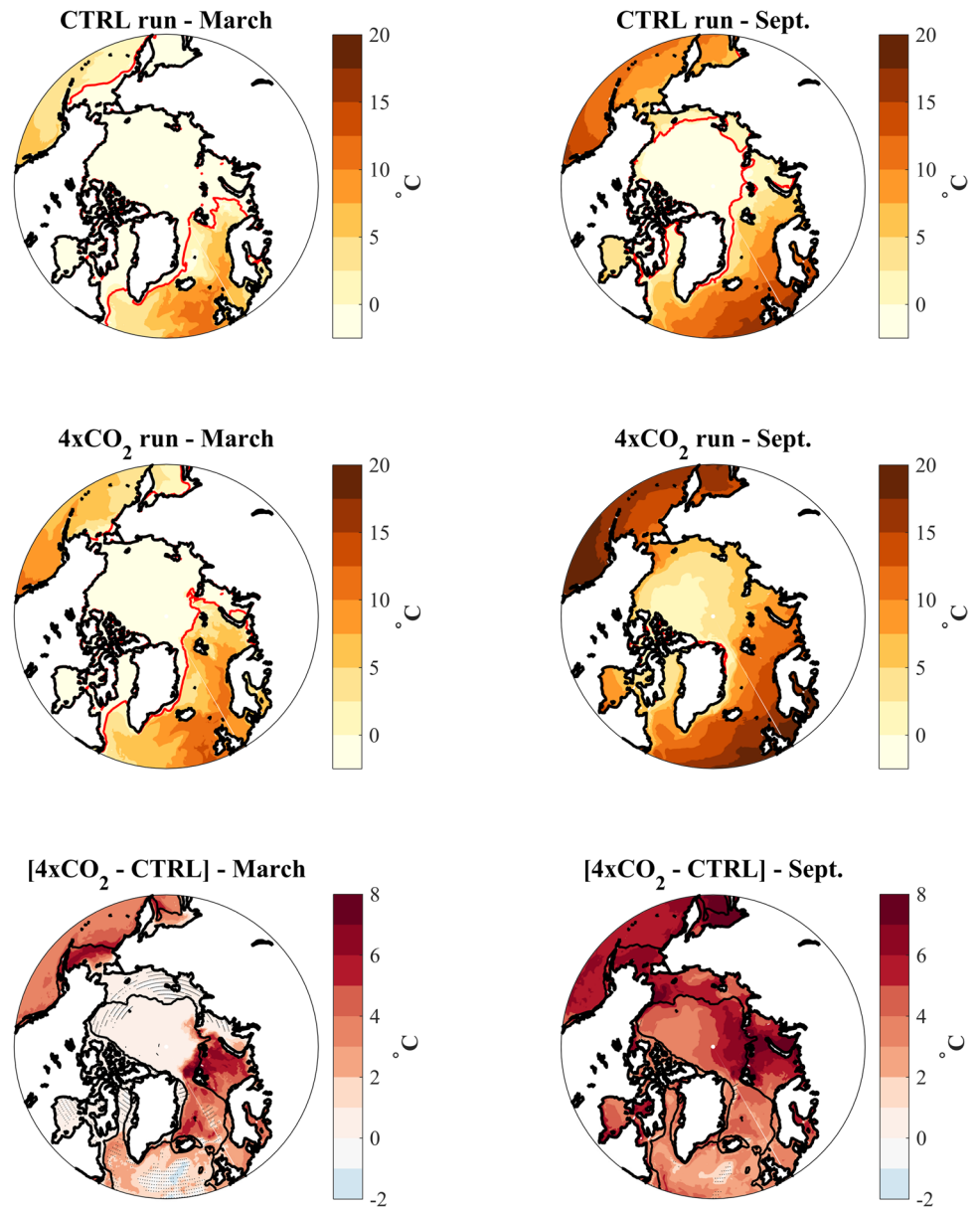


Fig. 5 Mean March and September sea surface potential density (σ , in kg/m^3) for the CTRL and the $4 \times \text{CO}_2$ runs and the difference between the two runs. For the *bottom row*, *black hatching* indicates areas where the difference between the two runs is not significant. The *red contour* corresponds to the location of the sea ice edge (defined as the 15% concentration contour), and the *black contour* on the *bottom panels* shows the 500 m isobath

