



## Shoulder pain

Sangoh Lee<sup>1</sup> · Asif Saifuddin<sup>1</sup>

Published online: 8 May 2018  
© ISS 2018

### Question:

45-year old male with global shoulder pain and limited range of movement (Figs. 1, 2, 3, and 4).

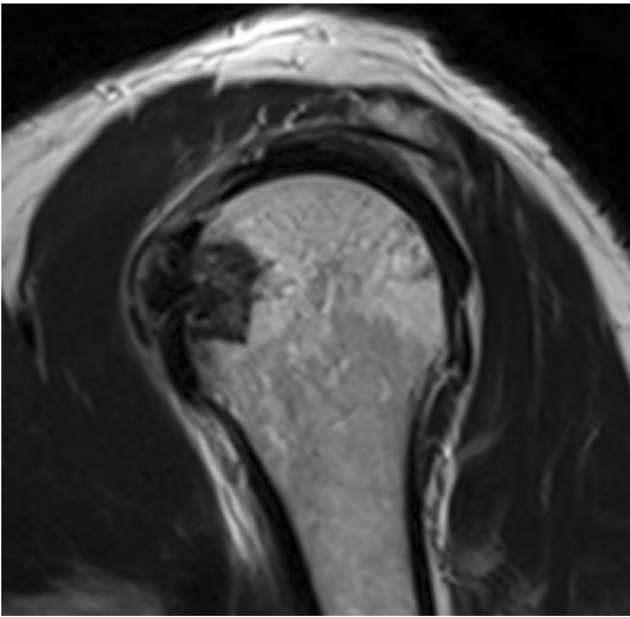
---

The diagnosis can be found at <https://doi.org/10.1007/s00256-018-2968-7>

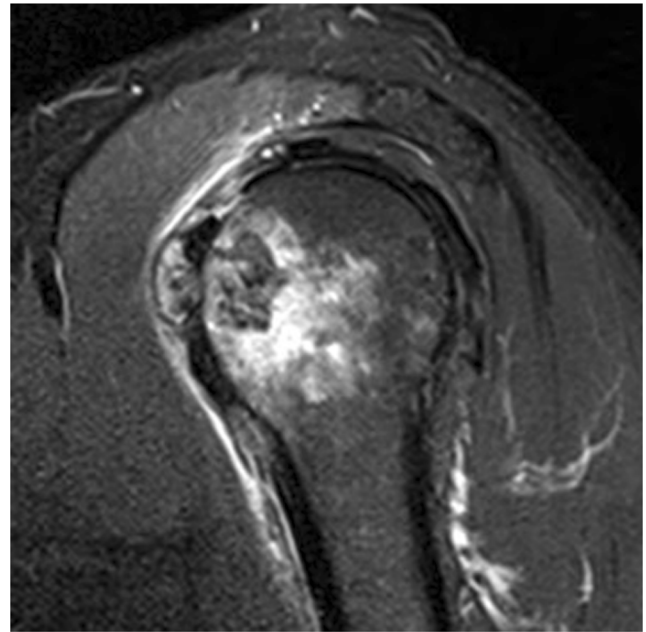
---

✉ Sangoh Lee  
[sangoh.lee@nhs.net](mailto:sangoh.lee@nhs.net)

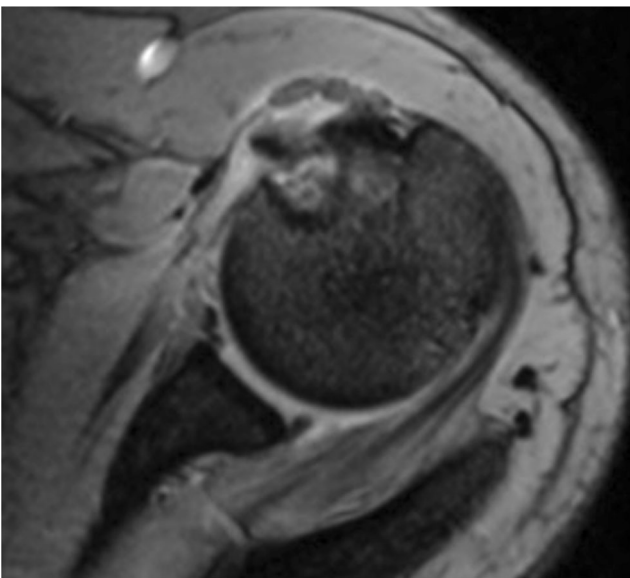
<sup>1</sup> Royal National Orthopaedic Hospital NHS Trust, London, UK



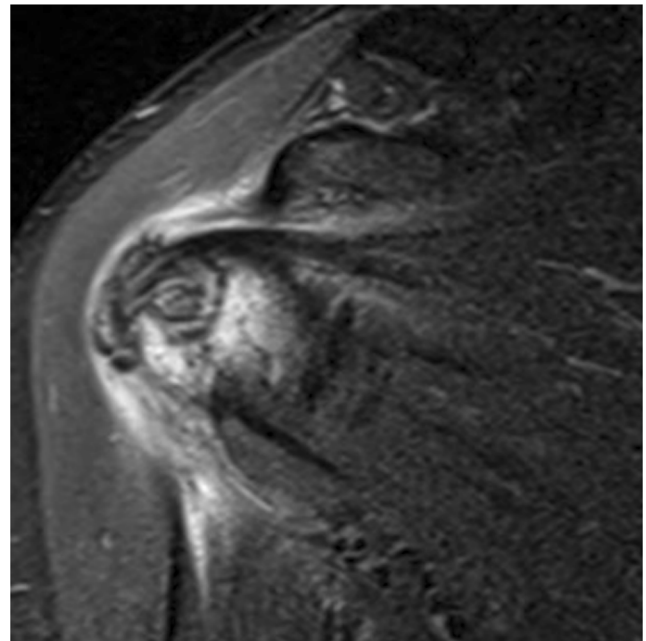
**Fig. 1** Sagittal T2W FSE MR image



**Fig. 3** Sagittal STIR MR image



**Fig. 2** Axial T2\*W GRE MR image



**Fig. 4** Coronal STIR MR image