



## Bilateral painful foot masses

Neil V. Shah<sup>1</sup> · Natasha Ahmed<sup>2</sup> · Prateek Baghel<sup>1</sup> · Srinivas Kolla<sup>3</sup> · Aditya V. Maheshwari<sup>1</sup>

Published online: 2 May 2018  
© ISS 2018

A 20-year-old female presented with ten-year history of progressively worsening pain with prolonged walking and difficulty with footwear (Figs. 1, 2, 3, 4, 5).

---

The diagnosis can be found at doi: <https://doi.org/10.1007/s00256-018-2953-1>

---

✉ Aditya V. Maheshwari  
Aditya.Maheshwari@downstate.edu

<sup>1</sup> Department of Orthopaedic Surgery and Rehabilitation Medicine, Downstate Medical Center, State University of New York (SUNY), 450 Clarkson Ave, MSC 30, Brooklyn, NY 11203, USA

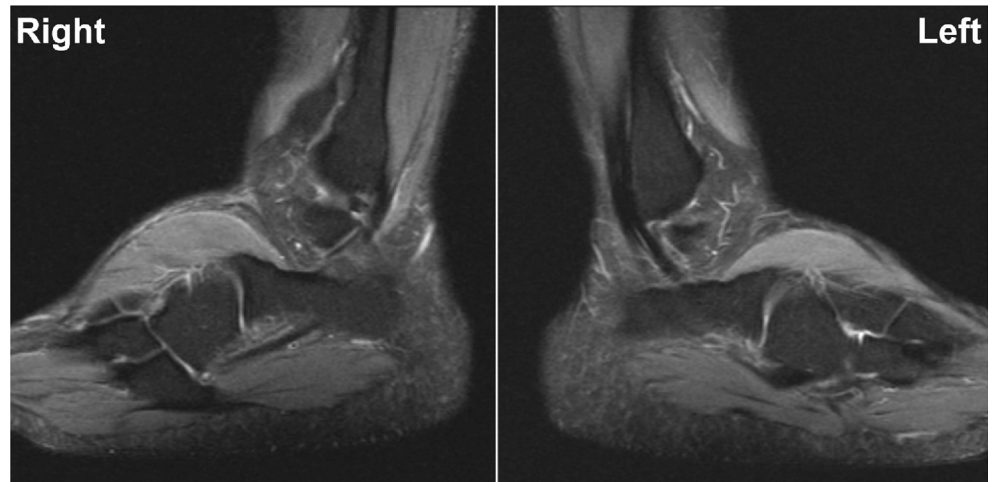
<sup>2</sup> School of Medicine, Saba University, Saba, Caribbean, Netherlands

<sup>3</sup> Department of Radiology, Downstate Medical Center, State University of New York (SUNY), Brooklyn, NY, USA

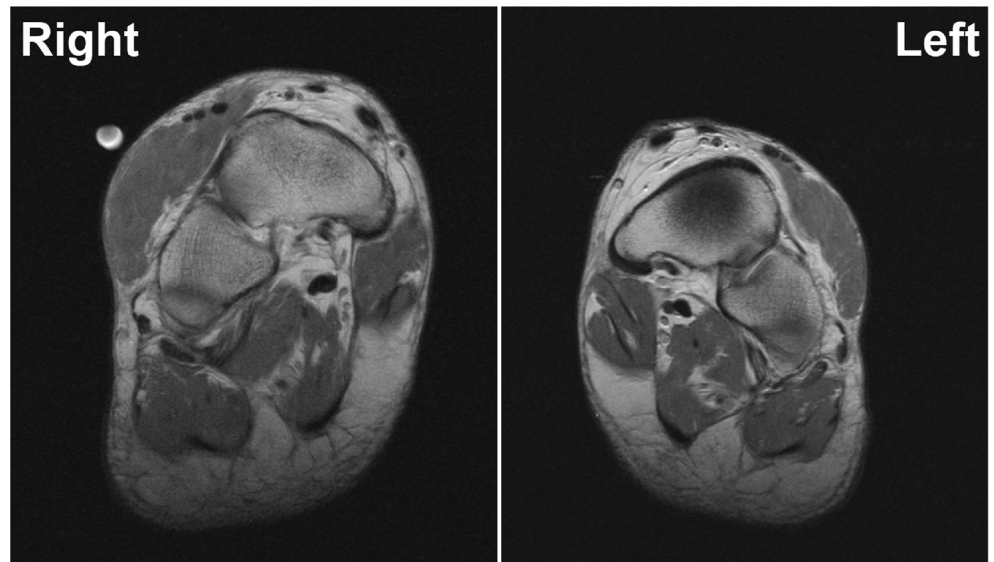
**Fig. 1** Clinical photograph of both feet



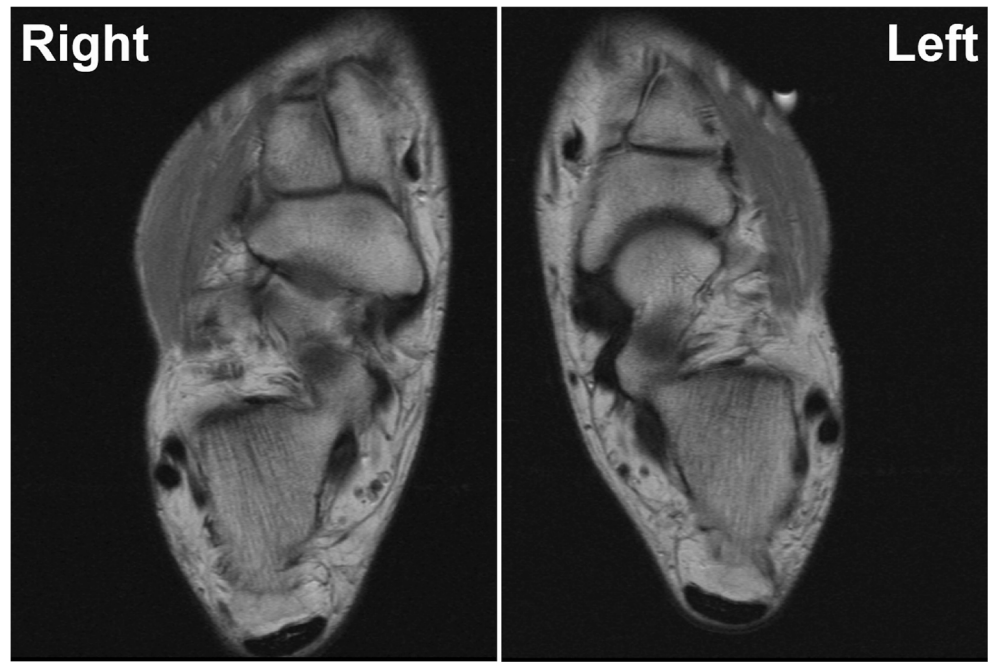
**Fig. 2** Sagittal STIR images of both feet



**Fig. 3** Coronal PD images of both feet



**Fig. 4** Axial PD images of both feet



**Fig. 5** Gross pathological specimens from the right foot (left) and left foot (right)

