



Test yourself: weakness and wasting of forearm

Ayano Tachibana¹ · Nikhil Kotnis¹

Published online: 22 January 2018
© ISS 2018

History: 23-year-old with 4 months history of progressively worsening weakness and difficulty extending her thumb and fingers. (Figs 1, 2, 3, 4, 5, 6, and 7)

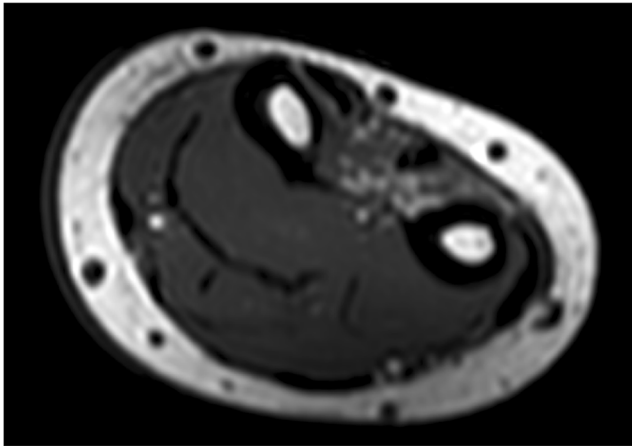


Fig. 1 T1 Axial forearm

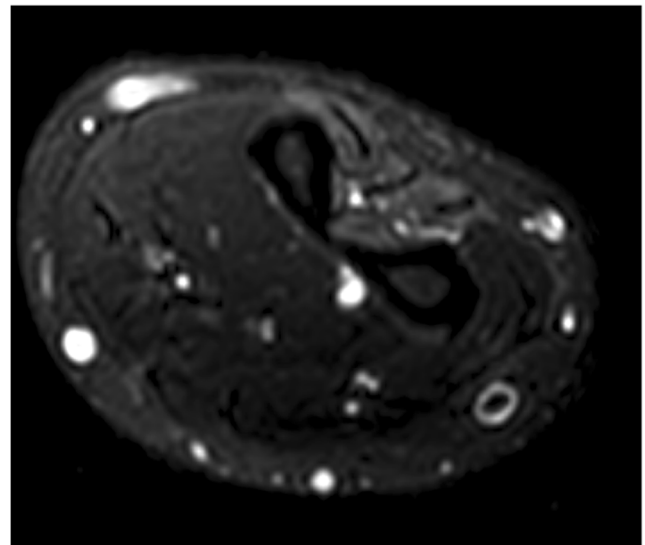


Fig. 2 T2 SPAIR axial forearm

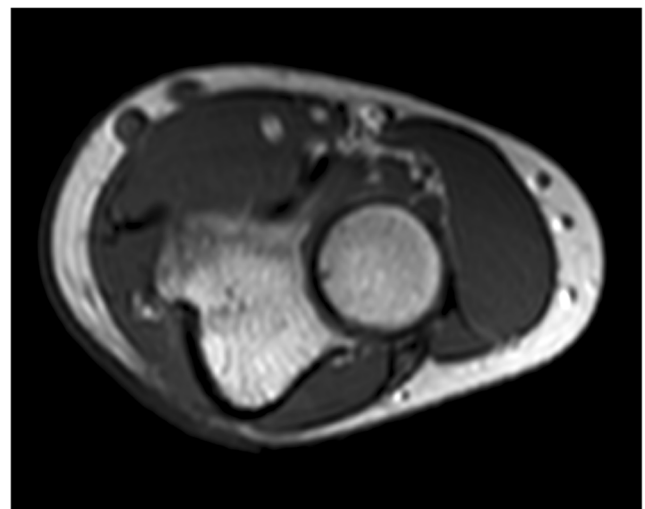


Fig. 3 T1 W axial slice just proximal to the supinator muscle origin

The diagnosis can be found at doi: <https://doi.org/10.1007/s00256-017-2863-7>

✉ Ayano Tachibana
ayanotachibana@doctors.org.uk

¹ Sheffield Teaching Hospitals NHS Foundation Trust, Northern General Hospital, Herries Road, Sheffield S5 7AU, UK

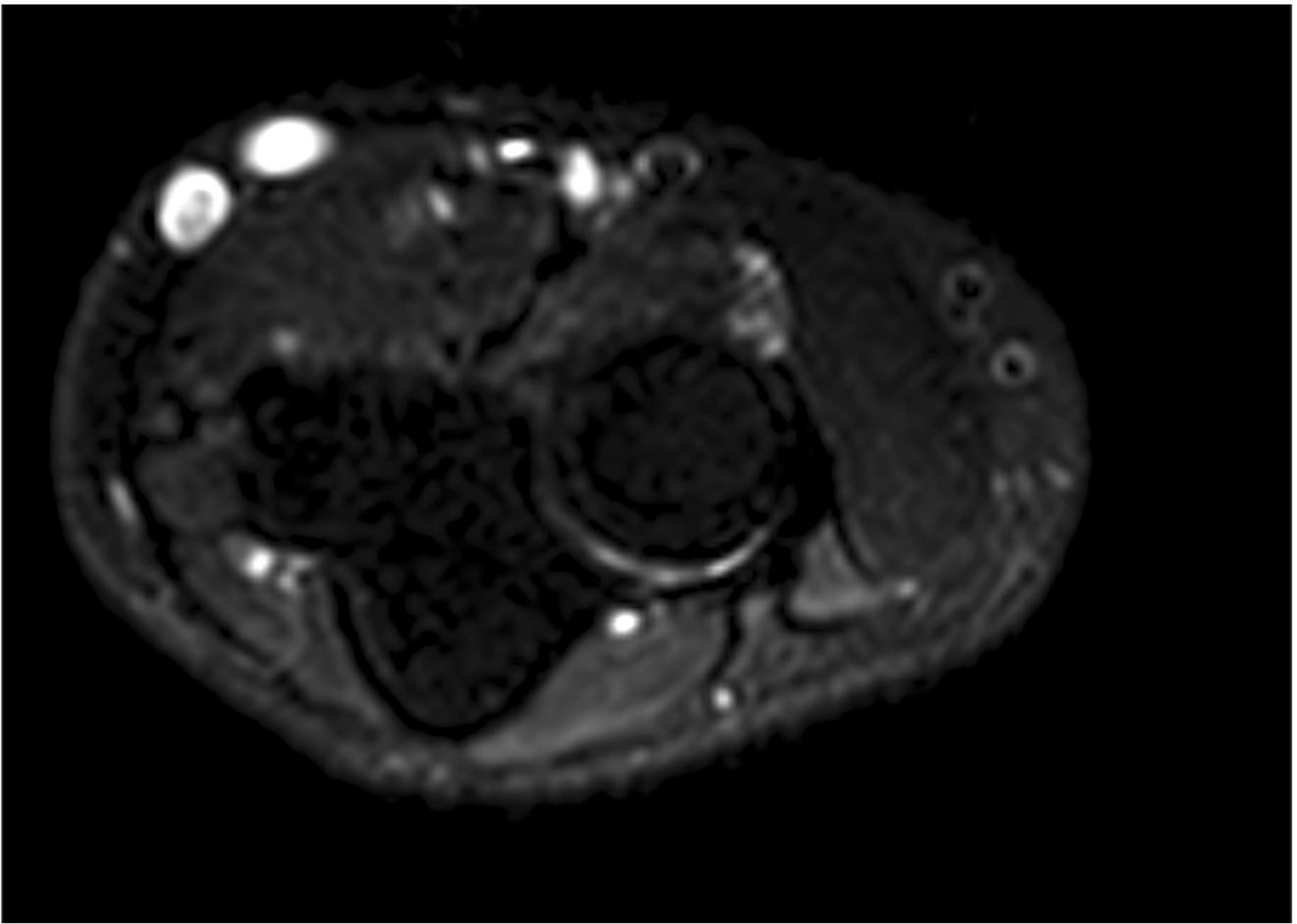


Fig. 4 T2 W SPAIR axial slice just proximal to the supinator muscle origin



Fig. 5 US long axis at the antecubital fossa



Fig. 6 US Transverse view of lateral intermuscular septum within the antecubital fossa

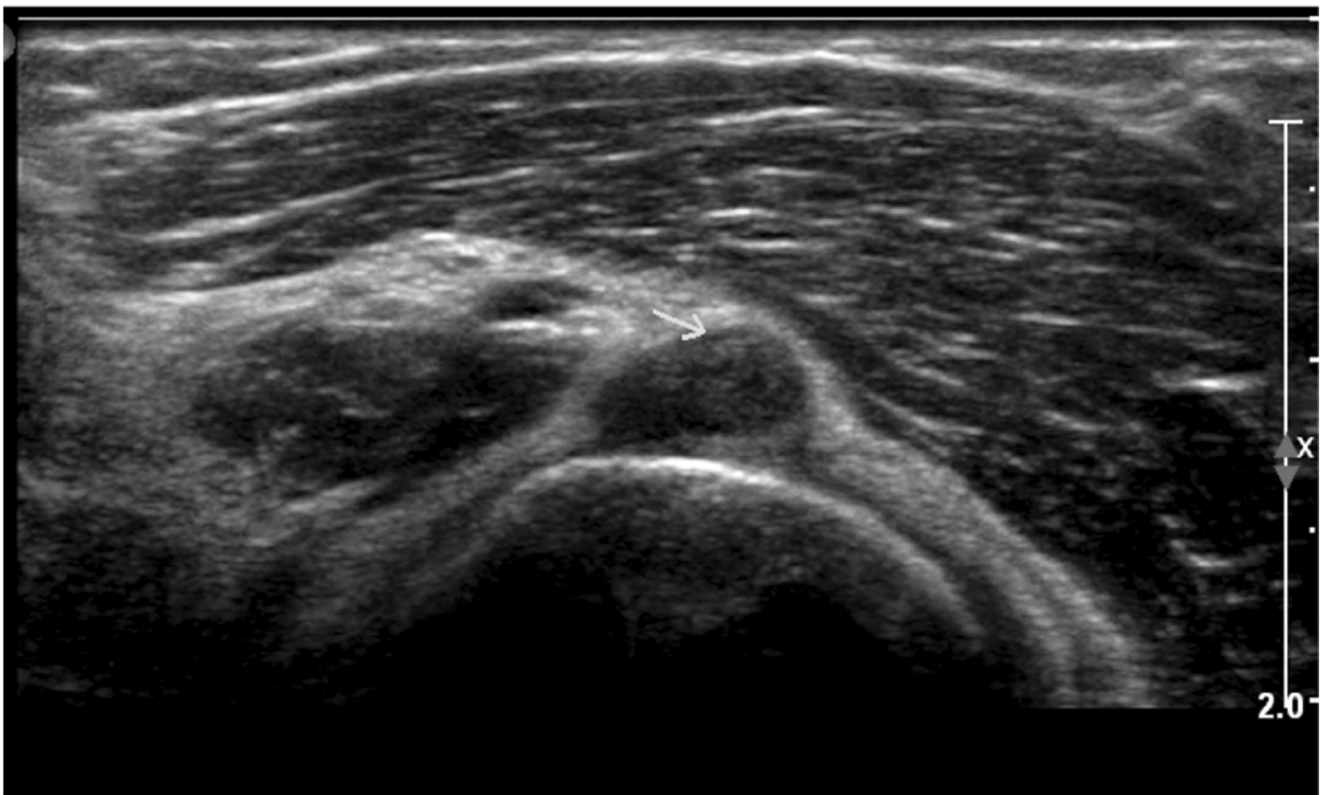


Fig. 7 US Transverse view just proximal to the supinator origin

Compliance with ethical standards

Conflict of interest The authors declare that they have no conflict of interest.