



Middle-aged female with palpable swelling over the abdominal wall

Amar Udare¹ · Sanjay Desai¹ · Aruna Chandorkar² · Sujit Joshi²

Published online: 18 December 2017
© ISS 2017

A 31-year-old female presented with a palpable swelling for 3 years over the left lower abdominal wall with recent increase in size. Figure 1 (axial T1W), Fig. 2 (axial T2 fat-saturated), Fig. 3 (DWI and ADC) and Fig. 4 (early arterial and venous phase post contrast T1 fat-saturated) MR images were acquired. Post-biopsy photomicrographs are also provided (Figs. 5 and 6).

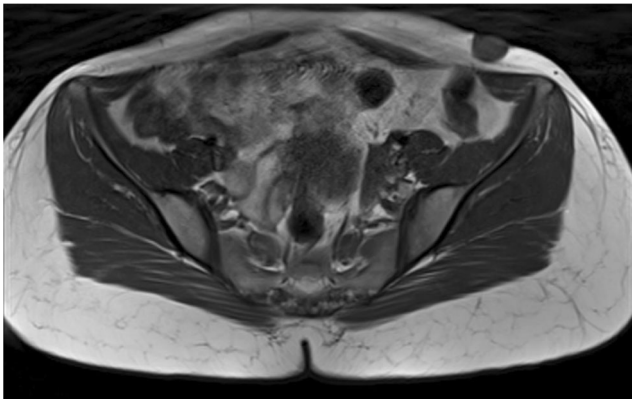


Fig. 1 Axial T1

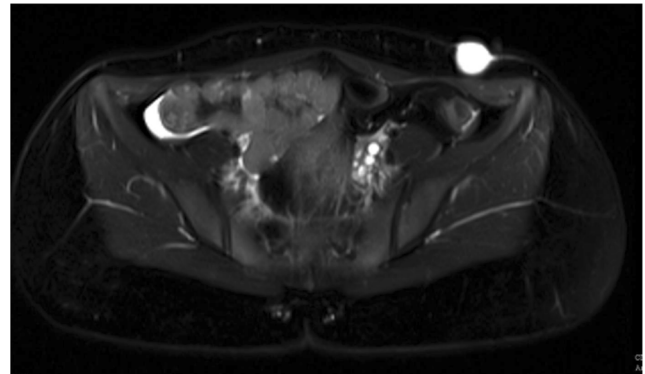


Fig. 2 Axial T2 FS

The diagnosis can be found at <https://doi.org/10.1007/s00256-017-2849-5>

✉ Amar Udare
amarudare@gmail.com

¹ Department of Radiology, Deenanath Mangeshkar Hospital and Research Centre, Pune, India

² Department of Pathology, Deenanath Mangeshkar Hospital and Research Centre, Pune, India

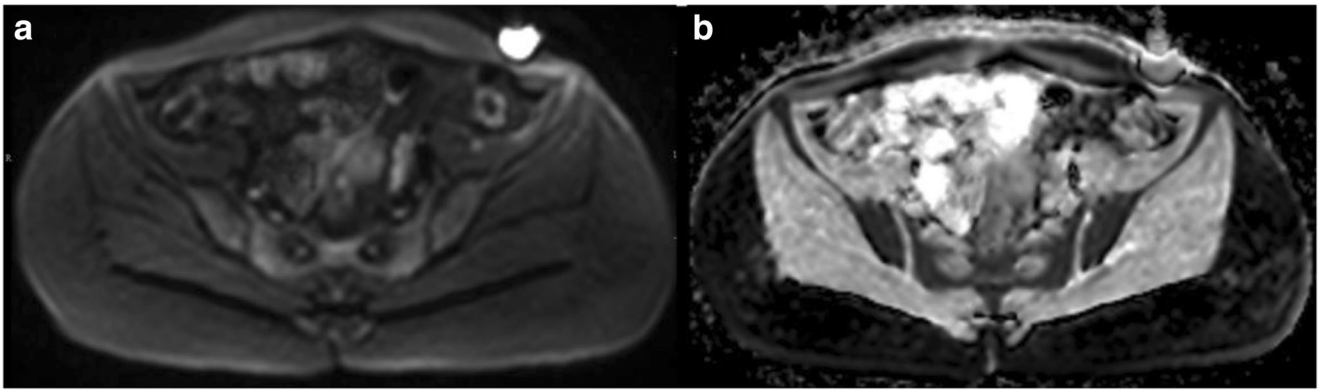


Fig. 3 a–b DWI image and ADC images

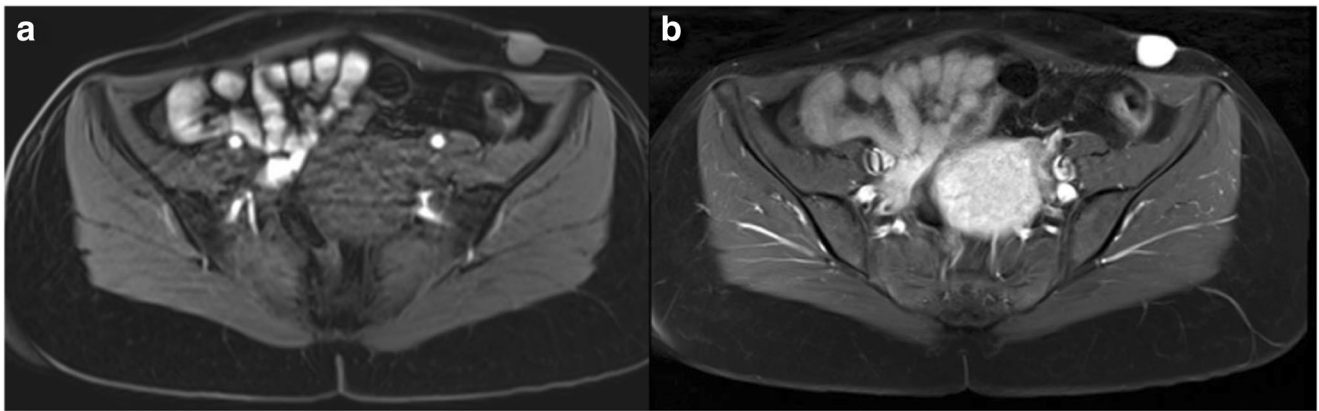


Fig. 4 a–b Post-contrast T1 FS images in early arterial and venous phase

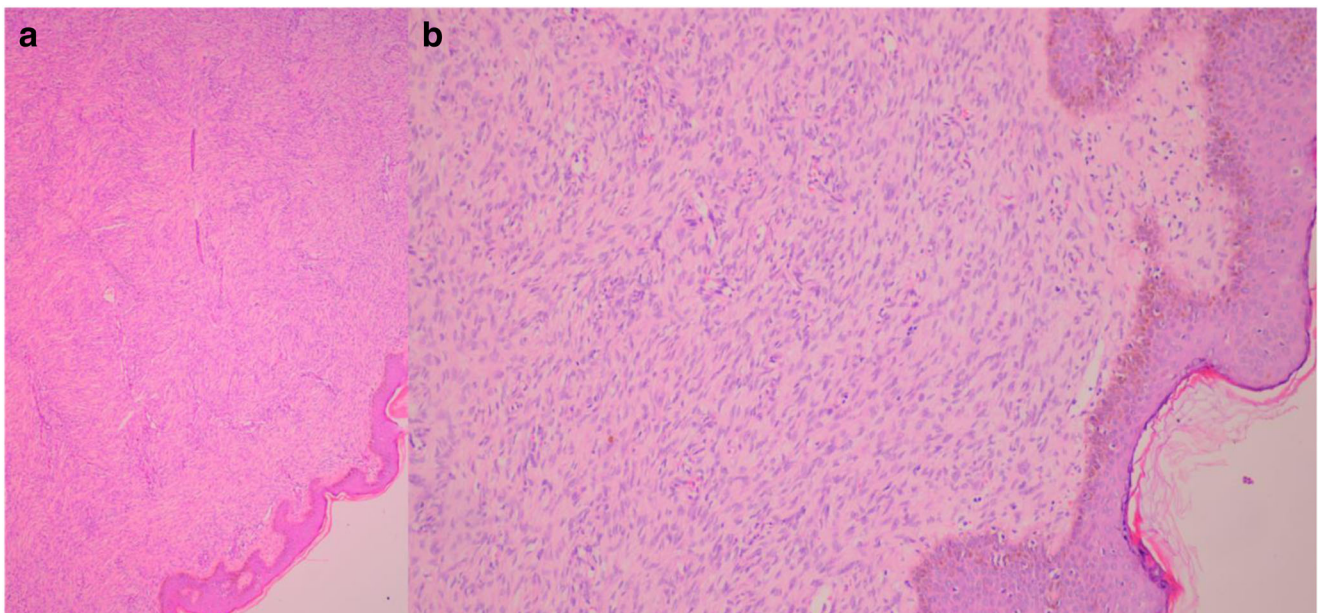


Fig. 5 a–b H & E stain photomicrographs at 4× and 20× magnification respectively

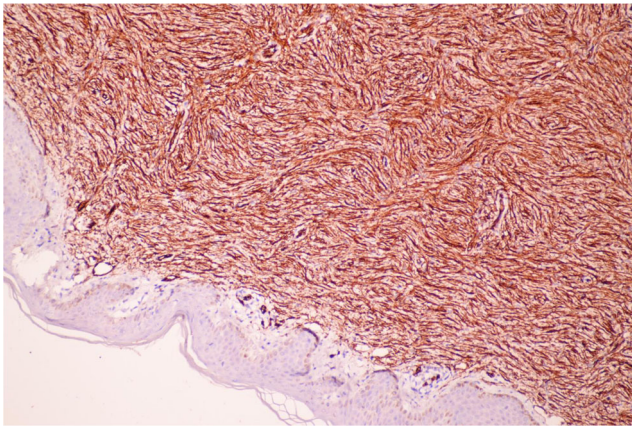


Fig. 6 Photomicrograph of IHC for CD34

Compliance with ethical standards

Grants received None.

Disclosures None.

Conflict of interest None.