

Increasing great toe pain in a patient with soft tissue swelling and nail enlargement

Kensaku Yamaga · Takeshi Minamizaki ·
Toshiyuki Dokai · Takahide Kikkawa · Haruhiko Yoshida

Published online: 11 February 2015
© ISS 2015

Question

A 16-year-old boy presented with pain and soft tissue swelling of his right great toe. A clinical photograph is shown (Fig. 1). Radiography, CT, and MRI examinations were performed (Fig. 2, 3, and 4). A photomicrograph of the lesion is shown (Fig. 5).



Fig. 1 Clinical photograph

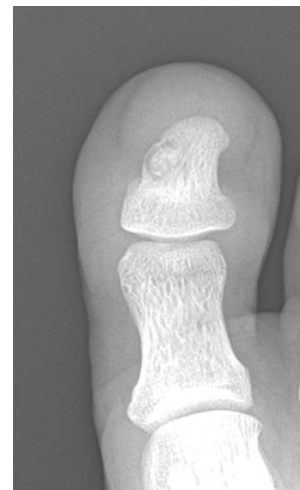


Fig. 2 Radiograph of the great toe

The diagnosis can be found at doi: [10.1007/s00256-015-2110-z](https://doi.org/10.1007/s00256-015-2110-z)

K. Yamaga · T. Minamizaki · T. Dokai · T. Kikkawa
Department of Orthopaedic Surgery, Yonago Medical Center,
Yonago, Japan

H. Yoshida
Department of Pathology, Yonago Medical Center, Yonago, Japan

Present Address:

K. Yamaga (✉)
Department of Orthopaedic Surgery, Faculty of Medicine, Tottori
University, 36-1 Nishi-cho, Yonago, Tottori 683-8504, Japan
e-mail: y10142527@gmail.com

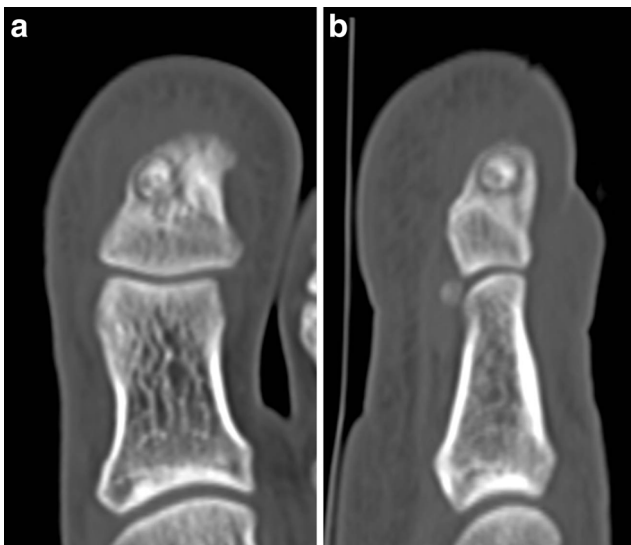


Fig. 3 Representative CT. **a** Coronal section. **b** Sagittal section

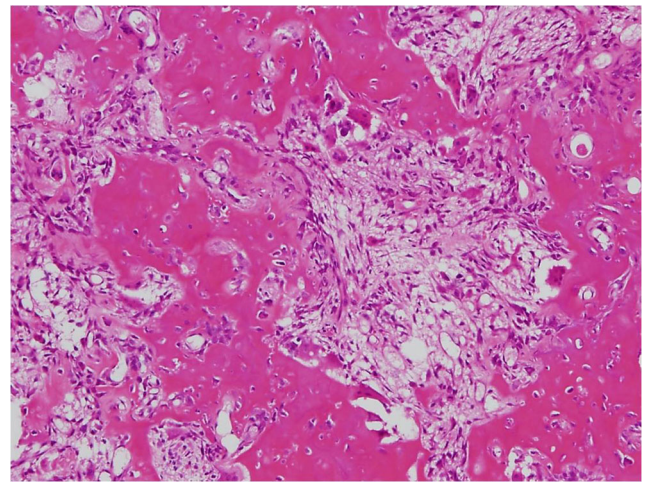


Fig. 5 Histological photograph

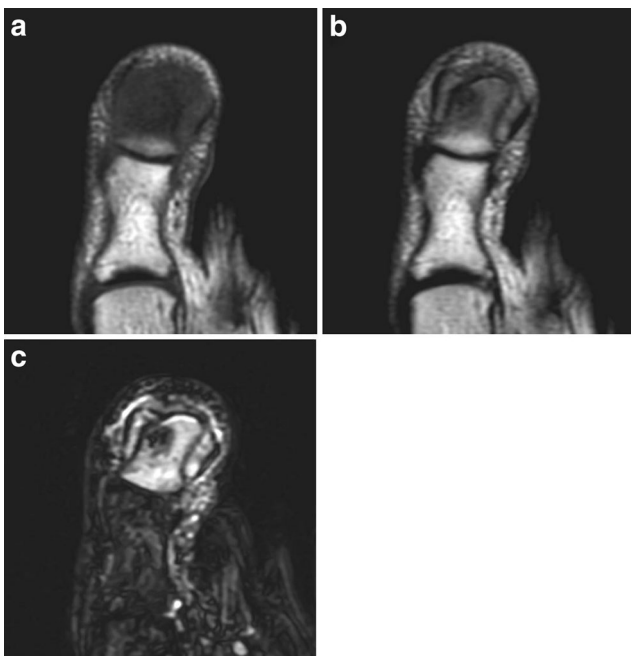


Fig. 4 Representative coronal MRI. **a** T1-weighted image. **b** T2-weighted image. **c** Short-tau inversion recovery image