

A. Watanabe  
T. Kobashi

## Lateral gaze disturbance due to cerebral microbleed in the medial lemniscus in the mid-pontine region: a case report

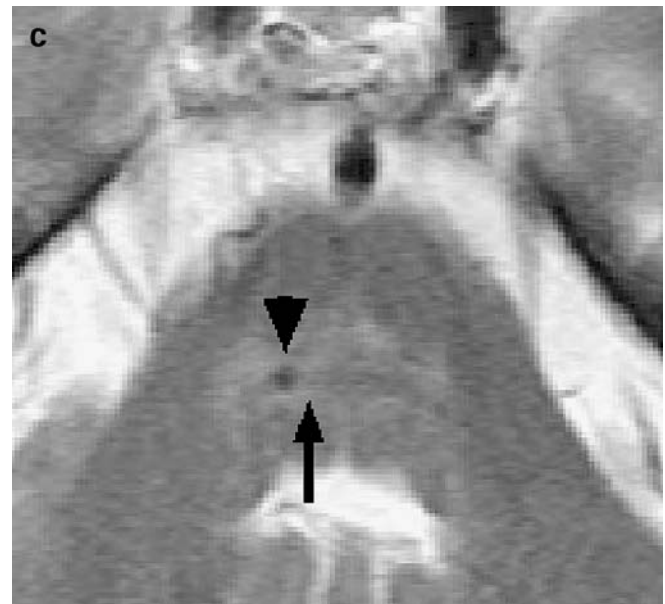
Published online: 25 July 2006  
© Springer-Verlag 2006

The online version of the original article can be found at: <http://dx.doi.org/10.1007/s00234-005-1441-1>.

A. Watanabe (✉) · T. Kobashi  
Department of Neurosurgery,  
Kasaoka Daiichi Hospital,  
1945 Yokoshima,  
Kasaoka, Okayama, 714-0043, Japan  
e-mail: akira-watanabe@kasaoka-d-hp.or.jp  
Tel.: +81-865-670211  
Fax: +81-865-673131

**Neuroradiology (2005) 47: 908–911**

In Fig. 1c the arrow and the arrowhead were incorrectly positioned. The corrected figure is shown here.



**Fig. 1** **a** A first gradient-echo T2\*-weighted MR image showing no cerebral microbleed in the mid-pontine region (23 April 2003). **b** A second gradient-echo T2\*-weighted MR image showing a new cerebral microbleed in the mid-pontine region (15 April 2004). **c** The cerebral microbleed (*arrowhead*) was found in the medial lemniscus of the right side (*arrow*) on T2-weighted MR imaging