



Jitesh Ahuja, Siddhartha G. Kapnadak,
and Sudhakar Pipavath

Introduction

Lung transplantation is a viable treatment option for end-stage lung disease. Common indications for lung transplantation are chronic obstructive pulmonary disease (COPD), idiopathic pulmonary fibrosis, cystic fibrosis, alpha-1 antitrypsin deficiency, and pulmonary arterial hypertension (PAH). Other less common indications include end-stage sarcoidosis, lymphangioleiomyomatosis (LAM), pulmonary Langerhans cell histiocytosis/granulomatosis (PLCH/G), and other interstitial lung diseases. Either single or bilateral lung transplantation can be performed. Bilateral transplantation is required for patients with suppurative lung diseases including cystic fibrosis and most patients with PAH. While suitable outcomes may be achieved with single lung transplantation for other diagnoses, there is a trend in recent years for use of bilateral transplantation, largely related to a suggestion of better long-term survival seen in registry data [1]. Specifically, according to the 2014 International Society for

Heart and Lung Transplantation (ISHLT) registry report, the median survival for all adult recipients is 5.7 years, but bilateral lung recipients appear to have a better median survival than single lung recipients (7 versus 4.5 years, respectively) [1]. Overall survival after lung transplantation has improved due to refinement in surgical technique, improvement in organ procurement and preserving techniques, and advances in medical management and immunosuppression. The most common cause of mortality in first 30 days after lung transplantation is primary graft dysfunction. Infection is the most common cause of mortality in the first 6 months and chronic rejection thereafter [1].

Complications after lung transplantation are common and may have nonspecific clinical and radiologic manifestations. In addition, frequently, several of these complications may coexist and complicate their presentation. In order to reduce mortality and morbidity among lung transplant recipients, it is important to recognize these complications accurately and in time. The time point at which these complications occur relative to the date of transplant is crucial in formulating a differential diagnosis and recognizing them accurately.

In this chapter, we will describe the radiologic manifestations of various pulmonary complications occurring after lung transplantation. Complications are classified chronologically into groups based on the time from transplant:

J. Ahuja (✉) · S. Pipavath
Department of Radiology, University of Washington
Medical Center, Seattle, WA, USA
e-mail: ahujaj@uw.edu; snjp@uw.edu

S. G. Kapnadak
Division of Pulmonary and Critical Care Medicine,
University of Washington Medical Center,
Seattle, WA, USA
e-mail: skap@uw.edu

immediate (<24 h), early (24 h to 1 week), intermediate (8 days to 2 months), primary late (2–4 months), and secondary late (≥ 4 months) (Table 19.1).

Immediate Complications (<24 h)

Donor-Recipient Size Mismatch

Size mismatch between the donor lung and recipient thoracic cavity may result in mechanical complications. Most centers accept a size

difference ranging from 10 to 25% [2]. If the donor lung is too large for recipient thoracic cavity, atelectasis and impaired ventilation may result. Atelectasis may be evident on immediate postoperative radiograph. On the other hand, when a small allograft lung is used in single lung transplantation for emphysema, the hyperexpanded native lung may compress the allograft, resulting in restrictive pulmonary function (Fig. 19.1a, b). Native lung volume reduction surgery performed at the time of, or after, transplantation may help prevent this complication [3].

Lung torsion is a rare but serious complication that can occur due to discrepancy in size between the recipient's enlarged thoracic cavity and donor's small lung. Imaging will show torsion of the hilar structures including vasculature and airway. It can lead to collapse of a lobe or entire lung due to airway compromise or expansible consolidated lobe due to hemorrhagic infarction. Once lung torsion is suspected, immediate surgery is indicated to avoid death from parenchymal necrosis.

Table 19.1 Post lung transplantation complications

Time of occurrence	Types of complication
Immediate (<24 h)	Donor-recipient size mismatch Hyperacute rejection
Early (>24 h to 1 week)	Primary graft dysfunction and pleural complications
Intermediate (8 days to 2 months)	Acute rejection Airway anastomotic complications: bronchial dehiscence Infections: bacterial, fungal, and viral
Primary late (2–4 months)	Infections: fungal and viral Airway anastomotic complications: bronchial stenosis
Secondary late (>4 months)	Chronic rejection Upper lobes fibrosis Organizing pneumonia PTLD Recurrence of primary disease

Hyperacute Rejection

Hyperacute rejection is caused by the presence of preformed antibodies to donor organ-specific human leukocyte antigen (HLA) or ABO antigen. ABO matching and improved antibody detection and crossmatch techniques have made hyperacute rejection very rare after lung transplanta-

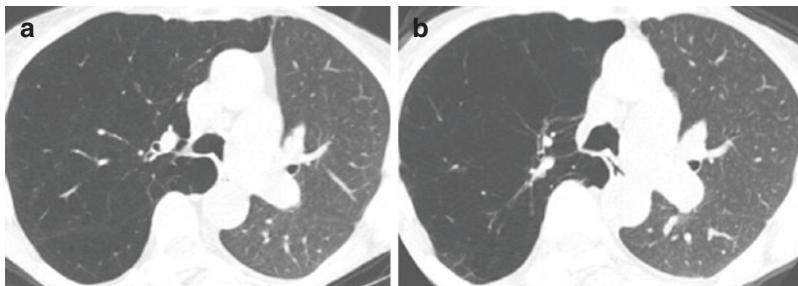


Fig. 19.1 (a, b) A 73-year-old woman status post left lung transplant for severe COPD. CT chest obtained 11 years after transplantation (a) showed hyperinflation of native right lung herniating to left hemithorax. The patient had restrictive pulmonary impairment and developed

squamous cell lung cancer in the right lower lobe (not shown), for which she underwent right lower lobectomy. Post lobectomy CT (b) showed an improvement in hyperinflation of the right lung

tion. When present, it can lead to acute alveolar damage resulting in graft dysfunction within minutes to hours after graft reperfusion [4]. On chest radiograph, hyperacute rejection manifests as diffuse homogeneous opacification of the entire allograft. Management options include aggressive immunosuppression, plasmapheresis, or urgent retransplantation [4].

Early Complications (24 h to 1 Week)

Primary Graft Dysfunction (Ischemic Reperfusion Injury or Reperfusion Edema)

Primary graft dysfunction is a form of non-cardiogenic pulmonary edema that usually occurs by postoperative day 1, peaks in severity by day 4, and generally improves by day 7. It is diagnosed after excluding left heart failure, fluid overload, infection, and acute transplant rejection. The pathogenesis of primary graft dysfunction is multifactorial including interruption of lymphatic and bronchial circulation, donor organ ischemia, surgical trauma, denervation of donor lung, and decreased surfactant production [5].

Chest radiography and CT manifestations are nonspecific and include perihilar and lower lobe predominant ground-glass opacity, and/or consolidation, interlobular septal thickening, and peribronchial air-space opacities (Figs. 19.2 and 19.3).

Pleural Complications

Pleural complications—including pleural effusion, hemothorax, pneumothorax, and empyema—occur in 22–34% of patients after transplantation [6, 7]. Existing pleural abnormalities before lung transplantation can predispose to pleural complications. For instance, pleural infection or inflammation can result from end-stage lung diseases for which lung transplantation is required such as cystic fibrosis. Invasive procedures required to diagnose (wedge biopsy)

or treat (pleurodesis or pleural drain for pneumothorax or pleural effusion) end-stage lung disease may result in pleural abnormalities. Pneumothorax is the most common pleural complication [7]



Fig. 19.2 A 43-year-old man with bilateral orthotopic lung transplant (BOLT) in 2010 for ciliary dyskinesia. Frontal chest radiograph obtained 4 days after transplantation shows diffuse lung disease, likely representing primary graft dysfunction or reperfusion pulmonary edema

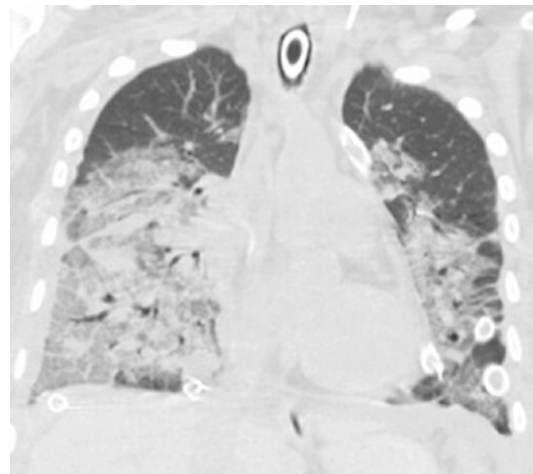


Fig. 19.3 A 30-year-old woman status post double lung transplant for cystic fibrosis. CT obtained 9 days after transplantation shows diffuse ground-glass opacity and consolidation, consistent with primary graft dysfunction. Bilateral chest tubes are in place

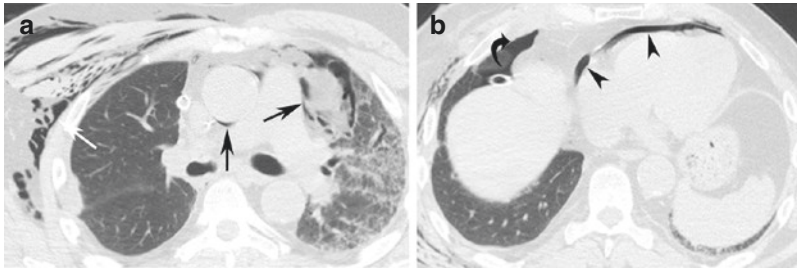


Fig. 19.4 (a, b) A 69-year-old man with single orthotopic lung transplant (SOLT) in 2015 for IPF. CT obtained 4 days after transplantation shows pneumomediastinum (black arrows in a), pneumothorax (curved arrow in b),

pneumopericardium (arrowheads in b), and subcutaneous emphysema (white arrow in a). The bronchial anastomosis was intact. Right chest tube is in place. Note fibrosis in native left lung

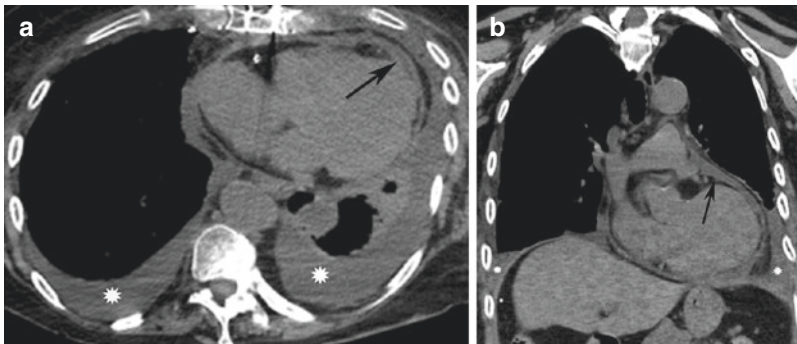


Fig. 19.5 (a, b) A 72-year-old woman with BOLT in 2013 for IPF. CT obtained 2 weeks after transplantation shows bilateral pleural effusions (asterisks a and b) with

associated compressive atelectasis in lower lobes. Small pericardial effusion is also present (arrows in a and b)

(Fig. 19.4a, b). Airway anastomotic complications should be suspected if pneumothorax persists or enlarges after the early postoperative period (>7 days after transplantation). Pleural effusion is also a common complication secondary to increased capillary permeability and impaired lymphatic drainage of the allograft lung during the early postoperative period (Fig. 19.5a, b). Pleural fluid in the immediate postoperative period is often hemorrhagic and becomes progressively less hemorrhagic by 7 days. Pleural effusion usually resolves by 2 weeks. Persistent or enlarging pleural effusion should raise suspicion for empyema or left heart failure. Hemothorax usually results from surgical complications (Fig. 19.6a, b). Persistent air leak, empyema, and hemothorax are associated with increased mortality and should be promptly recognized and managed [7, 8].

Intermediate Complications (8 Days to 2 Months) and Primary Late Complications (2–4 Months)

Acute Rejection

Acute rejection usually occurs after the second postoperative week and is classically caused by cell-mediated immune response. Approximately 80% of acute rejections occur in first 3 months, and 50% of patients have at least one episode of acute rejection in the first postoperative year [9, 10]. Repeated episodes of acute rejection are considered a risk factor for the development of chronic rejection [9, 11].

When present, radiographic manifestations are nonspecific and similar to primary graft dysfunction including ground-glass opacities, consolidation, interlobular septal thickening, and

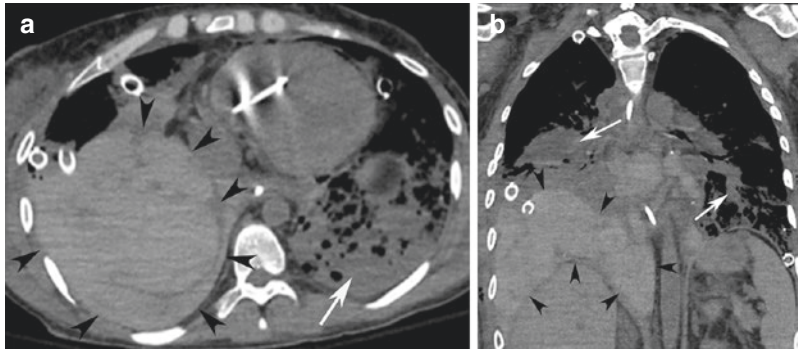


Fig. 19.6 (a, b) A 33-year-old woman with BOLT in 2015 for pulmonary arterial hypertension. CT obtained 2 days after transplantation shows high density material in

right pleural space (arrowheads in **a** and **b**), consistent with hemothorax. Consolidation in both lower lobes was presumably due to aspiration (arrows)

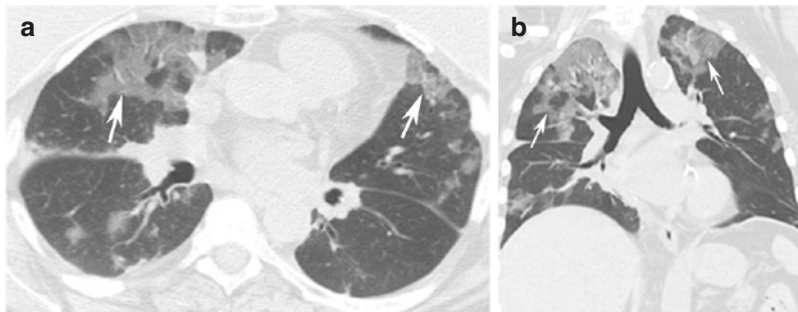


Fig. 19.7 (a, b) A 55-year-old woman with BOLT in 2013 for COPD. CT obtained 8 months after transplantation showed patchy ground-glass opacities (arrows in **a**

and **b**) bilaterally. Although a nonspecific pattern, the transbronchial biopsy was consistent with AOB1 ACR with all infectious testing negative

pleural effusion (Figs. 19.7a, b, 19.8, and 19.9a, b). Radiographic improvement within 48 h of administration of intravenous corticosteroids favors the diagnosis of acute rejection [9].

Airway Anastomotic Complications

Airway anastomotic complications include bronchial dehiscence, bronchial stenosis, or bronchomalacia. Reported incidence of airway complications is approximately 15%, but there has been a decrease in the airway complication rate due to the refinement in surgical technique, improvement in immunosuppression, and donor organ preservation technique [12]. The most important factor predisposing to airway complication is donor bronchus ischemia, due to disruption of the native bronchial circulation. Recurrent

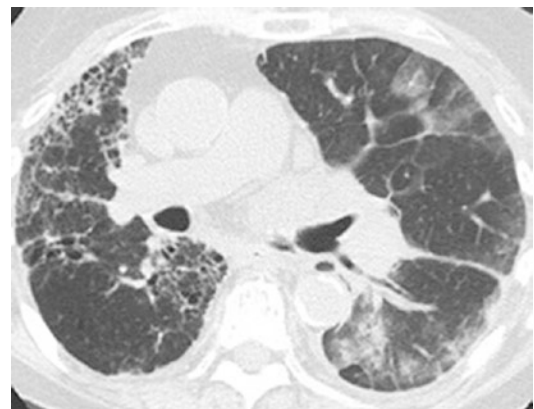


Fig. 19.8 A 69-year-old woman status post left lung transplant for chronic hypersensitivity pneumonitis. CT obtained 4 months after transplantation showed patchy ground-glass opacities in the allograft. Although a nonspecific pattern, the transbronchial biopsies revealed A2B0 acute cellular rejection. Note fibrosis in the native right lung

infection and rejection are some other contributing factors.

Bronchial dehiscence usually occurs in the first 2–4 weeks after transplantation affecting 2–3% patients [9]. CT usually shows extraluminal

nal foci of air in perianastomotic region, and occasionally bronchial defects can be visualized (Figs. 19.10a–c, 19.11a, b, and 19.12a, b). Indirect signs include persistent or enlarging air leak, pneumothorax, or pneumomediastinum.

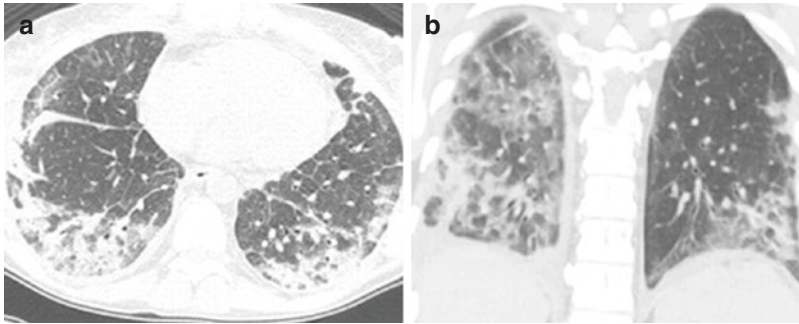


Fig. 19.9 (a, b) A 34-year-old woman status post BOLT for PAH. CT obtained 4 months after transplantation showed ground-glass opacity and consolidation bilaterally

predominantly in the lower lobes. Although a nonspecific pattern, transbronchial biopsies revealed A3B1R acute cellular rejection

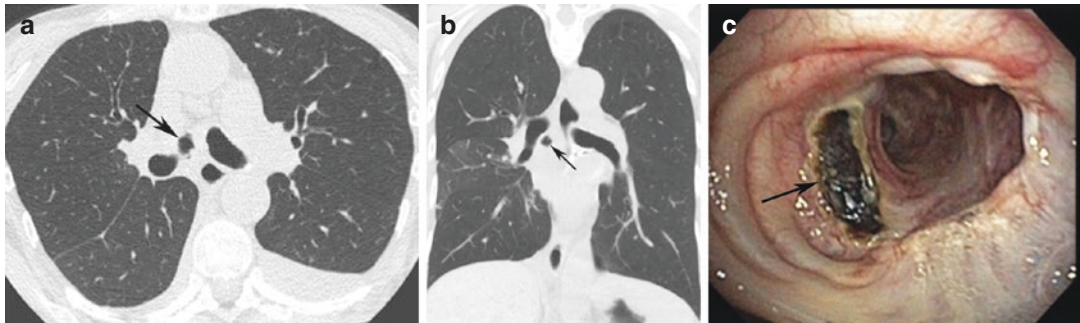


Fig. 19.10 (a–c) A 57-year-old woman with BOLT in 2015 for alpha-1 antitrypsin deficiency. CT obtained 6 weeks after transplantation showed small pocket of extraluminal air (arrows in a and b) adjacent to right mainstem

bronchus, consistent with bronchial anastomotic dehiscence. This was confirmed on bronchoscopy that shows necrotic plaque on medial right mainstem bronchus (arrow in c)

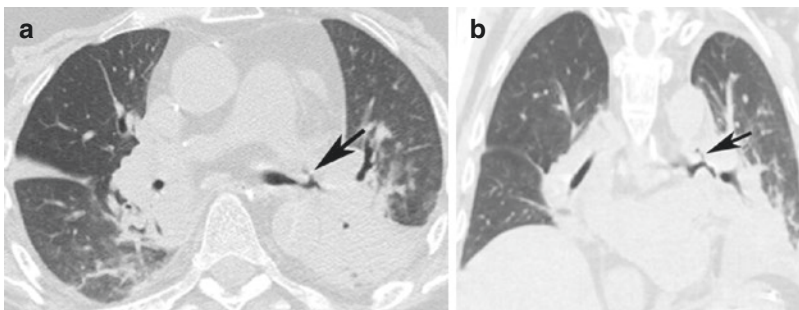


Fig. 19.11 (a, b) A 62-year-old man status post double lung transplant for sarcoidosis. CT obtained 3 weeks after transplantation shows air tracking from the left mainstem

bronchus (arrows in a and b), consistent with dehiscence. Note collapse of left lower lobe

Fig. 19.12 (a, b) A 65-year-old man status post double lung transplant for IPF. CT obtained 3 weeks after transplantation showed right mainstem bronchus dehiscence (arrows in **a** and **b**) tracking into the right pleural space suggestive of bronchopleural fistula (arrowhead in **b**)

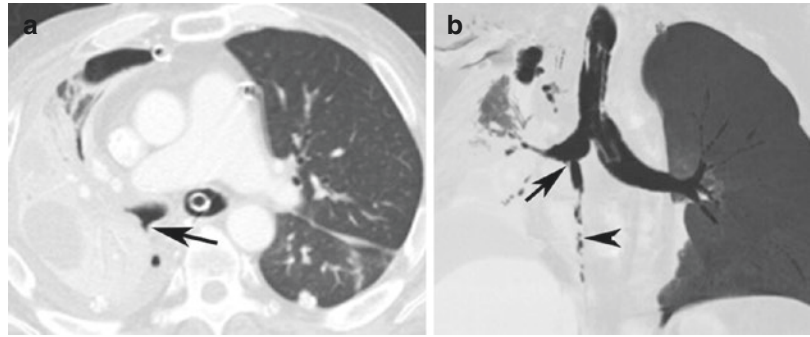
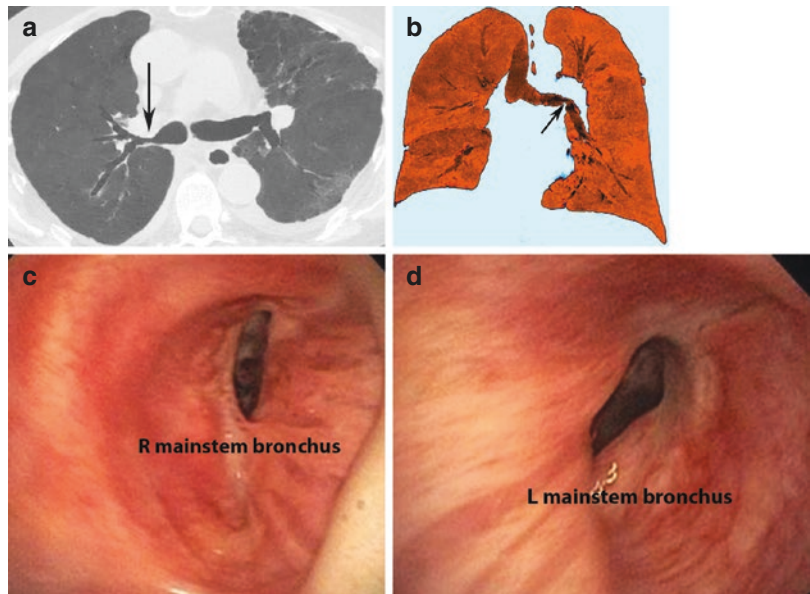


Fig. 19.13 (a–d) A 69-year-old man with BOLT in 2009 for IPF. Axial MinIP (a) shows anastomotic narrowing of right mainstem bronchus. Coronal reformation (b) shows narrowing of the left mainstem bronchus distal to anastomosis. Bronchoscopic images confirming narrowing of the right (c) and left (d) mainstem bronchi



Bronchial dehiscence may resolve spontaneously or progress to bronchial stenosis.

Bronchial stenosis and bronchomalacia are late complications usually occurring at least 2–4 months after transplantation. Bronchial stenosis occurs in 10% of subjects and is usually seen at the anastomotic site or distally [13]. CT shows bronchial irregularity and focal stenosis (Figs. 19.13a–d and 19.14a, b). Management includes resection of the granulation tissue and balloon dilation with or without stenting. Bronchomalacia or transient airway narrowing can be diagnosed with bronchoscopy or CT. Inspiratory and expiratory CT images are invaluable in the diagnosis of bronchomalacia (Fig. 19.15a, b). A diagnosis is suggested when there is more than 50 (liberal) to 70% (conserva-

tive) dynamic narrowing of the airway or lunate shape of the airway on expiration.

Vascular Anastomotic Complications

Vascular anastomotic complications are uncommon. Pulmonary artery stenosis is more common than pulmonary vein stenosis. It can occur in the early or late postoperative period [14]. Contrast-enhanced CT angiogram is the best available noninvasive modality to assess narrowing or occlusion of the anastomotic site. This may cause pulmonary infarction more readily due to the absence of bronchial artery circulation in the early postoperative period. Treatment options include angioplasty and stenting.

Fig. 19.14 (a, b) A 62-year-old man with BOLT in 2014 for COPD. CT shows diffuse stenosis of bronchus intermedius (arrow in a). Patient underwent bronchial dilation and stenting (arrow in b)

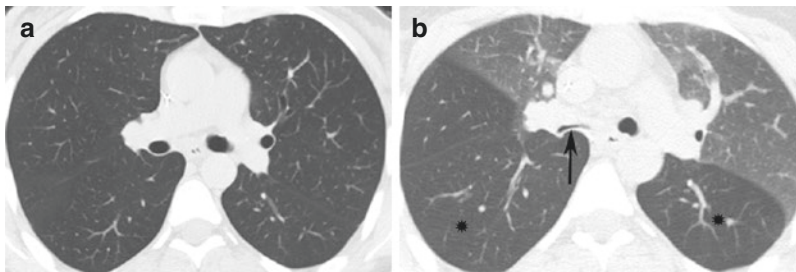
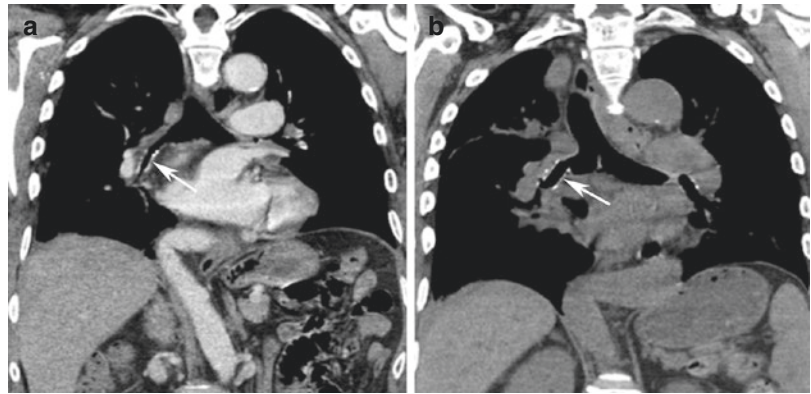


Fig. 19.15 (a, b) A 34-year-old woman with BOLT in 2006 for CF. CT during inspiration (a) and expiration (b) shows severe collapse of the bronchus intermedius during

expiration (arrow in b) indicating bronchomalacia. Note air trapping in both lower lobes (asterisks in b)

Infections

Infection is the most common complication and a leading cause of morbidity and mortality after lung transplantation. Patients are at increased risk of infection because of immunosuppression, impaired mucociliary clearance, absence of cough reflex, disruption of lymphatic drainage, and direct communication between the allograft and the atmosphere.

Infectious risks vary based on factors which include the time elapsed since transplantation. Bacterial infections are the most common cause of pneumonia with incidence highest in the first 4 weeks after lung transplantation [15]. Gram-negative organisms such as *Klebsiella* species and *Pseudomonas aeruginosa* are common causative agents. Infection by gram-positive organisms including *Staphylococcus aureus* is also observed. During the first postoperative month, 35–70% recipients develop bacterial pneumonia [16]. Imaging features are similar to

the non-transplant population and include lobar or multifocal consolidation, ground-glass opacity, nodules, and pleural effusion [13, 15, 17] (Fig. 19.16a, b).

Fungal infections are caused by *Aspergillus* and less commonly by the *Candida* species. *Pneumocystis pneumonia* is uncommon these days because of routine chemoprophylaxis. Fungal infections can occur at any time but usually peak between 10 and 60 days after transplantation. These are less common but carry higher mortality compared to bacterial or viral infections. Patterns of fungal infection include angioinvasive pulmonary infection, ulcerative tracheobronchitis, and bronchial anastomosis infection [16]. CT in angioinvasive fungal infection shows ill-defined nodules or mass-like consolidation with surrounding ground-glass opacity (halo sign) indicating hemorrhage [13, 15] (Fig. 19.17a, b). On CT tracheobronchitis shows diffuse central airway wall thickening and surrounding mediastinal fat stranding. Bronchial

Fig. 19.16 (a, b) A 71-year-old man with BOLT in 2013 for COPD. CT shows bilateral peribronchial consolidation. BAL fluid grew *Pseudomonas* and MSSA

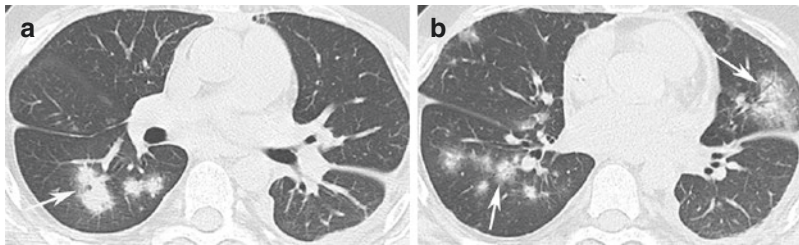
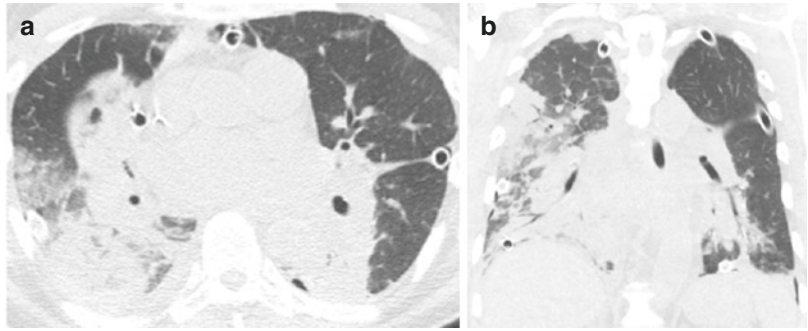


Fig. 19.17 (a, b) A 34-year-old man with BOLT in 2009 for pulmonary fibrosis after hematopoietic stem cell transplantation for acute lymphoblastic leukemia. CT shows

multiple irregular nodules with peripheral ground-glass halo (arrows in a and b). BAL fluid grew *Aspergillus Fumigatus*

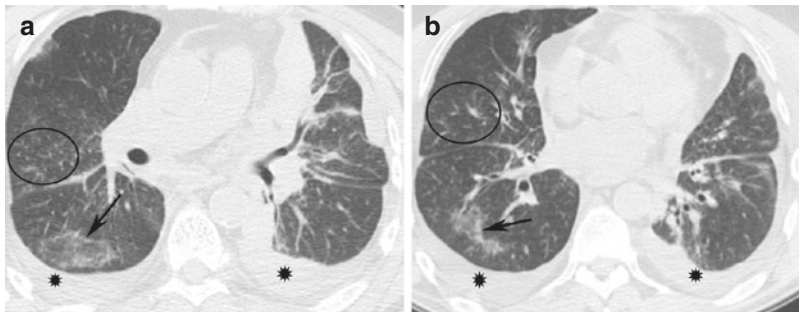


Fig. 19.18 (a, b) A 59-year-old man with BOLT in 2015 for IPF. CT shows patchy ground-glass opacity (arrows in a and b) and centrilobular nodules (circle in a

and b). Viral PCR panel was positive for coronavirus and adenovirus. Note bilateral pleural effusions (asterisks in a and b)

anastomosis infection can cause bronchial dehiscence and show small foci of extra-luminal air adjacent to the airways.

Cytomegalovirus (CMV) is the most common opportunistic infection and the second most common cause of pneumonia in lung transplantation patients. CMV pneumonia usually occurs between 1 and 6 months from transplantation [13]. CMV-seronegative recipients who receive CMV-seropositive donor lungs are at increased

risk for developing primary infection. CT shows varying patterns including ground-glass opacity, centrilobular nodules with tree-in-bud pattern, consolidation, and interlobular septal thickening [13, 17] (Fig. 19.18a, b). In addition to CMV, other community acquired viruses such as adenovirus, respiratory syncytial virus (RSV), and influenza and parainfluenza viruses may infect lung transplant recipients. Viral infections can predispose lung transplant recipients to

obliterative bronchiolitis [18, 19], a manifestation of chronic rejection.

Secondary Late Complications (>4 Months)

Chronic Rejection

Chronic rejection is a clinicopathologic syndrome most often characterized by obliterative bronchiolitis, affecting 50% of lung transplant recipients at 5 years [20], and the term bronchiolitis obliterans syndrome (BOS) is used to describe the clinical situation. It is a major factor limiting the long-term survival in lung transplant recipients. It usually occurs 6 months after transplantation, and risk factors include prior episodes of recurrent acute rejection or infections, particularly CMV pneumonia. Obliterative bronchiolitis is the most common histologic pattern seen in BOS and manifests as eosinophilic hyaline fibrosis in respiratory bronchiolar walls with luminal occlusion [20]. Due to patchy distribution of the disease, transbronchial biopsy may be negative. In such cases diagnosis is made clinically on the basis of otherwise unexplained, persistent decrease in FEV1 indicative of

small airway disease. Pulmonary function tests classically show an obstructive pattern, but combined obstruction and restriction may be seen [21]. High-resolution CT shows bronchial wall thickening, bronchiectasis, and heterogeneous areas of hyperlucent (dark) interspersed with adjacent normal lung parenchyma (mosaic attenuation) that is accentuated in exhalation images. Thus, it is very important to obtain paired inspiratory and expiratory HRCT images when chronic rejection is suspected clinically. On expiration HRCT, normal lung parenchyma becomes greyer, and hyperlucent (pathologic) lung remains dark indicating air trapping (Figs. 19.19a, b and 19.20a, b). Thus, the differentiation between normal and abnormal lung becomes more pronounced on expiration CT [13, 22].

Organizing Pneumonia Pattern

Organizing pneumonia pattern similar to patients with cryptogenic organizing pneumonia occurs in 10–28% of patients after lung transplantation and may be associated with both acute and chronic rejection [15, 23] or may represent infection. It is characterized by the presence of inflam-

Fig. 19.19 (a, b) A 33-year-old woman with BOLT in 2007 for cystic fibrosis. CT during inspiration (a) and expiration (b) shows patchy areas of air trapping (asterisks in b), consistent with BOS

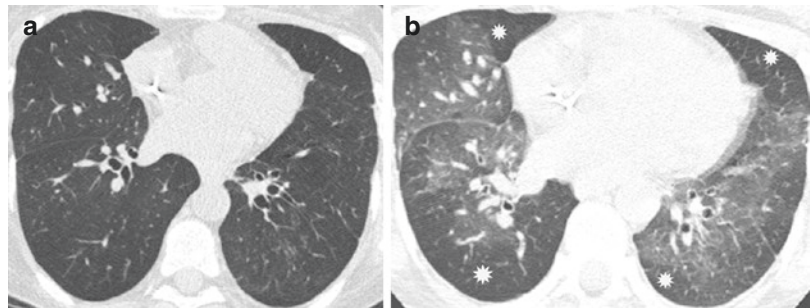
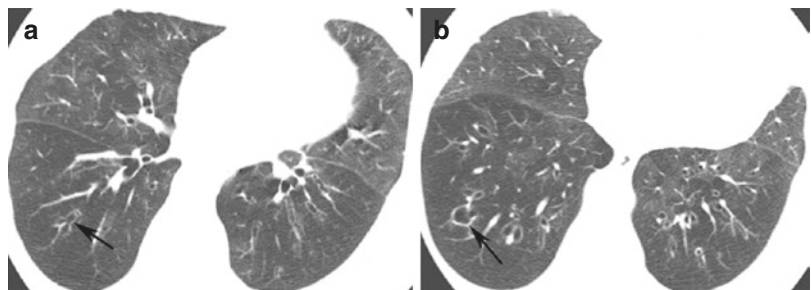


Fig. 19.20 (a, b) A 72-year-old woman with BOLT in 2013 for IPF. CT shows bronchiectasis (arrows in a and b) and mosaic attenuation, consistent with obliterative bronchiolitis indicating chronic lung allograft dysfunction of the BOS variety



matory granulation tissues within the alveoli, alveolar sacs, and ducts. It responds rapidly to high-dose corticosteroids. Bronchoscopy is often done to exclude infection before starting on high-dose corticosteroids. CT shows peripheral, peribronchovascular, or perilobular consolidation (Fig. 19.21). Frequently, peripheral arc-like consolidation with central ground-glass opacity (reverse halo/atoll sign) is seen [15, 24].

Post-transplant Lymphoproliferative Disorders (PTLD)

Post-transplant lymphoproliferative disorder is a spectrum of disease varying from benign lymphoid hyperplasia to high-grade lymphoma. It



Fig. 19.21 A 59-year-old woman with BOLT in 2013 for scleroderma-associated ILD. CT shows peripheral (arrowheads) and peribronchial (arrow) consolidation. Transbronchial biopsy showed organizing pneumonia pattern without infection

typically manifests within 1 year after transplantation but can be seen from 1 month to several years after transplantation. PTLD risk is increased significantly in Epstein-Barr virus (EBV) seronegative recipients receiving lungs from seropositive donors. The other major risk factor is augmented immunosuppression. Incidence varies between 2.8 and 6% at 1 year after transplantation [25, 26]. It is more common with lung transplantation than with other solid organ transplantation. The majority of cases of PTLD is of B cell origin and associated with EBV primary infection. A much smaller proportion of PTLDs are of T cell origin, Hodgkin's type, or, rarely, plasma cell type such as multiple myeloma. These categories are more likely to be EBV-negative. EBV-associated PTLD presents early (within 1 year), usually has a benign course and is intrathoracic, whereas EBV-negative PTLD presents late (median onset 50–60 months post-transplant), generally more aggressive and extrathoracic. Early disease responds to antiviral therapy and reduction in immunosuppression. Late disease generally requires chemotherapy and radiation therapy [25]. CT shows solitary or multiple nodules with peripheral and basal predominant distribution (Figs. 19.22a, b and 19.23a, b). Mass-like consolidation and mediastinal and hilar lymphadenopathy are also commonly seen. Rarely, interlobular septal thickening can be seen. Pleural and chest wall masses with or without pleural effusion and/or pericardial effusion have been described [27, 28]. Biopsy is often needed to differentiate PTLD from infection [29, 30].

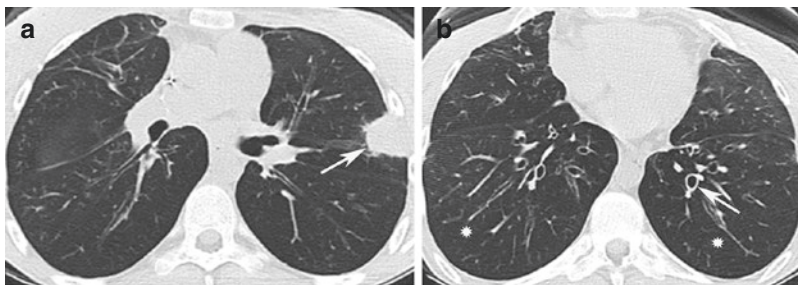


Fig. 19.22 (a, b) A 23-year-old woman with BOLT in 2010 for CF. CT shows mass-like consolidation in left upper lobe (arrow in a). CT-guided biopsy was obtained, and histopathology was consistent with post-transplant

lymphoproliferative disorder (PTLD). CT also shows bronchiectasis (arrow in b) and air trapping, consistent with chronic lung allograft dysfunction

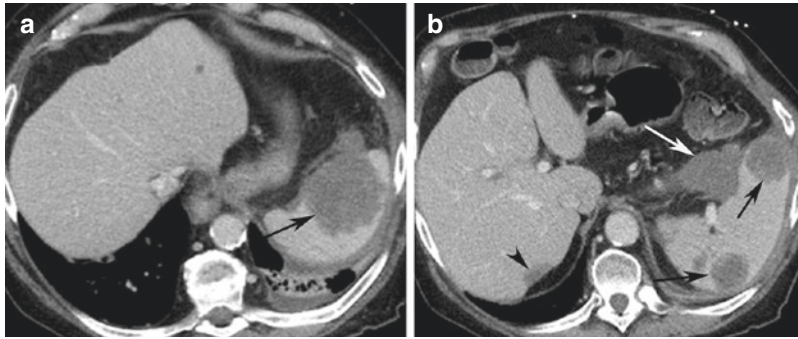
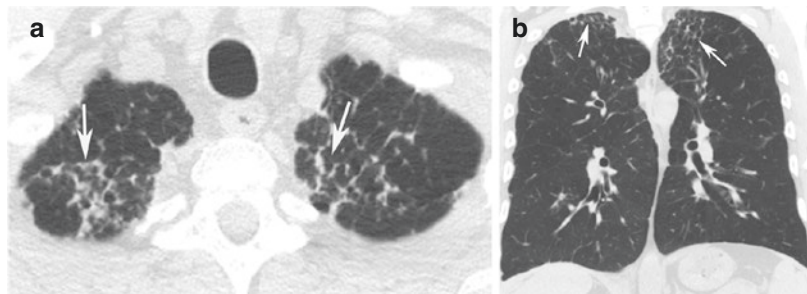


Fig. 19.23 (a, b) A 73-year-old man with BOLT in 2005 for COPD. CT shows low-density soft tissue masses in the spleen (black arrows in **a** and **b**), liver (arrowhead in **b**),

and perisplenic (white arrow in **b**) region. Histopathology was consistent with PTLD

Fig. 19.24 (a, b) A 41-year-old man with BOLT in 2005 for CF. CT shows bilateral upper lung fibrosis (arrows in **a** and **b**) indicating chronic lung allograft dysfunction (CLAD) of the restrictive physiology



Upper Lobe Fibrosis

Upper lobe fibrosis is uncommon and occurs 1–4 years after transplantation. The exact cause for this is unknown but is described as a component of chronic allograft dysfunction (CLAD) demonstrating restrictive physiology hypothesized to be a variant of chronic rejection [21, 31]. Clinically, patients present with restrictive allograft syndrome (RAS), which is marked by restrictive pulmonary function testing and often demonstrates a more aggressive and treatment-refractory course compared to obliterative bronchiolitis. CT shows interlobular septal thickening, traction bronchiectasis, volume loss, and architectural distortion [31] (Fig. 19.24a, b).

Recurrence of Primary Disease

Recurrence of primary disease in transplanted lungs is uncommon with reported incidence of 1% [32]. Sarcoidosis is the most common disease

recurring after transplantation reported in approximately 35% of patients [32, 33]. Other diseases that can recur include lymphangioleiomyomatosis (LAM), pulmonary Langerhans cell histiocytosis (PLCH), pulmonary alveolar proteinosis (PAP), and multifocal adenocarcinoma (previously bronchioloalveolar carcinoma). Recurrence of primary disease has been reported as early as 2 weeks and as late as 2 years after transplantation. The radiologic manifestations are similar to primary disease [32].

Transbronchial Biopsy Associated Complications

Bronchoscopy and transbronchial biopsy are frequently performed after lung transplantation to aide in the diagnosis of the various aforementioned complications [34]. Transbronchial biopsy itself can lead to various complications including pneumothorax, hemothorax, and pulmonary hemorrhage. Solid and cavitory nodules with

surrounding ground-glass opacity may be an incidental finding in the allograft up to 1 month as a result of transbronchial biopsy in the corresponding location, and thus such a finding must be interpreted with caution and not confused with a fungal infection [35]. The temporal relationship to biopsy and location of nodules at the known biopsy sites helps distinguish these nodules from infection.

Summary

A wide spectrum of complications with overlapping radiologic findings may occur after lung transplantation. Familiarity with radiologic appearance of these complications in correlation with clinical manifestations and time course since transplantation is very helpful in the management of these patients. The threshold for performing CT should be low to detect infections in this immunocompromised population at an early stage. CT protocols should be tailored to suspected complications such as performing inspiration and expiration CT when chronic allograft dysfunction is suspected and performing CT angiogram when vascular complications are suspected. Accurate tailoring of CT protocols increases the yield of imaging and is useful in appropriate retrieval of specimens/samples from abnormal airways and pulmonary parenchyma in identifying the specific pathology. Follow-up imaging is essential and is guided by patient's clinical course and pulmonary function tests.

References

1. Yusen RD, Edwards LB, Kucheryavaya AY, Benden C, Dipchand AI, Dobbels F, et al. The registry of the International Society for Heart and Lung Transplantation: thirty-first adult lung and heart-lung transplant report--2014; focus theme: retransplantation. *J Heart Lung Transplant.* 2014;33(10):1009–24.
2. Frost AE. Donor criteria and evaluation. *Clin Chest Med.* 1997;18(2):231–7.
3. Kuno R, Kanter KR, Torres WE, Lawrence EC. Single lung transplantation followed by contralateral bullectomy for bullous emphysema. *J Heart Lung Transplant.* 1996;15(4):389–94.
4. Frost AE, Jammal CT, Cagle PT. Hyperacute rejection following lung transplantation. *Chest.* 1996;110(2):559–62.
5. Kundu S, Herman SJ, Winton TL. Reperfusion edema after lung transplantation: radiographic manifestations. *Radiology.* 1998;206(1):75–80.
6. Herridge MS, de Hoyos AL, Chaparro C, Winton TL, Kesten S, Maurer JR. Pleural complications in lung transplant recipients. *J Thorac Cardiovasc Surg.* 1995;110(1):22–6.
7. Ferrer J, Roldan J, Roman A, Bravo C, Monforte V, Pallissa E, et al. Acute and chronic pleural complications in lung transplantation. *J Heart Lung Transplant.* 2003;22(11):1217–25.
8. Arndt A, Boffa DJ. Pleural space complications associated with lung transplantation. *Thorac Surg Clin.* 2015;25(1):87–95.
9. King-Biggs MB. Acute pulmonary allograft rejection. Mechanisms, diagnosis, and management. *Clin Chest Med.* 1997;18(2):301–10.
10. Christie JD, Edwards LB, Aurora P, Dobbels F, Kirk R, Rahmel AO, et al. The Registry of the International Society for Heart and Lung Transplantation: twenty-sixth official adult lung and heart-lung transplantation report-2009. *J Heart Lung Transplant.* 2009;28(10):1031–49.
11. Knoop C, Estenne M. Acute and chronic rejection after lung transplantation. *Semin Respir Crit Care Med.* 2006;27(5):521–33.
12. Alvarez A, Algar J, Santos F, Lama R, Aranda JL, Baamonde C, et al. Airway complications after lung transplantation: a review of 151 anastomoses. *Eur J Cardiothorac Surg.* 2001;19(4):381–7.
13. Ng YL, Paul N, Patsios D, Walsham A, Chung TB, Keshavjee S, et al. Imaging of lung transplantation: review. *AJR Am J Roentgenol.* 2009;192(3 Suppl):S1–13, quiz S4–9.
14. Clark SC, Levine AJ, Hasan A, Hilton CJ, Forty J, Dark JH. Vascular complications of lung transplantation. *Ann Thorac Surg.* 1996;61(4):1079–82.
15. Krishnam MS, Suh RD, Tomasian A, Goldin JG, Lai C, Brown K, et al. Postoperative complications of lung transplantation: radiologic findings along a time continuum. *Radiographics.* 2007;27(4):957–74.
16. Avery RK. Infections after lung transplantation. *Semin Respir Crit Care Med.* 2006;27(5):544–51.
17. Collins J, Muller NL, Kazerooni EA, Paciocco G. CT findings of pneumonia after lung transplantation. *AJR Am J Roentgenol.* 2000;175(3):811–8.
18. Paraskeva M, Bailey M, Levvey BJ, Griffiths AP, Kotsimbos TC, Williams TP, et al. Cytomegalovirus replication within the lung allograft is associated with bronchiolitis obliterans syndrome. *Am J Transplant.* 2011;11(10):2190–6.
19. Collins J. Imaging of the chest after lung transplantation. *J Thorac Imaging.* 2002;17(2):102–12.
20. Estenne M, Maurer JR, Boehler A, Egan JJ, Frost A, Hertz M, et al. Bronchiolitis obliterans syndrome 2001: an update of the diagnostic criteria. *J Heart Lung Transplant.* 2002;21(3):297–310.

21. Verleden GM, Raghu G, Meyer KC, Glanville AR, Corris P. A new classification system for chronic lung allograft dysfunction. *J Heart Lung Transplant*. 2014;33(2):127–33.
22. Lee ES, Gotway MB, Reddy GP, Golden JA, Keith FM, Webb WR. Early bronchiolitis obliterans following lung transplantation: accuracy of expiratory thin-section CT for diagnosis. *Radiology*. 2000;216(2):472–7.
23. Chaparro C, Chamberlain D, Maurer J, Winton T, Dehoyos A, Kesten S. Bronchiolitis obliterans organizing pneumonia (BOOP) in lung transplant recipients. *Chest*. 1996;110(5):1150–4.
24. Arakawa H, Kurihara Y, Niimi H, Nakajima Y, Johkoh T, Nakamura H. Bronchiolitis obliterans with organizing pneumonia versus chronic eosinophilic pneumonia: high-resolution CT findings in 81 patients. *AJR Am J Roentgenol*. 2001;176(4):1053–8.
25. Reams BD, McAdams HP, Howell DN, Steele MP, Davis RD, Palmer SM. Posttransplant lymphoproliferative disorder: incidence, presentation, and response to treatment in lung transplant recipients. *Chest*. 2003;124(4):1242–9.
26. Paranjothi S, Yusen RD, Kraus MD, Lynch JP, Patterson GA, Trulock EP. Lymphoproliferative disease after lung transplantation: comparison of presentation and outcome of early and late cases. *J Heart Lung Transplant*. 2001;20(10):1054–63.
27. Carignan S, Staples CA, Muller NL. Intrathoracic lymphoproliferative disorders in the immunocompromised patient: CT findings. *Radiology*. 1995;197(1):53–8.
28. Dodd GD III, Ledesma-Medina J, Baron RL, Fuhrman CR. Post-transplant lymphoproliferative disorder: intrathoracic manifestations. *Radiology*. 1992;184(1):65–9.
29. Scarsbrook AF, Warakaulle DR, Dattani M, Traill Z. Post-transplantation lymphoproliferative disorder: the spectrum of imaging appearances. *Clin Radiol*. 2005;60(1):47–55.
30. Rappaport DC, Chamberlain DW, Shepherd FA, Hutcheon MA. Lymphoproliferative disorders after lung transplantation: imaging features. *Radiology*. 1998;206(2):519–24.
31. Konen E, Weisbrod GL, Pakhale S, Chung T, Paul NS, Hutcheon MA. Fibrosis of the upper lobes: a newly identified late-onset complication after lung transplantation? *AJR Am J Roentgenol*. 2003;181(6):1539–43.
32. Collins J, Hartman MJ, Warner TF, Muller NL, Kazerooni EA, McAdams HP, et al. Frequency and CT findings of recurrent disease after lung transplantation. *Radiology*. 2001;219(2):503–9.
33. Kazerooni EA, Jackson C, Cascade PN. Sarcoidosis: recurrence of primary disease in transplanted lungs. *Radiology*. 1994;192(2):461–4.
34. Boehler A, Vogt P, Zollinger A, Weder W, Speich R. Prospective study of the value of transbronchial lung biopsy after lung transplantation. *Eur Respir J*. 1996;9(4):658–62.
35. Kazerooni EA, Cascade PN, Gross BH. Transplanted lungs: nodules following transbronchial biopsy. *Radiology*. 1995;194(1):209–12.