

A Novel Track Initiation Method Based on Prior Motion Information and Hough Transform

Jun Liu¹, Yu Liu^{1,2(✉)}, and Wei Xiong¹

¹ Research Institute of Information Fusion, Naval Aeronautical and Astronautical University,
Yantai 264001, China
18615042187@163.com, liuyu77360132@126.com, xiongwei@csif.org.cn

² School of Electronic and Information Engineering, Beihang University,
Beijing 100191, China

Abstract. This paper deals with the problem of track initiation in dense clutters. A novel Hough transform method based on prior motion information is proposed. Firstly, with time sequence of the measurements and targets' kinematic information considered, the single scan data accumulation effect is avoided, and the initiated tracks are more reliable. Then, measurements in observation space only vote to part of the lines that pass through them, which can effectively reduce the computational cost, and improve the initiation speed. Simulation results indicate that the proposed method is superior to the traditional algorithms in terms of detection probability, computational cost and robustness.

Keywords: Track initiation · Prior information · Hough transform · Target tracking

1 Introduction

Track initiation is the primary problem of multi-target tracking, especially for establishing the records for new targets and terminating the records of inexistent targets [1, 2]. Because of the long distance between the radar and targets, it is hard for the targets to be accurately measured by sensors, and there is no statistical rule to judge whether the measure is from target or clutter, track initiation itself is a very difficult issue. It is hoped that target tracks are initiated as early as possible, because the operators can get an early situation picture for the surveillance area. On the other hand, it is hoped that false track initiation rate is as low as possible. False tracks cause waste of radar resources, because radar beams for track maintenance are assigned to the area where there is no target [3]. In addition, to detect modern dim targets, radar needs to lower the threshold. Therefore, the false alarm rate will be very high, and how to deal with the track initiation of targets moving in such circumstance has been a challenging task now.

2 Review of Current Techniques

During the past several decades, a lot of research has been contributed to track initiation, and there are two main series, one is sequential data processing technique, such as the heuristic rule method [4], logic-based method [1]; another is batch data processing technique, such as multiple hypothesis tracking method [5], integrated probabilistic data association algorithm [6], the Hough transform technique [7], and the modified Hough transform technique [8]. The former method has low computational cost, and is easy to apply. However, it is just suitable for initiation in sparse clutter. Though the latter method has a better performance than the former method, and is effective in reducing false alarm probability, it has much more computational cost than the former method, in addition, it is difficult to apply.

As is known, Hough Transform has low sensitivity to local fault and good ability in suppressing noise and clutters. Because of this advantage, it has been widely applied to track initiation in dense clutter environment. As a batch data processing method, Hough transform has the disadvantage of huge computation and memory. A lot of research has been done to reduce computation and memory by researchers, and many advanced methods have been put forward, such as modified Hough transform, random Hough transform, etc. A novel method for fast track initiation in dense clutters by divide and Hough transform method is proposed in this paper and this method is very effective in decreasing computation and memory. The measurement's time sequence information and targets' kinematics information also have been effectively utilized.

3 Our Approach

For Hough Transform, any point in data space is corresponding to the only one curve in parameter space, and points of the same line in data space are corresponding to different curves in parameter space, and those curves intersect at one point in parameters. If A_i, A_{i+1}, A_{i+2} denotes as an echo in the i th, $(i+1)$ th, $(i+2)$ th scan respectively, then A_i and A_{i+1} are connected to form a line $\overline{A_i A_{i+1}}$, which is corresponding to a point C_1 in parameter space with Hough Transform. In the same way, A_{i+1} and A_{i+2} are connected to form a line $\overline{A_{i+1} A_{i+2}}$, which is corresponding to a point C_2 in parameter space with Hough Transform. If A_i, A_{i+1}, A_{i+2} are collinear, C_1 and C_2 must coincide as shown in Fig. 1. If A_i, A_{i+1}, A_{i+2} are approximately collinear, then C_1 and C_2 will be very close, conversely, they will be far apart. According to this principle, a track can be detected through the intensive degree of point distribution in parameter space.

In this new method, any two observed data from different cycles is connected, which avoids loss of echo data. If only observed data from two adjacent cycles can be connected, when the target echo appears flashing, for example, a target echo is lost every other cycle, then echo data from two adjacent cycles can not be connected, which will cause loss of target information. However, not all observed data from two different cycles are from the same target, only when distance between the two points satisfies

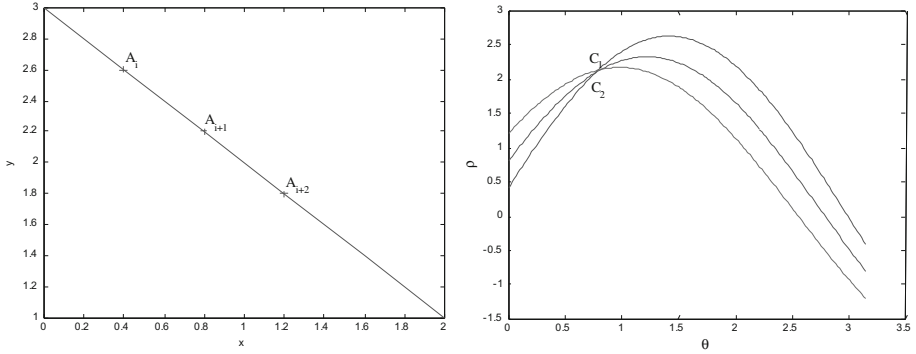


Fig. 1. Three collinear points and the corresponding curves

some condition, they can be from the same target. If $z_1(x_1, y_1)$, $z_2(x_2, y_2)$ is the measurement in time t_1 , t_2 respectively, then distance between the two points is

$$d = \sqrt{(x_2 - x_1)^2 + (y_2 - y_1)^2} \tag{1}$$

where d is the distance. Then the average speed is

$$v = \frac{d}{|t_2 - t_1|} \tag{2}$$

where v denotes as the average speed. If v satisfies

$$v_{\min} \leq v \leq v_{\max} \tag{3}$$

z_1 and z_2 can be from the same target. In formula (3), v_{\min} and v_{\max} denote as the minimum and maximum speed of the target respectively. Through this process, the number of combinations is greatly reduced. If z_1 and z_2 satisfy the above condition, then the corresponding curve through Hough Transform in parameter space is

$$\begin{cases} \rho = x_1 \cos(\theta) + y_1 \sin(\theta), \\ \rho = x_2 \cos(\theta) + y_2 \sin(\theta). \end{cases} \tag{4}$$

By solving Eq. (4), the intersection of the line consisting of z_1 and z_2 in parameter space is

$$\tan \theta = -\frac{x_2 - x_1}{y_2 - y_1} \tag{5}$$

Let $a = -\frac{x_2 - x_1}{y_2 - y_1}$, because $\theta \in [0, \pi]$, then

$$\theta = \begin{cases} -\arctan(a) & a > 0, \\ -\arctan(a) + \pi & a \leq 0. \end{cases} \quad (6)$$

Bring formula (6) back into Eq. (4), ρ is obtained.

$$\rho = \frac{|x_2y_1 - x_1y_2|}{d} \quad (7)$$

During the initiation period, targets are far away from sensors, so they are often thought to move in a straight line. According to the above discussion, any two measurements from a target must be mapped to the same (ρ, θ) in the parameter space. However, because of target's motion and measurement error, it is impossible that all (ρ, θ) is the same, but they will be concentrated in a small area. These small areas can be detected through the density of point distribution in the parameter space, and then the corresponding tracks are detected.

Suppose there are N intersections in parameter space, to detect target trajectory from observed data, the $\rho - \theta$ parameter space is equidistantly quantized into $N_\rho \times N_\theta$ cells with distance interval $\Delta\rho$ and angle interval $\Delta\theta$. Define parameter space array according to $\Delta\rho$ and $\Delta\theta$, if an intersection votes to accumulated cell $A(k, l)$, $A(k, l) = A(k, l) + 1$. Search for the peak values in accumulated cells, and N_ξ denotes as the threshold. If $A(k, l)$ satisfies

$$A(k, l) > N_\xi \quad (8)$$

output the corresponding observed data as the initial tracks of targets.

4 Simulation and Results

In this section, suppose the surveillance area is 100000 m long and 100000 m wide. And assume 5 targets move in a straight line with constant velocity, and these targets are tracked with 2D radar. The initial position of 5 targets are (55000 m, 55000 m), (45000 m, 45000 m), (35000 m, 35000 m), (45000 m, 25000 m), (55000 m, 15000 m), and 5 targets move in the same speed, $v_x = 500$ m/s, $v_y = 0$ m/s. And assume radar's PRI is $T = 5$ s, azimuth observation square root error is $\sigma_\theta = 0.3^\circ$, while distance observation square root error is $\sigma_r = 40$ m. For a fair comparison, we make $N' = 100$ independent Monte Carlo runs, and the number of false measurements in the surveillance area satisfies the passion distribution with density λ .

Define the false track initiation probability as

$$P_F \triangleq \frac{\sum_{i=1}^{N'} f_i}{\sum_{i=1}^{N'} n_i} \quad (9)$$

where N' is the number of Monte Carlo simulation, f_i is number of false tracks in i^{th} Monte Carlo simulation, and n_i is number of all tracks in i^{th} Monte Carlo simulation.

In the same way, the detection probability of target t is given as

$$P_D = \frac{\sum_{t=1}^{N_t} \sum_{i=1}^{N'} l_{it}}{N_t \times N'} \quad (10)$$

where l_{it} indicates whether track of target t is correctly initiated in i^{th} Monte Carlo simulation, and l_{it} is defined as

$$l_{it} = \begin{cases} 1 & \text{if target } t \text{ is correctly initiated,} \\ 0 & \text{else.} \end{cases} \quad (11)$$

As is seen from Table 1, with the increase of clutters, when $\lambda = 100$, there are many false tracks in the former 4 algorithms. Especially in HT method, a great number of false tracks make it impossible to detect the exact tracks for targets. All these false tracks will cause a lot of trouble for subsequent target tracking and waste of radar resources. However, the method proposed in this paper is very robust to clutter interference, which can correctly initiate targets' tracks and suppress false tracks generated by clutters.

Table 1. Performance comparison of 5 track initiation methods

Track initiation method		P_D	P_F
$\lambda = 50$	The heuristic rule method	82.3 %	57.6 %
	The logic-based method	82.5 %	58.7 %
	The HT method	12.1 %	88.6 %
	The modified HT method	85.2 %	44.8 %
	The proposed method	89.3 %	38.5 %
$\lambda = 100$	The heuristic rule method	20.4 %	82.7 %
	The logic-based method	25.2 %	76.3 %
	The HT method	0.1 %	95.2 %
	The modified HT method	45.3 %	64.2 %
	The proposed method	63.2 %	42.1 %

For all these methods, the proposed method always keeps the highest probability of detection in both simulation scenarios. Even when $\lambda = 100$, it still keeps 63.2 %, while the highest detection probability of the remaining methods is 45.3 %. These simulation results indicate that the new method has a superior performance for track initiation, and is very robust to clutter interference.

To further validate the effectiveness of the proposed algorithm, describes the computational cost for methods based on Hough transform. From the table we know that the proposed method is less computational than the HT method and the modified HT method, and is more suitable for fast track initiation in dense clutters (Table 2).

Table 2. Comparison of computational cost for HT based methods

Track initiation method		Computational cost
$\lambda = 50$	The HT method	4.7×10^7
	The modified HT method	3.6×10^6
	The proposed method	2.1×10^4
$\lambda = 100$	The HT method	3.3×10^8
	The modified HT method	5.2×10^7
	The proposed method	8.6×10^5

5 Conclusions

In this paper, a novel method for Fast track initiation in dense clutters by divide and Hough transform method is proposed, which connects any two points from different cycles and calculates the exact intersection of the two points in parameter space. With the measurement's time sequence information and targets' kinematics information considered, this new algorithm avoids a single scan data accumulation effect, and can improve the reliability of formed tracks. In this new algorithm, measurements in observation space only vote to part lines instead of all in standard Hough transform that pass through them, so it can effectively reduce computation and memory, and improve the speed of track initiation. In addition, the simulation results also validate the superior performance of the new algorithm and indicate that it can effectively eliminate the false tracks, and is more robust to clutter inference.

Acknowledgements. This work is supported by the State Key Program for Basic Research of China (No. 613XXXXX), National Natural Science Foundation of China (No. 91538201).

References

1. Bar-Shalom, Y., Willett, P.K., Tian, X.: Tracking and Data Fusion: A Handbook of Algorithms. Academic, New York (2011)
2. Kim, S.-W., Lim, Y.-T., Song, T.-L.: A study of a new data association and track initiation method with normalized distance squared ordering. *Int. J. Control Autom. Syst.* **9**(5), 815–822 (2011)
3. Obata, Y., Maekawa, R., et al.: Track initiation algorithm for dim target using backward prediction. In: SICE Conference, pp. 1267–1273, Japan (2013)
4. Farina, A., Studer, F.A.: Radar Data Processing: Introduction and Tracking, vol. 1. Research Studies Press Ltd. (1985)
5. Blackman, S.S: Multiple hypotheses for multiple target tracking. *Aerosp. Electron. Syst. Mag.* **19**(1), 5–18 (2004)
6. Musicki, D., Evans, R., Stankovic, S.: Integrated probabilistic data association. *Automatic Control* **39**(6), 1237–1241 (1994)
7. Casasent, D.P., Slaski, J: Optical track initiator for multitarget tracking. *Appl. Opt.* **27**, 4546–4553 (1988)
8. Lo, T., et al.: Multitarget track initiation using a modified hough transform. *Pointing Tracking Syst.* **1**, 12–18 (1994)