

- A 32-year-old woman
- Chronic low back pain
- Limitation of motion of the spine in the frontal and lateral planes

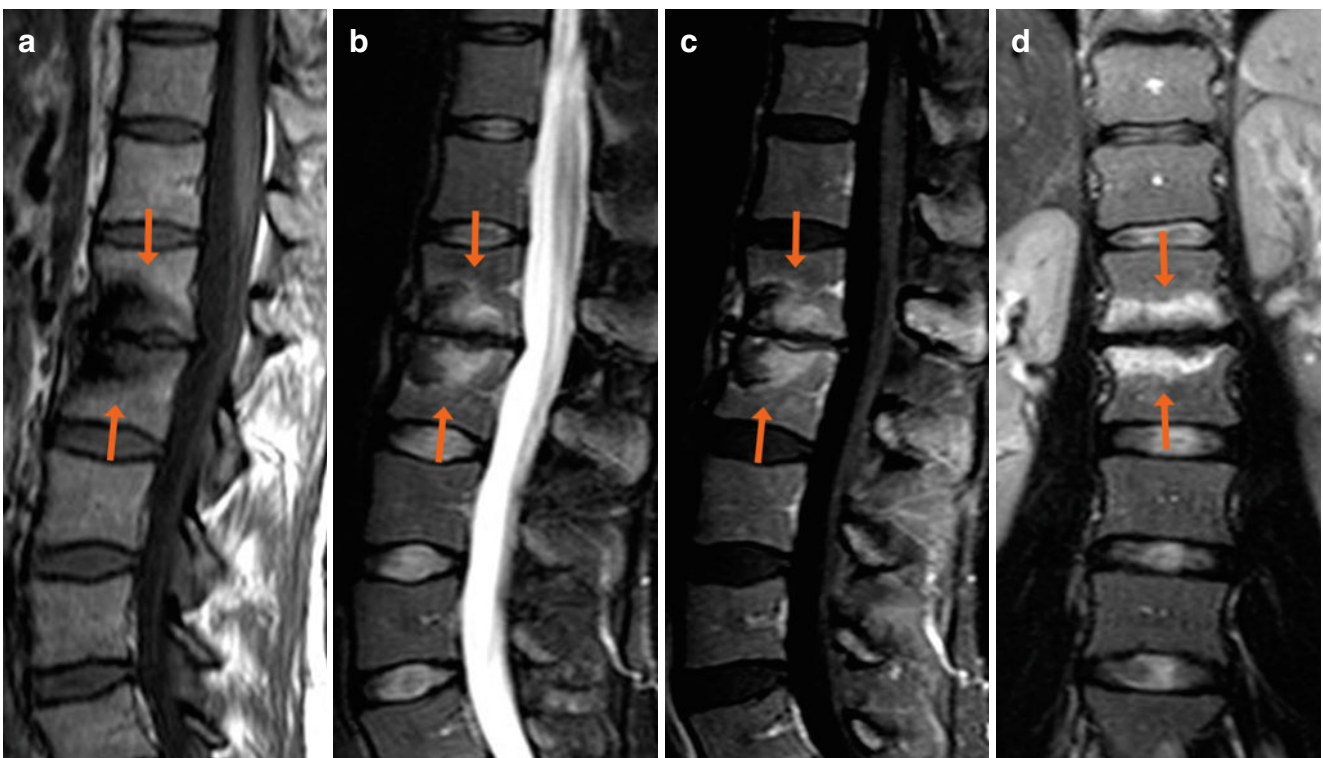


Fig. 1 (a–d) Sagittal SE T1-weighted image (a), sagittal TSE T2-weighted image with fat saturation (b), sagittal and coronal SE T1-weighted images with fat saturation after contrast medium administration (c, d). The opposing L1/L2 vertebral bodies show hypointense signal in T1 (a, arrows) and

hyposignal/hypersignal in T2 (b, arrows), with partial contrast enhancement (c, d, arrows). The corresponding L1/L2 intervertebral disc is collapsed. The spine presents a loss of the physiological curve at the same level. Diagnosis: osteochondrosis in active-inflammatory phase