

Psoriatic Arthritis

Case **37**

Sacroiliitis

Enthesitis

- A 35-year-old patient
- Patient with chronic back pain
- Psoriatic arthritis

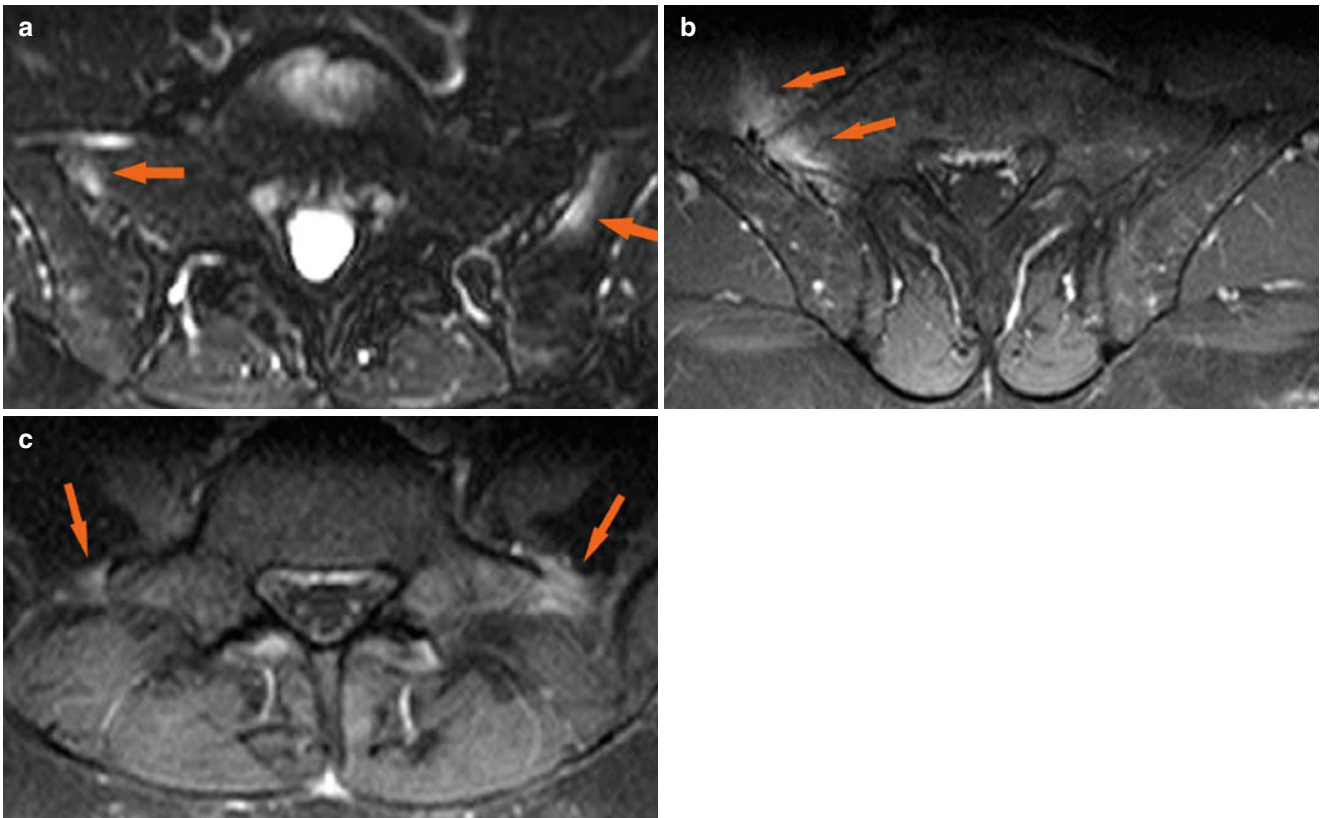


Fig. 1 Axial TSE T2-weighted image with fat saturation (**a**), axial SE T1-weighted images with fat saturation following the administration of contrast medium (**b**, **c**). Different planes. Anterior capsulitis of the right sacroiliac joint (**a**).

Subchondral osteitis on the right sacral side and left iliac side. Multiple foci of contrast enhancement at the sites of attachment of ligaments, indicating enthesitis