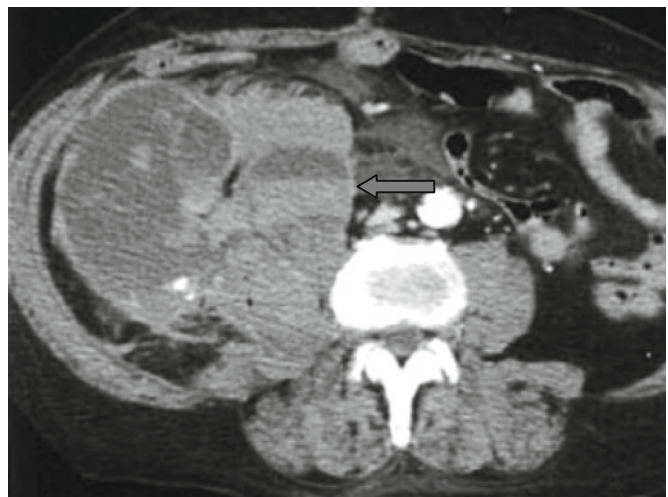
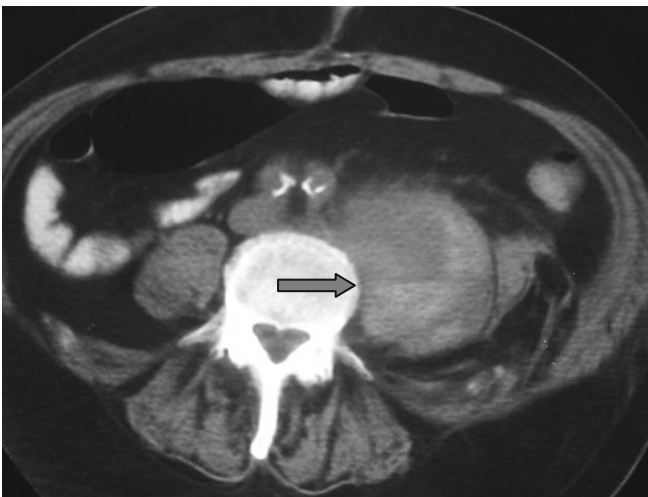
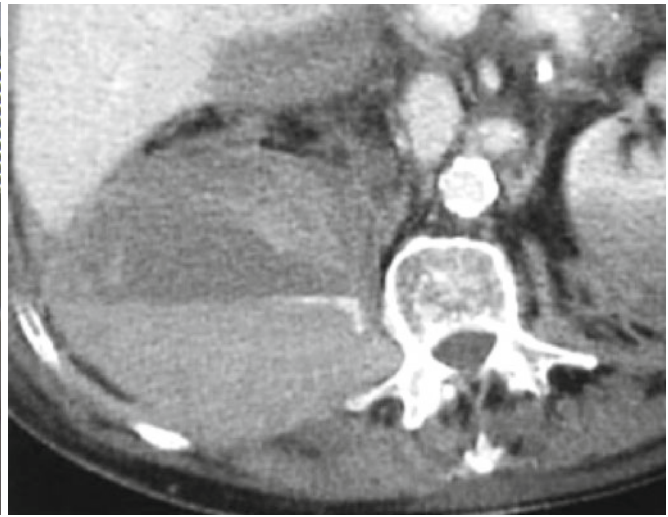


## Hematocrit Sign



Coagulopathic retroperitoneal hemorrhages become apparent as the zones of high density in the retroperitoneal space, muscles, and tissues. A horizontal level between blood with high density and tissues is usually found, forming the “*hematocrit*” sign (↑). Most of the so-called retroperitoneal

bleedings form in the posterior abdominal wall muscles. The most common causes for bleedings include anticoagulant therapy and coagulopathy. After IV enhancement sites of various shapes with the density corresponding to the enhanced blood can be identified in active bleeding.