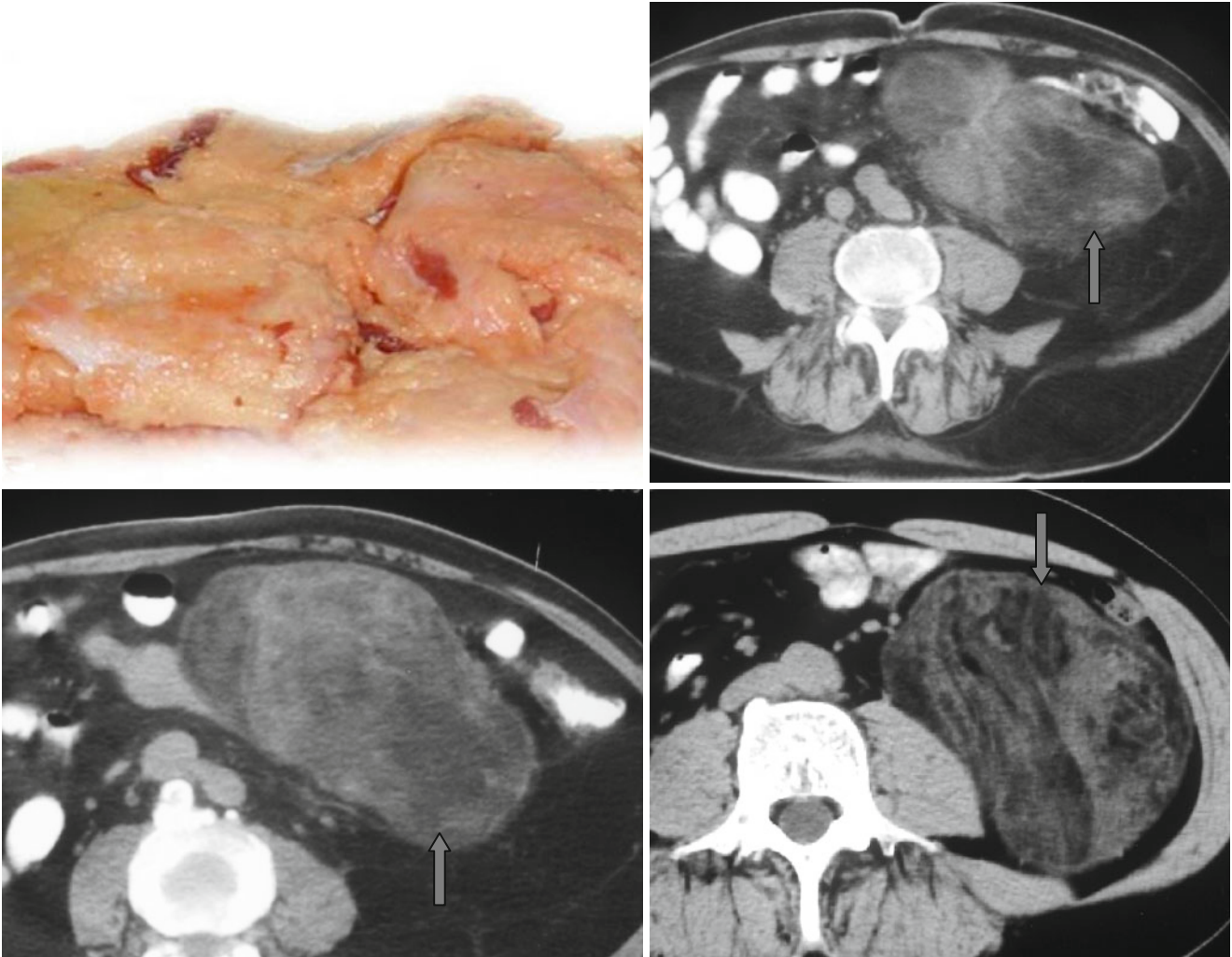


## Dirty Fat Sign



Liposarcomas of the retroperitoneal space are characterized by three variants of images on tomograms, based on the amount of fat in different parts of the tumor.

1. The mixed variant (mixed pattern) – sites of a fatty tissue alternate with soft tissue zones and vessels – the “*dirty fat*” sign (↑). It is the most frequent pattern.

2. The soft tissue variant (solid pattern) – mass with density higher than +20HU, nonuniform (mainly myxoid tissue).  
3. Pseudocystic variant (pseudocystic pattern) – mass of homogeneous density from –20 HU to +20 HU.

In liposarcomas, the “claw or beak” sign is always absent.