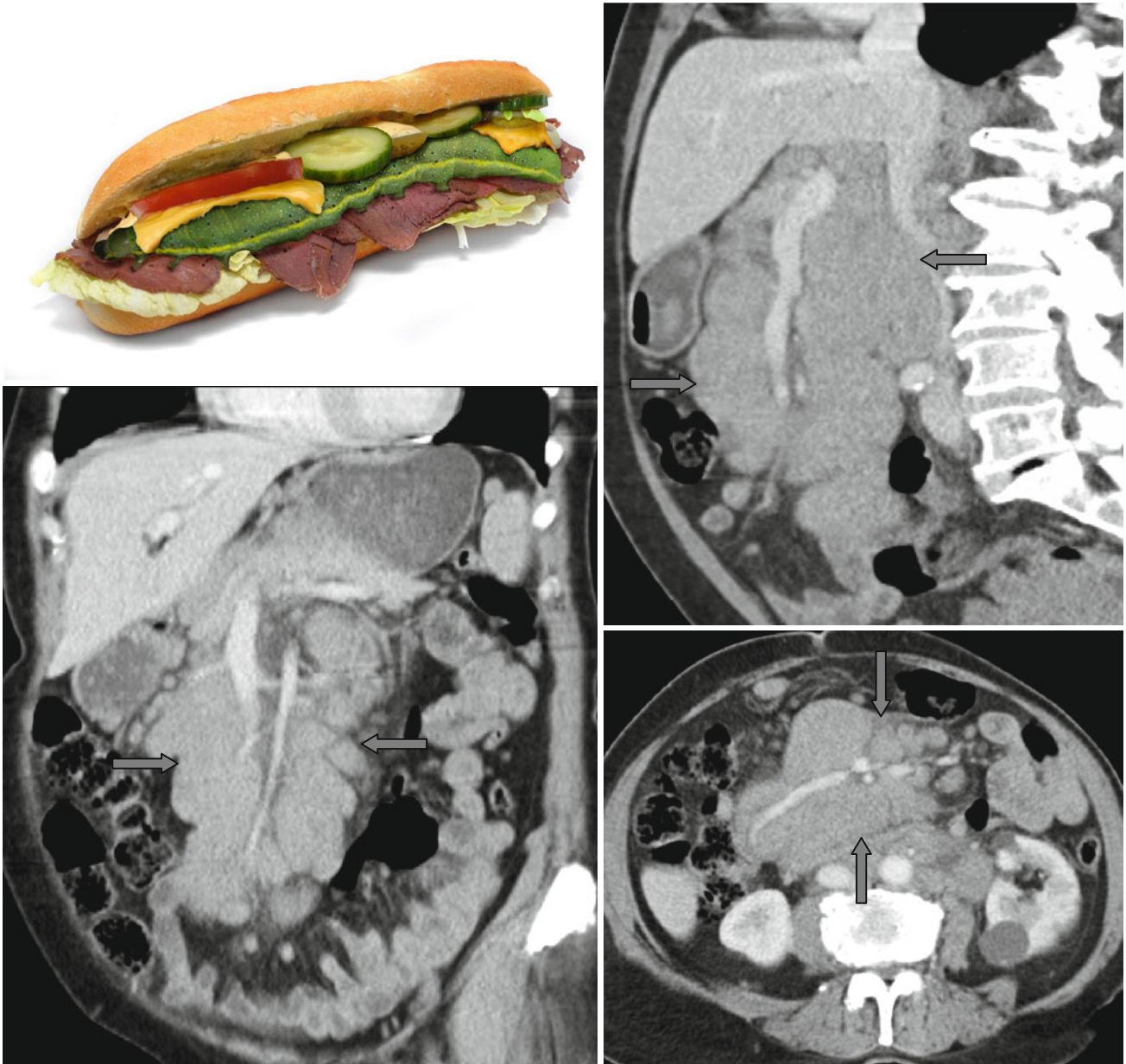


Sandwich Sign



The “sandwich” sign (↑) is formed in lymphomas of the mesentery when the enlarged lymph nodes surround the enhanced mesenteric vessels. Damage to the mesenteric

lymph nodes occurs in non-Hodgkin’s lymphomas (>50 %), whereas in Hodgkin’s lymphoma, it is seen in not more than 5 % of the surveyed.