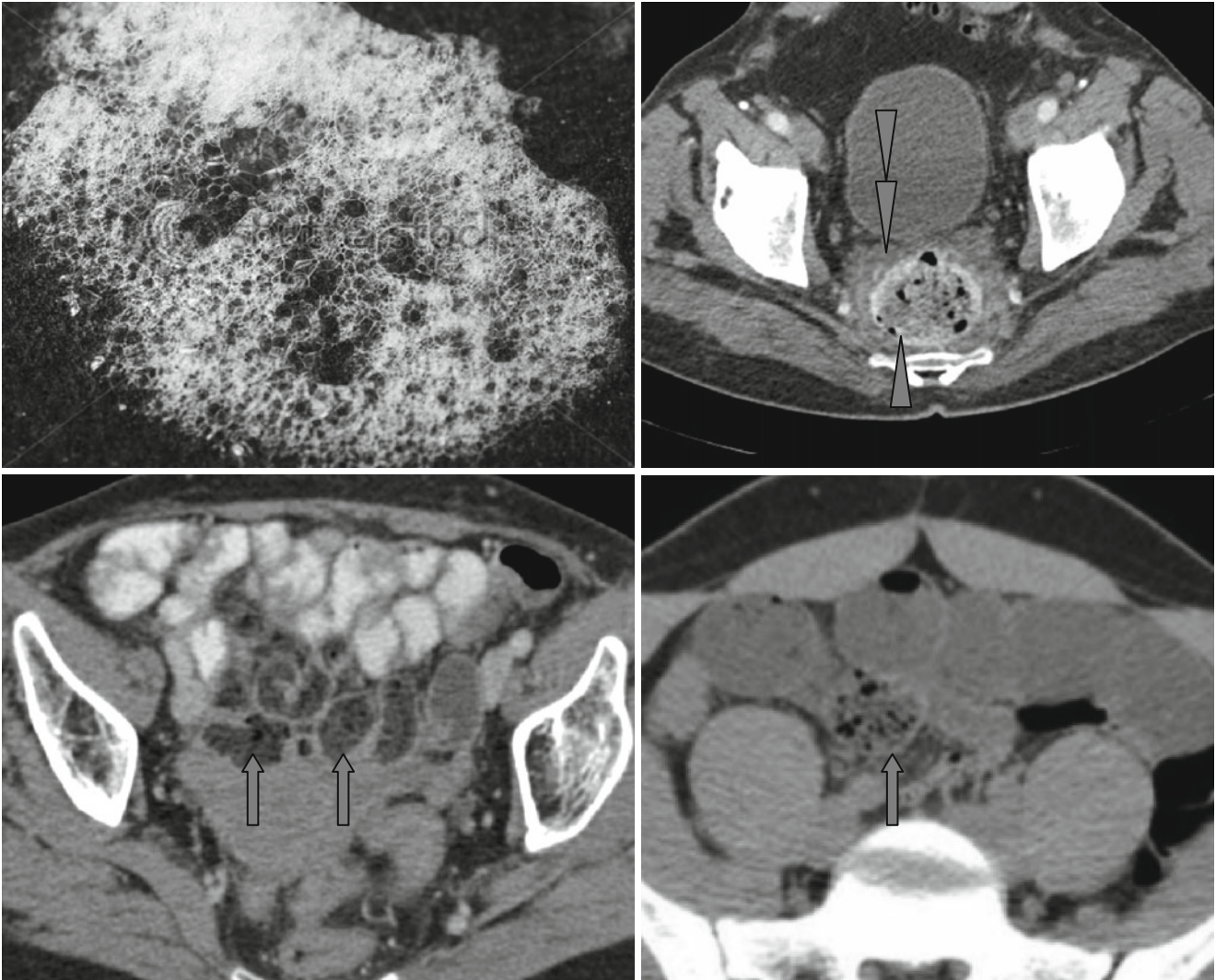


Soap Bubble Appearance and Small Bowel Feces Sign



On tomograms colonic fecal masses look like lather due to a considerable amount of gas bubbles – *soap bubble appearance* (Δ). It is possible to find a colonic wall thickening and increased density of fatty tissue due to inflammation in chronic constipations around such a fecaloma. This set of features suggests the presence of a fecal ulcer (stercoral ulceration) as a necrosis caused by the pressure on the bowel wall ($\blacktriangleright\blacktriangleright$).

The presence of a substrate similar to colonic fecal masses in the small intestine – the “*small bowel feces*” sign (\uparrow) – first of all creates suspicion of subacute or partial small bowel obstruction. Such changes can also be found out in small bowel dysfunction (metabolic or infectious diseases).