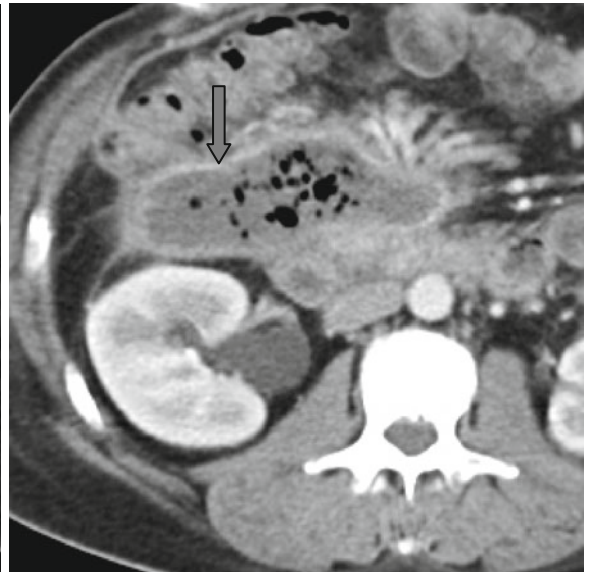
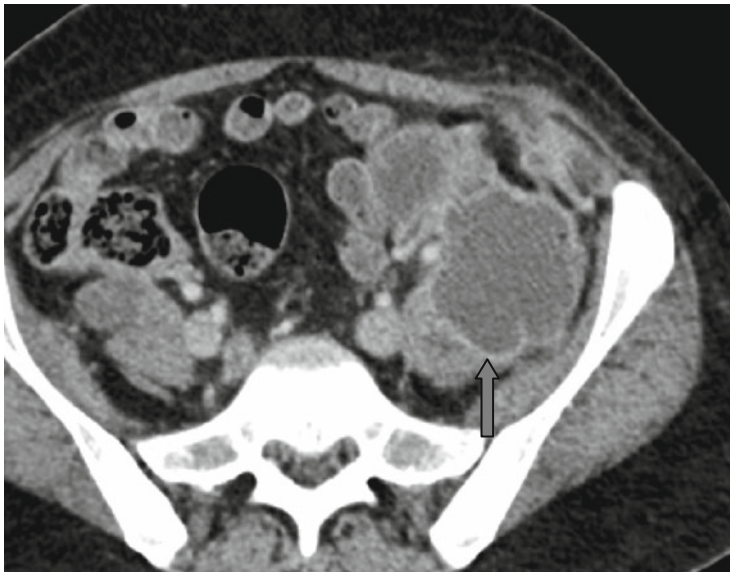
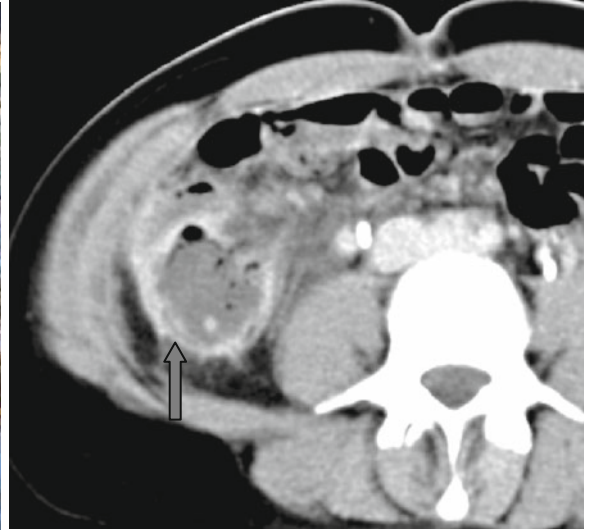


Rim Enhancement or Target Sign



An abdominal abscess represents a collection of pus limited to a fibrocapillary “capsule.” After IV enhancement, the capsule intensively accumulates the contrast agent but internal contents keep low density – the “*rim enhancement*” or

the “*target*” sign (↑). In 50 % of patients, gas bubbles in the abscess can be observed. In 10 % of patients in an appendicular abscess, an appendicolith may be found which is better seen on native images.