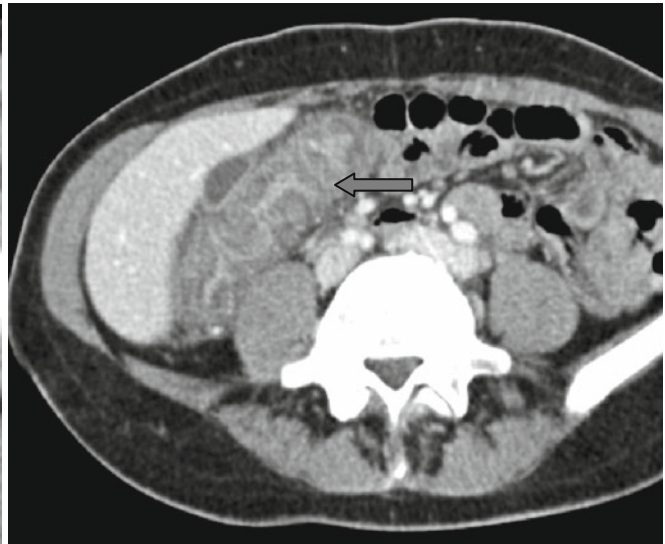
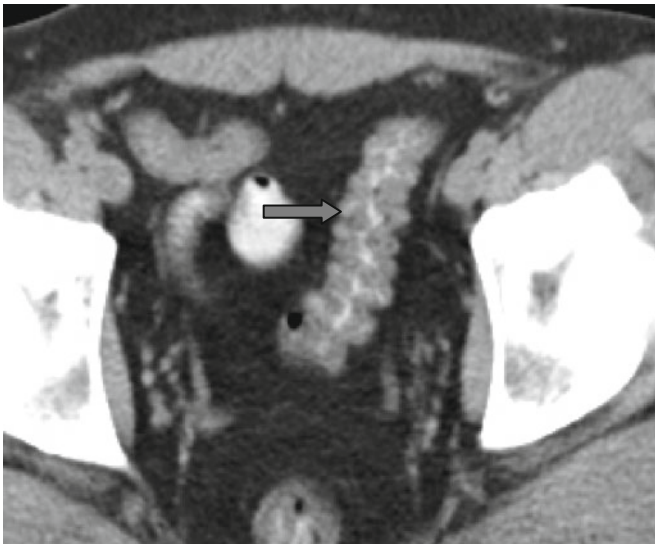
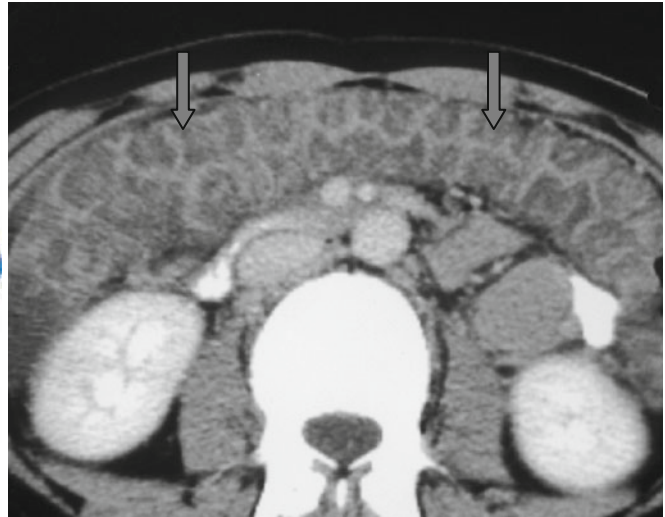


Accordion Sign



The increased enhancement of mucosa and submucosal edema of low density may form the “*accordion*” sign (↑) characteristic of pseudomembranous colitis. This sign also can be seen in other inflammatory processes, massive blood

loss (“shock” bowel), mesentery thrombosis, edema, and hypoalbuminemia. It is necessary to correlate CT features to clinical data.