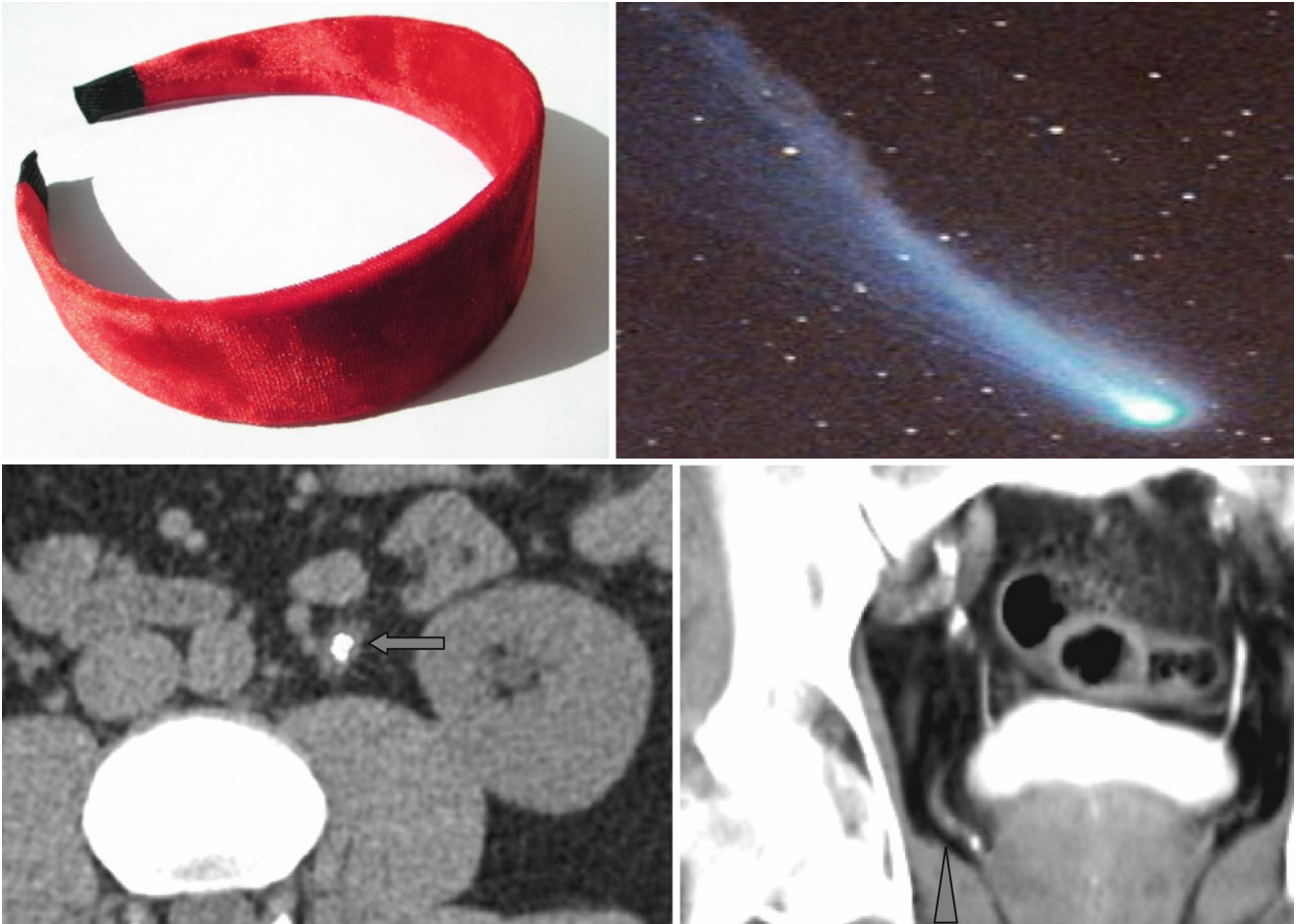


Soft Tissue Rim Sign and Comet Sign



Concrements in the ureter cause edema and probably tissue inflammation that leads to wall thickening and periureteral stranding in ambient adipose tissue with formation of the “soft tissue rim” sign (↑). This sign is never noted around phleboliths.

A curved line of a vein and phlebolith (always without the rim of soft tissue) visible in the tomographic plane can form

the “comet” sign (Δ). Thin collimation of X-rays and multiplanar reconstructions confidently help to determine the relationship of a ureter and a concrement as well as a vein and a phlebolith.