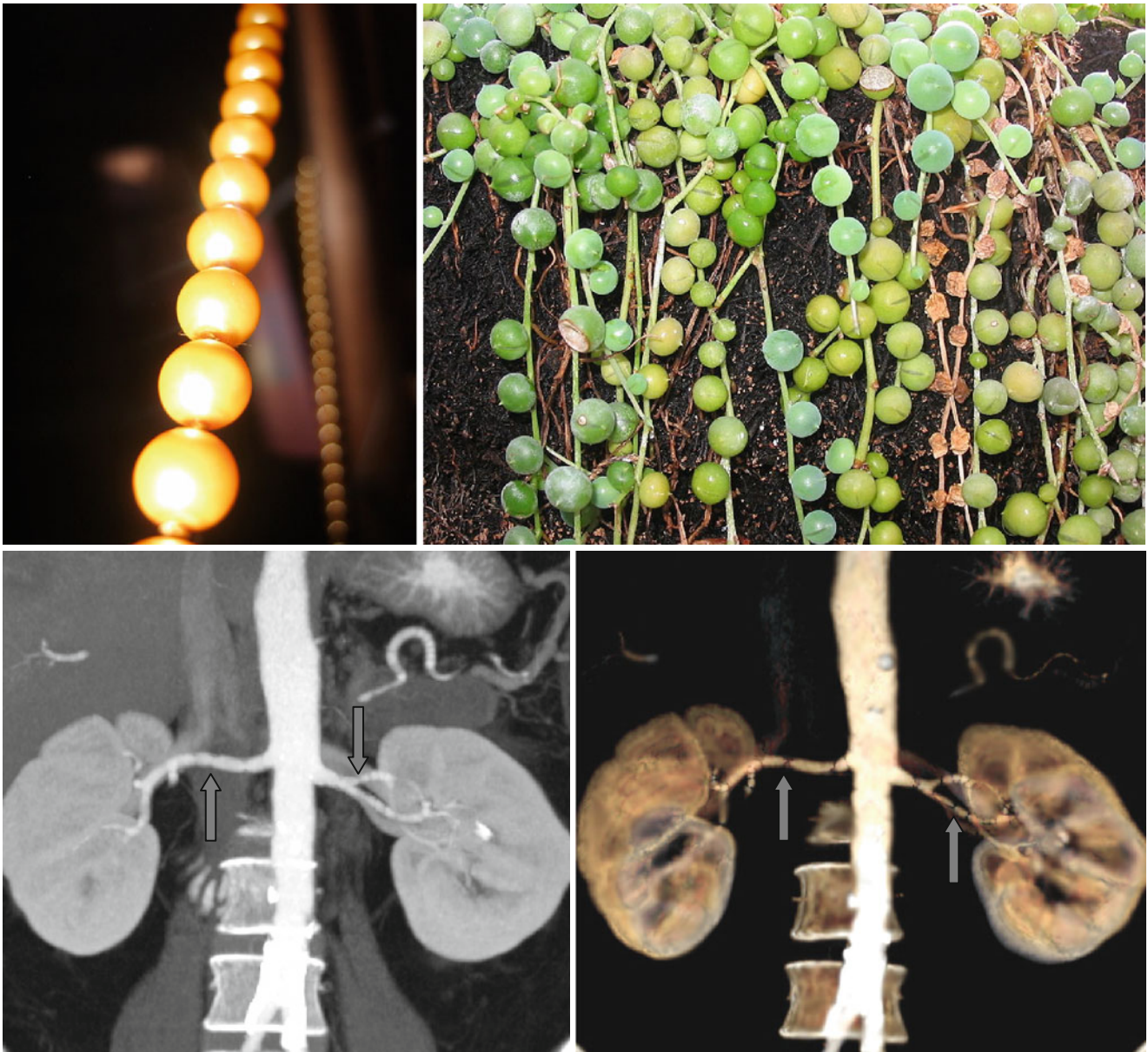


## String of Beads Sign or String of Pearls Sign



Fibromuscular dysplasia is the second in frequency disease causing renal artery stenoses. It is the most common cause of secondary arterial hypertension in young patients. After

CT angiography beaded narrowings mainly of middle and distal segments of renal arteries may be found forming the “string of beads” sign or the “string of pearls” sign (↑).