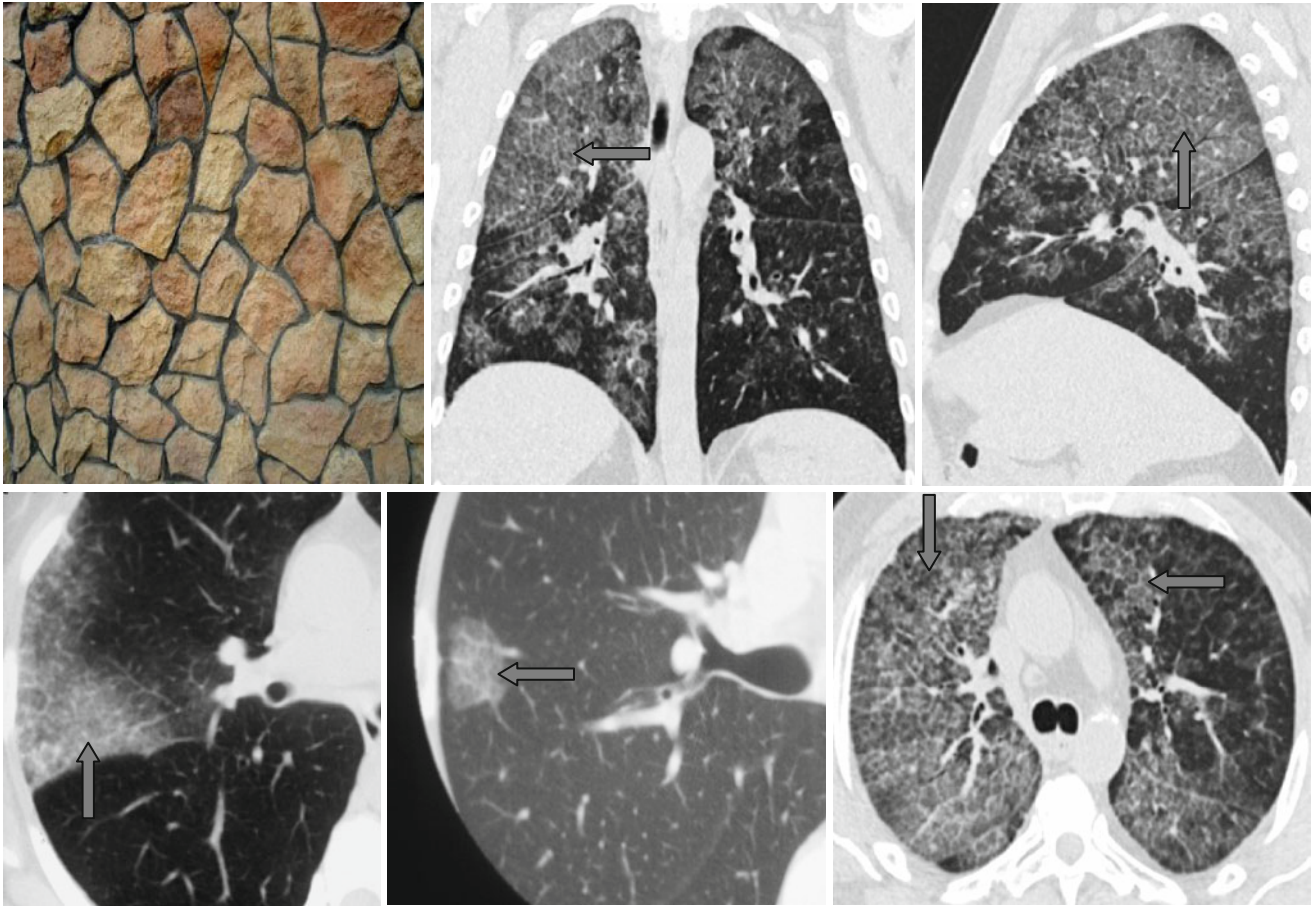


## Crazy-Paving Sign



The combination of ground-glass opacity and fine reticular pattern is known as the “*crazy-paving*” sign (†). It is a nonspecific finding that can be seen in a number of conditions both acute and chronic. Common causes of this sign include acute lung injury, pneumonia, pulmonary edema,

hemorrhage, pulmonary alveolar proteinosis, bronchoalveolar carcinoma, interstitial pneumonia, and sarcoidosis. For proper diagnosis, biopsy or bronchoalveolar lavage may be warranted.