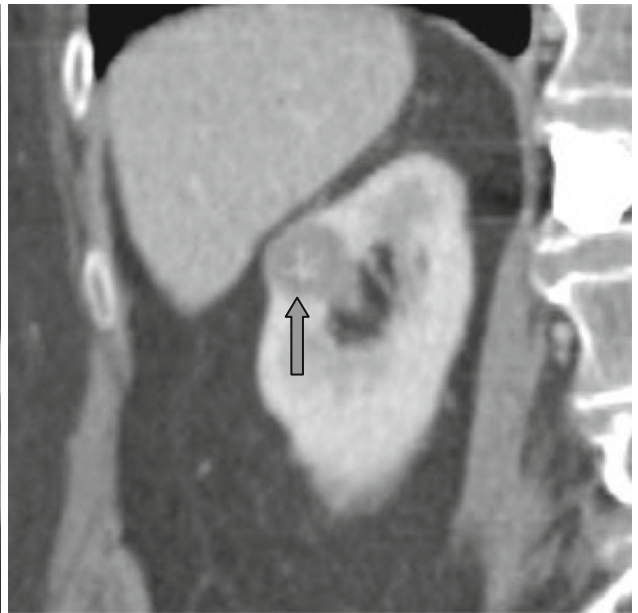
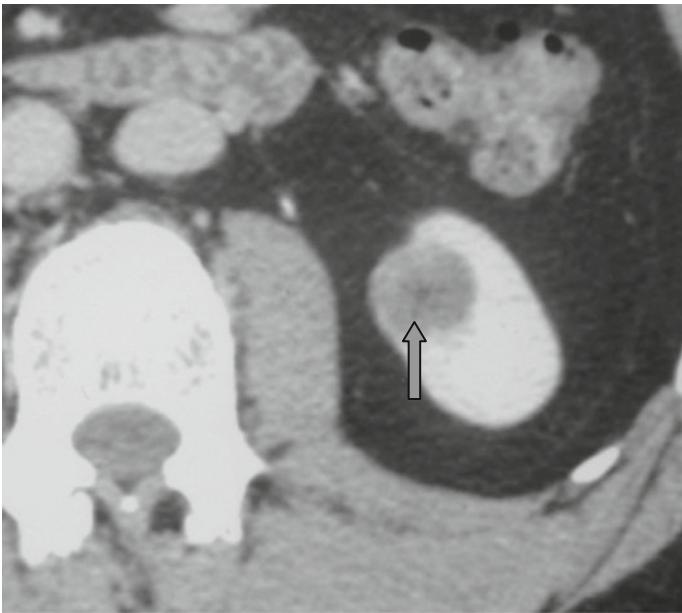


Stellate Scar Sign or Starlike Scar Sign and Spoke-Wheel Pattern



Renal oncocytoma is a benign tumor arising from the collecting ducts, which consists of eosinophilic epithelial cells. On tomograms oncocytomas are homogenous in density and in half of cases demonstrate a central scar with stellate form – the “*stellate scar*” sign or the “*starlike scar*” sign (↑). The scar may opacify intensely in the late phase of IV

enhancement. Sometimes this scar looks like a wheel with spokes – the “*spoke-wheel*” pattern. Unfortunately, in practice it is impossible to distinguish oncocytomas with central scars from renal cell carcinomas with central zones of necrosis.