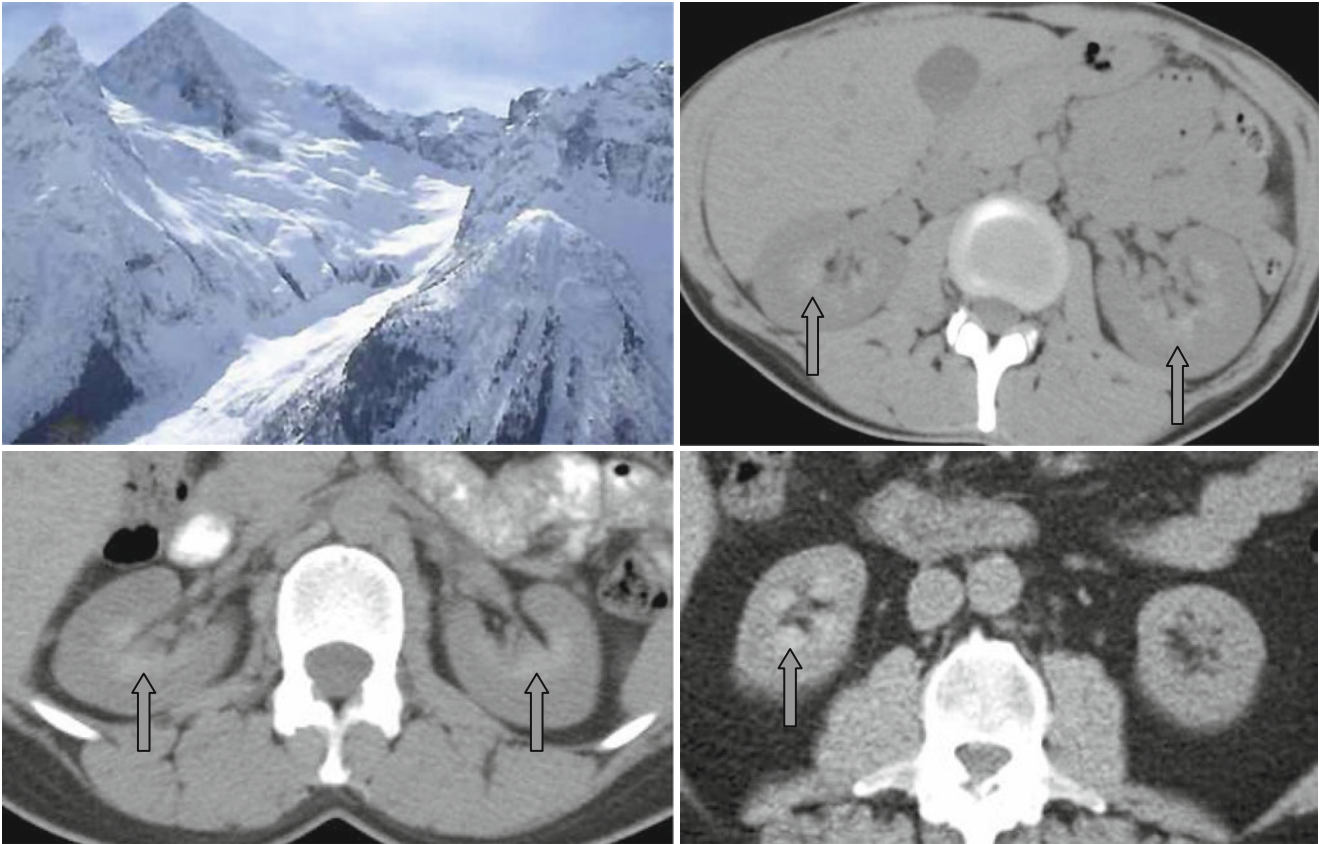


## White Pyramids Sign



Quite often on native images renal pyramids look hyperdense in comparison with other tissues – the “*white pyramids*” sign (↑) – which most likely depicts concentrated urine. The presence of this sign only in one kidney may serve

as an additional indirect indicator of obstructive uropathy in the opposite kidney (possible manifestation of tubular hydronephrosis).