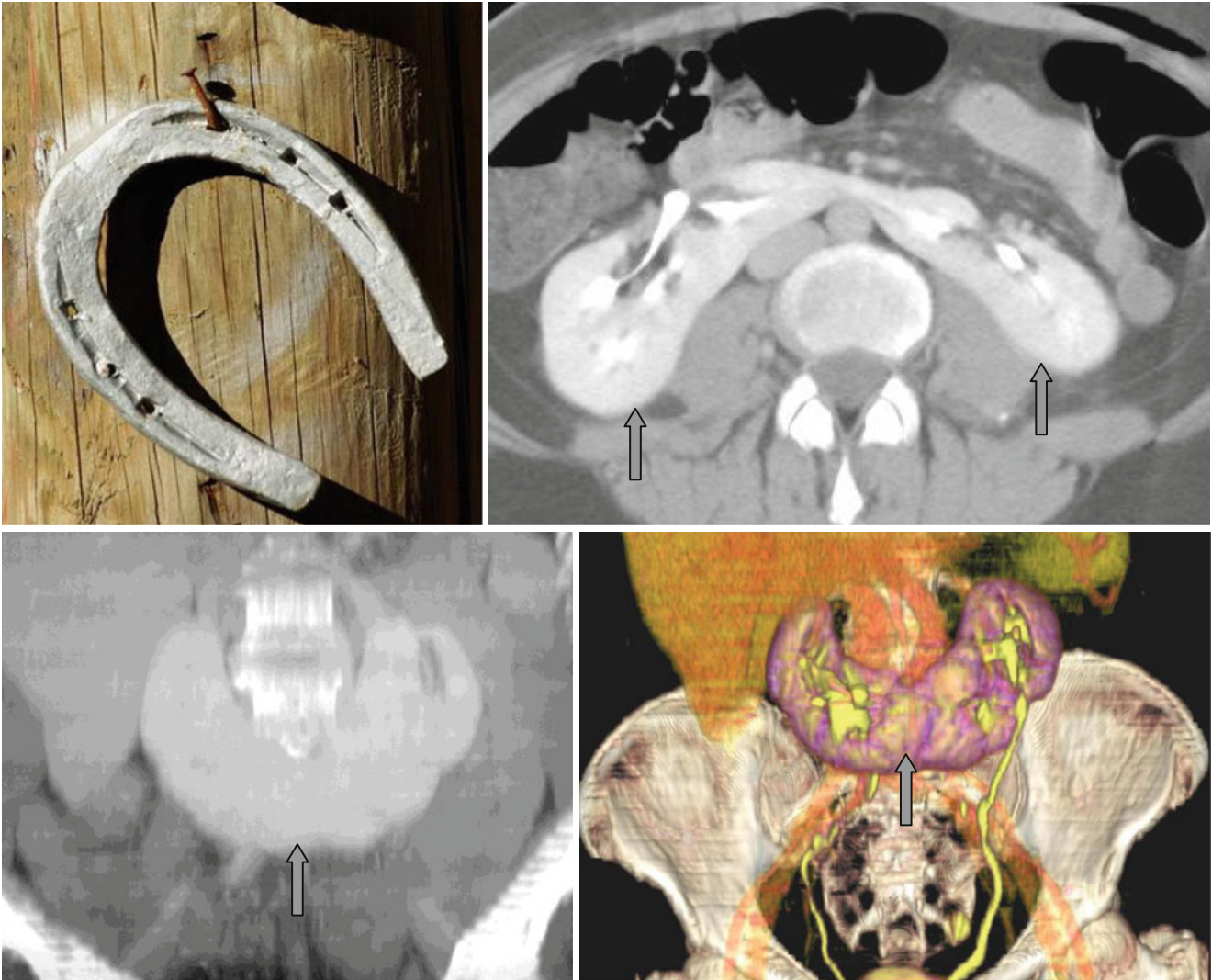


Horseshoe Kidney



The *horseshoe kidney* (↑) is a congenital anomaly, at which kidneys are united by the isthmus in the region of lower poles. There are two variants of coalescence: median or symmetrical (most common) and lateral or asymmetrical.

This condition is associated with high probability of traumatic damage, development of Wilms tumors, renal cell carcinomas, vesicoureteral reflux, and urolithiasis.