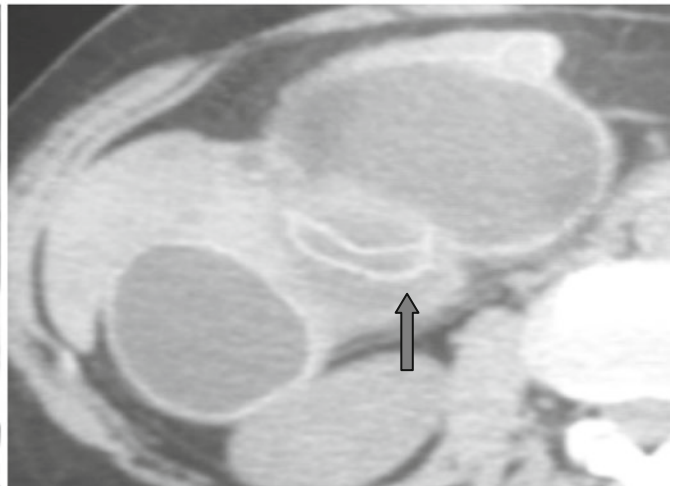
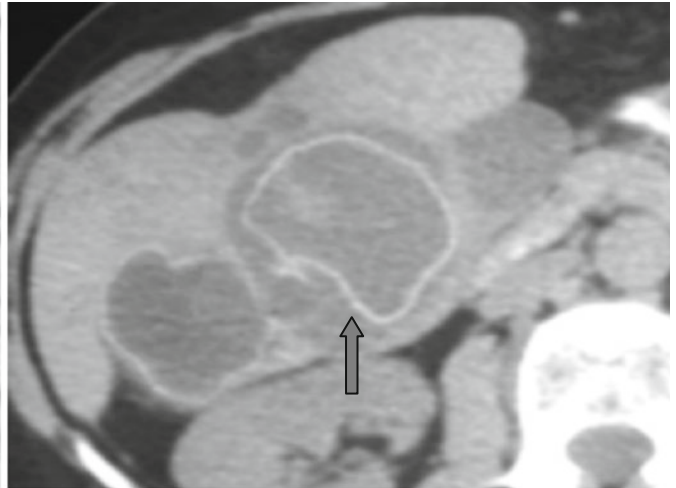
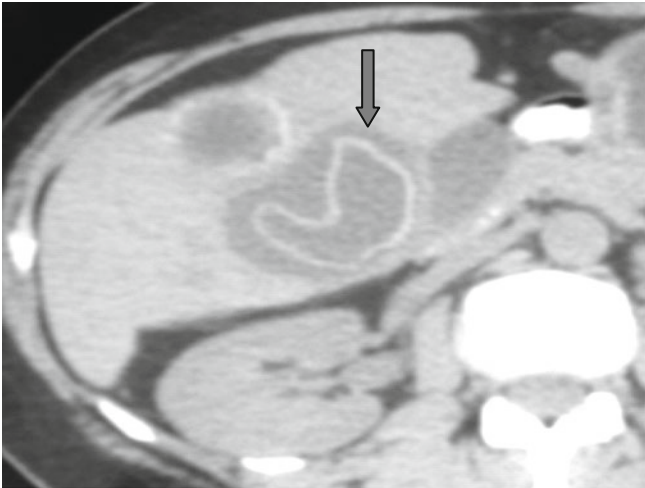


Water Lily Sign or Snake Sign



In the course of a hydatid cyst vital activity, the fibrous capsule calcifies and can also peel off (inner pressure in cysts decreases). Free fragments of the capsule in a cyst

form the “water lily” sign or the “snake” sign (↑) which is specific for echinococcosis. Detection of daughter cysts is also a specific sign for *E. granulosus*.