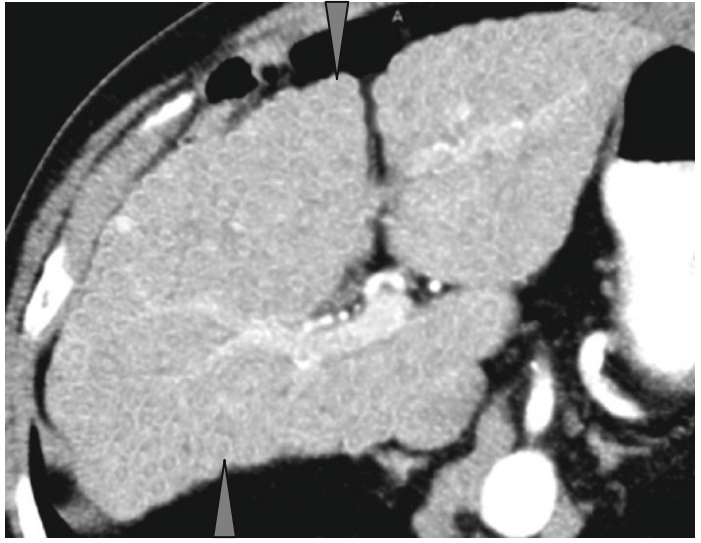
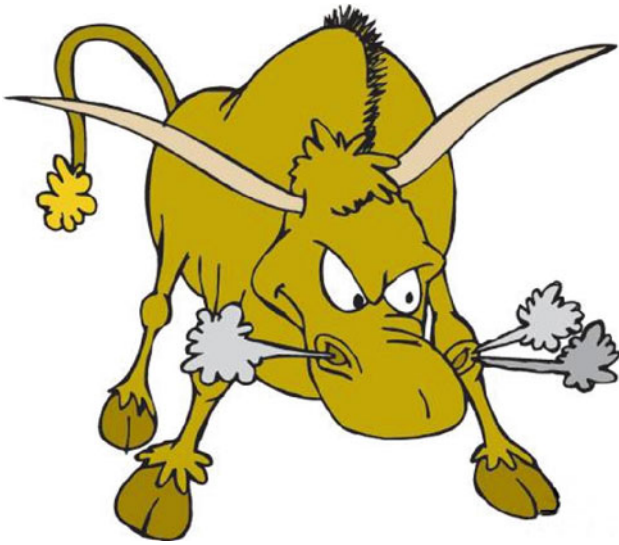


Bull's Eye Sign



In liver cirrhosis regenerative nodes are surrounded by zones of interstitial fibrosis. The veins pass through the centers of the nodes. On native images node tissue has a higher density than the vessels and interstitium due to the deposition of hemosiderin – the “reversed bull’s eye” sign (←). After IV contrast enhancement the veins and fibrous tissue can

accumulate contrast agent more intensively than the tissue of regenerative nodes thus forming the “bull’s eye” sign (△). Much more often the densities of the nodes and the fibrous tissue average in parenchymal phase of contrast enhancement.