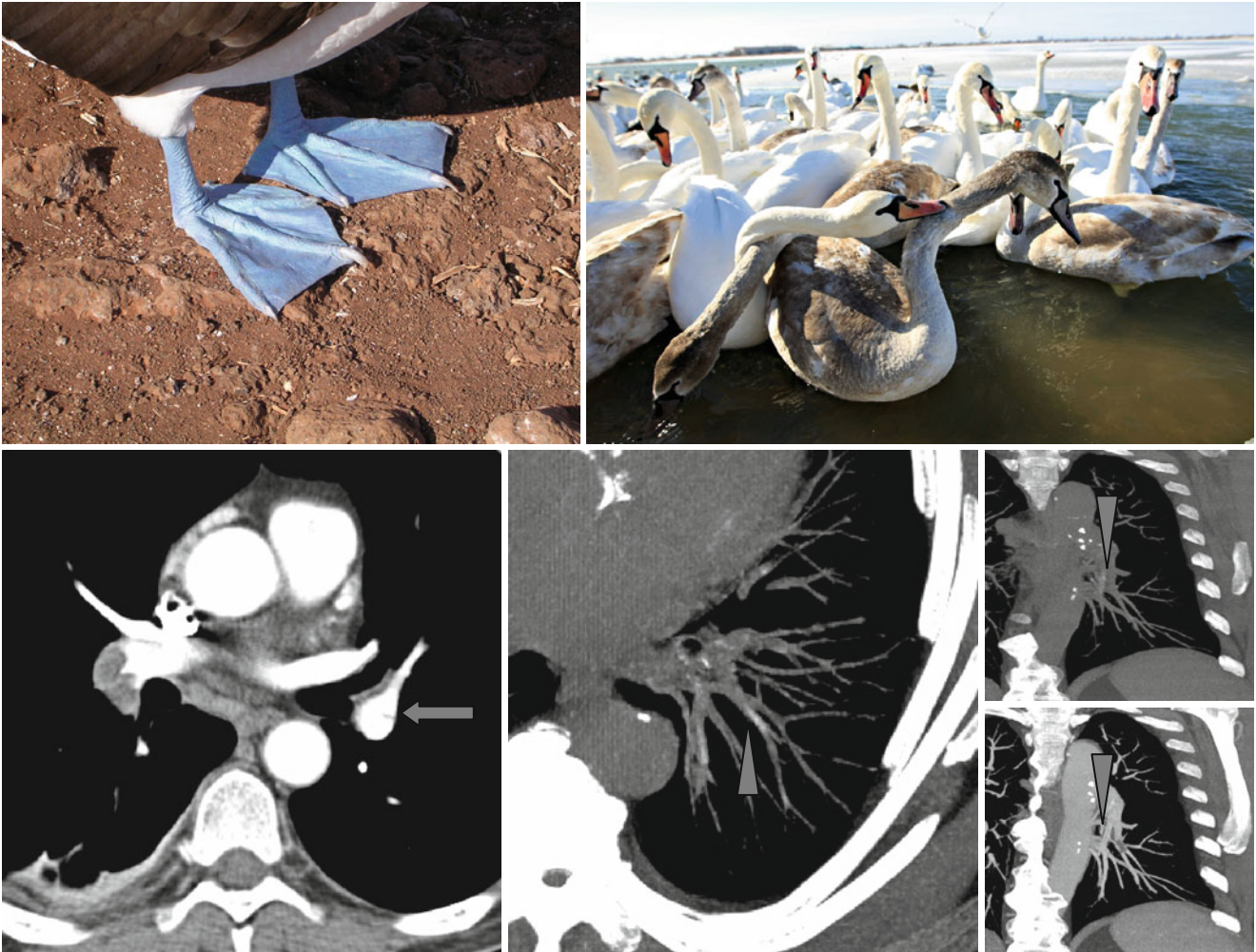


## Web Sign and White (Calcified) Pulmonary Arteries



Linear or membrane-filling defects in the pulmonary arteries after IV enhancement must be considered as an additional sign of chronic thromboembolism – the “web” sign (↑).

Thrombi in the pulmonary arteries eventually may calcify and look denser (whiter) than normal vessels at native

study – “white or calcified pulmonary arteries” (Δ). During CT angiopulmonography white sites of the pulmonary arteries can be missed (right lower image).