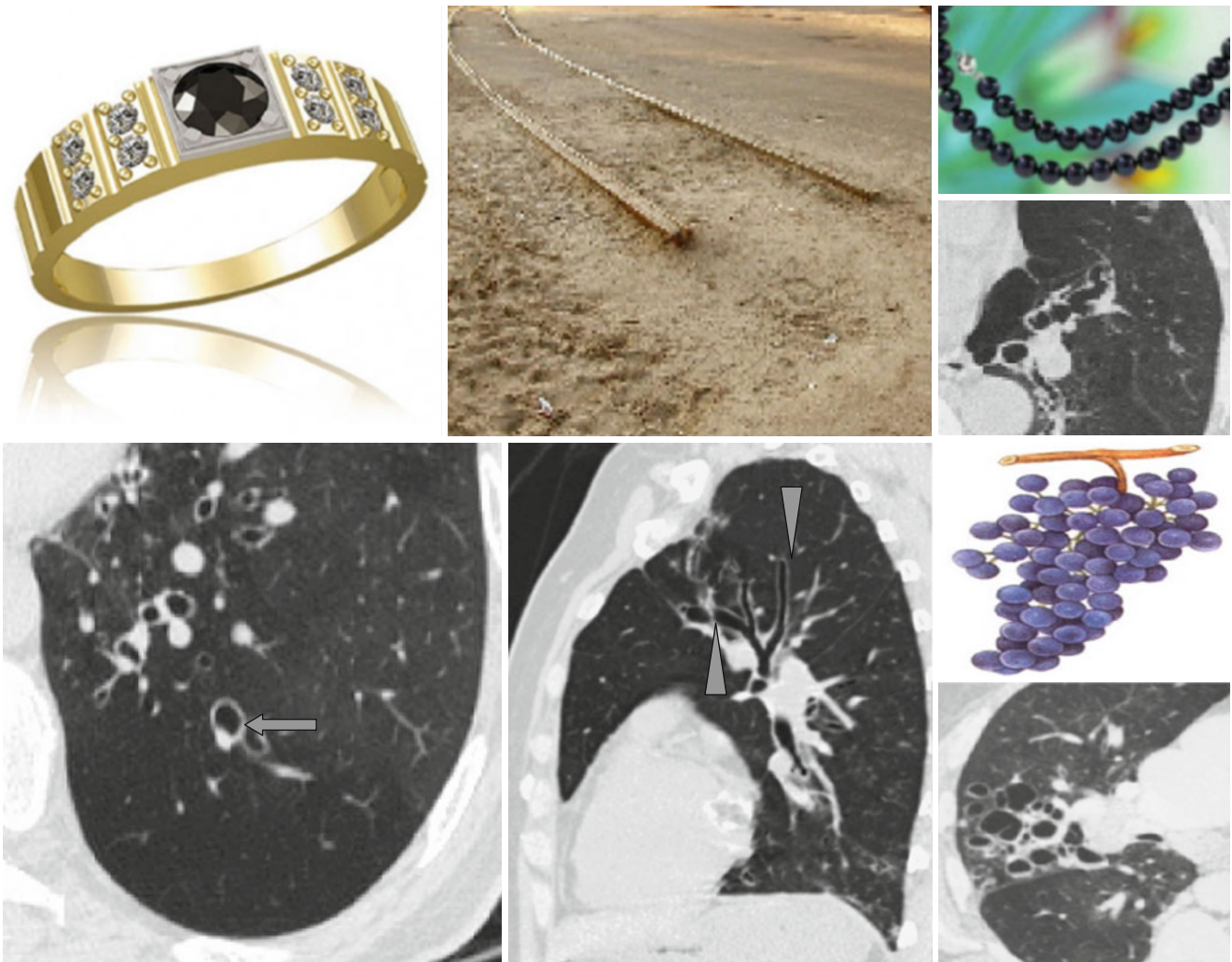


Signet Ring Sign, Tram-Tracking Sign, String of Pearls, and Cluster of Grapes



These are the signs of bronchiectasia. In true bronchiectasia, the diameter of a bronchial lumen which is perpendicular to the tomogram plane exceeds the diameter of the adjacent pulmonary artery branch (\uparrow) more than 1.5 times (the “*signet ring*” sign). Parallel walls of the bronchi in cylinder bronchiectasias when visualized in the plane of tomo-

graphic image form the “*tram-tracking*” sign (Δ) because there is no normal narrowing of a bronchial lumen to the periphery. Varicose bronchiectasias in the tomographic plane look like a chain or the “*string of pearls*” (right upper images). The group of cystic bronchiectasias can create a view of the “*cluster of grapes*” on CT (right lower images).