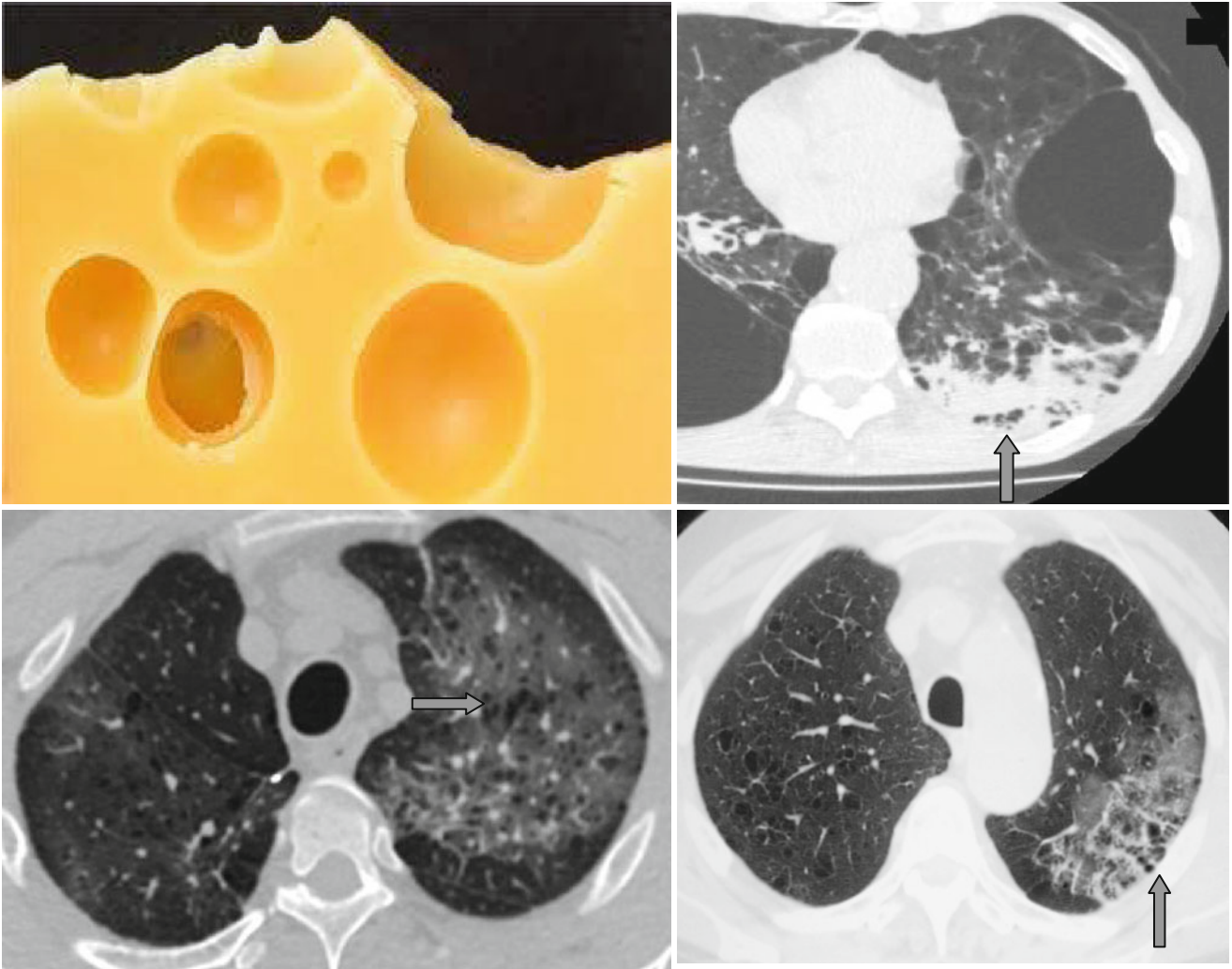


## Swiss Cheese Appearance



Pneumonia is the most frequent acute complication of chronic obstructive pulmonary disease. In patients with emphysema consolidation of the pulmonary tissue caused by pneumonia may look nonuniformly “perforated” so

forming the “*Swiss cheese*” appearance (↑). The presence of emphysema often leads to wrong diagnosis of interstitial lung disease in such cases.