

Psoriatic Arthritis

Case 16

Anterior Spondylitis

Discitis

- A 70-year-old male
- History of chronic low back pain

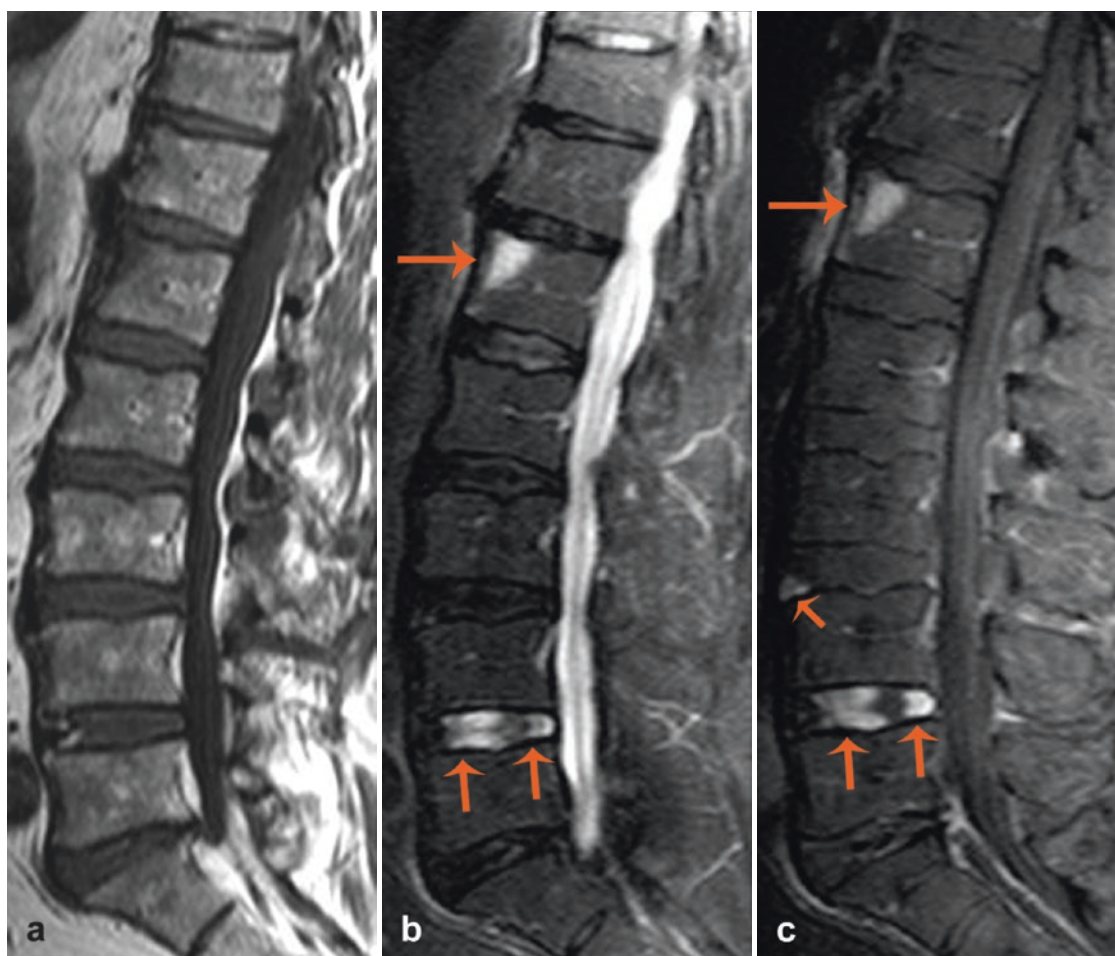


Fig. 1 Sagittal SE T1-weighted image (a), sagittal TSE T2-weighted image with fat saturation (b), sagittal SE T1-weighted image with fat saturation after contrast medium administration (c). Anterior spondylitis at L1, with edematous pattern (hypointensity in T1 and hyperintensity in T2) and

contrast enhancement of the lesion (a–c, *long arrow*). T2-hyperintensity (b) and contrast enhancement (c) of the intervertebral disc at L4/L5, indicating aseptic discitis (early Andersson lesion) (b, c, *double arrow*). Note also a small area of anterior discitis at L3/L4 (c, *small arrow*)