

Undifferentiated Spondylitis

Case 15

Spondylitis in Chronic Phase

Spondylodiscitis

- A 68-year-old male
- History of chronic dorsal and lumbar pain

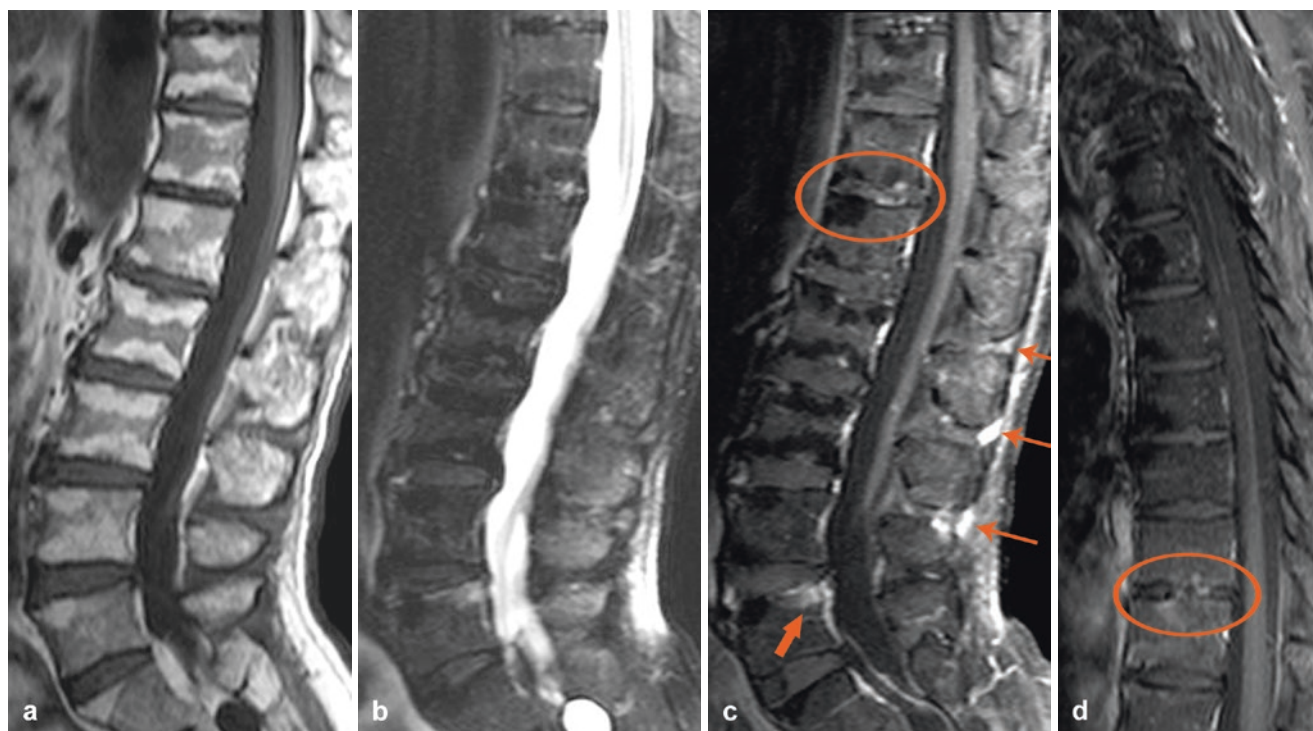


Fig. 1 Sagittal SE T1-weighted image (a), sagittal TSE T2-weighted image with fat saturation (b), sagittal SE T1-weighted images with fat saturation after contrast medium administration (c–d). Multiple areas of hyperintensity in T1 and hypointensity in T2 in the dorsal and lumbar spine, indicating postinflammatory fatty degeneration of the bone mar-

row (a–d). In the same patient, we can find multiple small areas of contrast enhancement in the disc-vertebral unit, indicating spondylodiscitis (c, d, circle). Note also contrast enhancement of the supraspinous and interspinous ligament at L2/L3 and L3/L4, indicating ligamentous inflammation (c, thin arrow)