

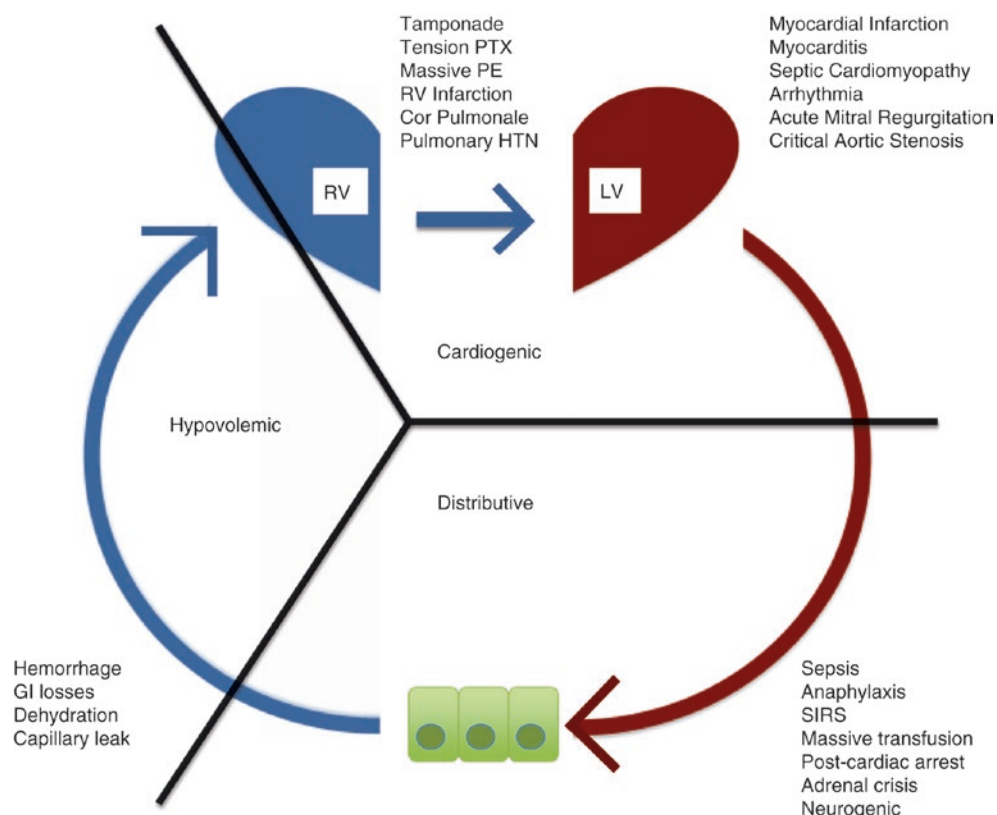
Correction to: Undifferentiated Shock

Russell G. Day and Sage P. Whitmore

Correction to: R. C. Hyzy, J. McSparron (eds.), Evidence-Based Critical Care,
https://doi.org/10.1007/978-3-030-26710-0_3

Figures 3.1, 3.2, 3.3, 3.4 that were incorrectly placed have now been updated with the correct figures.

Fig. 3.1 Shock types and examples. *RV* right ventricle, *PTX* pneumothorax, *PE* pulmonary embolism, *HTN* hypertension, *LV* left ventricle, *SIRS* systemic inflammatory response syndrome, *GI* gastrointestinal



The updated online version of this chapter can be found at
https://doi.org/10.1007/978-3-030-26710-0_3

Fig. 3.2 Physiologic determinants of right heart preload. P_{MS} mean systemic pressure, RAP right atrial pressure, R resistance, RV right ventricle

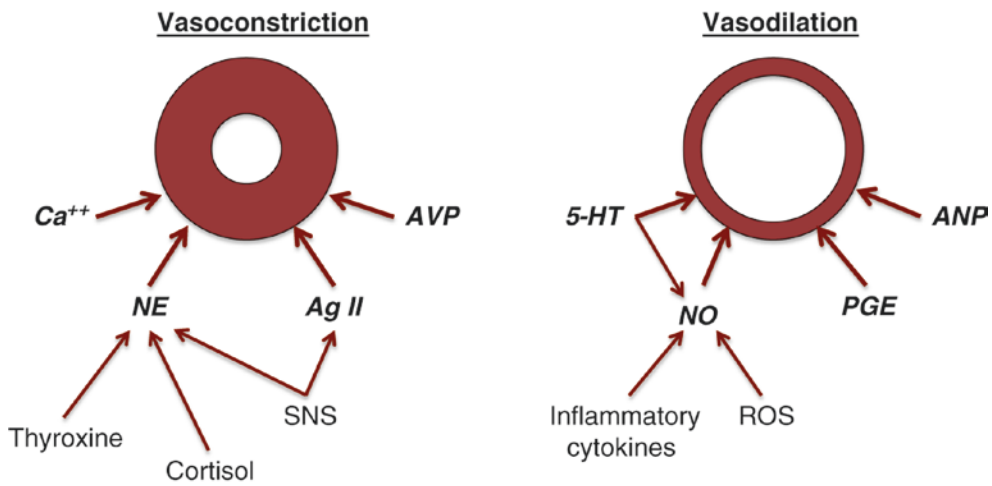
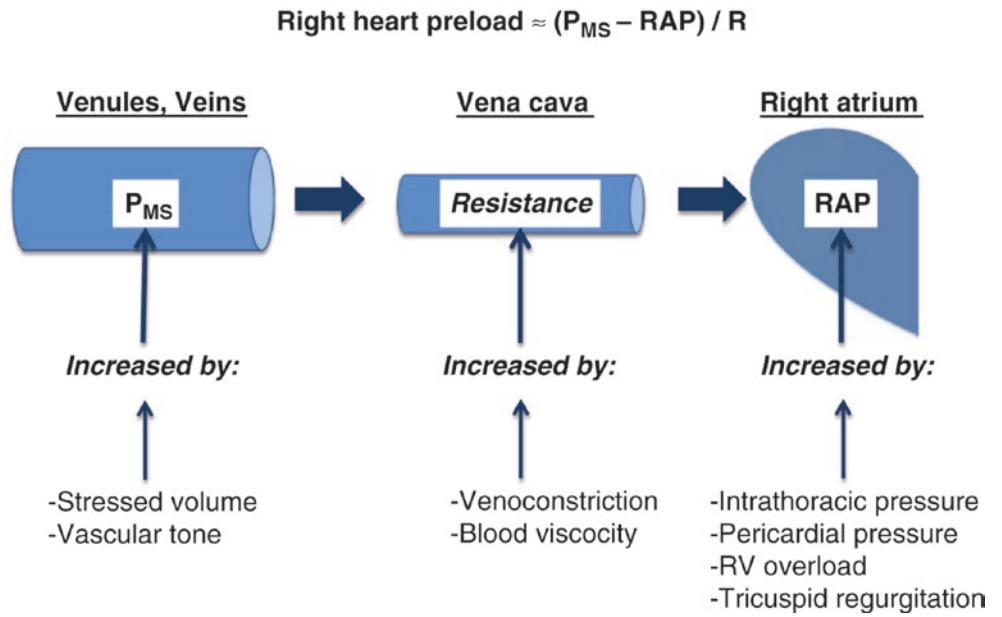


Fig. 3.3 Physiologic determinants of vascular tone. Ca^{2+} calcium, NE norepinephrine, $Ag II$ angiotensin, AVP arginine vasopressin, SNS sympathetic nervous system, $5-HT$ serotonin, NO nitric oxide, PGE prostaglandin, ANP atrial natriuretic peptide, ROS reactive oxygen species

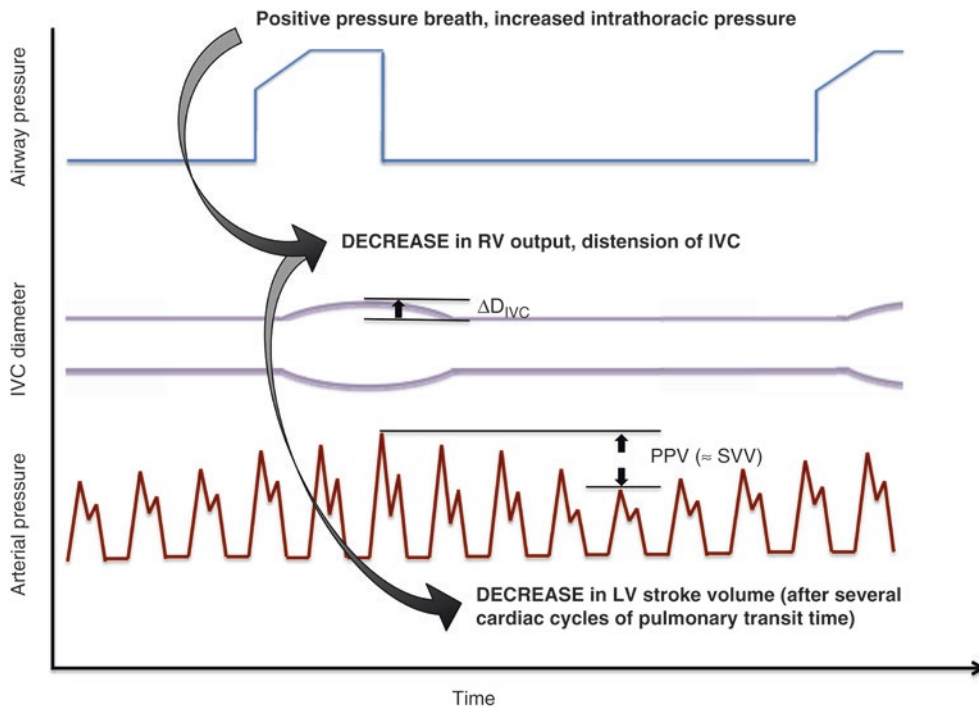


Fig. 3.4 Effects of positive pressure ventilation on IVC diameter and stroke volume variation. *RV* right ventricle, *IVC* inferior vena cava, ΔD_{IVC} change in diameter of IVC, *PPV* pulse pressure variation, *SVV* stroke volume variation, *LV* left ventricle