



Correction to: Genetic Diversity in Narrow-Leafed Lupin Breeding After the Domestication Bottleneck

Wallace A. Cowling

Correction to:
Chapter 1 in: K. B. Singh et al. (eds.), *The Lupin Genome,*
Compendium of Plant Genomes,
https://doi.org/10.1007/978-3-030-21270-4_1

The original version of this book was inadvertently published with the below-mentioned error:
Incorrect Figure 1.1 had been placed in Chapter 1.
The erratum chapter and the book have been updated.

The updated version of this chapter can be found at
https://doi.org/10.1007/978-3-030-21270-4_1

© Springer Nature Switzerland AG 2020
K. B. Singh et al. (eds.), *The Lupin Genome*, Compendium of Plant Genomes,
https://doi.org/10.1007/978-3-030-21270-4_13

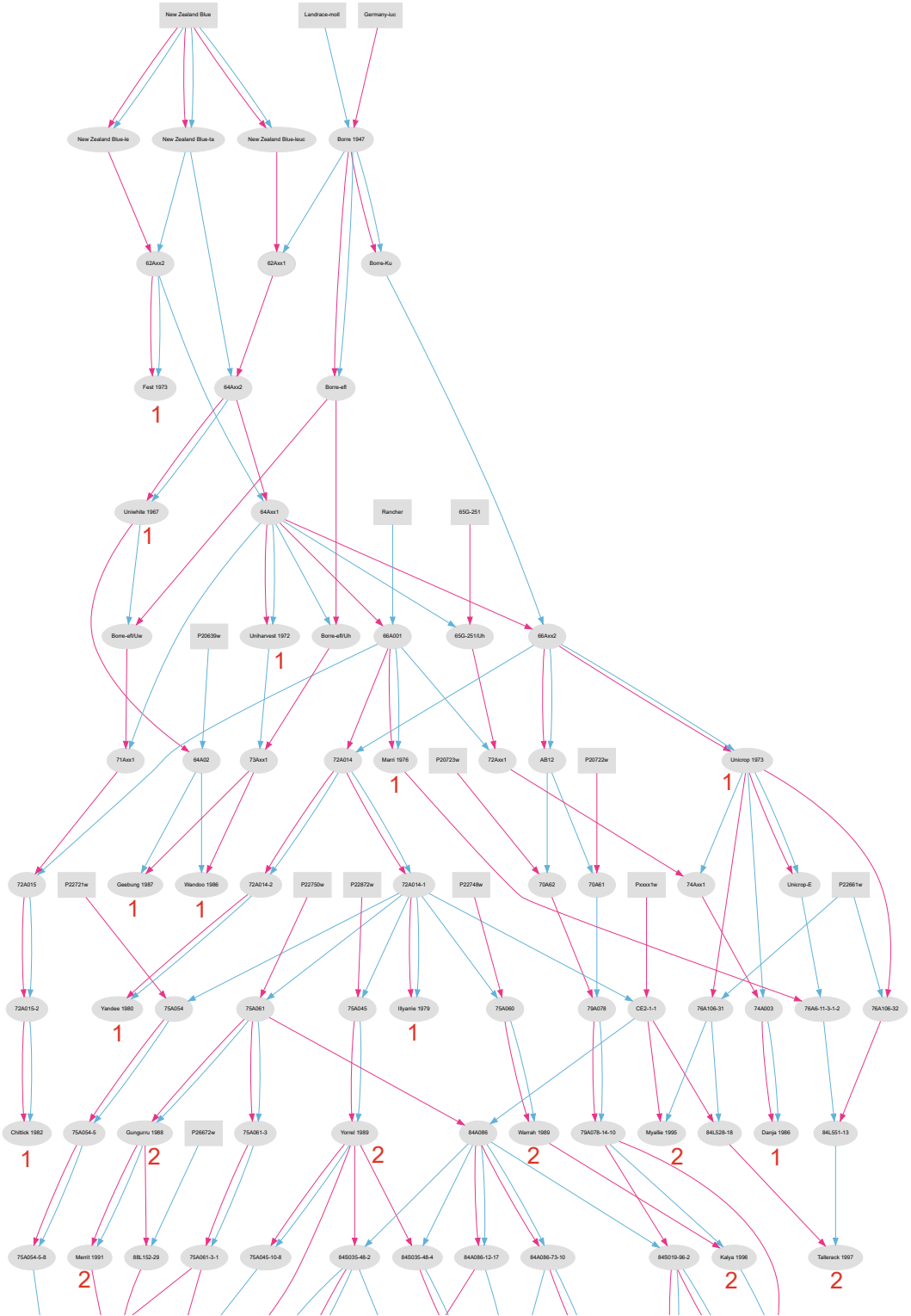


Fig. 1.1 Pedigree diagram of Australian narrow-leaved lupin varieties over four Phases of variety release, indicated by numerals 1, 2, 3, and 4 below the variety name. Female parents are indicated by red lines and male parents as blue lines. Selfing is indicated by both red and blue lines connecting from the parent

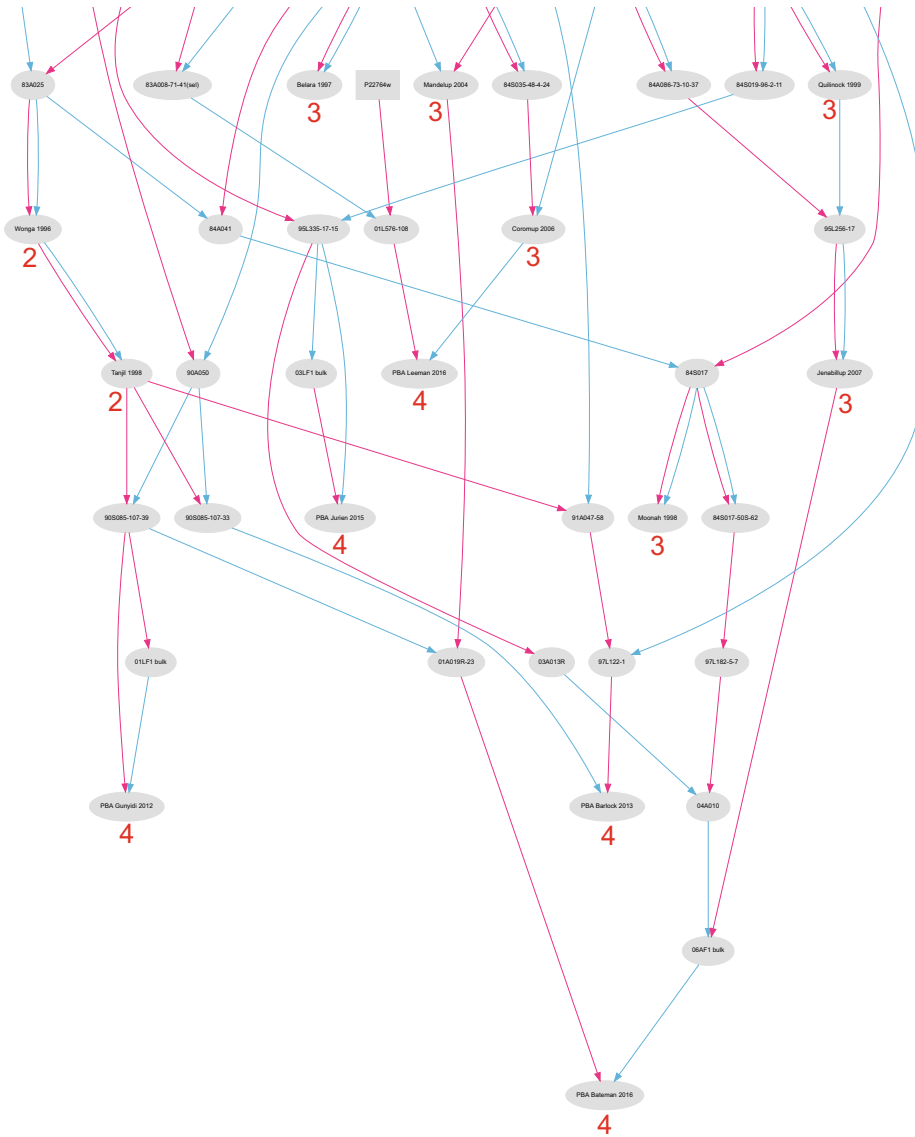


Fig. 1.1 (continued)