

CHAPTER 12

Viral Infections

WASHINGTON C. WINN, JR. and DAVID H. WALKER

Viral infections are among the most common afflictions of man. It has been estimated that children experience two to seven respiratory infections each year; adults are afflicted with one to three such episodes.¹

Many viral infections, such as chickenpox and measles, are contracted through the respiratory tract but usually manifest themselves in other organ systems. Despite the frequency with which viruses infect respiratory epithelium, very few viral pneumonias come to the attention of the anatomic pathologist. The reasons for this paradox are multiple. Most viral respiratory infections, excluding epidemic influenza, produce acute morbidity but little mortality in healthy individuals. The specific etiologic agent may not be known, but the likely identity of the culprit as viral is often suspected from clinical or epidemiologic data. Invasive procedures to procure tissues are unlikely under these conditions, except in those few cases that have unusual or severe clinical presentations.

With rare exceptions the specific identification of a viral infection must come from the clinical virology laboratory. The cytopathic effect of cytomegalovirus in tissue is pathognomonic, and the cytopathic effect of certain other viruses, such as adenovirus and herpes simplex virus, strongly suggests the specific diagnosis. However, definitive identification must come from virologic and/or immunologic investigations. What, then, is the role of the anatomic pathologist? First and most importantly, he or she should be at the center of the diagnostic action once a specimen of tissue has been obtained. If the clinician has suspected a viral etiology, the pathologist must ensure that specimens are preserved for culture and immunologic studies. If the correct diagnosis has not been suspected and if fresh tissue in sufficient volume has been submitted to the

laboratory, the pathologist has a chance to salvage an etiologically specific diagnosis before the tissue is irreversibly immersed in fixative. If, as happens all too often, tissue has been immersed in chemical fixatives, the anatomic pathologist may be able to provide a specific diagnosis by molecular or immunologic means. It should be emphasized, however, that the optimal approach to diagnosis of viral infections includes attempts to recover the infectious agent in culture.

General Features

Viruses Causing Lower Respiratory Tract Infection

The number of viral immunotypes that produce upper respiratory tract infection is large, primarily because more than 100 types of rhinovirus can produce the common cold. A relatively restricted number of viruses account for almost all infections below the level of the larynx. With few exceptions, serious viral infections of the trachea, bronchi, and lung are diseases of infants, children, and immunocompromised adults. To a considerable extent, discrete clinical syndromes in defined age groups can be associated with specific viruses. These syndromes and associated viruses are detailed below and summarized in Table 12-1.

Clinical Syndromes

In neonates and infants less than 2 years old, respiratory syncytial virus (RSV) is the most important cause of viral bronchiolitis and pneumonia¹ (see Chapter 8). Parainfluenzavirus 3 is second only to RSV as a cause of

Table 12-1. Viral causes of respiratory disease syndromes^a

<i>Syndrome</i>	<i>Common agents</i>	<i>Less common agents</i>	
Coryza: "cold"	Rhinovirus	Influenza A and B	
	Coronavirus	Parainfluenza 1 or 2	
	Adenovirus	RSV	
	Parainfluenza 3	Enterovirus	
Pharyngitis	Adenovirus	Influenza A or B	
	EBV	RSV	
	Enterovirus	Parainfluenza 1 or 2	
	Herpes simplex	Rhinovirus	
Group	Parainfluenza 1-3	Coronavirus	
		Influenza A	
Bronchiolitis	RSV Parainfluenza 3	RSV	
		Adenovirus	
		Parainfluenza 1 or 2	
Pneumonia	RSV Parainfluenza 3 Adenovirus	Influenza A or B	
		Rhinovirus	
		Parainfluenza 1 or 2	
	CMV (compromised host)	EBV Varicella-zoster virus HSV (compromised hosts) Adenovirus	Rhinovirus
			EBV
			Varicella-zoster virus

^a Adapted from McIntosh.²⁸

bronchiolitis in this age group. Although much less common, adenoviruses may also produce severe bronchiolitis and fatal pneumonia in very young children.^{2,3} The bronchiolitis may be obstructive, and apnea may occur. Viruses have been established as etiologic agents in some cases of sudden infant death syndrome,⁴ particularly those associated with a lymphocytic bronchiolar infiltrate.

Parainfluenza viruses 1 and 2 are important causes of croup (infectious laryngotracheobronchitis) and pneumonia in older children (aged 2-6 years). These infections occur primarily in epidemics, and most children have been infected by the time they are 5 years old.

Immunity to these pediatric respiratory viruses is incomplete. Infections recur throughout life, usually as mild upper respiratory disease. It is now recognized, however, that severe lower respiratory tract disease is more common in adults than was previously appreciated.^{5,6}

A common manifestation of severe respiratory infection in children and adults is the influenza syndrome—the abrupt onset of fever, headache, malaise, severe myalgias, and prostration in addition to cough, nasal congestion, and sore throat. The etiology of approximately half of these infections is unknown. Influenzaviruses A and B are responsible for one-third of cases; the remainder of the influenza syndromes are produced by a variety of agents, including coronaviruses, which usually cause upper respiratory tract disease.¹ Adenoviruses are particularly likely to infect military recruits.

Infection of the lower respiratory tract may occur as a complication of disseminated infection by viruses that usually cause disease in other organs. The most common examples of this phenomenon are the pneumonias that occur in patients with the cutaneous viral infections measles and varicella.

As many as 10% of influenza virus infections are associated with preexistent lower respiratory tract disease.⁷ Other respiratory viruses, such as adenovirus, may also infrequently produce pneumonia in normal adults.^{8,9} On very rare occasions, upper respiratory pathogens, such as rhinoviruses, may cause infection of the air spaces. The respiratory viruses function as opportunistic pathogens when they produce serious, life-threatening disease in adults. Even influenza virus, a potent pathogen in its own right, produces pneumonia more frequently in patients with chronic cardiopulmonary disease, in elderly persons, and in women who are in the late stages of pregnancy.^{1,7,10}

The predisposing factors can take a variety of forms. The patients at highest risk are those whose cellular immune system has been compromised, usually by immunosuppressive disease or chemotherapy.¹¹ Not unexpectedly, the most common viral infections in these patients are those produced by endogenous viruses that are periodically reactivated, especially cytomegalovirus (CMV) and herpes simplex virus.

Local host defense mechanisms are also important, as demonstrated by the predisposition to severe influenza infection in patients with chronic cardiac and pulmonary disease.¹⁰ Herpes simplex infections often occur when the integrity of the respiratory tract has been breached by an endotracheal tube or a tracheostomy.¹² Viral pneumonia itself, usually from measles, may even serve as the predisposing factor for other viral infections.¹³

Radiologic and Pathologic Features of Viral Pneumonia

Several patterns of inflammatory reaction, which are not mutually exclusive, occur in viral infections of the lower respiratory tract.

The first of these is necrotizing bronchitis or bronchiolitis, which is produced most commonly by the influenza viruses, RSV, adenovirus, and herpes simplex virus. The inflammatory reaction to each of these agents consists primarily of mononuclear inflammatory cells, but neutrophilic leukocytes (PMNs) also participate in the inflammatory response.

On occasion, the response to a pure viral infection includes many PMNs, simulating the response to a bacterial infection.¹⁴ The inflammatory exudate in some viral pneumonias undergoes extensive karyorrhexis and karyolysis, producing fragmented cells and

Table 12–2. Diagnostic modalities for viral respiratory disease

<i>Virus</i>	<i>Culture</i>	<i>Antigen</i>	<i>Molecular</i>	<i>Serology</i>	<i>Comments</i>
Influenza	++	+	–	+	Culture primary; antigen detection not widely practiced
Adenovirus	++	+	+	+	Culture primary
Herpes simplex	++	+	+	–	Serology not useful
Measles	+	–	–	++	Culture difficult; diagnosis clinical
RSV	++	++	–	+	Antigen detection thoroughly evaluated
Parainfluenza	++	+	–	+	Serology hard to interpret
Cytomegalovirus	++	+	+	–	Molecular probes promising; serology hard to interpret

nuclear dust that make determination of the cell types difficult. A similar phenomenon may be observed in some bacterial pneumonias, such as those produced by *Legionella* spp.¹⁵

A second common histologic pattern is interstitial pneumonitis with diffuse alveolar damage. Interstitial edema and lymphocytic infiltration are mixed to varying degrees with destruction and regeneration of the alveolar lining cells, intraalveolar edema and hemorrhage, and hyaline membranes. This pattern of reaction can be seen with virtually any viral infection of the lung. Unless diagnostic inclusions are present, the differential diagnosis is extensive and includes noninfectious damage to the alveolar membrane.¹⁶

Finally, there are focal inflammatory lesions, often centered around bronchioles or small blood vessels. These lesions may be necrotizing with an acute or chronic inflammatory response or they may resemble ischemic necrosis, perhaps because of virally induced damage to vascular endothelium. Varicella-zoster and herpes simplex viruses are the preeminent causes of this pattern, probably following hematogenous dissemination of the virus. A micronodular pattern has also been described for pulmonary infections by cytomegalovirus in immunosuppressed patients.¹⁷

The macroscopic and radiographic appearance of the lung is as varied as the microscopic pathology.¹⁸ Patchy or diffuse infiltrates may be present. The chest radiograph is classically described as suggesting interstitial disease, but a pattern that indicates alveolar filling is often present.

The lungs are usually heavy and airless when visualized at surgery or at autopsy. Interstitial thickening may be evident. Hemorrhage is frequently noted. Nodular or micronodular lesions have been described pathologically. On occasion, infiltrates are segmental or even lobar, resembling bacterial pneumonia.^{7,10,18}

Methods for Specific Diagnosis of Viral Infections

Infections may be diagnosed by isolation of the agent in culture, by demonstration of antigens or nucleic acid in clinical specimens, or by documenting a serological response to the virus (Table 12–2). The interested

reader should consult recent textbooks of diagnostic microbiology for complete details.^{19–22}

Viral Culture

Viral diagnostic facilities, which were once the province of the research laboratory, are increasingly available in clinical laboratories of academic medical centers and even in community hospitals.²³ A specimen should be submitted for culture as soon as possible, because a decrease in the number of infectious particles can be expected after storage and as the course of illness develops. The rapidity with which viruses deteriorate varies, being greatest with cytomegalovirus and respiratory syncytial virus (RSV). Although some centers prefer to inoculate cell cultures at the bedside when RSV is considered,²⁴ acceptable results have been achieved even with this labile virus when delays in processing did not exceed 6 h and when specimens were refrigerated during transportation.^{25,26} It is quite feasible, therefore, to use a regional reference laboratory for viral cultures if facilities for culture of viruses are not available locally.²⁷

In general, maintenance of the specimen at 4°C is preferable to freezing, which results in the loss of many infective particles. Once again, cytomegalovirus and RSV are particularly vulnerable to freezing and thawing. If a long delay between collection of the specimen and processing is inevitable, the specimen should be frozen quickly and maintained at –70°C. The definition of “long” is a matter of some dispute. McIntosh²⁸ has suggested, most reasonably, that specimens should be refrigerated unless more than 4 days will elapse before they are cultured. The worst temperature for storage of most viruses is –20°C; use of a frost-free freezer, which produces repetitive cycles of freezing and thawing, is tantamount to murder.

The major advantage of virologic diagnosis is that the procedure is relatively “broad minded,” if a variety of cell cultures are infected. That is, most of the likely etiologic agents will be recovered and the prejudices of the clinician or pathologist are unlikely to misdirect the diagnostic efforts. The major disadvantage of virologic diagnosis is the length of time required for the recovery of some important pathogens, particularly cytomegalo-

Table 12-3. Viral inclusions

<i>Virus</i>	<i>Intranuclear</i>	<i>Cytoplasmic</i>	<i>Comments</i>
Influenza	–	–	Occasional reports of small cytoplasmic inclusions in exfoliated cells
Parainfluenza	–	+	Inclusions not common
Respiratory syncytial	–	+	Eosinophilic inclusions common in cell culture, less frequent in tissue
Measles	+	+	Nuclear inclusions resemble herpes; cytoplasmic inclusions may be very large
Herpes simplex, varicella-zoster	+	–	Eosinophilic; may have halo; may be multinucleate
Adenovirus	+	–	Early inclusions resemble herpes; late inclusions "smudge" cells
Cytomegalovirus	+	+	Early nuclear inclusions resemble herpes; late inclusions large and basophilic; cytoplasmic inclusions may be present

virus and respiratory syncytial virus. Innovative approaches to viral diagnosis are likely to minimize this difficulty. For example, centrifugation of the inoculum onto a monolayer of cells and subsequent detection of viral growth by immunofluorescence have resulted in recovery of most isolates of herpes simplex virus, cytomegalovirus, and respiratory syncytial virus, within 48 h.²⁹⁻³¹

Direct detection of respiratory syncytial virus in clinical specimens by direct immunofluorescence or enzyme immunoassay is an acceptable substitute for viral culture.³²⁻³⁴ False-positive reactions have been reported to be problems when enzyme immunoassays are used, and confirmatory blocking assays may be necessary.³⁵ Results may be obtained in a clinically relevant timeframe,³⁶ but culture techniques are still important. Other viral agents are frequently isolated from RSV-negative specimens,³⁷ and some authors have noted coinfections in RSV-positive patients with moderate frequency.³⁸

Morphologic Diagnosis

Demonstration of viral inclusions in clinical material is the time-honored method for diagnosing viral infections rapidly (Table 12-3). All viruses produce biochemical alterations in infected cells, and morphologic abnormalities can be detected in many instances. In a few instances, the cytologic abnormalities can be visualized with the light microscope as viral inclusions. In general, the DNA-containing viruses are assembled in the nucleus and produce intranuclear inclusions, whereas the RNA-containing viruses are assembled in the cytoplasm and produce cytoplasmic inclusions.

A presumptive etiologic diagnosis can be made from the typical morphology of the inclusions. Part of the characteristic light microscopic appearance of the inclusions derives from artifacts of fixation. Strano³⁹ recommends fixation of material in Zenker's acetic acid or Bouin's fixative and also in formalin, if viral infection is suspected. The extent to which these fixatives are supe-

rior to formalin has not been documented, however. It is fortunate that formalin appears to be an adequate fixative, because the nature of the process is often not suspected before the tissue is fixed. Special stains for the demonstration of inclusions have been developed, but they offer no advantage over a well-done hematoxylin and eosin stain.³⁹

Intranuclear inclusions must be differentiated from large nucleoli and from invaginations of cytoplasm; the differential diagnosis of cytoplasmic inclusions includes large phagolysosomes or other focal cellular abnormalities and phagocytized matter, such as red blood cells. Among the viruses that produce lower respiratory infections, herpes simplex, varicella-zoster, and adenovirus produce intranuclear inclusions; respiratory syncytial virus and parainfluenza viruses may cause cytoplasmic inclusions; both nuclear and cytoplasmic inclusions may be seen in cells infected by measles and cytomegalovirus. The inclusions may be detected in tissue sections or, in some instances, in cytologic preparations.^{40,41} They are discussed under the individual infections.

Less specific cytologic alterations may also be detected in expectorated sputum or lavaged bronchial contents. Fragmented cells with enlarged, hyperchromatic nuclei and prominent nucleoli represent nonspecific responses to epithelial damage.⁴¹ Virally induced damage to ciliated respiratory epithelial cells has been well documented.⁴² Ciliocytophthoria, originally described by Papanicolaou, is a pattern of cellular degeneration in which free ciliated tufts without nuclei, nuclear degeneration, and acidophilic cytoplasmic inclusions may be found.⁴³ The phenomenon has been associated with viral respiratory tract infection, but may also be observed in other pulmonary diseases.⁴³

The electron microscope has also been used for diagnostic purposes, although less frequently for diseases of the respiratory tract than for those of other organs such as the gastrointestinal tract. Viral particles may be demonstrated directly in clinical material or after amplification in cell culture by negative-staining

electron microscopy.⁴⁴ Virions may also be demonstrated in thin sections.⁴⁵ The diagnosis may be definitive, as in the case of adenovirus. In other instances the morphology of the agents, such as those of the herpesvirus group, is identical, and electron microscopy may be of less differential value than light microscopy.

The advantages of morphologic diagnosis are that the detection of viruses is not limited by narrow specificity of reagents and that cellular or tissue damage can be documented at the time the virus is identified. However, it is often very difficult to associate viruses that produce latent infections, particularly cytomegalovirus, with clinical disease. Demonstration of cytopathology, and especially histopathology, may be a much better indicator that the agent is clinically important than the recovery of the virus in cell culture or the demonstration of viral nucleic acid in cells that appear normal structurally.

The disadvantages of morphologic diagnosis are the limited number of viruses that produce specific morphologic changes in infected cells; even in those that do, the limited number of inclusions compared to the large number of infected cells. For example, the sensitivity of detection of cytomegalic inclusions in lungs from which CMV is isolated may be as low as 38%.⁴⁶ Electron microscopy is infrequently used as a routine diagnostic tool because of the restricted availability of the equipment and the expense of examining ultrathin sections. Sampling errors are magnified when tissue is examined at the ultrastructural level. Fortunately, infectious agents are sturdy. Although the tissue may not be well preserved, the viruses are usually well preserved even after formalin fixation and paraffin embedding. Pinkerton and Carroll⁴⁷ have demonstrated that portions of a paraffin block may be successfully reembedded for electron microscopy after inclusions are identified with the light microscope.

Immunologic and Molecular Diagnosis

Immunologic and molecular diagnostic techniques can be applied to antigens and nucleic acids in solution or in tissue sections (*in situ*). Immunofluorescence and immunoenzymatic techniques have been used in the diagnosis of viral infections for several decades, but have received a boost in recent years from a supply of reagents that has steadily improved in quality. Monoclonal antibodies are now available for most of the viruses that infect the respiratory tract. In some instances the monoclonal antibodies represent a major improvement over their polyclonal forebears.⁴⁸ It is essential that the efficacy of the monoclonal reagent be demonstrated in clinical studies, because the restricted

antigenic site to which the monoclonal antibodies react may not be uniformly present on infecting strains.⁴⁹ The practical application of monoclonal technology to the diagnosis of viral respiratory infections is greatly increased by the efficacy of a monoclonal antibody pool against multiple viral agents.⁵⁰

An immunoassay may be performed on imprint smears from tissue, on centrifuged fluid, or on tissue sections. If the specimen contains large amounts of mucus, which produces nonspecific fluorescence, washing of the exudate has been recommended to facilitate evaluation of the fluorescent smear,⁵¹ but this may not be necessary to detect most infections.⁵² In recent years, experience has been most extensive with RSV infections; the availability of ribavirin as effective antiviral chemotherapy has greatly stimulated the interest in rapid diagnostic tests.^{36,53,54} If effective therapy becomes available for other agents, the impetus for expedited diagnosis will be increased. Although herpes simplex infections have been treated successfully with acyclovir in some instances, there are as yet no reports of therapy of herpes simplex virus infections of the lower respiratory tract.⁵⁵ The efficacy of therapy for cytomegalovirus infections has not yet been unequivocally demonstrated.

In recent years nucleic acid hybridization has been increasingly used for diagnosis of viral infections in the research laboratory.⁵⁶ Probes have been developed for a variety of viruses, including cytomegalovirus, herpes simplex, and adenovirus.⁵⁷⁻⁵⁹ To date, most investigators have concentrated on the detection of nucleic acid in body fluids after fixation to a solid phase such as nitrocellulose.⁶⁰ Sandwich assays, in which the specimen remains in solution, are useful for testing complex biological specimens but may have reduced sensitivity.⁶¹ Jansen and colleagues⁶² approached the problem innovatively, combining molecular and immunologic methods; by absorbing the clinical specimen to a monoclonal antibody-coated surface before hybridization, they eliminated much of the nonspecific activity in highly contaminated specimens such as stool.

In situ hybridization, using tissue sections as the substrate, has been applied less frequently to the diagnosis of respiratory infections. The feasibility of the technique was demonstrated by Myerson and co-workers,⁶³ who detected cytomegalovirus DNA in 13 of 14 lung biopsies from which the virus was cultured; hybridization was not demonstrated in sections that contained varicella-zoster virus, herpes simplex virus, or adenovirus. One drawback of the first-generation hybridization procedures was the need to label the probe with a radiotracer, usually ³²P. Replacement of the radiolabel with an enzymatic colorimetric assay has been accomplished and will make the procedure more

generally applicable if adequate sensitivity can be obtained. Unger and colleagues⁶⁴ have described a simplified colorimetric *in situ* hybridization test for CMV, which can be performed on formalin-fixed, paraffin-embedded sections; an avidin-alkaline phosphatase label can be visualized within 8 h of cutting the histologic section.

If tissue has been refrigerated or snap-frozen, there is greater flexibility in the selection of immunologic and molecular studies. In many instances enzyme immunoassays and *in situ* hybridization can be performed on fixed, embedded tissue. Immunofluorescence for some viral antigens can be accomplished only after the tissue section has been treated with a proteolytic enzyme such as trypsin.^{65,66} Enzymatic digestion of tissue sections has been demonstrated to facilitate *in situ* hybridization also.⁶⁴

These immunologic and molecular techniques facilitate the provision of more rapid etiologic diagnoses. In most instances they require such intensive or prolonged effort that it is difficult to offer them as "stat" procedures unless a therapeutic decision for a critically ill patient hangs in the balance. Even if not performed on an emergency basis, however, these tests offer greatly expedited diagnostic capability for infectious agents that are difficult to isolate, such as varicella-zoster virus, or grow slowly in isolation systems, such as respiratory syncytial virus and cytomegalovirus. There is little doubt that the nucleic acid probes will be useful diagnostically, just as immunodiagnostic procedures have been in selected situations. Adequate sensitivity and specificity must be combined with a procedure that can be performed on a routine basis before they will receive wide acceptance. The selection of the optimal nucleic acid sequence is essential for both adequate sensitivity and specificity. Although monoclonal antibodies are immunologically specific and nucleic acid probes are genetically specific, freedom from false-positive results cannot be assumed when complex clinical specimens are tested.

Approach to the Specimen in the Pathology Laboratory

If the clinician suspects an infectious etiology, many of the diagnostic procedures will have been initiated in parallel with submission of the tissue to the pathology laboratory. If an infectious process has not been suspected clinically, unfixed tissue is not likely to be reserved unless macroscopic lesions suggest an inflammatory process or a frozen section suggests an infectious cause. Increasingly, small biopsies, bronchial brushings, or bronchial washings are submitted to the laboratory, and often there is not enough residual material to refrigerate an aliquot. It is good practice, however, to preserve tissue for special studies routinely when the

patient has been subjected to the risk and trauma of a lung biopsy. Tissue fixed for electron microscopy, frozen for immunofluorescence, or refrigerated for culture is probably not often needed, but is invaluable on those few occasions.

Individual Viral Pathogens

Influenza Virus

Influenza has been and continues to be one of the great scourges of man. Influenza viruses and RSV alone produce epidemic disease annually. Irregularly, but with all-too-great frequency, widespread epidemics of influenza occur, occasionally producing a pandemic that involves virtually the whole world. Epidemics attributed to the influenza viruses have occurred throughout recorded history. In the past century, major epidemics occurred in 1890, 1900, 1918, 1957, and 1968. The great pandemic of influenza in 1918–1919 is estimated to have killed 20–40 million people and accounted for 80% of the deaths in the U.S. Army during World War I.

The influenza viruses are classified as orthomyxoviruses.⁶⁷ They contain RNA, measure 80–120 nm, have a pleomorphic shape with long filamentous forms, and acquire a lipid envelope after maturing ("budding") through the plasma membrane of an infected cell. Three antigenic types are defined by the ribonucleoprotein core of the virus. Type A is the primary pathogen of this group and is responsible for pandemic disease. Influenzavirus B is also an important pathogen and produces epidemic disease. Influenzavirus C is associated serologically with a human infection that appears to be mild and usually goes unrecognized.

Influenzaviruses A and B are additionally classified by the antigenic composition of virally specified surface projections.^{68,69} Both viruses contain hemagglutinin and neuraminidase, which are important for attachment of the virus to cells and subsequent penetration of the cells. The hemagglutinin, in particular, is useful for detection of the virus in cell cultures and as a stimulus for a serologic response in infected patients. Minor changes in antigenic composition of the influenza viruses happen regularly (antigenic drift), and major changes (antigenic shift) occur periodically. Strains are described as follows: antigenic group/geographic source/host of origin if other than man/isolate number/year, followed by the antigenic designation of the hemagglutinin and neuraminidase [e.g., Influenza-virus A/Singapore/1/57 (H2N2) or A/swine/Iowa/31 (Hsw-1N1)].

Influenzavirus was first isolated from swine in 1920 and from man in 1933. Analysis of subsequent isolates

and retrospective evaluation of sera from earlier epidemics has suggested that major shifts in antigenic structure are associated with pandemic disease and that strains may recirculate. Until the 1970s, a single strain or a closely related group of strains circulated at any one time. Since 1977, however, strains with antigenic composition H3N2 and H1N1 have produced human disease concurrently.

Occasional cases of influenza infection may occur at any time of the year, but most are seen in the winter and spring months. In the northern hemisphere, most epidemics occur from January through April; from a global perspective, influenza occurs during every month of the year. There is no evidence for persistent or latent infection by influenza viruses. Although transmission of a virus from an animal to man may occur, it is presumed that the primary means for maintenance of the infection is by person-to-person transmission. As with other respiratory agents, transmission is facilitated by the crowding that occurs during the winter months. Young children are frequently responsible for dissemination of the infection to their families. It is probable that coughing and sneezing are the means of transmission of these viruses, but direct spread by contact cannot be excluded.

Experimental infection may be produced after inoculation of a variety of species, most frequently ferrets or mice. Ferrets, the species in which the initial human isolate was made, are the most susceptible host; in that species infection is usually limited to the upper respiratory tract, but the pathology of viral pneumonia appears similar to human disease.⁷⁰ Viral isolates must often be adapted to mice before damage to the tracheobronchial tree and lung results. Raut and colleagues⁷¹ suggested that the ability of isolates to multiply in alveolar cells may confer virulence. They analyzed sections of lung that had been reacted with antiinfluenza antiserum in an indirect immunofluorescence test and suggested that alveolar macrophages were the site of viral replication. In contrast, Rodgers and Mims⁷² were unable to detect any differences in the replication of virulent and avirulent isolates of influenza virus A in macrophages. They examined macrophages that had been washed from the lungs of normal mice by bronchoalveolar lavage and infected *in vitro* as well as lavaged macrophages from the lungs of mice that had been previously infected *in vivo*. Influenza virus A produced a cytolytic infection in alveolar macrophages, but the infection was not productive of infectious viral particles.

Influenza varies from asymptomatic infection to fatal pneumonia. The classic influenza syndrome includes the abrupt onset of headache, chills, and dry cough, followed by high fever, myalgias, malaise, and anorexia. Physical findings are usually minimal, but the patient

appears toxic.⁶⁸ Fry⁷ described the syndrome as follows:

The onset was dramatically sudden, the patients often being able to recall the time almost to the minute. The initial symptoms were shivering, a sensation of being chilled, headache, backache, pains in the arms and legs. Later, in a few hours, there developed symptoms referable to irritation of the respiratory tract, with nasal obstruction, rawness of the throat and chest and an irritating cough predominating. The patients felt extremely ill, with marked depression and feelings of impending doom.

The symptomatology of influenza virus B infection is indistinguishable from that of influenza virus A.

The symptoms in children are similar, but fever tends to be higher, febrile convulsions may occur, and gastrointestinal symptoms are more common.

Primary influenza pneumonia was first recognized during the pandemic of "Asian" influenza in 1957–1958.^{10,73,74} A spectrum of pathologic lesions was recognized in that epidemic. Hers and colleagues⁷⁴ in the Netherlands described the bacteriology and pathology of 148 virologically confirmed cases of fatal Asian influenza. Pure viral lesions were present in approximately 25% of patients. Tracheobronchitis was present in all cases and was the only lesion in 4% of individuals; viral pneumonia without bacterial superinfection was demonstrated in 20%.

Primary viral pneumonia occurs predominantly in elderly individuals, in those with chronic cardiopulmonary disease, and in infants, but as many as 25% of individuals may have no recognized underlying disease.^{10,75} In the typical case there is a rapid progression from the sudden onset of the influenza syndrome to a severe pneumonia with tachypnea and hypotension. Infiltrates are often found in multiple lobes by chest radiographs. Cyanosis and frothy pulmonary edema are poor prognostic signs.

Viral infection of the respiratory epithelium impairs the function of the mucociliary escalator. Impaired clearance of radiolabeled particles could be demonstrated in patients for as long as 1 month after an acute influenza virus A infection.⁷⁶ The mechanism of the impaired clearance was presumed to be destruction of ciliated epithelial cells. Indeed, investigators have found ultrastructural evidence of ciliary damage during viral upper respiratory infection, even in epithelial cells that were not destroyed.⁴²

In addition, functional impairment of phagocytes has been demonstrated in man and in experimental animals. Abramson and associates⁷⁷ found decreased middle ear pressure, decreased chemotaxis of neutrophils, and decreased chemiluminescence of stimulated leukocytes in chinchillas that had been infected with influenza virus A. Although the phagocytic capability of alveo-

lar macrophages is not altered after infection with influenza virus A in vitro, an immunologically mediated defect in phagocytosis has been observed in vivo.⁷⁸ Larson and Blades⁷⁹ demonstrated that both chemotaxis and the ability to phagocytize staphylococci were impaired in infected human neutrophils.

Oropharyngeal bacteria are the main particulates of concern in a patient with influenza infection. Bacterial infection, most commonly by *Haemophilus influenzae*, was well recognized during the 1919 pandemic, although the underlying viral agent had not been documented at the time. During the 1957 pandemic *Staphylococcus aureus* was the most frequently isolated secondary pathogen in most locations, followed by *Streptococcus pneumoniae*, and, much less frequently, *Haemophilus influenzae* or *Streptococcus pyogenes*.^{10,74}

Bacterial superinfection has also been demonstrated in animal models of influenza virus infection. An increased frequency of pneumococcal otitis media occurred in chinchillas that had been experimentally infected with influenza virus A if tympanostomy tubes were not placed in the ear.⁷⁷

Bacterial superinfection was observed in the remaining three-quarters of the Dutch cases, bacterial tracheobronchitis in addition to a viral lesion in 5%, bacterial tracheobronchitis and pneumonia in the presence of viral tracheobronchitis in 40%, and mixed bacterial and viral pneumonia in 31%. Hers et al.⁷⁴ noted that the mixed pneumonia category might have been underrepresented, because viral lesions could have been obscured by necrotizing bacterial superinfection. Once the pathologic lesions associated with pure viral pneumonia and mixed infection were defined by bacterial and viral cultures, the presence of pathologically pure viral pneumonia during the 1918 pandemic could be recognized.

It may be very difficult to differentiate clinically the pure viral pneumonia from a mixed bacterial and viral infection unless cavitory lesions are demonstrated on chest radiographs or Gram stains of expectorated sputum suggest bacterial infection. When a bacterial superinfection complicates a resolving viral infection, there is a period of clinical improvement followed by the abrupt reappearance of fever, chills, pleuritic chest pain, and a cough productive of bloody or purulent sputum.^{73,75} The mortality appears to be less than when the bacterial and viral infections are concurrent. It may be difficult to isolate the influenza virus in this situation.

Pathologic Anatomy

In many descriptions of influenza pneumonia it is difficult to separate the viral component of the pathology from damage inflicted by secondary bacterial invaders.⁸⁰⁻⁸² Most of our knowledge about the pathol-

ogy of virologically documented influenza pneumonia comes from the Asian and Hong Kong influenza virus A epidemics of the 1950s and 1960s. There is very little information about the pathology of influenza virus B disease, which is associated with morbidity but only rarely with mortality. Hers and Mulder⁸³ described a case of fatal influenza virus B infection in which pneumonia was absent. There was a widespread degenerative change in the tracheal and bronchial epithelium without an inflammatory response, but mitotic activity was observed. These findings are compatible with more extensive data from influenza virus A infections, but difficult to interpret in autopsy material.

Several authors have commented on the similarity of histopathology among cases from epidemics as far back as the great 1918 pandemic.^{74,82} Feldman and colleagues⁸² were able to compare directly the microscopic abnormalities that they observed in 1968 with those that Winternitz et al.⁸⁴ had observed at the same hospital in 1918. It appears therefore that changes in antigenic structure of the virus have not affected the interactions of virion and man in a major way.

Influenza virus tracheobronchitis was studied by Walsh⁸⁵ and colleagues, who performed tracheal and bronchial biopsies on six young adults who had acute uncomplicated influenza virus A disease without secondary bacterial infection. The damage to the mucosal surface was more prominent in the bronchus than in the trachea. Histologic changes ranged from cytologic abnormalities to extensive necrosis and ulceration of the epithelium. Columnar cells were vacuolated, nuclei were hyperchromatic, and cilia were absent. Desquamation of the epithelium extended to a basal cuboidal layer of cells or even to the basement membrane. Most specimens that were taken more than 24 h after onset of symptoms also demonstrated some degree of metaplasia.

The histopathology of bronchiolitis and alveolitis produced by influenza virus A has been documented by open lung biopsy⁸⁶⁻⁸⁸ and at autopsy.^{10,80-82,89} If the cases in which bacterial superinfection occurred are eliminated, a consistent but diverse pattern of damage is evident.

The morphologic damage to the pulmonary parenchyma may be minimal even when the virus has been isolated from the lung. Hers and colleagues mentioned 13 cases between 1941 and 1953 in which the patient died in the acute stage of the infection and influenza virus type A was isolated from the lung, but specific histologic changes were not present. They hypothesized that most of the virus had been aspirated into the distal air spaces ante mortem. Engblom and colleagues,⁹⁰ however, described a patient with an influenza syndrome followed by influenza virus A myocarditis (proved by isolation of the virus from the myocardium)

who had clear lung fields by chest radiograph and congestion of the organs at autopsy. We have observed a similar case in which the lungs showed only congestion despite isolation of influenza virus A in pure culture from the lung. Extensive myocarditis was unsuspected clinically. It appears, therefore, that replication of the virus and serious systemic disease can occur in the absence of extensive pulmonary histopathology.

Hers and colleagues⁷⁴ described seven features of pure influenza virus A pneumonia: (1) cytopathology of the respiratory epithelium down to the alveolar ducts; (2) cytologic damage to the alveolar lining cells; (3) capillary thrombosis and focal necrosis with leukocytic exudate; (4) capillary aneurysms and hemorrhage; (5) after 3–4 days, the appearance of a plasmatic exudate that lines the alveolar ducts and includes hyaline membranes; (6) regeneration of the epithelium of the respiratory bronchioles and alveolar ducts into a pseudostratified metaplastic epithelium after 5–7 days; and (7) regeneration of the alveolar epithelium into a continuous monolayer covering the alveolar wall. The lesions were always focal and sometimes clearly lobular in distribution.

Most recent descriptions of the pathology of influenza pneumonia have concentrated on the bronchiolitis, the interstitial pneumonia, and the reparative process. There are no viral inclusions to help distinguish this viral disease from others. In patients who died early in the course of the disease, necrosis of the ciliated and goblet cells of the epithelium was prominent.⁸² Damaged epithelial cells were enmeshed in a luminal fibrin mass.⁸⁹ Even 2 weeks after onset of symptoms, patchy membranous bronchitis and bronchiolitis could be seen. The bronchiolitis is often described as necrotizing and may be observed as early as the second day of illness.⁸² An acute inflammatory response in the bronchial and bronchiolar epithelium may be seen in the absence of bacterial infection and has been documented in a lung biopsy from which influenza virus A was recovered in pure culture.⁸⁶

The interstitium of affected areas is congested and edematous and contains a mixed cellular infiltrate. Edema fluid, fibrin, blood, and inflammatory cells fill the air spaces to a varying degree (Figs. 12–1 and 12–2). The contribution of neutrophils to the cellular response varies from scanty to extensive.^{82,86,89,91} A dense, purulent inflammatory response is characteristic of bacterial superinfection. There may be areas in a pure influenza pneumonia, however, in which neutrophils are prominent. There may also be extensive fragmentation of cells, leaving a dusting of nuclear debris and making determination of the cell types more difficult (Fig. 12–1).

Hyaline membranes, which stain with periodic acid–Schiff reagent, are a prominent part of the alveolar

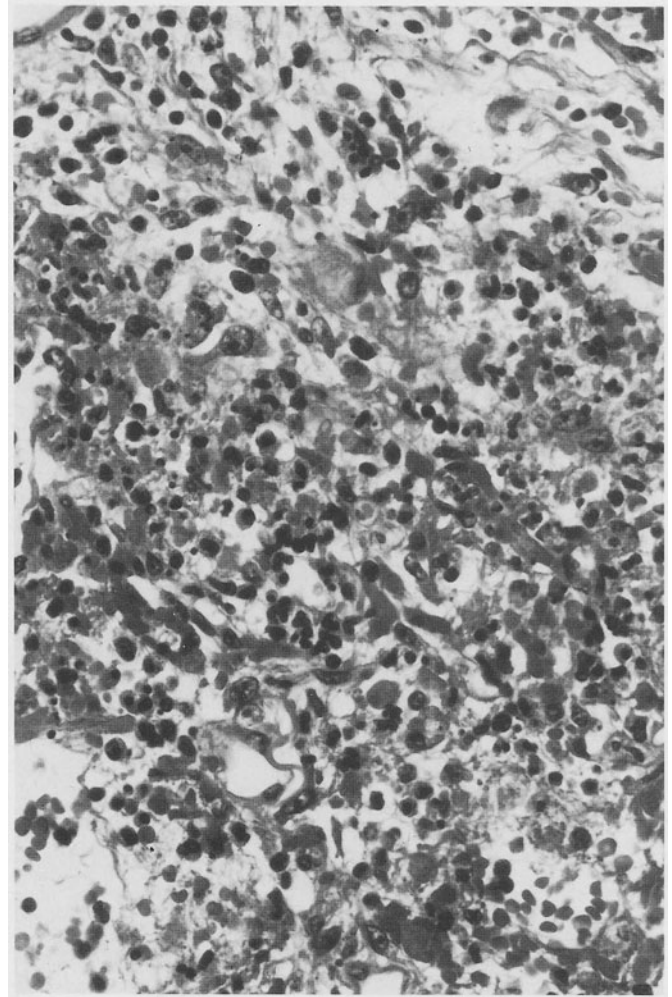


Fig. 12–1. Influenza virus A pneumonia. Boundaries between interstitium and air space are obscured by intense inflammatory infiltrate of mononuclear cells and polymorphonuclear neutrophils. Karyolysis and karyorrhexis produce cellular debris and nuclear fragments. Influenza virus A isolated from lung in pure culture. H and E, $\times 300$.

reaction to influenza virus A. They are apposed directly to the damaged alveolar walls or to the epithelium of the alveolar ducts and terminal bronchioles (Fig. 12–2). The hyaline membranes have been seen as early as the second day and as late as the third week of illness.⁸² As a nonspecific response to alveolar damage, they have been noted to be more prominent when other potentially damaging influences, such as oxygen therapy, have been present.

In patients who died or were biopsied after the first week of illness, reparative changes have been prominent. Metaplastic regeneration of the epithelium has been frequent and sometimes coexistent with residual acute damage. On occasion the proliferation has produced masses of epithelium that are sometimes de-

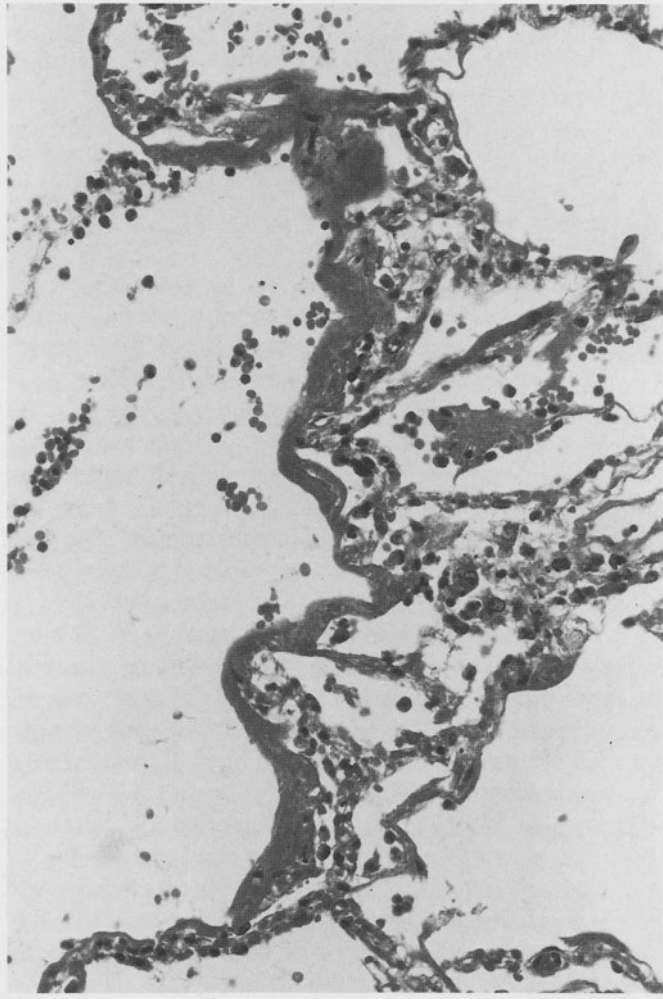


Fig. 12-2. Influenzavirus A pneumonia. Dense laminated hyaline membrane lines respiratory membrane of distal air space. Interstitium is edematous and contains scant mononuclear cell infiltrate. Red blood cells, fibrin, and few mononuclear leukocytes present in air space. Influenzavirus A isolated from lung in pure culture. H and E, $\times 150$.

scribed as "tumorlets."⁸⁹ Interstitial fibrosis has been observed in conjunction with residual inflammation,⁸⁷ and may become prominent as the lesion heals. Restrictive pulmonary function defects have been demonstrated in uncomplicated influenza,⁹² and resolution of the abnormalities may take many weeks.⁹³ Similarly, interstitial fibrosis and inflammation, obliterative bronchiolitis, and metaplasia may persist for weeks or months after an acute influenza A infection.⁹⁴ Influenzavirus A was isolated from the lung of one child 8 weeks after the acute infection, at a time when interstitial inflammation and mild fibrosis were present.⁹⁴ The extent to which influenza infection contributes to focal or diffuse pulmonary fibrosis is unknown.

The diagnosis of influenza infection can be made by isolation of the virus, by demonstration of antigen in respiratory specimens, or by documenting a seroconversion. Isolation of influenza A is made with equal facility in monkey kidney cell cultures and in embryonated eggs; influenza B is more efficiently recovered in cell culture. Traditionally, washings or swabs from the nose or throat have been the specimens of choice. With improvements in virologic techniques, sputum may also provide an acceptable specimen. Antigen has been demonstrated in nasal specimens and sputum by immunofluorescence, and monoclonal antibodies have been developed, but the sensitivity of antigen detection is less than that of culture.^{95,96} A common type-specific antibody to nucleoprotein antigen may be detected by complement fixation, providing a useful serologic screening tool. Strain-specific antibodies must be detected by hemagglutination inhibition.

Extrapulmonary symptoms are prominent during influenza, but inflammatory lesions outside of the respiratory tract are uncommon and identification of virus in extrapulmonary sites is even more rare. The best documented extrapulmonary inflammatory lesion is acute myocarditis, from which influenza A has been isolated.⁹⁰

Adenovirus

Adenoviruses were first recognized when spontaneous degeneration occurred in cell cultures that had been derived from tonsils and adenoidal tissue.⁹⁷ These viruses produce a variety of diseases in man and may persist for many months in a normal human host after an acute infection. Forty-one types of adenovirus have been identified. Ocular infections (including epidemic keratoconjunctivitis), acute hemorrhagic cystitis, and acute gastrointestinal disease in young children have been associated with adenoviruses. Rarely, meningoencephalitis and intussusception have been ascribed to these agents.

The most common adenovirus respiratory infections, comprising some 5% of acute respiratory disease in young children, are an exudative pharyngitis and a flu-like syndrome;⁹⁸ these diseases may be accompanied by ocular disease (pharyngoconjunctival fever). Epidemic respiratory disease has been concentrated in populations of military recruits during the winter months. Person-to-person spread by the respiratory route is presumed. Epidemics of adenovirus infection in military camps have been distinguished from influenza epidemics by limitation of disease to new recruits, other personnel presumably having become immune.⁹⁷ Similar epidemics have not occurred in civilian populations, such as college students. Nosocomial transmission

of adenovirus infection has been demonstrated, however.⁹

Severe, even fatal pneumonia has occurred in recruits,⁹⁹⁻¹⁰¹ in children,* in immunosuppressed civilians,^{104,105} and rarely in apparently normal adults.^{8,9,106} A variety of adenovirus types has been associated with pneumonia, including types, 1,2,3,4,5,6,7,7-A, 11,21,31,35, and strains that were intermediate between two serotypes in antigenic composition. There do not appear to be any histopathologic changes that are type specific. Infection in immunosuppressed patients is similar to that in normal hosts, but is more severe and more frequently disseminated.^{97,107}

Two patterns of damage have been described consistently in adenoviral infections of the lower respiratory tract: destructive infection of the bronchi or bronchioles and interstitial pneumonitis.

A necrotizing inflammation affects the bronchial and bronchiolar mucosa, which is partially or completely sloughed into an obstructive intraluminal coagulum of fibrin, necrotic tissue, and inflammatory cells. The necrosis may extend completely through the epithelium, but the muscularis is usually preserved (Fig. 12-3). Specific mention is made in multiple reports of necrotizing inflammation involving the submucosal glands of the bronchi. With time, reparative proliferative changes become evident in the surviving mucosa.

An alveolitis, which may appear necrotizing, often accompanies the bronchiolitis. Edema and cellular infiltration of the interstitium are accompanied by an alveolar exudate of fibrin, edema fluid, and cells (Fig. 12-3). Hyaline membranes are prominent in some cases. Focal necrosis of the alveolar walls has been described.

Pyknotic nuclear debris provides a necrotizing appearance to the air spaces, even in the absence of abundant inflammatory cells. Neutrophils may be virtually absent from the lesion (Fig. 12-4)^{9,102} or may be a prominent part of the inflammatory response (Fig. 12-3).^{3,108}

These histologic changes are not specific for adenovirus infection. A presumptive etiologic diagnosis is provided by the distinctive intranuclear inclusions that are produced by this virus (Fig. 12-5). Two types of inclusions have been described.^{39,109} The first, which is eosinophilic and surrounded by a clear halo, resembles the inclusions of the herpesviruses. In its earliest form, there are multiple, small eosinophilic masses intermixed with basophilic chromatin and a prominent nucleolus. The intermixture of chromatin, eosinophilic inclusion, and clear halo may give the nucleus a honey-

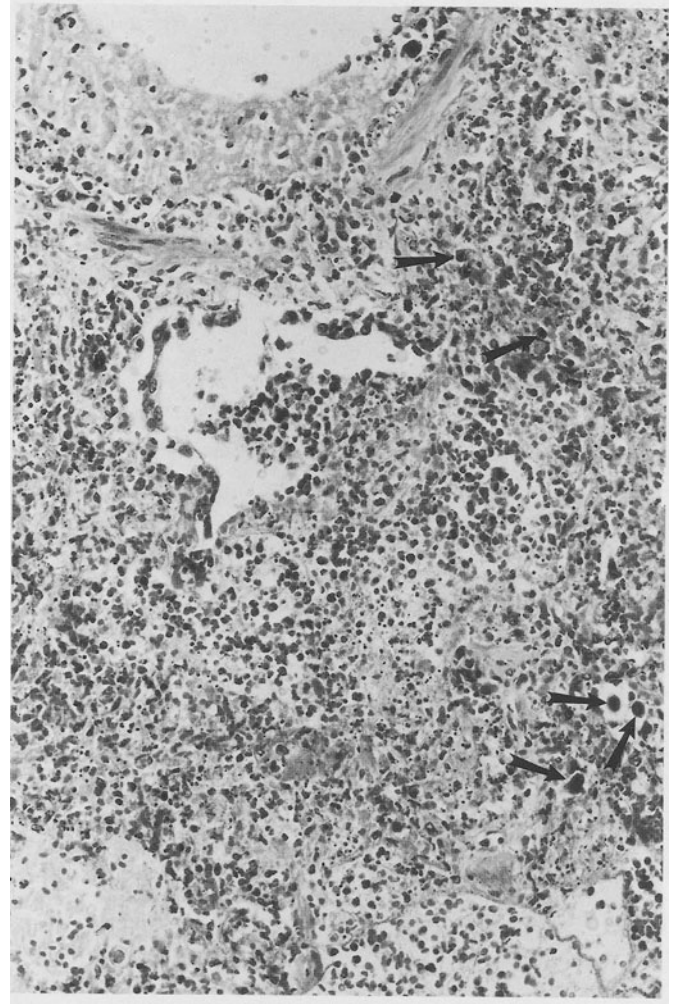


Fig. 12-3. Adenovirus pneumonia. Intensely inflammatory alveolitis in which mononuclear cells, polymorphonuclear neutrophils, and red blood cells are enmeshed in coagulum of fibrin. Extensive fragmented nuclear debris; dense adenovirus inclusions (smudge cells) can be noted even at this magnification (arrows indicate some obvious examples). Terminal bronchiole in left center is inflamed. At top, wall of larger, distal bronchiole is necrotic but muscularis remains intact. H and E, $\times 150$.

comb appearance. These structures are Feulgen negative.

The second type of inclusion is often more numerous in tissue sections. This inclusion is basophilic or amphophilic and Feulgen positive. It may be surrounded by a small halo, but often fills the entire nucleus and obscures the nuclear envelope. Cells with such inclusions are often referred to as "smudge" cells. They are quite distinctive and characteristic of adenovirus infection, but must be differentiated from enlarged, hyperchromatic nuclei in regenerating epithelium. It has been suggested from study of experimentally infected hu-

* References: 2,3,47,102,103.

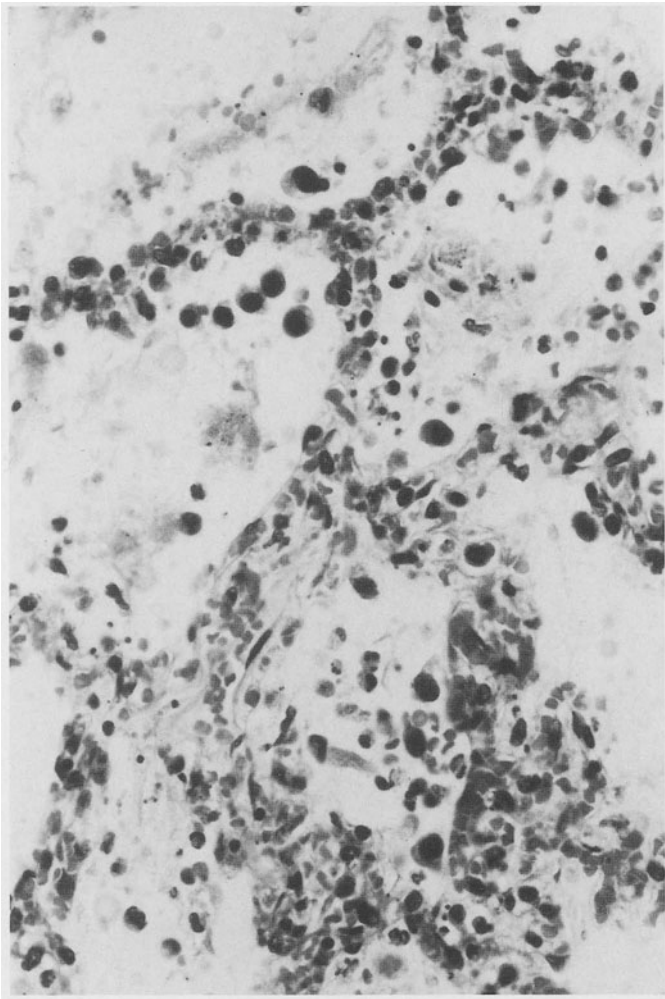


Fig. 12-4. Adenovirus, type 7 pneumonia with alveolar damage. Interstitium has increased numbers of cells; alveoli contain red blood cells, proteinaceous material, and scattered cells. Many epithelial cells appear dense because they contain mature adenovirus inclusions in nuclei. Although histopathological damage is present, this lesion is relatively noninflammatory in comparison to that pictured in Fig. 12-3. H and E, $\times 300$.

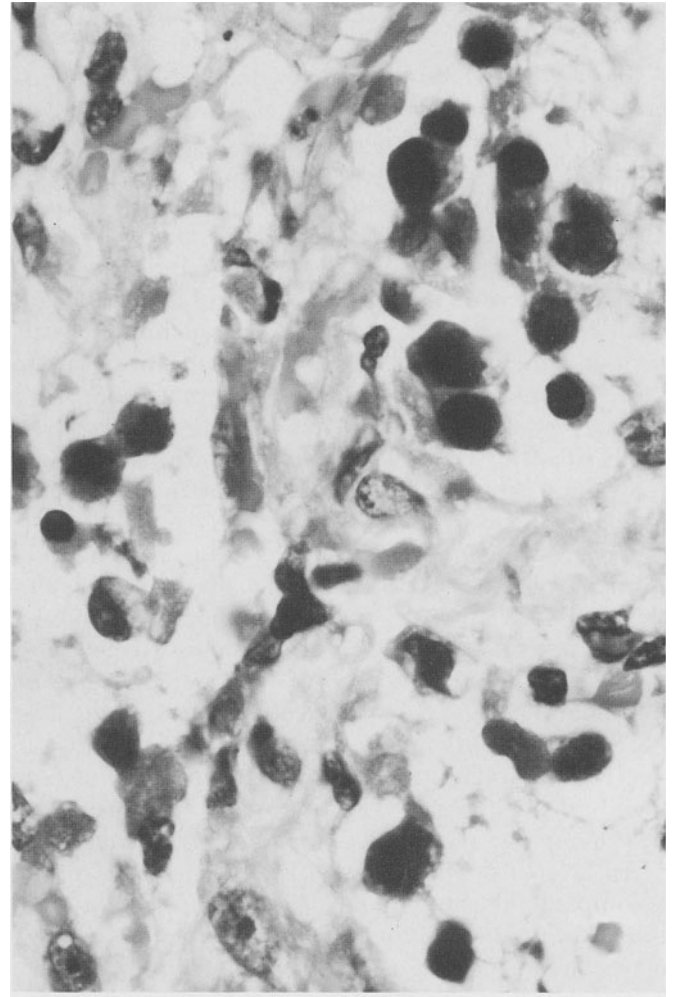


Fig. 12-5. Adenovirus pneumonia. Virtually all cells contain mature adenovirus inclusions. Nuclei are densely basophilic, making it difficult to "see into" them. In some cases boundary between nucleus and cytoplasm is obscured. These "smudge" cells must be distinguished from nonspecifically damaged or reactive epithelial cells. H and E, $\times 750$.

man tracheal epithelium¹⁰⁹ and human tissue³⁹ that the smudge cells are the mature form of inclusion, whereas the eosinophilic inclusion represents an earlier form. Other investigators have noted that the two types of inclusions may be physically separate in tissue sections and have suggested that they are developmentally disparate.³

Ultrastructurally, adenovirus inclusions consist of masses of virions packed in a paracrystalline array within the nucleus (Fig. 12-6). Adenovirus proteins are manufactured in the cytoplasm, where antigen may be demonstrated by immunofluorescence, but inclusions are not seen there. Fibrillar nuclear inclusions have

been seen in both adenovirus and influenza⁹¹ infections *in vivo*, but do not have their counterpart in infected tissue culture cells.

Although adenovirus accounts for only 5% of bronchiolitis in the United States,¹¹⁰ the acute inflammatory damage to the air spaces is impressive. Becroft¹¹¹ has described an equally impressive incidence of chronic complications after an epidemic of type 21 adenovirus infection. A distinctive feature of the epidemic was the protracted course of the infection, which waxed and waned over a period of several weeks; in some instances complete recovery never occurred. Similarly, Wohl and Chernick¹¹⁰ noted the protracted course of adenovirus

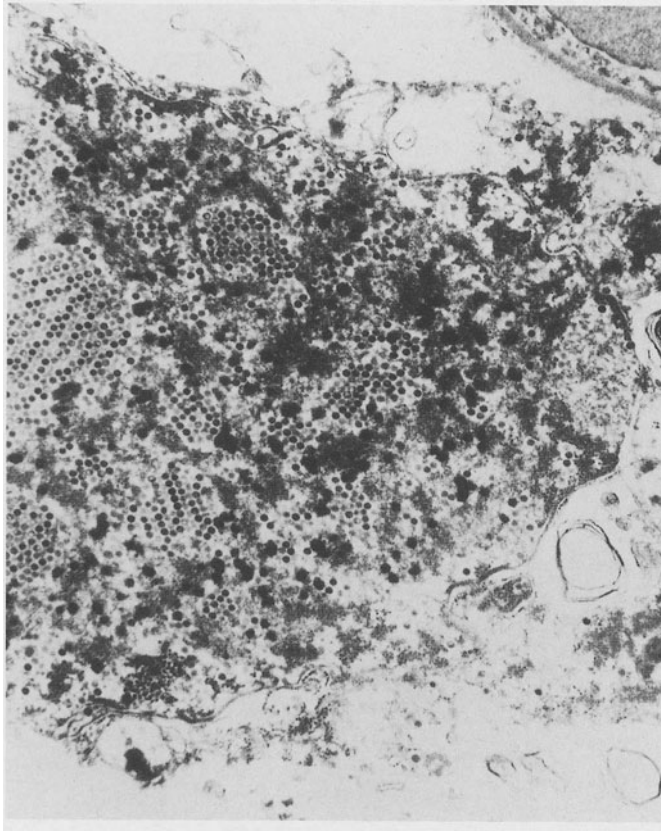


Fig. 12-6. Adenovirus pneumonia. Nucleus has been largely replaced by adenovirus virions packed in paracrystalline array. Portions of residual nuclear chromatin are pushed against nuclear membrane. Formalin-fixed lung tissue. $\times 12,500$.

infections and development of chronic pulmonary disease in as many as 60% of infants.

Bronchiectasis, bronchiolitis obliterans, and the unilateral hyperlucent lung syndrome have been reported as serious chronic sequelae to well-documented cases of adenoviral bronchiolitis or pneumonia. The rarity of cartilage in the walls of obliterated or stenotic bronchioles suggested to Becroft¹¹¹ that the primary lesion was in the terminal bronchioles rather than the small bronchi. The mucosa and submucosa were replaced by vascular connective tissue, the nature of the structures being clarified by the residual muscularis. Distal to the obstructive lesions, the alveolar ducts were dilated.

It has been suggested that certain populations, such as those studied by Becroft,¹¹¹ are highly susceptible to severe adenovirus infection.¹¹² Bronchiolitis obliterans has been documented after measles, whooping cough, influenza in infants, and ingestion of foreign bodies or toxic chemicals¹⁰⁰ (see Chapter 5).

The diagnosis of adenovirus infections can be made by isolation of the virus from respiratory specimens, by

demonstration of antigen in respiratory secretions, or by demonstration of a serological response to a common viral antigen. Inclusions have been demonstrated only infrequently in exfoliated respiratory cells.⁴⁰ Ciliocytophthoria has been described in exfoliated respiratory cells from patients with adenovirus infections.⁴³

Herpes Simplex

Herpes simplex virus is the virus most commonly isolated in most hospital laboratories.¹¹³ Two serological types have been defined, and either type of virus can produce any clinical syndrome. Gingivostomatitis, pharyngitis, esophagitis, encephalitis, and respiratory infections in adults are caused primarily by type 1 virus. Type 2 virus is the primary cause of genital infections, and may produce meningitis and disseminated neonatal infection, including pulmonary lesions. Antibody to type 1 develops during the first decade of life, whereas antibody to type 2 herpes simplex begins to appear in the teenage years.

Herpes simplex viruses occur only in man, and both types are spread by contaminated secretions. Once they have produced a primary infection, they may become latent in ganglia, from which site reactivation can occur repetitively. Asymptomatic shedding of virus is well documented in both the oral cavity¹¹⁴ and in the genital tract, so that an active lesion is not required for transmission of an infection.

Herout and colleagues¹¹⁵ first suggested that herpetic tracheobronchitis and pneumonia might be more common than suspected. It is unclear whether the respiratory disease is of recent occurrence or whether the diagnosis was missed previously. Nash¹⁴ found that 9 of 10 cases of respiratory infection by herpes simplex had been missed clinically and pathologically.

Most herpetic infections of the lower respiratory tract occur in individuals whose defense mechanisms are compromised in some manner. The defects may be systemic or local. Newborn infants,¹¹⁶ patients with burns,^{117,118} and those with immunosuppressive diseases or treatments¹¹⁹ are at increased risk of developing herpetic respiratory infection. Patients with tracheostomies or endotracheal tubes also have a greater risk of infection, although intubation is not a prerequisite for the infections.¹² The source of virus is usually the maternal vagina in neonates and the oropharynx in older children and adults. Mucocutaneous herpesvirus infection preceded respiratory disease in 17 of 20 individuals from whom herpes simplex virus was isolated at autopsy.¹¹⁹

The distribution of the pathologic lesions, prominence of tracheobronchial pathology, and association of infection with conditions that favor contamination of

the lower tract all suggest that aspiration of oral secretions is the most common pathogenic mechanism.¹¹⁹ Ramsey and colleagues¹¹⁹ noted that diffuse interstitial pneumonia was frequently associated with disseminated infection, whereas focal pneumonia was more commonly associated with lesions in the trachea and bronchi. Focal lesions, often of a miliary nature, may also occur after disseminated infection and viremia, such as occurs in disseminated herpes simplex infections. The miliary lesions cannot be differentiated from disseminated varicella-zoster infection on morphologic grounds alone.

Several patterns of pulmonary damage occur. Ulcerative tracheobronchitis, which may also be accompanied by necrotizing pneumonia, is the most common manifestation of infection.¹¹⁹ The surface of the ulcerated area is covered with a fibrinopurulent exudate containing necrotic cells, nuclear debris, fibrin, and inflammatory cells (Fig. 12-7). The infection may extend into the submucosal mucous glands. Polymorphonuclear neutrophils are a prominent part of the inflammatory response.¹⁴ Necrosis of large portions of the epithelium may lead to sloughing of the mucosa and formation of a thick pseudomembrane, which may obstruct the airway.¹²

The accompanying pneumonitis is usually patchy, reflecting the focal endobronchial source of the infection. A necrotizing pneumonia results in a microscopic appearance that resembles the tracheal ulcers. The air spaces are filled with a coagulum of fibrin, necrotic cells, prominent fragmented nuclear debris, and inflammatory cells. The necrotizing appearance, prominence of neutrophils in the exudate, and bronchial distribution of the lesions may lead the unsuspecting pathologist to classify the lesion as bacterial in origin (Fig. 12-8). Nash¹⁴ found 10 cases of herpetic lower respiratory infection in 1,000 consecutive autopsies at the Massachusetts General Hospital. Only 1 of the 10 cases had been diagnosed originally as a viral infection, presumably because the pathologist did not scrutinize the tissue for the characteristic inclusions.

Diffuse interstitial pneumonitis, which may also be necrotizing and hemorrhagic,¹²⁰ and miliary lesions without obvious relationship to the bronchial tree appear to be less common manifestations of herpetic lower respiratory infection (Fig. 12-9). Tuxen and colleagues,¹²¹ however, demonstrated morphologic and virologic evidence of herpes simplex infection in the lungs of 14 patients (30%) with adult respiratory distress syndrome (ARDS).¹²¹ The herpetic infection was associated with an increased need for prolonged respiratory support and an increased frequency of late mortality. The nature of the relationship between the herpes infection and the ARDS was not clear.

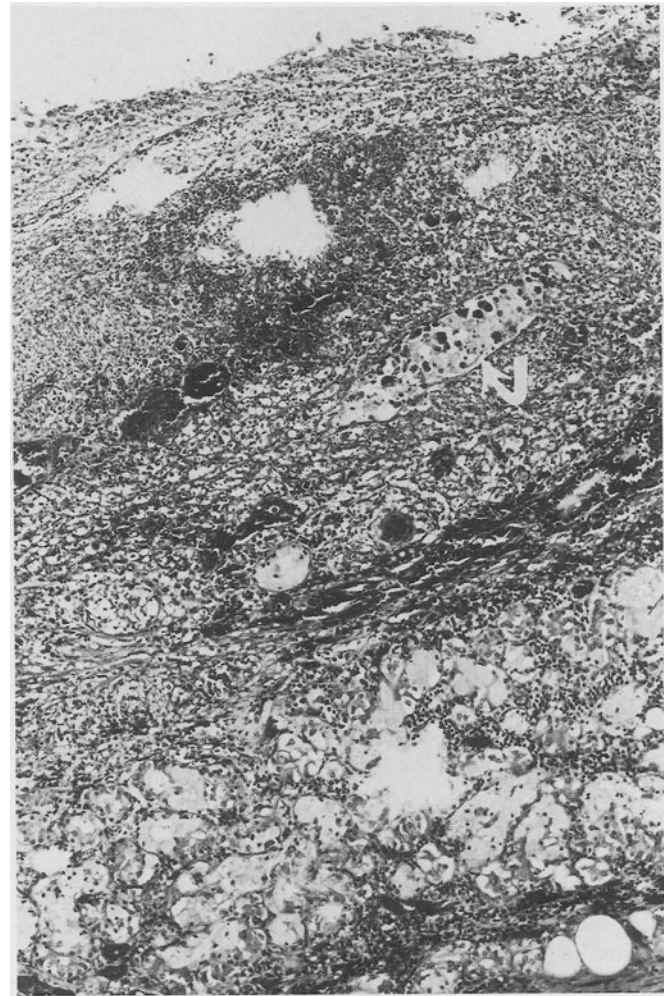


Fig. 12-7. Herpes simplex bronchitis. Mucosa and submucosa of this major bronchus are necrotic. Epithelium is replaced with coagulum of necrotic tissue, fibrin, red blood cells, mononuclear cells, and polymorphonuclear neutrophils (top). Dense, inclusion-bearing cells are visible even at this magnification (*white arrows*). Inflammation has extended from lumen through submucosal mucous glands to muscularis. H and E, $\times 150$.

A presumptive etiologic diagnosis of herpes simplex infection may be rendered if the characteristic intranuclear inclusions are demonstrated²⁹ (Fig. 12-10). The inclusions of both types of herpes simplex virus and varicella-zoster virus, also a member of the herpesviridae, are identical. Initially, the nucleus enlarges and rarefies, the nucleolus is dispersed, and multiple masses of light-staining, amphophilic material are outlined by strands of basophilic chromatin. The classical Cowdry type A inclusion forms by coalescence and condensation of the smaller masses. The type A inclusion is a central, eosinophilic nuclear mass, which is surrounded by a halo and peripherally margined, beaded chromatin.

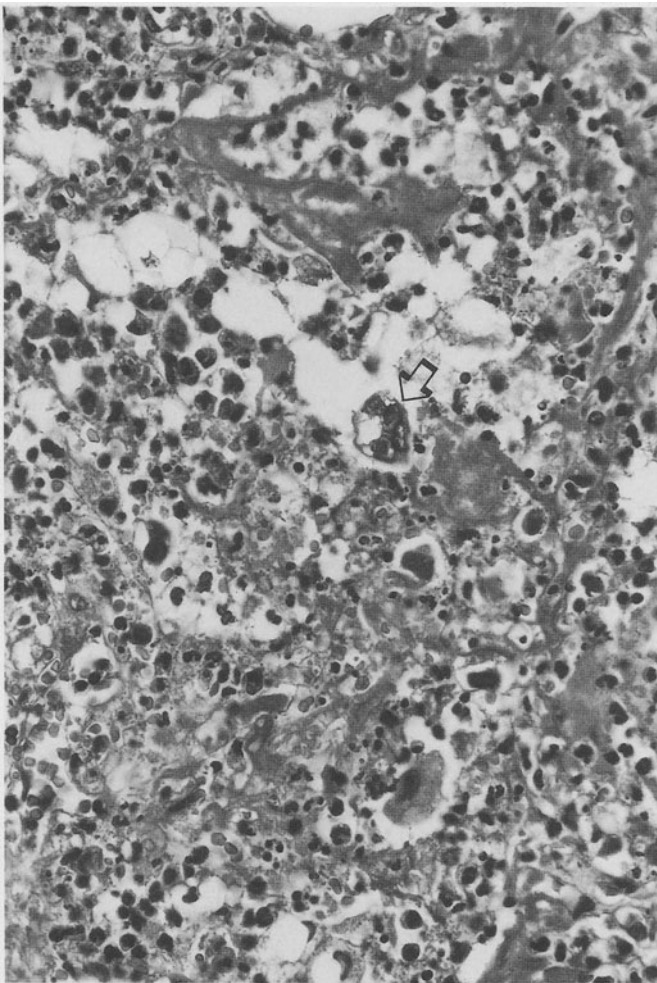


Fig. 12-8. Herpes simplex pneumonia. Alveolar structure is obliterated by necrotizing inflammation, which includes many polymorphonuclear neutrophils, fragmented nuclear debris, and fibrin. Such viral inflammatory lesions have been erroneously attributed to bacterial pathogens because of necrotizing character of inflammation. Multinucleated giant cell contains intranuclear inclusions that are surrounded by clear halo (*arrow*). Herpes simplex virus isolated from lung in pure culture. H and E, $\times 300$.

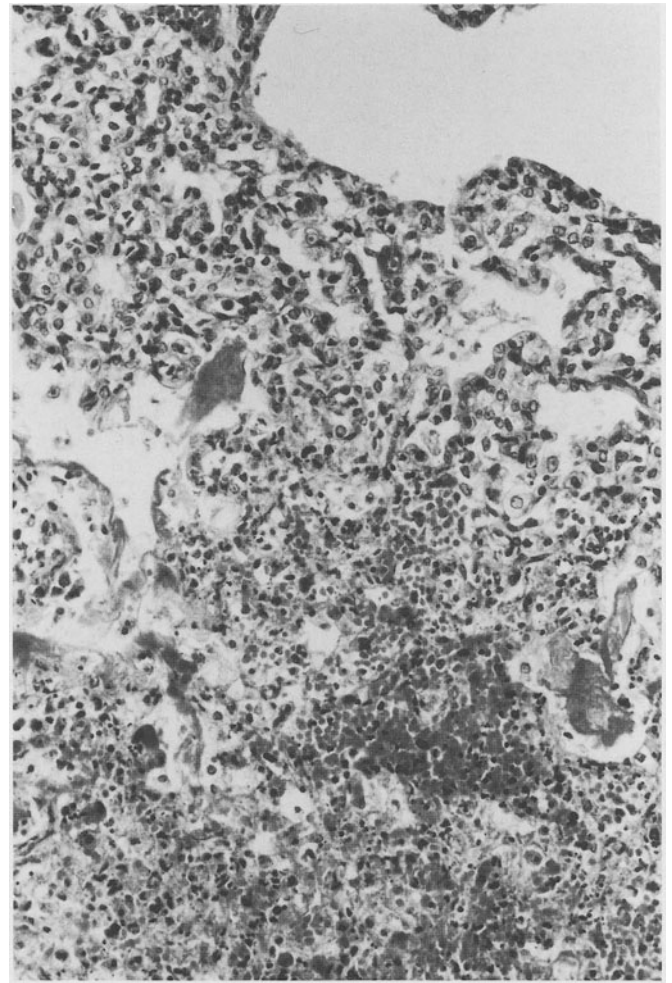


Fig. 12-9. Neonatal herpes simplex pneumonia. Edge of miliary lesion. Lung tissue is necrotic (below) with exudate of fragmented cells, hemorrhage, and proteinaceous material. Note dilated distal airway, possibly alveolar duct (top right). Interstitium is cellular but tissue is viable. Herpes simplex isolated in pure culture. H and E, $\times 150$.

As the inclusion becomes senescent, the central mass decreases in size, the halo widens, and the beaded character of the peripheral chromatin is lost. Ultrastructurally, the inclusion consists of viral deoxyribonucleoprotein and nucleocapsids. The naked nucleocapsids acquire a glycolipid envelope from the host cell as they pass from the nucleus to the cytoplasm (Fig. 12-11).

Multinucleation is a characteristic cellular reaction to both herpes simplex and varicella-zoster infection. Multinucleated giant cells with characteristic intranuclear inclusions are virtually diagnostic of infection by

one of these viruses. It should be remembered that parainfluenza, respiratory syncytial, and measles viruses can also produce multinucleated giant cells. Although multinucleated cells are not characteristic of cytomegalovirus (CMV) infection, their presence has been reported.⁴⁰ It has been suggested that the classical giant cells are less frequent in herpetic respiratory infection than in genital infection¹²² but they are, nevertheless, commonly present both in expectorated sputum and in histologic sections.^{12,40,123} The inclusions may be difficult to locate, particularly when there is a large amount of necrotic material present; they are best

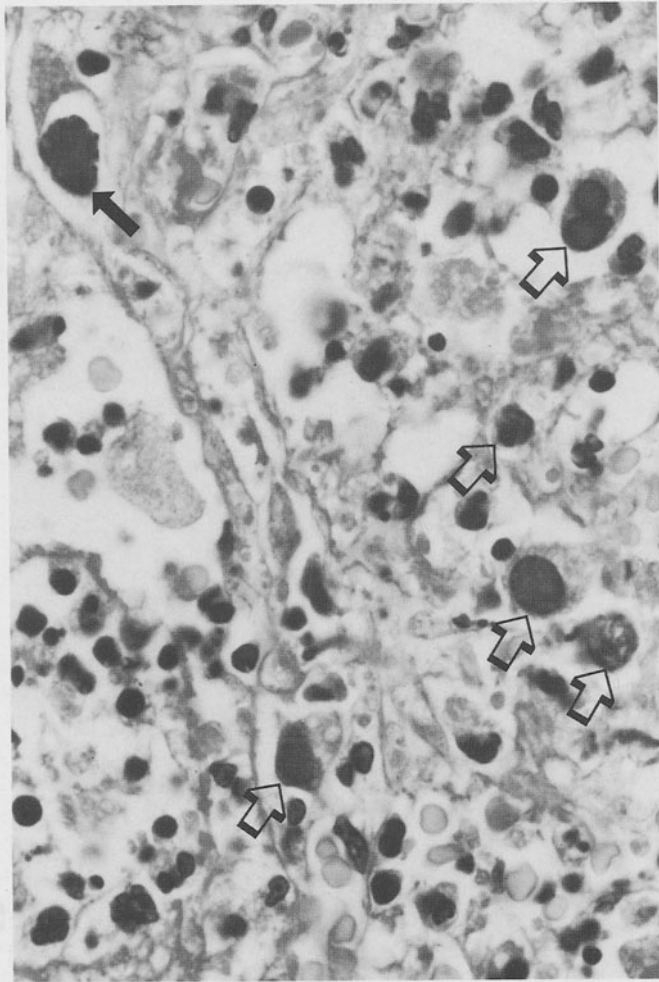


Fig. 12-10. Herpes simplex pneumonia. Multiple cells in inflammatory exudate contain intranuclear inclusions. Inclusions are eosinophilic, homogeneous, and fill virtually entire nucleus. *Open arrows* indicate several more easily identified inclusions in several phases of formation; one shows up better in color (*solid arrow*). Nuclear chromatin has been pushed to edge of nuclear membrane and is beaded in some cells. Herpes simplex virus isolated from lung in pure culture. H and E, $\times 750$.

sought in intact cells at the periphery of ulcers or necrotic foci.

The diagnosis of herpes simplex infections is best made by a combination of viral culture or antigen detection and morphologic methods. Recovery of the virus from respiratory secretions is not of itself sufficient for a diagnosis of herpetic disease, because 1%–5% of the population excretes virus in the oropharynx.^{12,114} On the other hand, demonstration of characteristic infected cells provides only presumptive identification of the etiologic agent. Serology is of little use in the diagnosis of herpes infections.

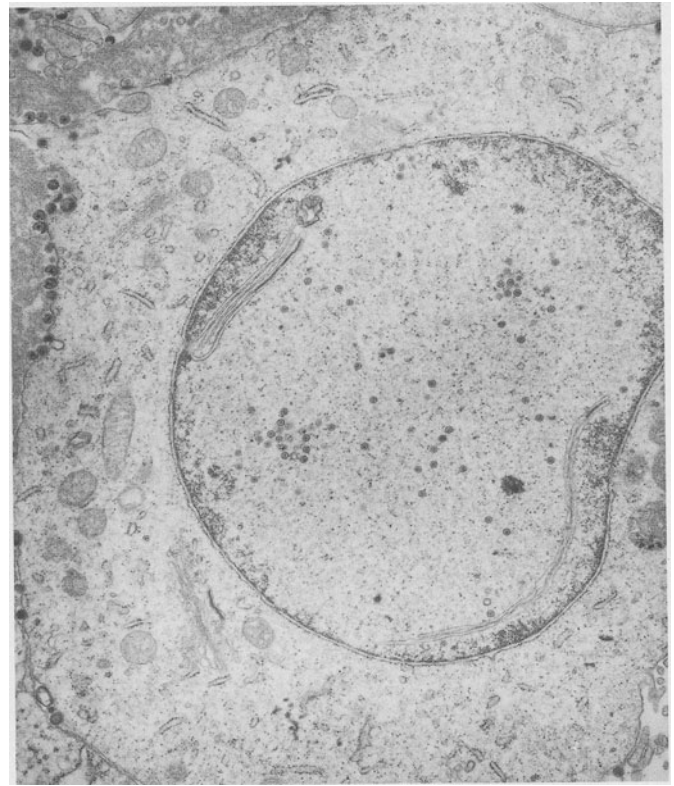


Fig. 12-11. Herpes simplex virus-infected MRC-5 fibroblast. Nucleus of tissue culture cell has been replaced by viral nucleoprotein. Scattered naked virions are evident in nucleus and nuclear chromatin has been pushed to nuclear membrane. Fully enveloped virions that have passed through nuclear membrane are evident in extracellular space at upper left of photomicrograph. $\times 12,000$.

Measles Virus

Measles is a highly contagious disease that can spread only from acutely infected individuals to susceptible contacts, probably by means of respiratory secretions. The frequency of measles has decreased dramatically since the introduction of vaccines in the 1960s. Outbreaks continue to occur in populations that are inadequately immunized.¹²⁴ The diagnosis is usually so obvious clinically that specimens are not submitted to the laboratory for confirmation, but atypical cases occur, particularly in patients who received the initial killed vaccine.¹²⁵

The most serious complications of acute measles infection are progressive infection, including pneumonia, and central nervous system disease, including postinfectious encephalitis and subacute sclerosing panencephalitis.¹²⁶ The progressive measles syndrome, in which pulmonary infection figures prominently, occurs in individuals who are immunologically compro-

mised by underlying disease or therapy.¹²⁷ The development of the characteristic skin rash in measles coincides with the appearance of the earliest immune response; in these immunodeficient patients the rash is absent or atypical.¹²⁸ Isolation of the virus from normal individuals is virtually impossible within 48 h after development of the rash¹²⁷ whereas the virus persists in those with pneumonia. Measles pneumonia has been described, however, in apparently normal individuals who developed a rash.¹²⁹

Measles may also be complicated by bacterial pneumonia¹³ or by other viral infections.¹²⁹ *Haemophilus influenzae* was considered the cause of viral influenza in 1918 because of its frequent occurrence as a secondary invader. Similarly, a small gram-negative bacillus, possibly also *Haemophilus*, was suggested as a possible etiologic agent for measles because it was found in the lungs of patients who died shortly after the onset of the rash and had giant cell pneumonia.¹³⁰ In South Africa adenovirus and herpes simplex virus were common secondary pathogens in fatal cases of measles.¹²⁹ Goodpasture and associates¹³¹ described a diverse group of viral pneumonias in infants. It is probable that the lesions observed in the cases of measles were caused by herpes simplex virus or by adenovirus. Cytoplasmic inclusions and giant cells were not described by these accomplished investigators; the illustrations depict structure that are compatible with or strongly suggest viral superinfection.

Macroscopically, the infiltrates of measles pneumonia are diffuse, patchy, or even nodular.¹²⁸ The nodular lesions have a distribution that is primarily peribronchial and peribronchiolar.¹³⁰ A hemorrhagic component may be present.¹³² Microscopically, the small airways and alveoli are primarily affected. There is an interstitial pneumonia in which mononuclear cell infiltration predominates (Fig. 12–12). The air spaces contain fibrin and inflammatory cells; hyaline membranes may be present. The bronchioles show epithelial hyperplasia and extensive squamous metaplasia occurs, even with the formation of nodular epithelial masses. Macroscopic and microscopic pulmonary thromboemboli have been described.¹³³

The most distinctive abnormality in measles pneumonia is the multinucleated giant cell, which contains eosinophilic intranuclear and intracytoplasmic inclusions (Fig. 12–13). Ultrastructurally, the inclusions consist of fibrillar viral ribonucleoprotein.¹³³ The giant cells are often numerous. They may be flattened against the respiratory membrane or heaped up in masses. The intranuclear inclusions are eosinophilic and resemble those of herpesviruses.³⁹ The cytoplasmic inclusions are brightly eosinophilic and may form very large masses¹³⁴ (Fig. 12–13).

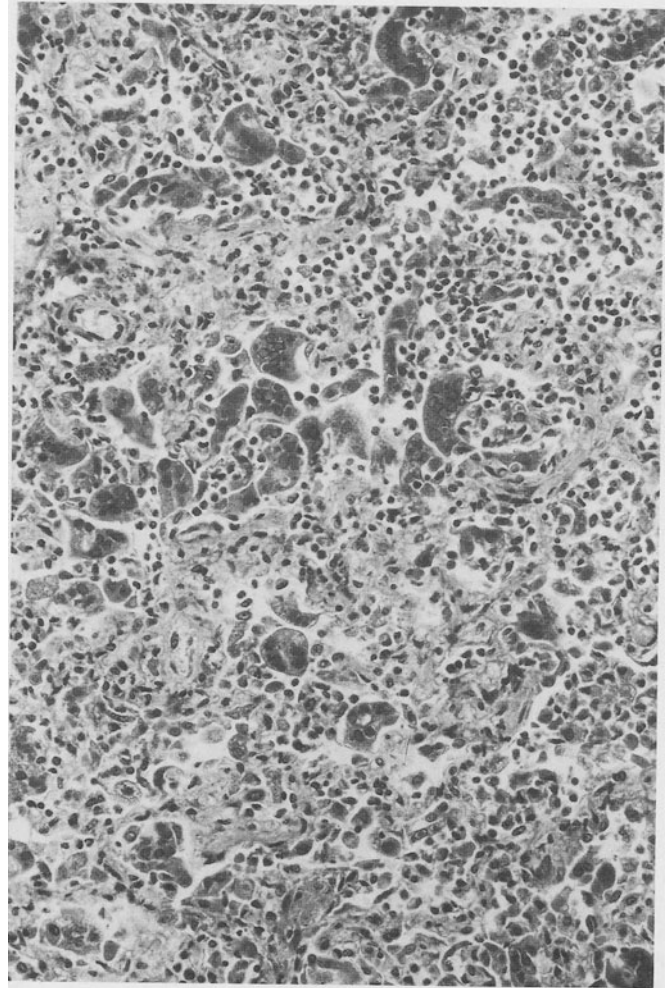


Fig. 12–12. Measles pneumonia. Architecture of air spaces has been obliterated by mixed inflammatory infiltrate, proliferation of alveolar epithelial cells, and formation of multinucleated epithelial cells. Intranuclear inclusions are easily seen in syncytial giant cells, even at low magnification; cytoplasmic inclusions also evident. H and E, $\times 150$.

In 1910 Hecht described giant cell pneumonia in children. The similarities between Hecht's pneumonia and the lesion seen in both measles and distemper infections was recognized in 1945,¹³⁵ but the virologic association of giant cell pneumonia and measles virus was first made by Enders and colleagues.¹³⁶

There are many other causes of giant cells in pulmonary lesions—infectious and noninfectious, viral and nonviral. The virologic differential diagnosis of interstitial pneumonia with giant cells includes respiratory syncytial virus and parainfluenza virus. A diagnosis of measles pneumonia can be made confidently if the characteristic intranuclear and intracytoplasmic inclusions are present, if there is a clinical history of measles, if the virus is isolated or identified immunologically, if a

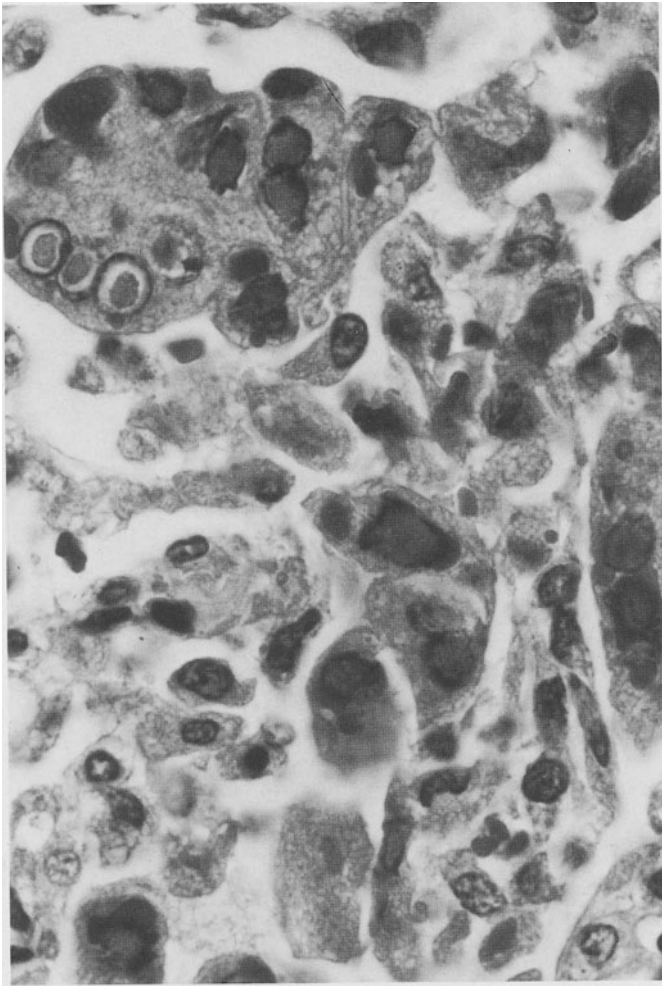


Fig. 12–13. Measles pneumonia. Many cells in air spaces, both uninucleate and multinucleate, contain inclusions. Intranuclear inclusions resemble those of herpes simplex virus; they are homogeneous and fill nucleus, pushing chromatin to periphery of nuclear membrane. Artefactual halo separates several intranuclear inclusions in multinucleated giant cells from residual chromatin. Cytoplasmic inclusions are brightly eosinophilic and vary in size. H and E, $\times 750$.

serological response to the virus is documented, or if there are systemic abnormalities, such as lymphoid hyperplasia with Warthin–Finkeldey giant cells.

In the early 1960s, a formaldehyde-inactivated measles vaccine was introduced. Subsequently, it was recognized that children who received the vaccine developed an atypical measles syndrome in which the rash was accentuated peripherally and segmental pneumonia was prominent. This vaccine failed to induce immunity to a viral surface glycoprotein (F protein) that is essential to prevent spread of the infection.¹²⁶ Very little is known about the pathology of the atypical reaction. Annunziato and colleagues¹³⁷ described 17 patients, of

whom 15 had dense lobar or segmental pulmonary consolidation. Hilar or mediastinal lymphadenopathy and pleural effusions were seen in a minority of cases. Some infiltrates persisted and resolved into large nodular masses.¹³⁸ The differential diagnosis of nodular pulmonary infiltrates is extensive, but the lesions are sufficiently distinctive that the diagnosis of atypical measles syndrome can be suggested.¹³⁹

Respiratory Syncytial Virus

Infection with respiratory syncytial virus occurs repeatedly throughout life including infancy to old age. Epidemics, which occur regularly in most communities, are separated by alternating long (13–16 months) and short (7–12 months) intervals.¹¹⁰ Virtually all seronegative infants exposed to their first epidemic become infected. In a study of intrafamily transmission of viral infection, the secondary attack rate for RSV infection within families was 27% for all children and 45% for infants.¹⁴⁰ This virus is an important cause of nosocomial infection on pediatric hospital wards,^{141–143} and has been reported as the cause of nosocomial pneumonia in adults.

Immunity to RSV is short lived and incomplete, although recurrent infections tend to be milder. The clinical syndrome varies from upper respiratory infection to croup, bronchitis, bronchiolitis, and interstitial pneumonia. The initial infection usually occurs in infants between 6 weeks and 6 months of age, 25%–40% of whom suffer lower respiratory tract infection (see also Chapter 8). Infection in infancy is associated with greater severity of illness; the severe involvement of bronchioles accounts for wheezing and air-trapping. Among children from whom RSV was isolated, 38% had bronchiolitis and 25%, pneumonia. Although RSV is the cause of 75% of cases of bronchiolitis, adenoviruses, rhinoviruses, parainfluenza virus (particularly type 3), mumps virus, influenza viruses, and *Mycoplasma pneumoniae* may also cause this syndrome. Immuno-compromised children may develop a prolonged, sometimes fatal course of RSV pneumonia.

RSV is usually transmitted to the upper respiratory mucosa by the fingers. After an incubation period of 4–5 days, patients develop rhinorrhea and anorexia. Viral replication occurs in the nasopharynx, and during the next 1–3 days virus spreads along the airways to the lower respiratory tract. Then cough, tachypnea, low-grade fever, rales, and rhonchi occur. Signs of bronchiolar obstruction and air-trapping, including expiratory wheezes, intercostal and substernal retractions, atelectasis, and hyperresonance may also develop.^{144–146} Severe illness is further characterized by dyspnea and cyanosis. The pathophysiology of bronchiolitis includes reduced pulmonary compliance, increased pulmonary

resistance and end expiratory volume, and hypoxemia that is caused by decreased ventilation in the presence of normal perfusion.

Newborn infants and adults infected with RSV usually have upper respiratory infections; elderly patients often have prolonged bronchitis with tachypnea, wheezing, cough, and fever.¹⁴⁷ Hospitalization with RSV infection is most likely to occur during the first year of life. The mortality rate is 1% in normal children and as much as 37% in those with underlying diseases, particularly congenital heart disease and bronchopulmonary dysplasia. RSV was the most common virus isolated in a series of sudden infant deaths.⁴ In developing countries, pediatric lower respiratory infections cause 4.5 million deaths annually, approximately 30% of all childhood deaths. RSV, parainfluenzaviruses, and other respiratory agents are the most frequent etiology; however, mortality occurs more often in bacterial pneumonias.¹⁴⁸ Fatal RSV pneumonia has also been reported rarely in adults.¹⁴²

RSV infection is diagnosed best by viral culture or by demonstration of RSV antigen in respiratory secretions. Among infants and young children with lower respiratory tract infections, RSV is the most frequent viral isolate. Viral culture and immunologic identification of RSV antigens in washings from the nasopharynx are similar in sensitivity and specificity. Several immunologic approaches have been used, including immunofluorescence and immunoenzyme tests of aspirated epithelial cells and enzyme or radioimmunoassays on the nasopharyngeal washings.^{31–34} Immunoperoxidase staining reveals RSV antigen in bronchial, bronchiolar, and alveolar epithelial cells and alveolar syncytial giant cells.¹⁴⁹ Recently circulating RSV antigen was also demonstrated in mononuclear cells in the peripheral circulation.¹⁵⁰ Serologic diagnosis may be achieved by demonstration of a fourfold or greater rise in titer of antibodies by complement fixation, neutralization, and enzyme immunoassay.

The cytoplasm of respiratory epithelial cells is the site of RSV replication. Final assembly of viral matrix proteins, nucleocapsids, and surface glycoproteins occurs at the cell membrane, which is converted into the viral envelope by the process of budding. Immunofluorescence with monoclonal antibodies to nucleocapsid proteins demonstrates cytoplasmic antigen that varies from small particles to larger inclusions.⁴⁹ These structures correspond to the cytoplasmic inclusions that are seen when infected cells are stained with H and E or by the Giemsa method (Fig. 12–14). The 1–20 μm eosinophilic inclusions in epithelial cells often have a clear halo and are located in a paranuclear cytoplasmic location (Fig. 12–15).^{144,146,149}

RSV-infected cells may have a single nucleus, but are

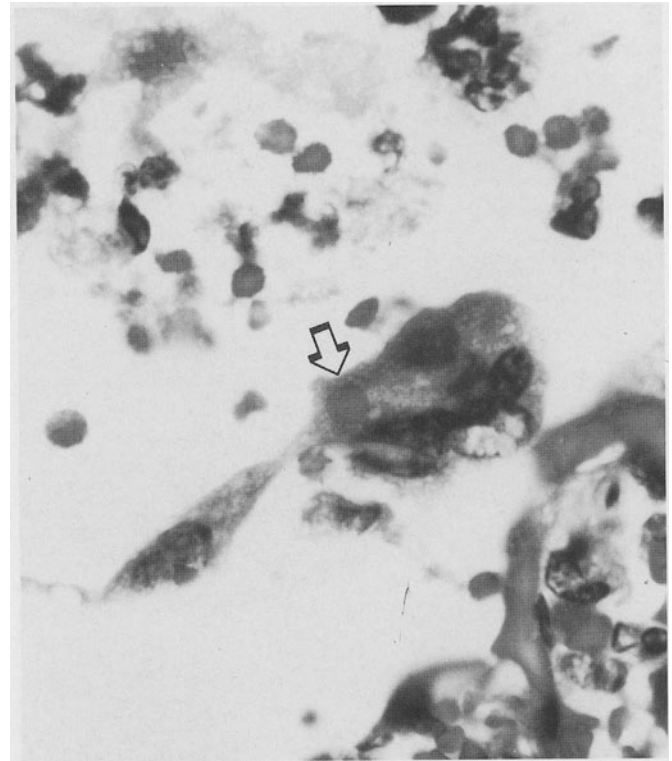


Fig. 12–14. Respiratory syncytial virus pneumonia. Air space contains proteinaceous material, red blood cells, and scant inflammatory cells. Multinucleated (syncytial) epithelial giant cell contains single, discrete cytoplasmic inclusion (arrow). H and E, $\times 750$.

commonly multinucleated. The virus has a fusion protein that plays a role in the entry of virus into the host cell and the coalescence of adjacent cells to form multinucleate syncytial giant cells (Fig. 12–14). This phenomenon, which is remarkable in cell cultures infected with RSV, suggested the name of the virus. Both multinucleate syncytial and uninuclear cells show effects of cell injury, including necrosis. The syncytial giant cells are observed *in vivo*, and RSV infection must be included in the differential diagnosis of giant cell pneumonia, especially in the immunocompromised host. Bronchiolitis may be produced by RSV without formation of giant cells, in which case immunologic or virologic studies must be performed to elucidate the etiology of the infection.¹⁵¹

Lungs from patients with RSV bronchiolitis are over-expanded and do not collapse when the thorax is opened.¹⁵² Chest radiographs may show a depressed diaphragm, patchy areas of atelectasis, and air-trapping, which is manifested by hyperlucency.¹⁴⁴ Microscopic examination reveals nipple-like projections of epithelial cells into the lumens of the airways, necrosis of the ciliated epithelium of bronchioles and bronchi,

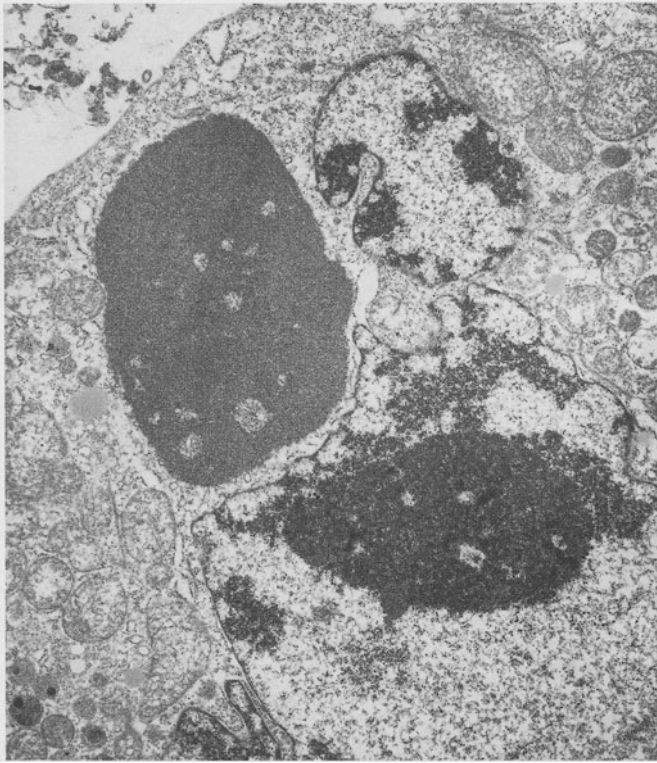


Fig. 12–15. Respiratory syncytial virus-infected HEp-2 cell. This human cell line was derived from laryngeal carcinoma and is preferred means for cultivating RSV. Large cytoplasmic inclusion is composed of fibrillar ribonucleoprotein, but difference in density between viral RNA and nucleolar RNA is evident. Remnants of cytoplasm within inclusion correspond to vacuoles in light microscopic sections. $\times 9,500$.

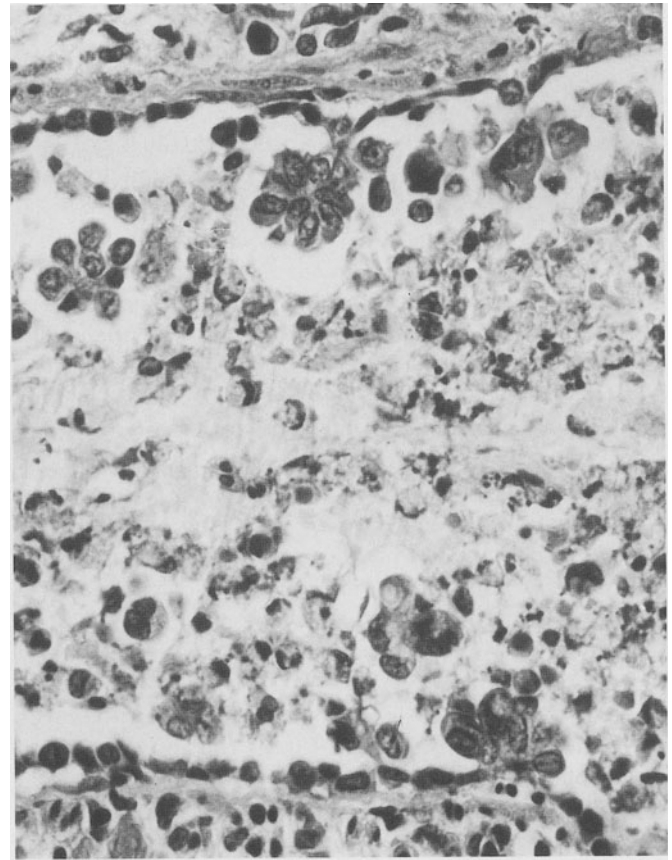


Fig. 12–16. Respiratory syncytial virus bronchiolitis. Epithelium of small bronchiole is extensively damaged, leaving intact basal layer. Several distinctive papillary projections of epithelium are present. Lumen filled with mononuclear cells, desquamated epithelial cells, and debris. H and E, $\times 450$.

and inflammatory infiltration of the epithelium and submucosa (Fig. 12–16). The inflammation consists predominantly of lymphocytes and macrophages, which extend into adjacent alveolar septa. Necrotic cellular debris, fibrin, and mucus accumulate in the bronchiolar lumina. In the air spaces themselves there is hyperplasia of the alveolar lining cells, alveolar edema, and on occasion hyaline membranes.^{144,146,151–154} Other bronchial and bronchiolar changes include a cuboidal-to-flat epithelium that represents early regeneration and a multilayered epithelium that is characteristic of regenerative hyperplasia.

Interstitial pneumonia is characterized by an infiltrate of mononuclear cells in alveoli and alveolar septa, alveolar edema, and hyaline membranes. Bronchiolar injury may also be present. RSV antigen and infectious virus are more abundant in the lungs of patients with interstitial pneumonia than with bronchiolitis.^{154,155}

The pathogenesis of the bronchiolar lesions and of cellular injury by RSV is unclear. RSV does not shut off

host cell protein synthesis as do most cytopathic viruses. Yet, RSV-infected cells undergo fusion and suffer direct cytopathic injury in vitro and in vivo (see Fig. 12–14). Bronchiolitis results in part from the proclivity of the virus to infect small, easily obstructed bronchioles during the first year of life, in part from direct viral injury to respiratory epithelium, and partially because mucus accumulates in the absence of ciliary action.¹⁵⁶

RSV bronchiolitis is associated with RSV-specific IgE that is bound to nasal epithelial cells, histamine, and fewer suppressor T lymphocytes.^{157–159} These findings suggest that a component of the bronchiolar obstruction may be immunopathologic; IgE and histamine-mediated bronchospasm could result from a failure of the suppressor subset of T lymphocytes to limit IgE production. RSV-specific serum IgG₄ is detected at higher levels in bronchiolitis than in upper respiratory infection or pneumonia without wheezing and has been suggested as associated with hypersensitivity phenomena.¹⁶⁰ Leukotrienes may also play a role in the inflam-

matory events of RSV bronchiolitis.¹⁶¹ An additional, age-dependent pathophysiologic factor is the presence of poor collateral ventilation in infant lungs, which favors atelectasis.

Acute complications of RSV infection include otitis media and bacterial superinfection, particularly by *Haemophilus influenzae*. Long-term sequelae in survivors apparently occur frequently as chronic disease of the airways. (See Bronchiectasis, Chapter 5.) Therapeutic approaches include ribavirin aerosol and intravenous neutralizing anti-RSV immunoglobulins, which may exert moderate ameliorating effects on viral replication and spread and the subsequent pathologic process.^{162,163}

Parainfluenza Virus

Human parainfluenza viruses comprise the antigenically distinct types, 1, 2, 3, 4A, and 4B.¹⁶⁴ All types cause infections of the respiratory system; the attack rates and the frequency with which the lower respiratory tract is affected vary among the five serotypes. Parainfluenza viruses cause 8% of acute respiratory disease in hospitalized children.¹⁶⁵

The clinical manifestations include upper respiratory infection, laryngotracheobronchitis (croup), bronchitis, bronchiolitis, and interstitial pneumonia. Parainfluenzavirus 3 accounts for the greatest portion of pneumonia, bronchiolitis, and bronchitis. Parainfluenzaviruses 1 and 2 are the major etiologic agents of croup. Signs and symptoms correlate with the anatomic location of the viral infection; they may include low-grade fever, rhinorrhea, hoarseness, cough, pharyngitis, stridor, rhonchi, wheezing, rales, and retractions.^{166,167}

Transmission by person-to-person contact or large droplets requires only a small inoculum of this virus, which survives very poorly on environmental surfaces. After an incubation period of 2–6 days, infection of nasopharyngeal epithelium may be followed by spread to the pharynx, larynx, trachea, bronchi, bronchioles, and alveoli. Clinical, epidemiologic, and pathogenetic similarities with RSV infection are remarkable, except for the maximal occurrence of parainfluenzavirus bronchiolitis in 6- to 12-month-old children instead of at 1–3 months of age for RSV infection.¹⁶⁸

Immunity to parainfluenza viruses is incomplete. Reinfections with both heterotypic and homotypic strains are frequent.¹⁶⁶ Definitive diagnosis of parainfluenzavirus infections requires cultivation of the virus or specific detection of viral antigens, for example, by demonstration of viral antigen in nasopharyngeal secretions, using immunofluorescence.^{165,168,169} Serologic diagnosis is achieved by demonstration of a fourfold or greater rise in serum antibodies in

hemagglutination inhibition, complement fixation, or neutralization tests. Heterotypic antibody responses occur often, however, and confound type-specific serologic diagnosis.

The morphology of virus-infected cells in vitro depends on the type of virus. Types 2 and 3 may cause cell fusion, multinucleated syncytial giant cells, and cell death. Some parainfluenzavirus strains cause no perceptible cytopathic effect; these strains are detected by demonstration that guinea pig erythrocytes adsorb to infected cells (hemadsorption). Neuraminic acid-containing receptors in the red blood cell membrane bind to the viral attachment protein that is inserted into the cell membrane of the infected cell. Fusion to multinucleated giant cells is mediated by the concerted effects of the viral F protein and the hemagglutinin-neuraminidase protein in the cell membrane and causes cell-to-cell spread of virus. Virus-infected cells contain cytoplasmic aggregates of viral nucleocapsids that may occur as inclusion bodies.

Human infection with parainfluenzavirus rarely results in the patient's death. The respiratory epithelium, particularly ciliated cells, is the target of the virus.^{153,165,170} Viral antigen, which can be demonstrated by immunofluorescence in infected nasopharyngeal, tracheal, and bronchial epithelial cells, varies from cytoplasmic particles and poorly formed aggregates to large spherical or oval inclusions.^{165,171}

Immunologically competent patients may manifest acute laryngotracheobronchitis without pulmonary parenchymal lesions (Fig. 12–17) or as bronchitis with epithelial hyperplasia, moderate hyperplasia of alveolar lining cells, and interstitial pneumonia.^{153,165} Patients with T-lymphocyte deficiency who die after prolonged, progressive parainfluenzavirus infection have a different constellation of lesions. There is interstitial pneumonia, an exudative alveolar exudate, alveolar cell hyperplasia and hypertrophy, and interstitial fibrosis. The alveoli are lined by multinucleated giant cells, which may have cytoplasmic inclusions (Fig. 12–18).^{142,172–174} This lesion can be differentiated from RSV infection only by immunologic or virologic identification of the etiologic agent.

Parainfluenza viruses do not shut off host cell protein synthesis¹⁷⁵ and are variably cytopathic. As in RSV bronchiolitis, the airways are hyperactive, and immunopathologic mechanisms appear to be important.^{168,176} Virus-specific IgE appears in respiratory secretions earlier and in greater quantity in those patients who have parainfluenzavirus croup and bronchiolitis than in their counterparts who have infection of the upper airways. The amount of histamine in secretions is also greater in croup than in upper respiratory infection. There is a correlation between the severity of illness and

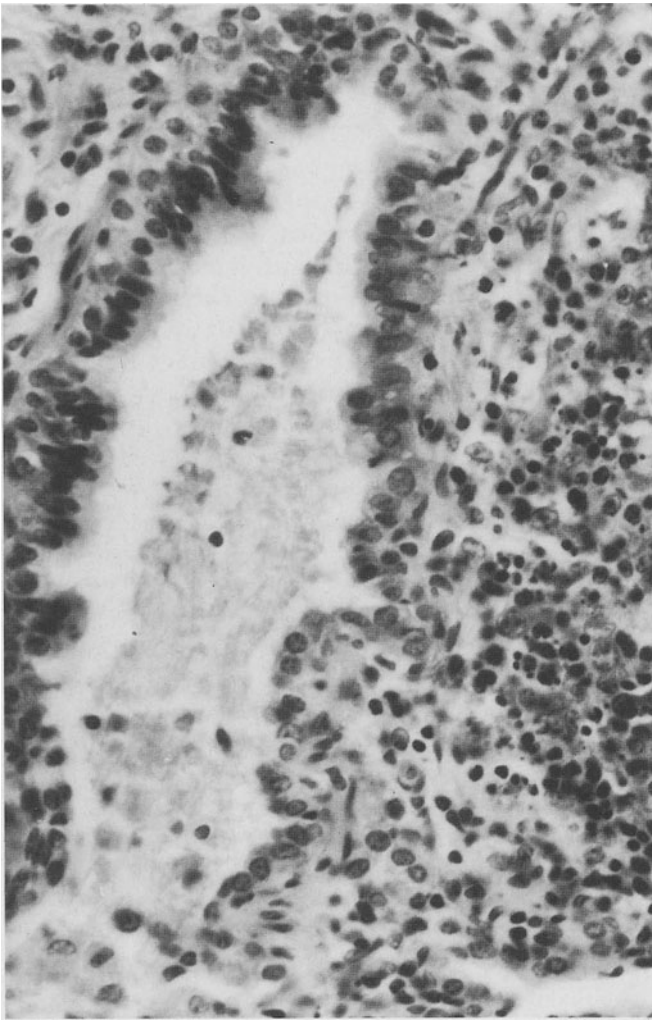


Fig. 12-17. Parainfluenzavirus 1 pneumonitis. Small bronchiole contains proteinaceous material and scant cells. Adjacent air spaces, best seen at right, are filled with mononuclear exudate with extensive nuclear fragmentation. No multinucleated giant cells present. Parainfluenzavirus 1 isolated from lung. Hematoxylin-eosin and stain. H and E, $\times 350$.

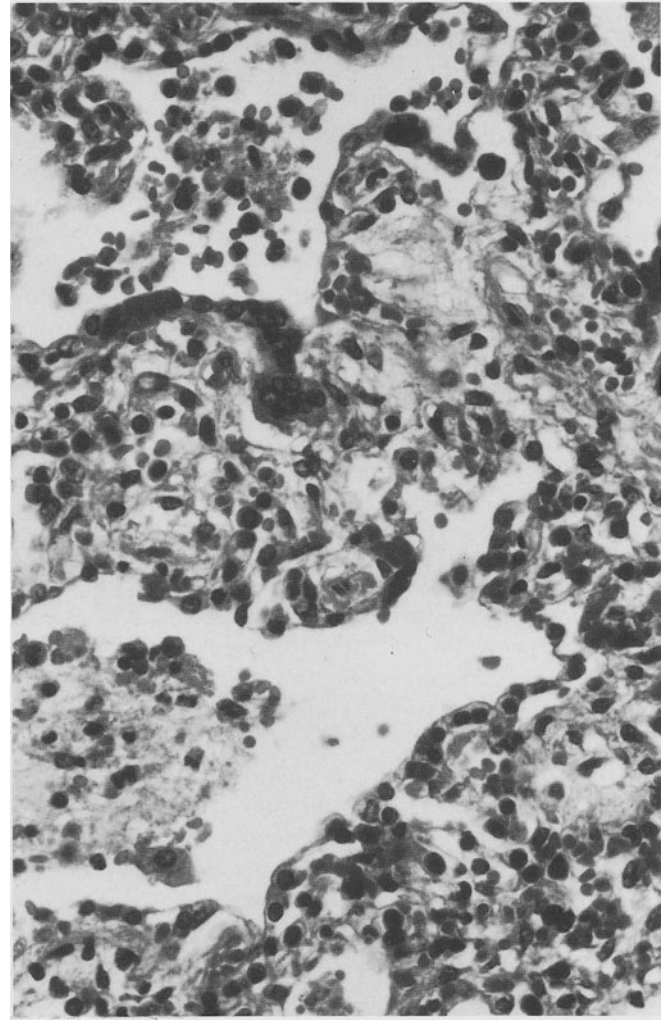


Fig. 12-18. Parainfluenzavirus 3 pneumonitis. Interstitium is edematous and heavily infiltrated by mononuclear cells. Alveoli contain fibrin, red cells, and mononuclear inflammatory cells. Several large multinucleated (syncytial) giant cells line alveolar membrane. Parainfluenzavirus 3 isolated from lung. H and E, $\times 300$.

the maximum quantity of virus-specific IgE and histamine in nasopharyngeal secretions. It is possible that the persistent abnormalities after parainfluenzavirus-associated croup and bronchiolitis result from congenitally hyperreactive airways rather than from viral damage to the airways.

Varicella-Zoster Virus

Varicella pneumonia is a rare complication of a common disease. The annual incidence of chickenpox in the United States is 1,500 cases per 100,000 people. A history of the illness can be obtained from 70%–80% of young adults; 60%–90% of adults who do not remem-

ber the infection have antibodies to varicella-zoster virus.

In contrast, varicella pneumonia is a disease of adults and immunocompromised or newborn children. Pneumonia was diagnosed by chest radiograph in 18 (16%) of 110 previously healthy young men with chickenpox in one study and in 14% of adults in another series.¹⁷⁷⁻¹⁷⁹ Patients who are over 19 years of age account for 90% of cases of varicella pneumonia. The severity of varicella in adults, including the frequent occurrence of pneumonia, may result from the large inoculum received from infected children. Children who have malignancies, primary or acquired immunodeficiency, or have been treated with corticosteroids or

cytotoxic drugs have severe, widespread dissemination of the infection because cell-mediated immune mechanisms fail to restrict viral replication.

Although gestational chickenpox occurs in only 1 to 7 pregnancies per 10,000 pregnancies, the disease is often severe in infants who are infected in utero after their mothers develop chickenpox 5 days or less before delivery.^{180,181} These babies acquire the viral infection, but do not have passively transferred antibodies from their mothers. The rash, which develops on the fifth to tenth day of life, is followed by cutaneous purpura and pneumonia. The mortality is 30%. When the vesicular rash appears in the mothers more than 5 days before delivery and antibodies to varicella-zoster virus (VZV) are presumably transferred to the infants, the rash develops in the infants before the fourth day of life and there are very few deaths.

Pregnancy itself is also a predisposing factor for varicella pneumonia,¹⁸² and the mortality rate is 42%. A large proportion of immunocompromised patients also succumb to this infection. Even among immunocompetent patients with varicella pneumonia, however, the fatality rate is 10%.

After a mean incubation period of 14 days, a vesicular rash and mucosal lesions appear. Symptoms of pneumonia—cough, dyspnea, tachypnea, hemoptysis, and pleuritic chest pain—often begin abruptly 1–6 days later. The severity of pneumonia is usually out of proportion to the physical signs. Rhonchi and rales are detected in only 50%–60% of patients. Chest radiographs reveal a bilateral, nodular infiltrate that is often peribronchial and is more dense near the hilum. Cyanosis may occur, and death results from respiratory insufficiency.

It is unlikely that lung biopsy would be performed for varicella pneumonia because the diagnosis can usually be established on the epidemiologic basis of exposure to VZV and on the clinical appearance of the enanthem and the vesicular exanthem, which may appear in successive crops. When Tzanck preparations (scrapings of cells obtained from the base of a vesicle) are stained with H and E or by Giemsa or Papanicolaou methods, multinucleated giant cells are diagnostic of either VZV or HSV infection. The nuclei appear glassy, and inclusions may be visible, especially when H and E or PAP stain have been used. The Tzanck smear from skin lesions of chickenpox and shingles is more sensitive than culture, whereas the reverse is true for herpes simplex vesicles.^{183,184}

Virologic and microbiologic diagnostic methods have also been developed. A definitive diagnosis may be established by viral culture of vesicle fluid collected during the first 3 days of illness. Electron microscopy may demonstrate virions compatible with VZV and

HSV, and antigen detection methods including gel diffusion, countercurrent immunoelectrophoresis, and direct immunofluorescence have been developed. Varicella-zoster virus is difficult to culture. Detection of viral antigen is a more sensitive diagnostic method than inoculation of cell cultures.¹⁸⁵

A variety of serologic tests are available for documentation of VZV infection.¹⁸⁶ They are useful for determining the susceptibility of individuals who do not have a history of chickenpox in childhood. For the acute infection, they are all retrospective.

Cells that have been infected with VZV in vitro become refractile, then round, swell, and separate from one another before detaching from the surface of the flask. Multinucleate giant cells form. Eosinophilic intranuclear inclusions surrounded by a clear zone are observed if samples are exposed to a fixative that precipitates protein.³⁹ Ultrastructural examination of the nucleus reveals nucleocapsids with a dense central DNA core; the envelope is formed by budding through the nuclear membrane. Cytoplasmic virions are present in large membrane-bound vacuoles.

Cytopathology is similar in vivo. Cells swell and develop “balloon degeneration” necrosis with intranuclear inclusions. Giant cells with up to 30 nuclei often contain inclusion bodies.

The portal of entry of VZV is probably the upper respiratory tract, oropharynx, or conjunctiva, where initial replication precedes primary viremia. A second phase of viral replication then follows, possibly in the mononuclear phagocytic system, before a second viremia and clinical symptoms develop. Direct viral injury of capillary endothelium leads to thrombosis (Fig. 12–19), hemorrhage, and the spread of viral infection to cells in the adjacent tissue.

The pulmonary lesions of varicella pneumonia are multiple foci of hemorrhage and/or necrosis. They may be peribronchial, but more often appear as miliary parenchymal foci, suggesting hematogenous dissemination of virus (see Fig. 12–19). Interstitial pneumonia, including alveolar septal edema, mononuclear cell infiltration, and hyaline membranes may be present, especially adjacent to the necrotic foci. Bronchiolar exudates and even bronchial or pleural vesicles have been described. In the lungs, virally infected cells with intranuclear inclusions may be found in capillary endothelium, interstitial connective tissue, tracheobronchial mucosal epithelium, and alveolar epithelium. The intranuclear inclusions of varicella-zoster virus should be sought in viable cells at the edges of necrotic lesions. They are considerably more difficult to find than are the inclusions of herpes simplex infection. A case of neonatal VZV infection has been described as yet another form of giant cell pneumonia.¹⁸⁷

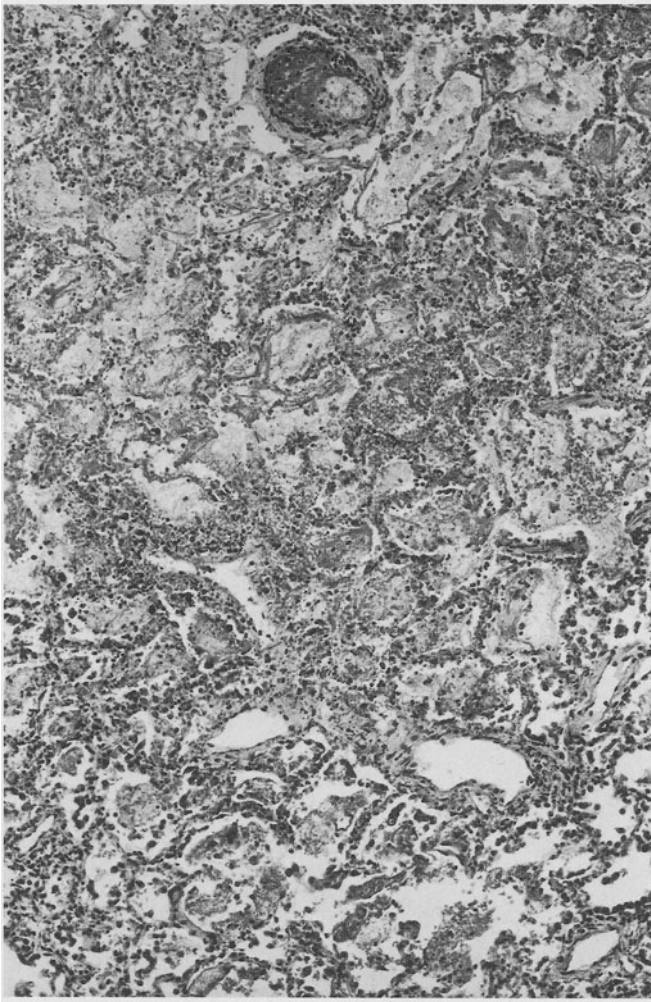


Fig. 12–19. Varicella-zoster pneumonitis. Edge of miliary, necrotic focus. At top, pulmonary arteriole contains fibrin thrombus; air spaces are necrotic. In center, alveoli contain red blood cells, abundant fibrin, and scattered inflammatory cells. At bottom, inflammation becomes less intense at edge of lesion, although no alveolus in this photomicrograph is normal. H and E, $\times 150$.

Complications and sequelae of varicella pneumonia include secondary bacterial pneumonia, pulmonary fibrosis, diffusion abnormalities, and diffuse nodular pulmonary calcifications.¹⁸⁸ Treatment with acyclovir appears to ameliorate the disease.¹⁸⁹

Because VZV is narrowly species specific and because simian varicella-like viruses produce infections quite different from human chickenpox, experimental elucidation of VZV pathogenesis has been difficult.

Cytomegalovirus

Human cytomegalovirus (CMV), probably the virus with the most spectacular cytopathology in the human lung, provides some of the thorniest of virologic prob-

lems in the immunocompromised host. The prevalence of infection by CMV is very high. It is difficult to establish CMV as the cause of pneumonia in the individual living patient because many CMV infections are asymptomatic. Isolation of the virus or even demonstration of viral inclusions in pulmonary cells does not establish unequivocally that CMV is responsible for clinical symptoms, because these same observations may also be made in asymptomatic infections.

Cytomegalovirus infection can be serious and even fatal. Unfortunately, there is as yet no effective antiviral chemotherapy. The severity of CMV infection depends upon the maturity and integrity of defense mechanisms, including the immune system of the host. There is increased risk of severe disease in congenitally and neonatally infected infants and in patients of all ages who are immunocompromised or are undergoing a primary infection. CMV may be transmitted transplacentally, by cervical secretions intrapartum, by aerosol droplets, by transfusion of blood or transplantation of kidney, bone marrow, liver, lung, or heart, and by contact with semen, cervical secretions, and breast milk.¹⁹⁰ Moreover, endogenous virus may be the source of recurrent infection, because CMV causes latent infections that may become reactivated. Reinfection with a second strain of CMV has also been observed.¹⁹¹

Congenital CMV infection occurs in 1% of infants, of whom only 5% are symptomatic.¹⁹² Severe disease is usually characterized by jaundice, hepatosplenomegaly, thrombocytopenia, purpura, growth retardation, and less frequently by microcephaly, periventricular cerebral calcifications, chorioretinitis, optic atrophy, psychomotor retardation, and sensorineural hearing loss. Congenital CMV infection is more often severe when it is associated with primary maternal infection.¹⁸¹

Fewer than 1% of patients who are congenitally infected with CMV have pneumonia, which is incidental to widespread dissemination of virus.¹⁹³ Neonatal CMV infection is acquired from maternal cervical secretions, blood transfusion, or breast milk; although neonatal infection is usually asymptomatic, protracted pneumonia may develop.^{194,195} The clinical signs—paroxysmal cough, tachypnea, intercostal retractions, rales, and bilateral pulmonary infiltrates with air-trapping—are indistinguishable from pneumonia caused by *Chlamydia trachomatis* or *Pneumocystis carinii*.¹⁹⁶ In fact, mixed infections of CMV and these agents occur often and are more severe than infections caused by CMV alone. Neonatal CMV pneumonia usually resolves, but virus may replicate to high titer (10^5 – 10^7 plaque-forming units/g) and fatal disease may result.^{197,198}

CMV infection is virtually universal early in life in developing countries. In the United States 50%–90% of adults have antibodies to this virus. Infection in older children and adults is usually asymptomatic, but it is

associated with an infectious mononucleosis syndrome without heterophil antibodies, particularly in patients older than 30 years of age who have received moderate-to-massive amounts of transfused blood.^{199,200} Fresh donor blood may contain CMV in leukocytes. The virus may be reactivated by allogeneic interaction with histoincompatible recipient cells. Pneumonia has been observed in 6% of patients with the CMV infectious mononucleosis syndrome.

Immunocompromised patients are at greater risk for CMV pneumonia, particularly those who have the acquired immunodeficiency syndrome (AIDS) or who have received transplanted allogeneic organs or bone marrow. Nearly one-third of renal transplant patients who are treated with prednisone, cytotoxic drugs, and/or antithymocyte serum develop fever 1–3 months after transplantation. An average of 15 days later respiratory symptoms develop in 42% of these patients; these are nonproductive cough, tachypnea, dyspnea, and hypoxemia. Radiographic infiltrates usually begin as bilateral, peripheral, and basilar shadows, then spread centrally and superiorly.^{201–204}

Fatalities supervene in 20% of renal transplant patients who have CMV infection, usually in those with diffuse pulmonary infiltrates and superinfection by bacteria, fungi, or *P. carinii*. Cell-mediated immunity, particularly cytotoxic T lymphocytes and natural killer cells, is an important host defense against CMV.²⁰⁴ CMV-infected patients who are treated with high-dosage, intravenous methylprednisolone often have reduced cytotoxic T-cell activity, prolonged viremia, and a fatal outcome despite the presence of antibody to CMV before transplantation. Risk factors for overt disease in transplant patients include male sex, diabetes mellitus, transplanted kidney from parent, cadaver, nonsibling, or non-HLA identical sibling, and a donor seropositive for CMV antibodies.

The major complication of allogeneic bone marrow transplantation is pneumonia, which develops in 41% of patients.²⁰⁵ The most frequently identified etiologic agent is CMV, which causes pneumonia in 16% of bone marrow recipients; the mortality rate in this population is 91%. Graft-versus-host disease, an important complication of bone marrow transplantation, is associated with an increased incidence of CMV pneumonia.

Patients with human immunodeficiency virus (HIV) infection who have AIDS are among the most immunosuppressed of patients. Almost all of these individuals develop CMV disease, often including pneumonia, at some time during their course.²⁰⁶

Lung biopsies in which CMV might be found come from immunocompromised patients with progressive pneumonia in whom the diagnosis has not been established by microbiologic and cytologic examination of respiratory specimens or by serology and in whom there

has been no response to empiric therapy directed against *P. carinii* and common bacterial pathogens.

Virologic and immunologic methods may establish a diagnosis of CMV infection; however, they are less effective in establishing the diagnosis of CMV pneumonia. CMV infection is diagnosed by isolation of virus from urine and, less frequently, from saliva, vaginal and cervical secretions, blood, milk, semen, tears, stool, respiratory secretions, and tissue. As has been mentioned above, however, viral excretion occurs in many asymptomatic subjects so that association of an isolated virus with a pathophysiologic process may be problematic. Isolation of CMV from blood leukocytes is less sensitive than from urine, but it indicates that there is active CMV disease.²⁰⁷

There are numerous pitfalls in the interpretation of CMV serologic data. The presence of antibodies to CMV indicates only past and possibly latent infection. Transplacental transfer of IgG assures that the majority of infants have antibodies to CMV at birth even if they are not infected. Immunosuppressed patients may not mount a detectable antibody response to CMV, even in fatal cases. Transfusion with seropositive blood can lead to the appearance of passive antibodies.

A variety of serologic assays have been developed. The complement fixation test, which is not useful in the 10% of sera that are anticomplementary, is relatively insensitive. The sensitive indirect fluorescent antibody assay and even more sensitive anticomplement immunofluorescence technique are cumbersome and require a fluorescence microscope. Passive hemagglutination, enzyme immunoassay, latex agglutination, and automated fluorescence (FIAX), which are sensitive, are suitable for screening purposes. Immune adherence hemagglutination has also been used.^{192,208–210}

The appearance of Fc receptors for IgG in infected cells that are employed as CMV antigens can cause problems in the indirect immunofluorescence test unless isolated nuclei are used. Assay of IgM by the indirect fluorescent antibody test is only 50% sensitive and yields false-positive results when rheumatoid factor is present. Griffiths and colleagues²¹¹ developed a radioimmunoassay that was able to distinguish accurately primary from secondary infections in pregnant women; false-positives were found in 19 of 104 (18%) of the women when the sera were tested by indirect immunofluorescence. However, radioimmunoassay is not well suited to routine laboratory use. Enzyme immunoassays for antibody to IgM have performed in a manner similar to radioimmunoassay.²¹² However, even the demonstration of IgM is not absolute assurance that the infection is primary.²¹³

The diagnosis of CMV pneumonia is usually made on clinical grounds, as when there is prolonged unexplained fever followed by radiographic pulmonary in-

filtrates in the proper clinical setting. If there is a fourfold or greater increase in antibody titer or if CMV is isolated from secretions, the likelihood of an active infection is increased.

When a lung biopsy is obtained, viral cultures are more sensitive than histologic examination of tissue.^{46,214–216} Likewise, cytologic diagnosis of CMV infection on bronchoalveolar lavage specimens is less sensitive than viral cultures. However, because viral cultures may be positive for CMV in the absence of pneumonia, cytopathologic diagnosis is, in fact, more specific. Two newer methods are immunofluorescent detection of CMV antigens and detection of CMV DNA by in situ hybridization, both of which appear comparable in sensitivity to viral culture.^{57,215,217–225} When utilized effectively, the timeliness of immunofluorescence (1.5–4 h) and DNA hybridization (1–2 days) will offer advantages over viral cultures. The virologists have also made progress in the diagnosis of this infection, however. Most isolates of CMV can be detected in less than 48 h when the inoculum is centrifuged onto a monolayer of susceptible fibroblasts, which are incubated for 16 h before testing by immunofluorescence for the presence of CMV antigen in the monolayer.²⁹

CMV-infected cells were described first in 1904 by Jesionek and Kiolemenoglou²²⁶ as large protozoan-like cells. In 1921 Goodpasture and Talbot²²⁷ reported a 2-month-old child with the same large cells, which they recognized as altered host cells. They described enlarged cells (10- to 30- μm diameter) that had large nuclei, large oval intranuclear inclusion bodies, and basophilic cytoplasmic inclusions. They suggested that these cells were spread hematogenously, and proposed the term cytomegalia for the cellular enlargement.

In 1932 Farber and Wolbach²²⁸ described cytomegalic intranuclear and cytoplasmic inclusions in the submaxillary salivary glands of 12% of 183 infants. They pointed out the similarity of the inclusions to those found in diseases caused by filterable viruses. Cole and Kuttner²²⁹ had already demonstrated that the cytomegalic lesions found in guinea pig salivary glands were caused by a filterable virus. Smith first successfully propagated a cytomegalovirus by serially transmitting murine CMV in mouse fibroblasts. Shortly thereafter, human CMV was isolated concurrently and independently in three laboratories.^{230–232}

CMV replicates in the nucleus, where assembly into typical herpesvirus nucleocapsids occurs, corresponding to the Feulgen-stained polymerized DNA in the intranuclear inclusion.²²⁸ The viral envelope is acquired by budding through the nuclear envelope (Fig. 12–20). Noninfectious enveloped particles contain the capsid assembly protein without viral DNA.²³³ In Giemsa-stained touch preparations of lung biopsies, the

cytomegalic cells measure up to 40 μm in diameter. Cellular enlargement may be related to virus-induced depolymerization of microtubules, secondary to the influx of calcium ions and breakdown of intermediate filaments.²³⁴

Viral inclusions are present both in the nucleus and in the cytoplasm. Intranuclear inclusions measure up to 20 μm in diameter and cytoplasmic inclusions are 1–3 μm in size.²⁰⁶ In sections that have been stained with hematoxylin and eosin, the early forms of the intranuclear inclusions resemble those of herpes simplex and varicella-zoster viruses. The mature inclusions are densely stained and vary from eosinophilic to deeply basophilic (Fig. 12–20). The inclusions are usually surrounded by an artefactual halo in formalin-fixed tissue. The marginated chromatin is uniformly compressed but not beaded. A prominent, single rounded clump of peripheral chromatin is often seen protruding into the otherwise clear halo zone. This probably represents a remnant nucleolus and is characteristic of CMV.³⁹ Cytoplasmic inclusions appear after the intranuclear inclusions are well developed; they are not found in all cells that have intranuclear inclusions. Ganciclovir, an inhibitor of CMV DNA synthesis, has been described to alter the appearance of the CMV intranuclear inclusions which become globular and eosinophilic because of the loss of viral DNA.²³⁵

The cytoplasmic inclusions, which are rounded, granular, and slightly basophilic, are stained by the periodic acid–Schiff and Gomori methenamine silver procedures, but the intranuclear inclusions are not.²³⁶ Whereas the Feulgen-positive intranuclear inclusions contain viral nucleoprotein and assembled capsids, the cytoplasmic inclusions appear to be of varied nature.²³⁷ Some are composed of cellular elements, such as accumulations of endoplasmic reticulum, vesicles, dense bodies, mitochondria, and lysosomes; some are composed almost entirely of virions;²³⁶ and others are a mixture of virions and cellular elements.

Hybridization with three cloned, biotinylated DNA segments that represented 56% of the CMV genomic DNA demonstrated that CMV-infected cells were not necessarily cytomegalic, nor did they always contain inclusions.²²⁰ In fact, morphologically normal cells including fibroblasts were also virally infected. By immunofluorescence, CMV antigens are present in cells of the alveolar lining and lumen and in the endothelium. Both intranuclear and cytoplasmic inclusions contain viral antigens.^{220,238}

Three different histopathological patterns have been described in the lungs of patients with CMV.^{17,211,220,239} Cytomegalic cells may be found in the alveolar epithelium with minimal evidence of inflammation and injury (Fig. 12–21). Alternatively, there

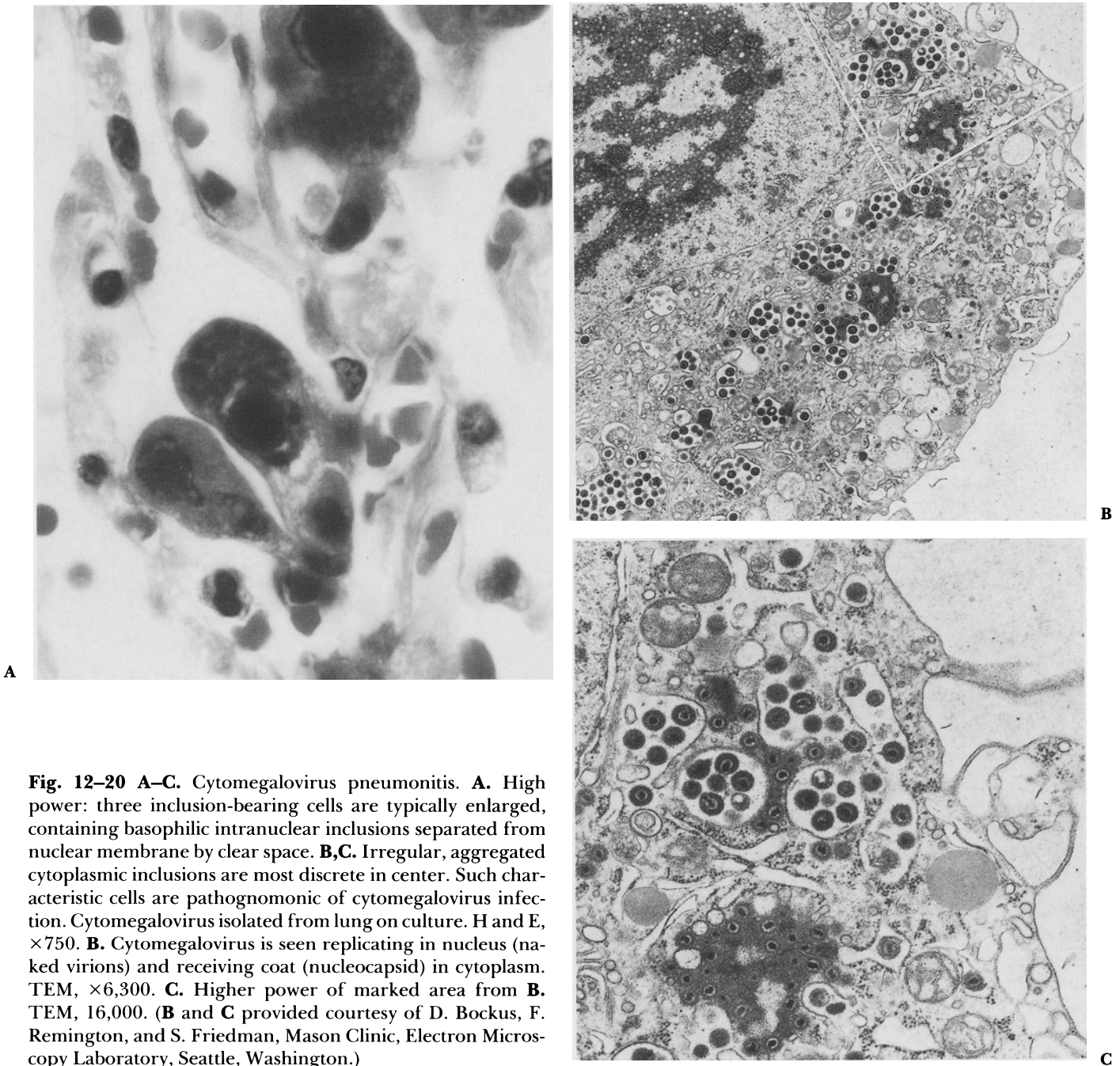


Fig. 12-20 A-C. Cytomegalovirus pneumonitis. **A.** High power: three inclusion-bearing cells are typically enlarged, containing basophilic intranuclear inclusions separated from nuclear membrane by clear space. **B,C.** Irregular, aggregated cytoplasmic inclusions are most discrete in center. Such characteristic cells are pathognomonic of cytomegalovirus infection. Cytomegalovirus isolated from lung on culture. H and E, $\times 750$. **B.** Cytomegalovirus is seen replicating in nucleus (naked virions) and receiving coat (nucleocapsid) in cytoplasm. TEM, $\times 6,300$. **C.** Higher power of marked area from **B.** TEM, 16,000. (**B** and **C** provided courtesy of D. Bockus, F. Remington, and S. Friedman, Mason Clinic, Electron Microscopy Laboratory, Seattle, Washington.)

may be miliary, multifocal lesions that contain cytomegalic inclusion cells. In these focal lesions the pulmonary architecture is obliterated by an exudative inflammatory response in the interstitium and in the air spaces. There may be central necrosis, hemorrhage, and an accumulation of fibrin, mononuclear cells, and neutrophils (Fig. 12-22). The third pattern is a diffuse interstitial pneumonia with lymphocytes, macrophages, and plasma cells. An exudative reaction is characterized by edema in the interstitium, serofibrinous exudates in

the alveolar spaces, and alveolar cell hyperplasia (Fig. 12-23). Hyaline membranes may be present, but are not frequent or widespread. Cytomegalic cells are scattered diffusely through the parenchyma of the lung. The miliary pattern is believed to represent hematogenous spread of virus infection to the lungs, after which slow centrifugal spread of this highly cell-associated virus produces focal lesions, just as occurs in cell monolayers.

CMV is a relatively nonvirulent virus, and infection

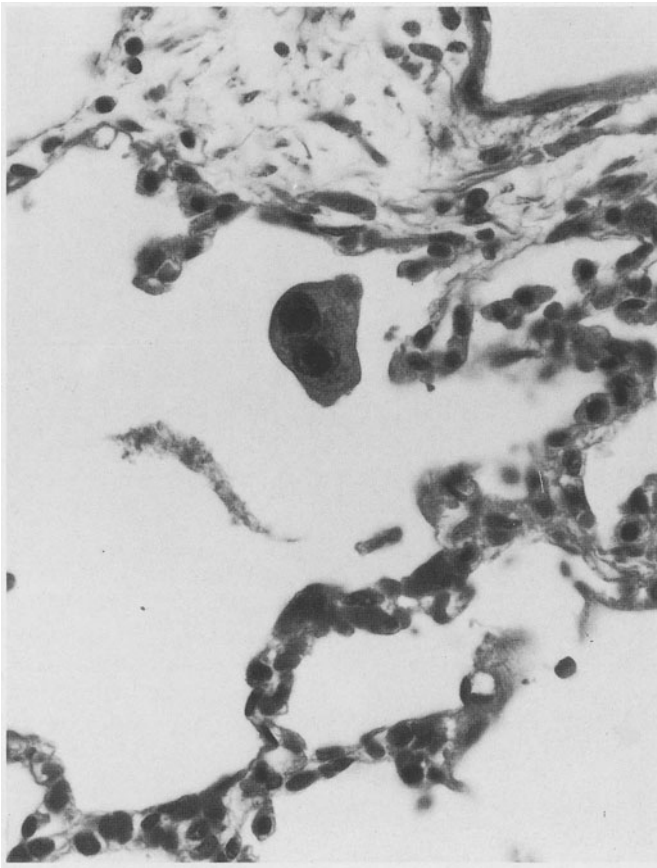


Fig. 12-21. Cytomegalovirus infection. Single inclusion-bearing cell present in air space is binucleate, an unusual finding in cytomegalovirus infection. Intranuclear inclusions present in both nuclei but cytoplasmic inclusions are absent. Minimal evidence of host reactivity: a wisp of proteinaceous material in air space and slight increase in prominence of respiratory epithelial cells. Cytomegalovirus isolated from lung. H and E, $\times 300$.

depends on defective defenses of the immunocompromised or immature host.²⁴⁰⁻²⁴² In vitro the virus has a relatively slow replicative cycle that produces slowly progressive lytic foci. Defective interfering particles are formed, and latent infection is established readily. In addition to direct virus-induced cytopathic effect, CMV-infected cells may be lysed by cytotoxic T lymphocytes and natural killer cells. Other possible immunopathologic mediators of tissue damage are circulating immune complexes, which are detectable in 45% of neonatal and congenital CMV cases. In some instances, deposits of IgG without CMV antigens have been observed in glomerular basement membrane.²⁴³ Animal models of CMV must be interpreted cautiously, because cytomegaloviruses, including human CMV, have a narrow host range. In fact, human CMV shares less than 5% of its DNA with murine CMV and simian CMV.

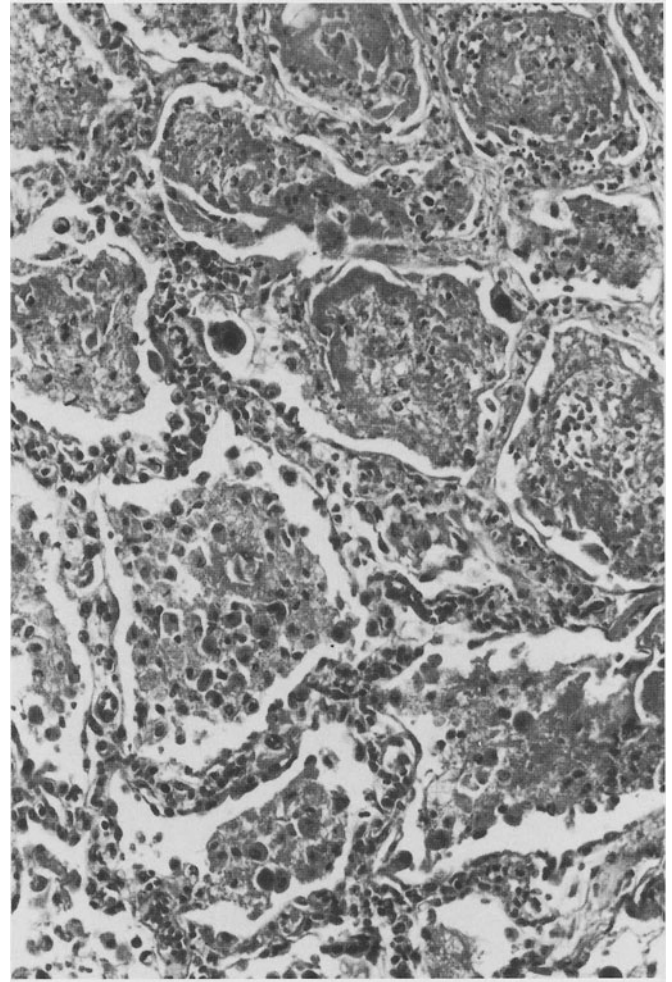


Fig. 12-22. Cytomegalovirus pneumonitis. Edge of nodular lesion depicted. Necrotic center of nodule, surrounded by damaged air spaces, is at top where alveoli are filled with coagulum of fibrin, inflammatory cells, and nuclear debris. Interstitium is edematous and contains sparse mononuclear exudate. Two large cells have dense intranuclear inclusions. Toward edge of nodule of inflammation (bottom), air spaces contain less dense collections of fibrin and mononuclear cells. Cytomegalovirus isolated from lung. H and E, $\times 150$.

Thus, human CMV is no more closely related to these agents than to the two serotypes of herpes simplex virus.

Primary CMV pneumonia may be fatal in its own right. In addition, this infection may be complicated by fatal bacterial, fungal, and protozoal infection. There is a close association of infection by CMV and the protozoan parasite *Pneumocystis carinii*. CMV pneumonia may resolve completely or may organize, leaving multifocal pulmonary scars.²⁴⁴ Treatment with ganciclovir, foscarnet, and intravenous human immunoglobulin ameliorates the course of illness in some patients whose

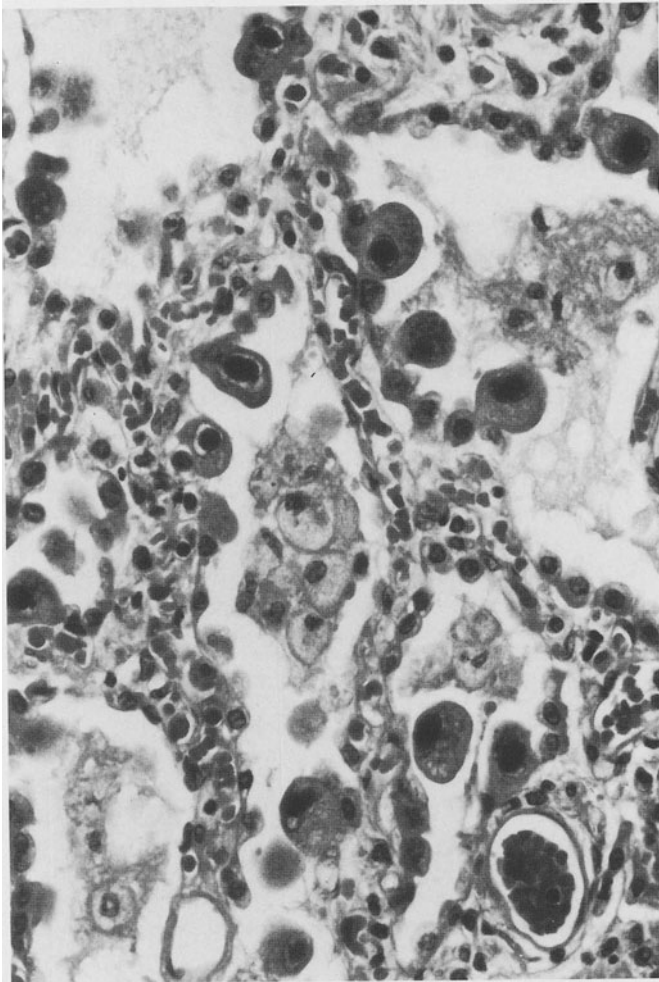


Fig. 12-23. Cytomegalovirus pneumonitis. Interstitium is edematous and contains sparse mononuclear cells. Alveolar epithelium is hyperplastic and air spaces contain macrophages and fibrin. Multiple enlarged cells contain both intranuclear and cytoplasmic inclusions. Cytomegalovirus isolated from lung. H and E, $\times 300$.

immunosuppression is transient. Severely immunocompromised patients often relapse and die despite a temporary antiviral effect.²⁴⁵

Other Viruses

Many other viruses replicate and cause disease in the upper respiratory tract. On rare occasions they may also infect the lower respiratory system, particularly in infants and children. The details of the pathologic changes are scant; for the most part the brief descriptions suggest nonspecific pulmonary damage or interstitial pneumonitis without any unique features. When the viruses produce latent infections, such as Epstein-Barr virus, or when they are frequently isolated from

respiratory secretions in the absence of disease, as are enteroviruses, it may be difficult even to document the association with absolute certainty. Such viruses include rhinovirus,²⁴⁶ an important etiologic agent of the common cold, Epstein-Barr virus,²⁴⁷ a major cause of infectious mononucleosis, and enteroviruses,²⁴⁸ which produce systemic disease, especially of the cardiac and central nervous systems.

References

1. Anderson LJ, Patriarca PA, Hierholzer JC, Noble GR. Viral respiratory illnesses. *Med Clin North Am* 1983; 67:1009-1030.
2. Brown RS, Nogrady MB, Spence L, Wiglesworth FW. An outbreak of adenovirus type 7 infection in children in Montreal. *Can Med Assoc J* 1973;108:434-439.
3. Becroft DMO. Histopathology of fatal adenovirus infection of the respiratory tract in young children. *J Clin Pathol* 1967;20:561-569.
4. Ferris JAJ, Aherne WA, Locke WS, McQuillin J, Gardner PS. Sudden and unexpected deaths in infants: Histology and virology. *Br Med J* 1973;2:439-442.
5. Hall WJ, Hall CB, Speers DM. Respiratory syncytial virus infection in adults. Clinical, virologic, and serial pulmonary function studies. *Ann Intern Med* 1978; 88:203-205.
6. Spelman DW, Stanley PA. Respiratory syncytial virus pneumonitis in adults. *Med J Aust* 1983;1:430-431.
7. Fry J. Influenza, 1959: The story of an epidemic. *Br Med J* 1959;2:135-138.
8. Case records of the Massachusetts General Hospital. Weekly clinicopathological exercises. Case 6-1979. *N Engl J Med* 1979;300:301-309.
9. Clinicopathologic Conference on adult respiratory distress syndrome. *Am J Med* 1971;50:521-529.
10. Martin CM, Kunin CM, Gottlieb LS, Barnes MW, Liu C, Finland M. Asian influenza A in Boston, 1957-1958. *Arch Intern Med* 1959;103:515-542.
11. Williams DM, Krick JA, Remington JS. State of the art: Pulmonary infection in the compromised host. Part II. *Am Rev Respir Dis* 1976;114:593-627.
12. Graham BS, Snell JD, Jr. Herpes simplex virus infection of the adult lower respiratory tract. *Medicine (Baltimore)* 1983;62:384-393.
13. Beckford AP, Kaschula ROC, Stephen C. Factors associated with fatal cases of measles. A retrospective autopsy study. *S Afr Med J* 1985;68:858-863.
14. Nash G. Necrotizing tracheobronchitis and bronchopneumonia consistent with herpetic infection. *Hum Pathol* 1972;3:283-291.
15. Winn WC Jr, Myerowitz RL. The pathology of the *Legionella* pneumonias. A review of 74 cases and the literature. *Hum Pathol* 1981;12:401-422.
16. Katzenstein AL, Askin FB. Surgical pathology of non-neoplastic lung disease. Philadelphia: WB Saunders, 1982.

17. Beschoner WE, Hutchins GM, Burns WH, Saral R, Tutschka PJ, Santos GW. Cytomegalovirus pneumonia in bone marrow transplant recipients: Miliary and diffuse patterns. *Am Rev Respir Dis* 1980;122:107-114.
18. Conte P, Heitzman ER, Markarian B. Viral pneumonia. Roentgen pathological correlations. *Radiology* 1970;95:267-272.
19. Balows A, Hausler WJ Jr, Herrmann KL, Isenberg HD, Shadomy HJ, eds. *Manual of clinical microbiology*, 5th Ed. Washington, DC: American Society for Microbiology, 1991.
20. Lennette EH, Schmidt NJ, eds. *Diagnostic procedures for viral, rickettsial and chlamydial infections*. 5th ed. Washington, DC. American Public Health Association, 1979.
21. Hsiung GD. *Diagnostic virology illustrated by light and electron microscopy*. 3d Ed. New Haven: Yale University Press, 1982.
22. Fields BN, Knipe DM, Chanock RM, Hirsch MS, Melnick JL, Monath TP, Roizman B, eds. *Virology*. 2nd Ed. New York: Raven, 1990.
23. Smith TF. Diagnostic virology in the community hospital. Extent and options. *Postgrad Med* 1984;75:215-223.
24. Hall CB, Douglas RG, Jr. Clinically useful method for the isolation of respiratory syncytial virus. *J Infect Dis* 1975;131:1-5.
25. Bromberg K, Daidone B, Clarke L, Sierra MF. Comparison of immediate and delayed inoculation of HEp-2 cells for isolation of respiratory syncytial virus. *J Clin Microbiol* 1984;20:123-124.
26. Treuhaft MW, Soukup JM, Sullivan BJ. Practical recommendations for the detection of pediatric respiratory syncytial virus infections. *J Clin Microbiol* 1985;22:270-273.
27. Ray CG, Minnich LL. Regional diagnostic virology services. Are satellite laboratories necessary? *JAMA* 1982;247:1309-1310.
28. McIntosh K. Diagnostic virology. In: Fields BN, Knipe DM, Chanock RM, Hirsch MS, Melnick JL, Monath TP, Roizman B, eds. *Virology*. 2nd Ed. New York: Raven, 1990:414.
29. Gleaves CA, Smith TF, Shuster EA, Pearson GR. Comparison of standard tube and shell vial cell culture techniques for the detection of cytomegalovirus in clinical specimens. *J Clin Microbiol* 1985;21:217-221.
30. Gleaves CA, Wilson DJ, Wold AD, Smith TF. Detection and serotyping of herpes simplex virus in MRC-5 cells by use of centrifugation and monoclonal antibodies 16 h postinoculation. *J Clin Microbiol* 1985;21:29-32.
31. Smith MC, Creutz C, Huang YT. Detection of respiratory syncytial virus in nasopharyngeal secretions by shell vial technique. *J Clin Microbiol* 1991;29:463-465.
32. Pothier P, Nicolas JC, de Saint Maur GP, Ghim S, Kazmierczak A, Bricout F. Monoclonal antibodies against respiratory syncytial virus and their use for rapid detection of virus in nasopharyngeal secretions. *J Clin Microbiol* 1985;21:286-287.
33. Lauer BA, Masters HA, Wren CG, Levin MJ. Rapid detection of respiratory syncytial virus in nasopharyngeal secretions by enzyme-linked immunosorbent assay. *J Clin Microbiol* 1985;22:782-785.
34. Grandien M, Pettersson CA, Gardner PS, Linde A, Stanton A. Rapid viral diagnosis of acute respiratory infections: comparison of enzyme-linked immunosorbent assay and the immunofluorescence technique for detection of viral antigens in nasopharyngeal secretions. *J Clin Microbiol* 1985;22:757-760.
35. Ahluwalia GS, Hammond GW. Comparison of cell culture and three enzyme-linked immunosorbent assays for the rapid diagnosis of respiratory syncytial virus from nasopharyngeal aspirate and tracheal secretion specimens. *Diagn Microbiol Infect Dis* 1988;9:187-192.
36. Smith DW, Frankel LR, Mathers LH, Tang ATS, Ariagno RL, Prober CG. A controlled trial of aerosolized ribavirin in infants receiving mechanical ventilation for severe respiratory syncytial virus infection. *N Engl J Med* 1991;325:24-29.
37. Blanding JG, Hoshiko MG, Stutman HR. Routine viral culture for pediatric respiratory specimens submitted for direct immunofluorescence testing. *J Clin Microbiol* 1989;27:1438-1440.
38. Tristram DA, Miller RW, McMillan JA, Weiner LB. Simultaneous infection with respiratory syncytial virus and other respiratory pathogens. *Am J Dis Child* 1988;142:834-836.
39. Strano AJ. Light microscopy of selected viral diseases (morphology of viral inclusion bodies). *Pathol Annu* 1976;11:53-75.
40. Naib ZM, Stewart JA, Dowdle WR, Casey HL, Marine WM, Nahmias AJ. Cytological features of viral respiratory tract infections. *Acta Cytol (Baltimore)* 1968;12:162-171.
41. Johnston WW, Frable WJ. The cytopathology of the respiratory tract. A review. *Am J Pathol* 1976;84:372-424.
42. Carson JL, Collier AM, Hu SS. Acquired ciliary defects in nasal epithelium of children with acute viral upper respiratory infections. *N Engl J Med* 1985;312:463-468.
43. Pierce CH, Knox AW. Ciliocytophthoria in sputum from patients with adenovirus infections. *Proc Soc Exp Biol Med* 1960;104:492-495.
44. Almeida JD. Uses and abuses of diagnostic electron microscopy. *Curr Top Microbiol Immunol* 1983;104:147-158.
45. Wang NS. Applications of electron microscopy to diagnostic pulmonary pathology. *Hum Pathol* 1983;14:888-900.
46. Gleaves CA, Smith TF, Wold AD, Wilson WR. Detection of viral and chlamydial antigens in open-lung biopsy specimens. *Am J Clin Pathol* 1985;83:371-374.
47. Pinkerton H, Carroll S. Fatal adenovirus pneumonia in infants. Correlation of histologic and electron microscopic observations. *Am J Pathol* 1971;65:543-548.
48. Yolken RH. Use of monoclonal antibodies for viral diagnosis. *Curr Top Microbiol Immunol* 1983;104:177-195.
49. Kao CL, McIntosh K, Fernie B, Talis A, Pierik L,

- Anderson L. Monoclonal antibodies for the rapid diagnosis of respiratory syncytial virus infection by immunofluorescence. *Diagn Microbiol Infect Dis* 1984;2:199–206.
50. Stout C, Murphy MD, Lawrence S, Julian S. Evaluation of a monoclonal antibody pool for rapid diagnosis of respiratory viral infections. *J Clin Microbiol* 1989;27:448–452.
51. Kim HW, Wyatt RG, Fernie BF, et al. Respiratory syncytial virus detection by immunofluorescence in nasal secretions with monoclonal antibodies against selected surface and internal proteins. *J Clin Microbiol* 1983;18:1399–1404.
52. Anestad G, Breivik N, Thoresen T. Rapid diagnosis of respiratory syncytial virus and influenza A virus infections by immunofluorescence: Experience with a simplified procedure for the preparation of cell smears from nasopharyngeal secretions. *Acta Pathol Microbiol Immunol Scand [B]* 1983;91:267–271.
53. Taber LH, Knight V, Gilbert BE, et al. Ribavirin aerosol treatment of bronchiolitis associated with respiratory syncytial virus in infants. *Pediatrics* 1983;72:613–618.
54. Hall CB, McBride JT, Walsh EE, et al. Aerosolized ribavirin treatment of infants with respiratory syncytial viral infection. A randomized double-blind study. *N Engl J Med* 1983;308:1443–1447.
55. Hirsch MS, Schooley RT. Treatment of herpesvirus infections. *N Engl J Med* 1983;309:963–970,1034–1039.
56. Edberg SC. Principles of nucleic acid hybridization and comparison with monoclonal antibody technology for the diagnosis of infectious diseases. *Yale J Biol Med* 1985;58:425–442.
57. Spector SA, Rua JA, Spector DH, McMillan R. Detection of human cytomegalovirus in clinical specimens by DNA-DNA hybridization. *J Infect Dis* 1984;150:121–126.
58. Virtanen M, Palva A, Laaksonen M, Halonen P, Soderlund H, Ranki M. Novel test for rapid viral diagnosis: detection of adenovirus in nasopharyngeal mucus aspirates by means of nucleic-acid sandwich hybridization. *Lancet* 1983;i:381–383.
59. Redfield DC, Richman DD, Albanil S, Oxman MN, Wahl GM. Detection of herpes simplex virus in clinical specimens by DNA hybridization. *Diagn Microbiol Infect Dis* 1983;1:117–128.
60. Chou S, Merigan TC. Rapid detection and quantitation of human cytomegalovirus in urine through DNA hybridization. *N Engl J Med* 1983;308:921–925.
61. Palva A, Ranki M. Microbial diagnosis by nucleic acid sandwich hybridization. *Clin Lab Med* 1985;5:475–490.
62. Jansen RW, Newbold JE, Lemon SM. Combined immunofluorescence-cDNA-RNA hybridization assay for detection of hepatitis A virus in clinical specimens. *J Clin Microbiol* 1985;22:984–989.
63. Myerson D, Hackman RC, Meyers JD. Diagnosis of cytomegaloviral pneumonia by in situ hybridization. *J Infect Dis* 1984;150:272–277.
64. Unger ER, Budgeon LR, Myerson D, Brigati DJ. Viral diagnosis by in situ hybridization. Description of a rapid simplified colorimetric method. *Am J Surg Pathol* 1986;10:1–8.
65. Hondo R, Kurata T, Sato S, Oda A, Aoyama Y. Enzymatic treatment of formalin-fixed and paraffin-embedded specimens for detection of antigens of herpes simplex, varicella-zoster and human cytomegaloviruses. *Jpn J Exp Med* 1982;52:17–25.
66. Chandler FW, Gorelkin L. Immunofluorescence staining of adenovirus in fixed tissues pretreated with trypsin. *J Clin Microbiol* 1983;17:371–373.
67. Murphy FA, Kingsbury DW. Virus taxonomy. In: Fields BN, Knipe DM, Chanock RM, Hirsch MS, Melnick JL, Monath TP, Roizman B, Eds. *Virology*. 2nd Ed. New York: Raven, 1990:9–35.
68. Murphy BR, Webster RG. Orthomyxoviruses. In: Fields BN, Knipe DM, Chanock RM, Hirsch MS, Melnick JL, Monath TP, Roizman B, Eds. *Virology*. 2nd Ed. New York: Raven, 1990:1091–1152.
69. Dowdle WR, Coleman MT, Gregg MB. Natural history of influenza type A in the United States, 1957–1972. *Prog Med Virol* 1974;17:91–135.
70. Shope RE. The infection of ferrets with swine influenza virus. *J Exp Med* 1934;60:49–61.
71. Raut S, Hurd J, Cureton RJ, Blandford G, Heath RB. The pathogenesis of infections of the mouse caused by virulent and avirulent variants of an influenza virus. *J Med Microbiol* 1975;8:127–136.
72. Rodgers B, Mims CA. Interaction of influenza virus with mouse macrophages. *Infect Immun* 1981;31:751–757.
73. Louria DB, Blumenfeld HL, Ellis JT, Kilbourne ED, Rogers DE. Studies on influenza in the pandemic of 1957–1958. II. Pulmonary complications of influenza. *J Clin Invest* 1959;38:213–265.
74. Hers JF, Masurel N, Mulder J. Bacteriology and histopathology of the respiratory tract and lungs in fatal Asian influenza. *Lancet* 1958;ii:1141–1143.
75. Hall CB, Douglas RG, Jr. Nosocomial influenza infection as a cause of intercurrent fevers in infants. *Pediatrics* 1975;55:673–677.
76. Camner P, Jarstrand C, Philipson K. Tracheobronchial clearance in patients with influenza. *Am Rev Respir Dis* 1973;108:131–135.
77. Abramson JS, Giebink GS, Quie PG. Influenza A virus-induced polymorphonuclear leukocyte dysfunction in the pathogenesis of experimental pneumococcal otitis media. *Infect Immun* 1982;36:289–296.
78. Jakab GJ. Immune impairment of alveolar macrophage phagocytosis during influenza virus pneumonia. *Am Rev Respir Dis* 1982;126:778–782.
79. Larson HE, Blades R. Impairment of human polymorphonuclear leukocyte function by influenza virus. *Lancet* 1976;i:283.
80. Soto PJ, Jr, Broun GO, Wyatt JP. Asian influenza pneumonia. A structural and virologic analysis. *Am J Med* 1959;27:18–25.
81. Oseasohn R, Adelson L, Kaji M. Clinicopathologic study of thirty-three fatal cases of Asian influenza. *N Engl J Med* 1959;260:509–518.

82. Feldman PS, Cohan MA, Hierholzer WJ, Jr. Fatal Hong Kong influenza: A clinical, microbiological and pathological analysis of nine cases. *Yale J Biol Med* 1972;45:49-63.
83. Hers JFP, Mulder J. Changes in the respiratory mucosa resulting from infection with influenza virus B. *J Pathol Bacteriol* 1957;73:565-568.
84. Winternitz MC, Watson IM, McNamara FP. The pathology of influenza. New Haven: Yale University Press 1920.
85. Walsh JJ, Dietlein LF, Low FN, Burch GE, Mogabgab WJ. Bronchotracheal response in human influenza: Type A, Asian strain, as studied by light and electron microscopic examination of bronchoscopic biopsies. *Arch Intern Med* 1961;108:376-388.
86. Noble RL, Lillington GA, Kempson RL. Fatal diffuse interstitial pneumonia: Premortem diagnosis by lung biopsy. *Chest* 1973;63:644-646.
87. Pinsker KL, Schneyer B, Becker N, Kamholz SL. Usual interstitial pneumonia following Texas A2 influenza infection. *Chest* 1981;80:123-126.
88. Joshi VV, Escobar MR, Stewart L, Bates RD. Fatal influenza A₂ viral pneumonia in a newborn infant. *Am J Dis Child* 1973;126:839-840.
89. Finckh ES, Bader L. Pulmonary damage from Hong Kong influenza. *Aust NZ J Med* 1974;4:16-22.
90. Engblom E, Ekfors TO, Meurman OH, Toivanen A, Nikoskelainen J. Fatal influenza A myocarditis with isolation of virus from the myocardium. *Acta Med Scand* 1983;213:75-78.
91. Tamura H, Aronson BE. Intranuclear fibrillary inclusions in influenza pneumonia. *Arch Pathol Lab Med* 1978;102:252-257.
92. Johanson WG, Jr, Pierce AK, Sanford JP. Pulmonary function in uncomplicated influenza. *Am Rev Respir Dis* 1969;100:141-146.
93. Picken JJ, Niewoehner DE, Chester EH. Prolonged effects of viral infections of the upper respiratory tract upon small airways. *Am J Med* 1972;52:738-746.
94. Laraya-Cuasay LR, DeForest A, Huff D, Lischner H, Huang NN. Chronic pulmonary complications of early influenza virus infection in children. *Am Rev Respir Dis* 1977;116:617-625.
95. Shalit I, McKee PA, Beauchamp H, Waner JL. Comparison of polyclonal antiserum versus monoclonal antibodies for the rapid diagnosis of influenza A virus infections by immunofluorescence in clinical specimens. *J Clin Microbiol* 1985;22:877-879.
96. McQuillin J, Madeley CR, Kendal AP. Monoclonal antibodies for the rapid diagnosis of influenza A and B virus infections by immunofluorescence. *Lancet* 1985;ii:911-914.
97. Horwitz MS. Adenoviral diseases. In: Fields BN, Knipe DM, Chanock RM, Hirsch MS, Melnick JL, Monath TP, Roizman B, eds. *Virology*. 2nd Ed. New York: Raven, 1990:1723-1740.
98. Ruuskanen O, Meurman O, Sarkkinen H. Adenoviral diseases in children: A study of 105 hospital cases. *Pediatrics* 1985;76:79-83.
99. Dudding BA, Wagner SC, Zeller JA, Gmelich JT, French GR, Top FH, Jr. Fatal pneumonia associated with adenovirus type 7 in three military trainees. *N Engl J Med* 1972;286:1289-1292.
100. Levin S, Dietrich J, Guillory J. Fatal nonbacterial pneumonia associated with adenovirus type 4. Occurrence in an adult. *JAMA* 1967;201:975-977.
101. Loker EF, Jr, Hodges GR, Kelly DJ. Fatal adenovirus pneumonia in a young adult associated with ADV-7 vaccine administered 15 days earlier. *Chest* 1974;66:197-199.
102. Schonland M, Strong ML, Wesley A. Fatal adenovirus pneumonia: Clinical and pathological features. *S Afr Med J* 1976;50:1748-1751.
103. Chany C, Lepine P, Lelong M, Le-Tan-Vinh, Satge P, Virat J. Severe and fatal pneumonia in infants and young children associated with adenovirus infections. *Am J Hyg* 1958;67:367-378.
104. Zahradnik JM, Spencer MJ, Porter DD. Adenovirus infection in the immunocompromised patient. *Am J Med* 1980;68:725-732.
105. Wasserman R, August CS, Plotkin SA. Viral infections in pediatric bone marrow transplant patients. *Pediatr Infect Dis J* 1988;7:109-115.
106. Field PR, Patwardhan J, McKenzie JA, Murphy AM. Fatal adenovirus type 7 pneumonia in an adult. *Med J Aust* 1978;2:445-447.
107. Shields AF, Hackman RC, Fife KH, Corey L, Meyers JD. Adenovirus infections in patients undergoing bone-marrow transplantation. *N Engl J Med* 1985;312:529-533.
108. Myerowitz RL, Stalder H, Oxman MN, et al. Fatal disseminated adenovirus infection in a renal transplant recipient. *Am J Med* 1975;59:591-598.
109. Craighead JE. Cytopathology of adenoviruses types 7 and 12 in human respiratory epithelium. *Lab Invest* 1970;22:553-557.
110. Wohl MEB, Chernick V. State of the art: Bronchiolitis. *Am Rev Respir Dis* 1978;118:759-781.
111. Becroft DM. Bronchiolitis obliterans, bronchiectasis, and other sequelae of adenovirus type 21 infection in young children. *J Clin Pathol* 1971;24:72-82.
112. Lang WR, Howden CW, Laws J, Burton JF. Bronchopneumonia with serious sequelae in children with evidence of adenovirus type 21 infection. *Br Med J* 1969;1:73-79.
113. Whitley RJ. Herpes simplex viruses. In: Fields BN, Knipe DM, Chanock RM, Hirsch MS, Melnick JL, Monath TP, Roizman B, eds. *Virology*. 2nd Ed. New York: Raven, 1990: 1843-1887.
114. Lindgren KM, Douglas RG, Jr, Couch RB. Significance of *Herpesvirus hominis* in respiratory secretions of man. *N Engl J Med* 1968;278:517-523.
115. Herout V, Vortel V, Vondrackova A. Herpes simplex involvement of the lower respiratory tract. *Am J Clin Pathol* 1966;46:411-419.
116. Francis DP, Herrmann KL, MacMahon JR, Chivigny KH, Sanderlin KC. Nosocomial and maternally acquired herpesvirus hominis infections. A report of four fatal

- cases in neonates. *Am J Dis Child* 1975;129:889–893.
117. Foley FD, Greenawald KA, Nash G, Pruitt BA, Jr. Herpesvirus infection in burned patients. *N Engl J Med* 1970;282:652–656.
 118. Nash G, Foley FD. Herpetic infection of the middle and lower respiratory tract. *Am J Clin Pathol* 1970;54:857–863.
 119. Ramsey PG, Fife KH, Hackman RC, Meyers JD, Corey L. Herpes simplex virus pneumonia: Clinical, virologic, and pathologic features in 20 patients. *Ann Intern Med* 1982;97:813–820.
 120. Douglas RG, Jr, Anderson S, Weg JG, et al. Herpes simplex virus pneumonia. Occurrence in an allotransplanted lung. *JAMA* 1969;210:902–904.
 121. Tuxen DV, Cade JF, McDonald MI, Buchanan MRC, Clark RJ, Pain MCF. Herpes simplex virus from the lower respiratory tract in adult respiratory distress syndrome. *Am Rev Respir Dis* 1982;126:416–419.
 122. Jordan SW, McLaren LC, Crosby JH. Herpetic tracheo-bronchitis. Cytologic and virologic detection. *Arch Intern Med* 1975;135:784–788.
 123. Cooney W, Dzuira B, Harper R, Nash G. The cytology of sputum from thermally injured patients. *Acta Cytol (Baltimore)* 1972;16:433–437.
 124. Markowitz LE, Preblud SR, Orenstein WA, et al. Patterns of transmission in measles outbreaks in the United States, 1985–1986. *N Engl J Med* 1989;320,2:75–81.
 125. Fulginiti VA, Eller JJ, Downie AW, Kempe CH. Altered reactivity to measles virus. *JAMA* 1967;202:1075–1080.
 126. Norrby E, Oxman MN: Measles virus. In: Fields BN, Knipe DM, Chanock RM, Hirsch MS, Melnick JL, Monath TP, Roizman B, eds. *Virology*. 2nd Ed. New York: Raven, 1990:1013–1044.
 127. Mitus A, Enders JF, Craig JM, Holloway A. Persistence of measles virus and depression of antibody formation in patients with giant-cell pneumonia after measles. *N Engl J Med* 1959;261:882–889.
 128. Haram K, Jacobsen K. Measles and its relationship to giant cell pneumonia (Hecht pneumonia). *Acta Pathol Microbiol Immunol Scand [A]* 1973;81:761–769.
 129. Kipps A, Kaschula ROC. Virus pneumonia following measles: A virological and histological study of autopsy material. *S Afr Med J* 1976;50:1083–1088.
 130. Denton J. The pathology of fatal measles. *Am J Med Sci* 1925;169:531–543.
 131. Goodpasture EW, Auerbach SH, Swanson HS, Cotter EF. Virus pneumonia of infants secondary to epidemic infections. *Am J Dis Child* 1939;57:997–1011.
 132. Sobonya RE, Hiller FC, Pingleton W, Watanabe I. Fatal measles (rubeola) pneumonia in adults. *Arch Pathol Lab Med* 1978;102:366–371.
 133. Archibald RWR, Weller RO, Meadow SR. Measles pneumonia and the nature of the inclusion-bearing giant cells: A light- and electron-microscope study. *J Pathol* 1971;103:27–34.
 134. Hecht V. Die Riesenzellen-Pneumonie im Kindesalter. *Beitr Pathol Anat* 1910;48:263–310.
 135. Pinkerton H, Smiley WL, Anderson WAD. Giant cell pneumonia with inclusions. A lesion common to Hecht's disease, distemper, and measles. *Am J Pathol* 1945; 21:1–15.
 136. Enders JF, McCarthy K, Mitus A, Cheatham WJ. Isolation of measles virus at autopsy in cases of giant-cell pneumonia without rash. *N Engl J Med* 1959;261:875–881.
 137. Annunziato D, Kaplan MH, Hall WW, et al. Atypical measles syndrome: Pathologic and serologic findings. *Pediatrics* 1982;70:203–209.
 138. Laptook A, Wind E, Nussbaum M, Shenker IR. Pulmonary lesions in atypical measles. *Pediatrics* 1978;62:42–46.
 139. Henderson JAM, Hammond DI. Delayed diagnosis in atypical measles syndrome. *Can Med Assoc J* 1985; 133:211–213.
 140. Hall CB, Geiman JM, Biggar R, Kotok DI, Hogan PM, Douglas RG, Jr. Respiratory syncytial virus infections within families. *N Engl J Med* 1976;294:414–419.
 141. Hall CB, Douglas G, Jr., Geiman JM, Messner MK. Nosocomial respiratory syncytial virus infections. *N Engl J Med* 1975;293:1343–1346.
 142. Englund JA, Sullivan CJ, Jordan MC, Dehner LP, Vercellotti GM, Balfour HH, Jr. Respiratory syncytial virus infection in immunocompromised adults. *Ann Intern Med* 1988;109:203–208.
 143. Guidry GG, Black-Payne CA, Payne DK, Jamison RM, George RB, Bocchini JA, Jr. Respiratory syncytial virus infection among intubated adults in a university medical intensive care unit. *Chest* 1991;100:1377–1384.
 144. Adams JM, Green RG, Evans CA, Beach N. Primary virus pneumonitis. A comparative study of two epidemics. *J Pediatr* 1942;20:405–420.
 145. Hubble D, Osborn GR. Acute bronchiolitis in children. *Br Med J* 1941;1:107–110.
 146. Adams JM, Imagawa DT, Zike K. Epidemic bronchiolitis and pneumonitis related to respiratory syncytial virus. *JAMA* 1961;176:1037–1039.
 147. Morales F, Calder MA, Inglis JM, Murdoch PS, Williamson J. A study of respiratory infections in the elderly to assess the role of respiratory syncytial virus. *J Infect* 1983;7:236–247.
 148. Berman S. Epidemiology of acute respiratory infections in children of developing countries. *Rev Infect Dis* 1991;13(Suppl. 6):S454–S462.
 149. Neilson KA, Yunis EJ. Demonstration of respiratory syncytial virus in an autopsy series. *Pediatr Pathol* 1990;10:491–502.
 150. Domurat F, Roberts NJ, Jr, Walsh EE, Dagan R. Respiratory syncytial virus infection of human mononuclear leukocytes in vitro and in vivo. *J Infect Dis* 1985; 152:895–902.
 151. Aherne W, Bird T, Court SDM, Gardner PS, McQuillin J. Pathological changes in virus infections of the lower respiratory tract in children. *J Clin Pathol* 1970;23:7–18.
 152. Holzel A, Parker L, Patterson WH, et al. Virus isolations from throats of children admitted to hospital with respiratory and other diseases, Manchester 1962–4. *Br Med J* 1965;1:614–619.
 153. Zinserling A. Peculiarities of lesions in viral and myco-

- plasma infections of the respiratory tract. *Virchows Arch [A]* 1972;356:259-273.
154. Gardner PS, McQuillin J, Court SDM. Speculation on pathogenesis in death from respiratory syncytial virus infection. *Br Med J* 1970;1:327-330.
 155. Hall CB, Douglas RG, Jr, Geiman JM. Respiratory syncytial virus infections in infants: quantitation and duration of shedding. *J Pediatr* 1976;89:11-15.
 156. McLean KH. The pathology of acute bronchiolitis—a study of its evolution. *Aust Ann Med* 1956;5:254-267.
 157. Welliver RC, Ogra PL. Use of immunofluorescence in the study of the pathogenesis of respiratory syncytial virus infection. *Ann NY Acad Sci* 1983;420:369-375.
 158. Welliver RC, Kaul TN, Ogra PL. The appearance of cell-bound IgE in respiratory-tract epithelium after respiratory-syncytial-virus infection. *N Engl J Med* 1980;303:1198-1201.
 159. Welliver RC, Kaul TN, Sun M, Ogra PL. Defective regulation of immune responses in respiratory syncytial virus infection. *J Immunol* 1984;133:1925-1930.
 160. Bui RHD, Molinaro GA, Kettering JD, Heiner DC, Imagawa DT, St. Geme, JW, Jr. Virus-specific IgE and IgG₄ antibodies in serum of children infected with respiratory syncytial virus. *J Pediatr* 1987;110:87-90.
 161. Ananaba GA, Anderson LJ. Antibody enhancement of respiratory syncytial virus stimulation of leukotriene production by a macrophagelike cell line. *J Virol* 1991;65:5052-5060.
 162. Rodriguez WJ, Kim HW, Brandt CD, et al. Aerosolized ribavirin in the treatment of patients with respiratory syncytial virus disease. *Pediatr Infect Dis J* 1987;6:159-163.
 163. Hemming VG, Rodriguez W, Kim HW, et al. Intravenous immunoglobulin treatment of respiratory syncytial virus infections in infants and young children. *Antimicrob Agents Chemother* 1987;31:1882-1886.
 164. Chanock RM, McIntosh K. Parainfluenza viruses. In: Fields BN, Knipe DM, Chanock RM, Hirsch MS, Melnick JL, Monath TP, Roizman B, eds. *Virology*. 2nd Ed. New York: Raven, 1990:963-988.
 165. Gardner PS, McQuillin J, McGuckin R, Ditchburn RK. Observations on clinical and immunofluorescent diagnosis of parainfluenza virus infections. *Br Med J* 1971;2:7-12.
 166. Chanock RM, Parrott RH, Johnson KM, Kapikian AZ, Bell JA. Myxoviruses: parainfluenza. *Am Rev Respir Dis* 1963;88:152-166.
 167. Parrott RH, Vargosko A, Luckey A, Kim HW, Cumming C, Chanock R. Clinical features of infection with hemadsorption viruses. *N Engl J Med* 1959;260:731-738.
 168. Welliver RC, Wong DT, Sun M, McCarthy N. Parainfluenza virus bronchiolitis: Epidemiology and pathogenesis. *Am J Dis Child* 1986;140:34-40.
 169. Waner JL, Whitehurst NJ, Downs T, Graves DG. Production of monoclonal antibodies against parainfluenza 3 virus and their use in diagnosis by immunofluorescence. *J Clin Microbiol* 1985;22:535-538.
 170. Delage G, Brochu P, Pelletier M, Jasmin G, Lapointe N. Giant-cell pneumonia caused by parainfluenza virus. *J Pediatr* 1979;94:426-429.
 171. Minnich L, Ray CG. Comparison of direct immunofluorescent staining of clinical specimens for respiratory virus antigens with conventional isolation techniques. *J Clin Microbiol* 1980;12:391-394.
 172. Little BW, Tihen WS, Dickerman JD, Craighead JE. Giant cell pneumonia associated with parainfluenza virus type 3 infection. *Hum Pathol* 1981;12:478-481.
 173. Jarvis WR, Middleton PJ, Gelfand EW. Parainfluenza pneumonia in severe combined immunodeficiency disease. *J Pediatr* 1979;94:423-425.
 174. Frank JA, Warren RW, Tucker JA, Zeller J, Wilfert CM. Disseminated parainfluenza infection in a child with severe combined immunodeficiency. *Am J Dis Child* 1983;137:1172-1174.
 175. Cowley JA, Barry RD. Characterization of human parainfluenza viruses. The structural proteins of parainfluenza virus 2 and their synthesis in infected cells. *J Gen Virol* 1983;64:2117-2125.
 176. Welliver RC, Wong DT, Middleton E, Sun M, McCarthy N, Ogra PL. Role of parainfluenza virus-specific IgE in pathogenesis of croup and wheezing subsequent to infection. *J Pediatr* 1982;101:889-896.
 177. Weber DM, Pellicchia JA. Varicella pneumonia: Study of prevalence in adult men. *JAMA* 1965;192:572-573.
 178. Gelb LD. Varicella-zoster virus. In: Fields BN, Knipe DM, Chanock RM, Hirsch MS, Melnick JL, Monath TP, Roizman B, eds. *Virology*. 2nd Ed. New York: Raven, 1990:2011-2054.
 179. Triebwasser JH, Harris RE, Bryant RE, Rhoades ER. Varicella pneumonia in adults. *Medicine (Baltimore)* 1967;46:409-423.
 180. Nisenbaum C, Wallis K, Herczeg E. Varicella pneumonia in children. *Helv Paediatr Acta* 1969;24:212-218.
 181. LaRussa P. Perinatal herpesvirus infections. *Pediatr Ann* 1984;13:659-670.
 182. Paryani SG, Arvin AM. Intra-uterine infection with varicella-zoster virus after maternal varicella. *N Engl J Med* 1986;314:1542-1546.
 183. Motyl MR, Bottone EJ, Janda JM. Diagnosis of herpesvirus infections: correlation of Tzanck preparation with viral isolation. *Diagn Microbiol Infect Dis* 1984;2:157-160.
 184. Solomon AR, Rasmussen JE, Weiss JS. A comparison of the Tzanck smear and viral isolation in varicella and herpes zoster. *Arch Dermatol* 1986;122:282-285.
 185. Drew WL, Mintz L. Rapid diagnosis of varicella-zoster virus infection by direct immunofluorescence. *Am J Clin Pathol* 1980;73:699-701.
 186. Herrmann KL. Viral serology. In: Lennette EH, Balows A, Hausler WJ, Jr., Shadomy HJ, eds. *Manual of clinical microbiology*. 4th ed. Washington, DC: American Society for Microbiology, 1985:921-923.
 187. Saito F, Yutani C, Imakita M, Ishibashi-Ueda H, Kanzaki T, Chiba Y. Giant cell pneumonia caused by varicella zoster virus in a neonate. *Arch Pathol Lab Med* 1989;113:201-203.
 188. Jones EL, Cameron AH. Pulmonary calcification in viral pneumonia. *J Clin Pathol* 1969;22:361-366.

189. Jura E, Chadwick EG, Josephs SH, et al. Varicella-zoster virus infections in children infected with human immunodeficiency virus. *Pediatr Infect Dis J* 1989;8:586–590.
190. Craighead JE. Cytomegalovirus pulmonary disease. *Pathobiol Annu* 1975;5:197–220.
191. Chou S. Acquisition of donor strains of cytomegalovirus by renal-transplant recipients. *N Engl J Med* 1986; 314:1418–1423.
192. Reynolds DW, Stagno S, Alford CA. Laboratory diagnosis of cytomegalovirus infections. In: Lennette EH, Schmidt NJ, eds. *Diagnostic procedures for viral rickettsial and chlamydial infections*. 5th Ed. Washington, DC: American Public Health Association 1979:399–439.
193. Stagno S, Pass RF, Dworsky ME, Britt WJ, Alford CA. Congenital and perinatal cytomegalovirus infections: clinical characteristics and pathogenic factors. *Birth Defects* 1984;20:65–85.
194. Stern H. Isolation of cytomegalovirus and clinical manifestations of infection at different ages. *Br Med J* 1968;1:665–669.
195. Ballard RA, Drew L, Hufnagle KG, Riedel PA. Acquired cytomegalovirus infection in preterm infants. *Am J Dis Child* 1979;133:482–485.
196. Stagno S, Brasfield DM, Brown MB, et al. Infant pneumonitis associated with cytomegalovirus, *Chlamydia*, *Pneumocystis*, and *Ureaplasma*: A prospective study. *Pediatrics* 1981;68:322–329.
197. Medearis DN. Observations concerning human cytomegalovirus infection and disease. *Bull Johns Hopkins Hosp* 1964;114:181–211.
198. Yeager AS, Grumet FC, Hafleigh EB, Arvin AM, Bradley JS, Prober CG. Prevention of transfusion-acquired cytomegalovirus infections in newborn infants. *J Pediatr* 1981;98:281–287.
199. Cohen JI, Corey GR. Cytomegalovirus infection in the normal host. *Medicine (Baltimore)* 1985;64:100–114.
200. Kirchner H. Immunobiology of infection with human cytomegalovirus. *Adv Cancer Res* 1983;40:31–105.
201. Peterson PK, Balfour HH, Marker SC, Fryd DS, Howard RJ, Simmons RL. Cytomegalovirus disease in renal allograft recipients: A prospective study of the clinical features, risk factors and impact on renal transplantation. *Medicine (Baltimore)* 1980;59:283–300.
202. Fiala M, Payne JE, Berne TV, et al. Epidemiology of cytomegalovirus infection after transplantation and immunosuppression. *J Infect Dis* 1975;132:421–433.
203. Rubin RH, Cosimi AB, Tolkoff-Rubin NE, Russell PS, Hirsch MS. Infectious disease syndromes attributable to cytomegalovirus and their significance among renal transplant recipients. *Transplantation* 1977;24:458–464.
204. Rook AH, Quinnan GV, Frederick WJR, et al. Importance of cytotoxic lymphocytes during cytomegalovirus infection in renal transplant recipients. *Am J Med* 1984;76:385–392.
205. Meyers JD, Flournoy N, Thomas ED. Nonbacterial pneumonia after allogeneic marrow transplantation: A review of ten years experience. *Rev Infect Dis* 1982; 4:1119–1132.
206. Blumenfeld W, Wagar E, Hadley WK. Use of the transbronchial biopsy for diagnosis of opportunistic pulmonary infections in acquired immunodeficiency syndrome (AIDS). *Am J Clin Pathol* 1984;81:1–5.
207. Lamberson HV, Jr. Cytomegalovirus (CMV): The agent, its pathogenesis, and its epidemiology. *Prog Clin Biol Res* 1985;182:149–173.
208. Griffiths PD. Diagnostic techniques for cytomegalovirus infection. *Clin Haematol* 1984;13:631–644.
209. Moore DG, Davis BG, Oefinger PE, Carlson JR. Reactivity of serologic tests for the detection of antibody specific to cytomegalovirus. *Am J Clin Pathol* 1985;83:622–625.
210. McHugh TM, Casavant CH, Wilber JC, Stites DP. Comparison of six methods for the detection of antibody to cytomegalovirus. *J Clin Microbiol* 1985;22:1014–1019.
211. Griffiths PD, Stagno S, Pass RF, Smith RJ, Alford CA Jr. Infection with cytomegalovirus during pregnancy: specific IgM antibodies as a marker of recent primary infection. *J Infect Dis* 1982;145:647–653.
212. Demmler GJ, Six HR, Hurst SM, Yow MD. Enzyme-linked immunosorbent assay for the detection of IgM-class antibodies to cytomegalovirus. *J Infect Dis* 1986; 153:1152–1155.
213. Drew WL. Controversies in viral diagnosis. *Rev Infect Dis* 1986;8:814–824.
214. Smith TF, Holley KE, Keys TF, Macasaet FF. Cytomegalovirus studies of autopsy tissue. *Am J Clin Pathol* 1975;63:854–858.
215. Hackman RC, Myerson D, Meyers JD, et al. Rapid diagnosis of cytomegalovirus pneumonia by tissue immunofluorescence with a murine monoclonal antibody. *J Infect Dis* 1985;151:325–329.
216. Abdallah PS, Mark JB, Merigan TC. Diagnosis of cytomegalovirus pneumonia in compromised hosts. *Am J Med* 1976;61:326–332.
217. Woods GL, Thompson AB, Rennard SL, Linder J. Detection of cytomegalovirus in bronchoalveolar lavage specimens. Spin amplification and staining with a monoclonal antibody to the early nuclear antigen for diagnosis of cytomegalovirus pneumonia. *Chest* 1990;98:568–575.
218. Weiss RL, Snow GW, Schumann GB, Hammond ME. Diagnosis of cytomegalovirus pneumonitis on bronchoalveolar lavage fluid: Comparison of cytology, immunofluorescence, and in situ hybridization with viral isolation. *Diagn Cytopathol* 1991;7:243–247.
219. Cordonnier C, Escudier E, Nicolas J-C, et al. Evaluation of three assays on alveolar lavage fluid in the diagnosis of cytomegalovirus pneumonitis after bone marrow transplantation. *J Infect Dis* 1987;155:495–500.
220. Myerson D, Hackman RC, Nelson JA, Ward DC, McDougall JK. Widespread presence of histologically occult cytomegalovirus. *Hum Pathol* 1984;15:430–439.
221. Schrier RD, Nelson JA, Oldstone MBA. Detection of human cytomegalovirus in peripheral blood lymphocytes in a natural infection. *Science* 1985;230:1048–1051.
222. Hilborne LH, Nieberg RK, Cheng L, Lewin KJ. Direct in situ hybridization for rapid detection of cytomegalovirus

- in bronchoalveolar lavage. *Am J Clin Pathol* 1987; 87:766-769.
223. Paradis IL, Grgurich WF, Dummer JS, Dekker A, Dauber JH. Rapid detection of cytomegalovirus pneumonia from lung lavage cells. *Am Rev Respir Dis* 1988;138:697-702.
 224. Churchill MA, Zaia JA, Forman SJ, Sheibani K, Azumi N, Blume KG. Quantitation of human cytomegalovirus DNA in lungs from bone marrow transplant recipients with interstitial pneumonia. *J Infect Dis* 1987;155:501-509.
 225. Gleaves CA, Meyers JD. Rapid detection of cytomegalovirus in bronchoalveolar lavage specimens from marrow transplant patients: Evaluation of a direct fluorescein-conjugated monoclonal antibody reagent. *J Virol Methods* 1989;26:345-350.
 226. Jesionek KA, Kiolemenoglou B. Über einen Befund von protozoenartigen Gebilden in den Organen eines hereditär-luetischen. Fötus *Munch Med Wochenschr* 1904;43:1905-1907.
 227. Goodpasture EW, Talbot FB. Concerning the nature of "protozoan-like" cells in certain lesions of infancy. *Am J Dis Child* 1921;21:415-425.
 228. Farber S, Wolbach SB. Intranuclear and cytoplasmic inclusions ("protozoan-like bodies") in the salivary glands and other organs of infants. *Am J Pathol* 1932; 8:123-135.
 229. Cole R, Kuttner AG. A filterable virus present in the submaxillary blands of guinea pigs. *J Exp Med* 1926; 44:855-873.
 230. Smith MG. Propagation in tissue cultures of a cytopathogenic virus from human salivary gland virus (SGV) disease. *Proc Soc Exp Biol Med* 1956;92:424-430.
 231. Rowe WP, Hartley JW, Waterman S, Turner HC, Huebner RJ. Cytopathogenic agent resembling human salivary gland virus recovered from tissue cultures of human adenoids. *Proc Soc Exp Biol Med* 1956;92: 418-424.
 232. Weller TH, Macauley LC, Craig JM, Wirth P. Isolation of intranuclear inclusion producing agents from infants with illnesses resembling cytomegalic inclusion disease. *Proc Soc Exp Biol Med* 1957;94:4-12.
 233. Irmiere A, Gibson W. Isolation of human cytomegalovirus intranuclear capsids, characterization of their protein constituents, and demonstration that the B-capsid assembly protein is also abundant in non-infectious enveloped particles. *J Virol* 1985;56:277-283.
 234. Plotkin SA, Michelson S, Alford CA, et al. The pathogenesis and prevention of human cytomegalovirus infection. *Pediatr Infect Dis* 1984;3:67-74.
 235. Hruban Z, Kuzo R, Heimann P, Weisenberg E, Hruban RH. Globular changes in cytomegaloviral inclusions after ganciclovir treatment. *Arch Virol* 1989;108:287-293.
 236. Gorelkin L, Chandler FW, Ewing EP, Jr. Staining qualities of cytomegalovirus inclusions in the lungs of patients with the acquired immunodeficiency syndrome: A potential source of diagnostic misinterpretation. *Hum Pathol* 1986;17:926-929.
 237. Kanich RE, Craighead JE. Human cytomegalovirus infection of cultured fibroblasts. I. Cytopathologic effects induced by an adapted and a wild strain. *Lab Invest* 1972;27:263-272.
 238. Iwasaki T, Satodate R, Masuda T, Kurata T, Hondo R. An immunofluorescent study of generalized infection of human cytomegalovirus in a patient with systemic lupus erythematosus. *Acta Pathol Jpn* 1984;34:869-874.
 239. Craighead JE. Pulmonary cytomegalovirus infection in the adult. *Am J Pathol* 1971;63:487-504.
 240. Hirsch MS, Felsenstein D. Cytomegalovirus-induced immunosuppression. *Ann NY Acad Sci* 1984;437:8-15.
 241. Gehrz RC, Rutzick SR. Cytomegalovirus (CMV)-specific lysis of CMV-infected target cells can be mediated by both NK-like and virus-specific cytotoxic T lymphocytes. *Clin Exp Immunol* 1985;61:80-89.
 242. Borysiewicz LK, Rodgers B, Morris S, Graham S, Sissons JGP. Lysis of human cytomegalovirus infected fibroblasts by natural killer cells: demonstration of an interferon-independent component requiring expression of early viral proteins and characterization of effector cells. *J Immunol* 1985;134:2695-2701.
 243. Ho M. Pathology of cytomegalovirus infection. In: Greenough WB III, Merigan TC, eds. *Cytomegalovirus: Biology and infection. Current topics in infectious disease*. New York: Plenum, 1982:119-129.
 244. Ravic C, Smith GW, Ahern MJ, McLoud T, Putman C, Milchgrub S. Cytomegaloviral infection presenting as a solitary pulmonary nodule. *Chest* 1977;71:220-222.
 245. Faulds D, Heel RE. Ganciclovir. A review of its antiviral activity, pharmacokinetic properties and therapeutic efficacy in cytomegalovirus infections. *Drugs* 1990;39: 597-638.
 246. Craighead JE, Meier M, Cooley MH. Pulmonary infection due to rhinovirus type 13. *N Engl J Med* 1969; 281:1403-1404.
 247. Mundy GR. Infectious mononucleosis with pulmonary parenchymal involvement. *Br Med J* 1972;1:219-220.
 248. Grist NR, Bell EJ, Assaad F. Enteroviruses in human disease. *Prog Med Virol* 1978;24:114-157.