

PRIMARY MURINE CORONAVIRUS INFECTION IN MICE

A Flow Cytometric Analysis

S. Kyuwa,¹ K. Machii,² A. Okumura,¹ and Y. Toyoda¹

¹ Department of Animal Pathology
Institute of Medical Science
University of Tokyo
Tokyo, Japan

² Department of Veterinary Public Health
Institute of Public Health
Tokyo, Japan

T cell-mediated immune responses play a pivotal role in both viral clearance and immunopathology in mice infected with murine coronavirus, strain JHM (JHMOV).^{1,2} In the present study, we attempted to characterize T cells induced during primary JHMOV infection by flow cytometric analysis.

Female, 6 to 8 week old C57BL/6 (B6) mice were infected intraperitoneally with 10^6 PFU of JHMOV. Although JHMOV replicated for the first 3 days but was eliminated from spleens of B6 mice at 7 days postinfection (pi). Flow cytometric analysis was carried out to characterize spleen cells from JHMOV-infected B6 mice.³ Most drastic changes were noted as an increased number of CD8⁺ T cells and their decreased CD8 intensity at 7 days pi. Time course study showed that intensity of $\alpha\beta$ T cell receptors declined with the CD8 intensity, while intensity of the lymphocyte function antigen-1 (LFA-1) and CD43 on CD8⁺ T cells increased. Two-color analysis demonstrated that CD8^{dull}LFA-1^{bright} T cells were induced transiently in both C57BL/6 and BALB/c mice following JHMOV infection (Figure 1). At 7 days pi a half of CD8⁺ T cells were partitioned into CD8^{dull}LFA-1^{bright} T cells. Forward and side scatter profiles of CD8^{dull}LFA-1^{bright} T cells indicated that the population appeared to be activated T cells. Although CD45RB^{dull}CD8⁺ and CD44^{bright}CD8⁺ T cells were observed in JHMOV-infected mice, expansion of CD25⁺CD8⁺ and CD11b⁺CD8⁺ T cells, which were reported as markers of cytotoxic T lymphocytes in choriomeningitis virus infection in mice^{4,5}, was not observed. Since the kinetics of the expansion of CD8^{dull}LFA-1^{bright} T cells was correlated with the viral elimination *in vivo*, we measured fresh cytotoxic activities of spleen cells from JHMOV-infected B6 mice against syngeneic JHMOV-infected macrophage-like cell line (IC-21 cells). The Ig⁻ splenocytes from mice 7 days pi but neither those from uninfected or 14 days pi showed a weak, but significant cytotoxic activity against JHMOV-infected H-2-matched cells *in vitro*. Therefore, these results suggest that the T cell population

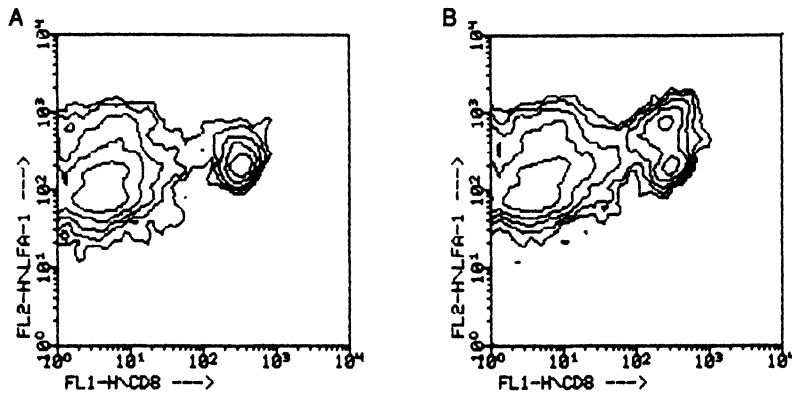


Figure 1. Two-color analysis of spleen cells from uninfected B6 mouse (A) and that at 7 days pi (B). Spleen cells were stained with anti-CD8 (FL1) and anti-LFA-1 (FL2) (antibodies, and analyzed by a FACScan™ flow cytometer.

may mediate the cytotoxicity against virus- infected cells *in vivo*, and thus the flow cytometric analysis is applicable to monitor coronavirus- induced primary cytotoxic T lymphocytes population *in vivo*.

REFERENCES

1. Kyuwa, S., Stohlman, S.A. Pathogenesis of a neurotropic murine oronavirus, strain JHM, in the central nervous system of mice. *Semin Virol* 1990;1:273-280.
2. Fleming, J.O., Wang, F.I., Trousdale, M.D., Hinton, D.R., Stohlman, S.A. Interaction of immune and central nervous system; contribution of anti-viral Thy-1⁺ cells to demyelination induced by coronavirus JHM. *Reg Immunol* 1993;5:37- 43.
3. Kyuwa, S., Machii, K., Okumura, A., Toyoda, Y. Induction of LFA-1^{high}CD8⁺ T cells associated with antiviral cytotoxicity during primary murine coronavirus infection in mice. Submitted.
4. Saron, M.F., Colle, J.H., Dautry- Varsat, A., Truffa- Bachi, P. Activated T lymphocytes from mice infected by lymphocytic choriomeningitis virus display high affinity IL-2 receptors but do not proliferate in response to IL-2. *J Immunol* 1991;147:4333-4337.
5. McFarland, H.I., Nahill, S.R., Maciaszek, J.W., Welsh, R.M. CD11b (Mac-1): a marker for CD8⁺ cytotoxic T cell activation and memory in virus infection. *J Immunol* 1992; 149:1326-1333.