

Erratum: Identification of Human Idiotype-Specific T Cells in Lymphoma and Myeloma

Jinsheng Weng, Sattva S. Neelapu, Alison F. Woo, and Larry W. Kwak

Erratum to: *Current Topics in Microbiology and Immunology*

DOI: 10.1007/82_2010_70

The original version of this article unfortunately contained two mistakes. Figures 1 and 2 were incorrect. The correct versions are given below:

Fig. 1 The term idiotype refers to the unique amino acid sequences within the highly variable regions of the surface immunoglobulin expressed on B cell malignancies. Idiotype includes both three complementarity-determining regions (CDR) and three framework region (FR) of immunoglobulin

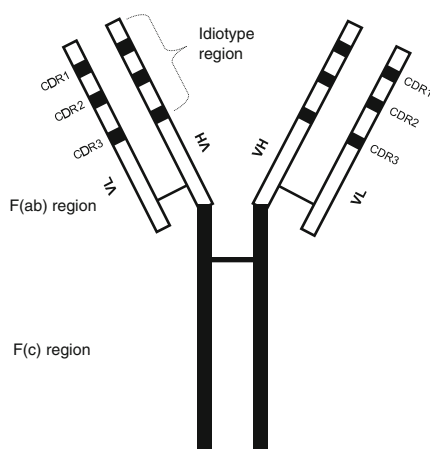
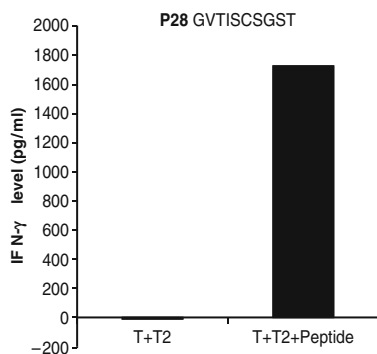


Fig. 2 IFN- γ ELISA. 1×10^5 idiotype light chain peptide-specific T cells secreted a large amount of IFN- γ when cocultured with 1×10^5 T2 cells loaded with $10 \mu\text{M}$ corresponding peptide (P28) compared with T2 cells loaded with $10 \mu\text{M}$ HIV peptide



The online version of the original chapter can be found under DOI: 10.1007/82_2010_70

J. Weng (✉), S.S. Neelapu, A.F. Woo, and L.W. Kwak
Department of Lymphoma and Myeloma, The University of Texas M. D. Anderson Cancer Center,
Houston, TX 77030, USA
e-mail: jweng@mdanderson.org